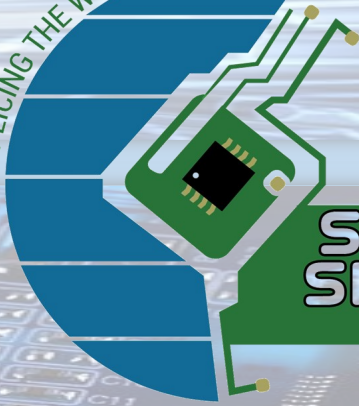
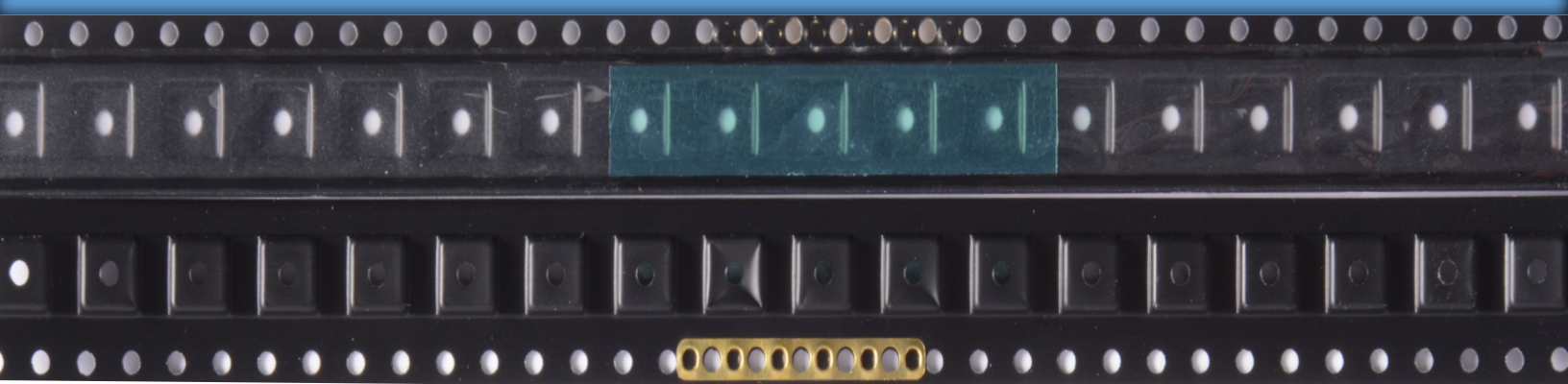
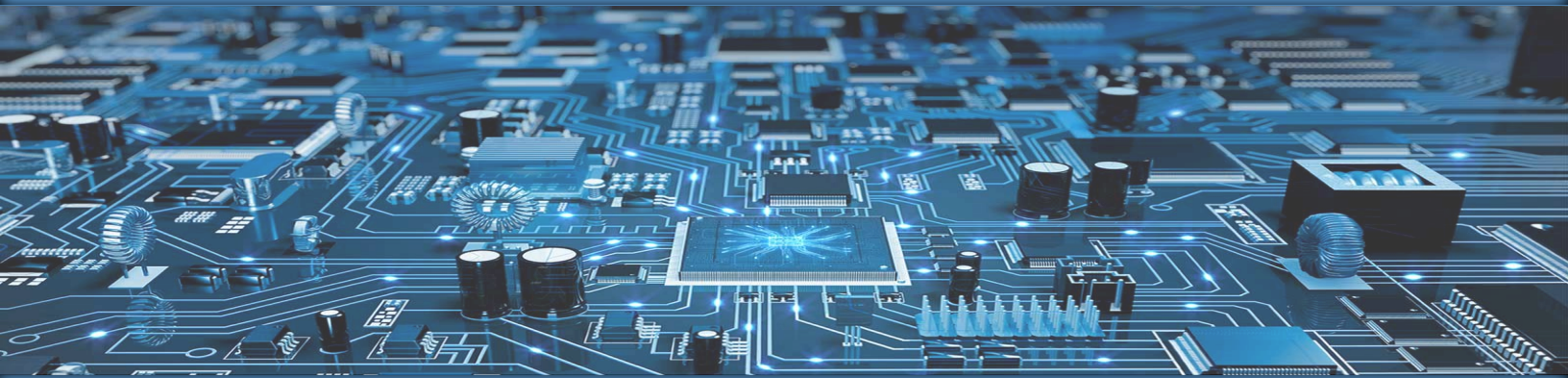
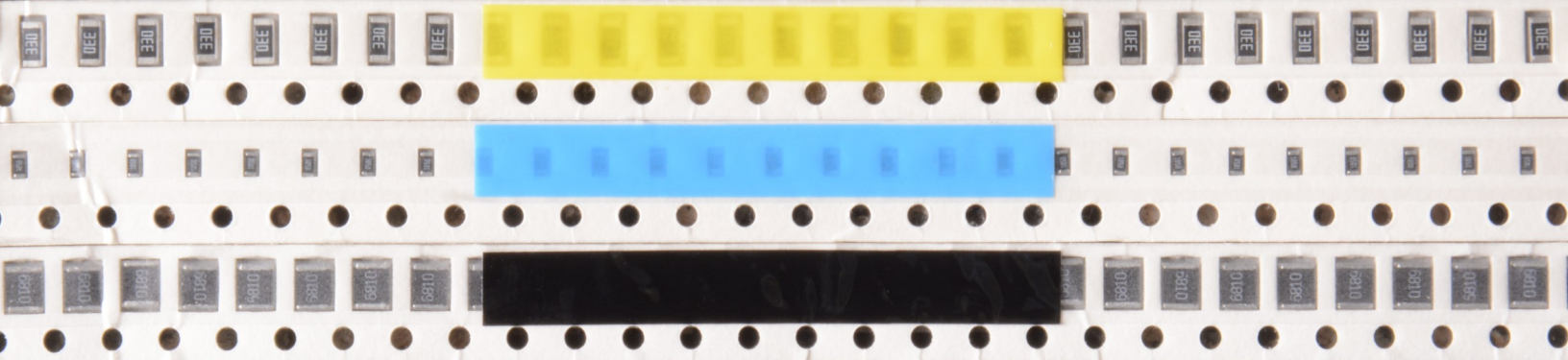


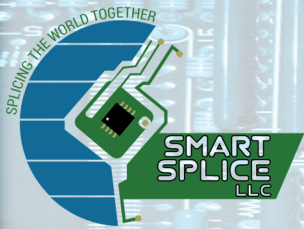
SPlicing THE WORLD TOGETHER



SMART
SPLICE
LLC

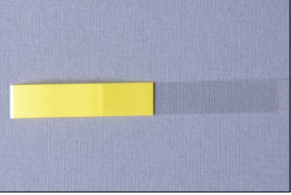
**The single
source
for ALL your
tape splicing
needs!**





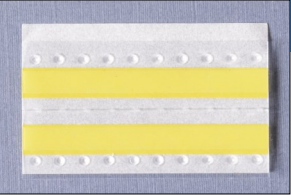
We at Smart Splice LLC are dedicated to one thing, and one thing only, supplying our customers with the highest quality tape splicing materials in the world! Through 45 years of experience and industry contacts, we have been able to find not only the highest quality materials, but at the lowest cost per splice use in the industry. This means no feeder jams and splice on-the-fly technology, for completely seamless board building and higher thru-puts on ANY pick and place machine.

SMT Cover Tape Extenders




Cover tape extenders can be used with either paper or plastic tape, punched or formed pockets, any cover tape, and come in a variety of widths, lengths, and thicknesses. We offer the extenders in either 16" or 20" lengths, and two thicknesses for ease of use on feeders with take up reels or pinch roller systems. There are also seven different widths available, 4mm, 8/12mm, 16mm, 24mm, 32/44mm, 56mm, and 72mm.

SMT Double Splice Tape



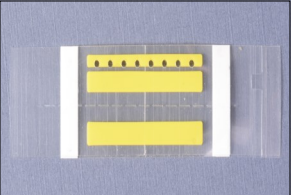
Double splice tape can be used with either paper or plastic tape, punched or formed pockets, any cover tape, and come in a variety of widths. It is primarily used for splicing on-the-fly (no tools needed) without removing a tape feeder from the pick and place machine. Although this type of splice was designed primarily for punched tape, most customers also use it for pocketed tape as well. It includes preformed dimples on the hard plastic cover for quick and easy alignment. They are available in 4mm, 8mm, 12mm, 16mm, and 24mm widths.

SMT Double Splice Tape w/Edge Alignment



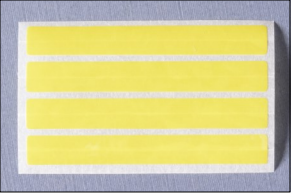
Double splice tape w/edge alignment can be used with either paper or plastic tape, punched or formed pockets, any cover tape, and come in a variety of widths. It is primarily used for splicing on-the-fly (no tools needed) without removing a tape feeder from the pick and place machine. This type of splice was designed primarily for punched tape but most customers use it for pocketed tape as well. It includes preformed dimples on the hard plastic cover as well as a hard plastic edge for quick and easy alignment. They are available in 4mm, 8mm, 12mm, 16mm, and 24mm widths.

SMT Double Splice Tape w/Holes

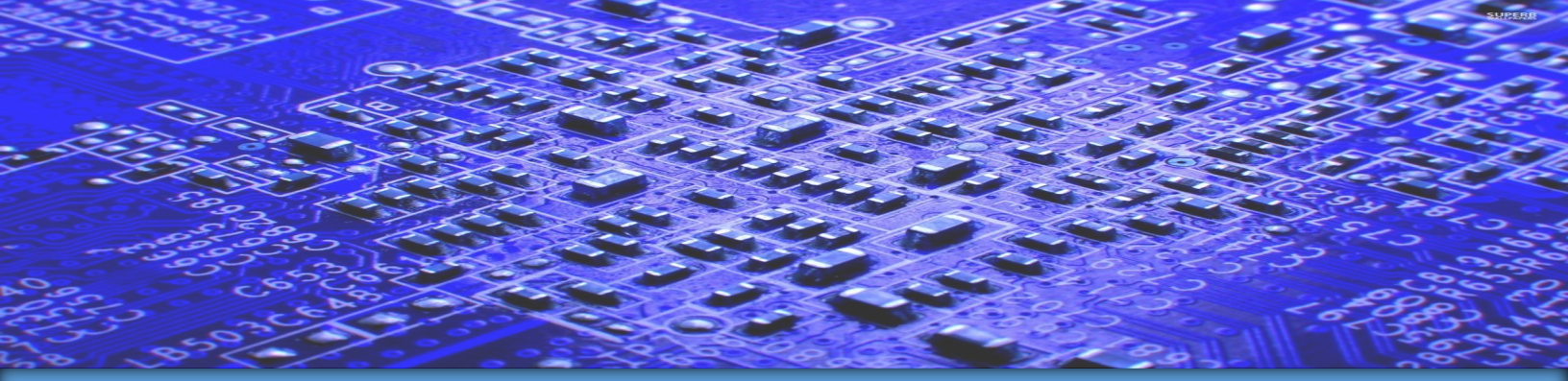


Double splice tape w/holes can be used with either paper or plastic tape, punched or formed pockets, any cover tape, and come in a variety of widths. It is primarily used for splicing on-the-fly (no tools needed) without removing a tape feeder from the pick and place machine. This type of splice was designed primarily for pocketed tape but is well suited for punched tape as well. It includes a top and bottom cover tape splice as well as an extra carrier tape splice over the sprocket holes. They are available in 8mm, 12mm, 16mm, 24mm, 32mm, and 44mm widths.

SMT Single Splice Tape

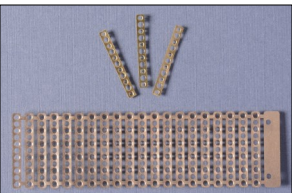


Single splice tape can be used with either paper or plastic tape, punched or formed pockets, any cover tape, and come in a variety of widths. They are primarily used in conjunction with either brass clips or brass clips on leadframe and their splicing tools respectively. They can be used on the top cover tape, bottom cover tape, or formed pocket bottoms. They can be purchased on cards or continuous rolls. They are available in 4mm, 8mm, 12mm, 16mm, 24mm, 32mm, 44mm, 56mm, and 72mm widths.



SMT Single Splice Tape w/Edge Alignment

Single splice tape w/edge alignment can be used with either paper or plastic tape, punched or formed pockets, any cover tape, and come in a variety of widths. They are primarily used in conjunction with either brass clips or brass clips on leadframe and their splicing tools respectively. They include a hard plastic edge on the plastic protection tape for quick and easy alignment. They can be used on the top cover tape, bottom cover tape, or formed pocket bottoms. They are available in 4mm, 8mm, 12mm, 16mm, 24mm, 32mm, 44mm, 56mm, and 72mm widths.



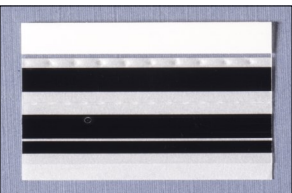
SMT Brass Splicing Clips

Brass splicing clips can be used with either paper or plastic tape, punched or formed pockets, any cover tape, and come in single or leadframe configurations. They can only be used with specific splicing tools designed for single clips or lead frames. These tools work with the tape facing away from them so the clips and tools can be used on any width of tape that include sprocket holes. The use of clips and tools makes splicing on-the-fly somewhat harder but still a mainstay with many customers and less operator dependent.



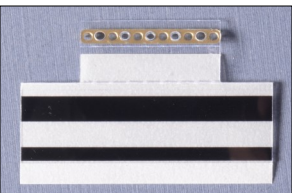
SMT Clip and Splice Tape

Clip and splice tape can be used with either paper or plastic tape, punched or formed pockets, any cover tape, and come in a variety of widths. They were developed to speed up the operation of clipping and splicing tape together. There is now no need to use a separate clip and then a piece of single splice tape. They come with a brass splice clip and single splice tape conveniently affixed to one plastic card. They are available in 8mm, 12mm, 16mm, and 24mm widths.



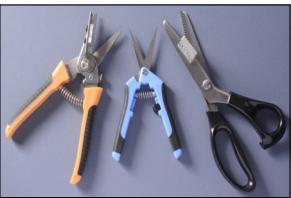
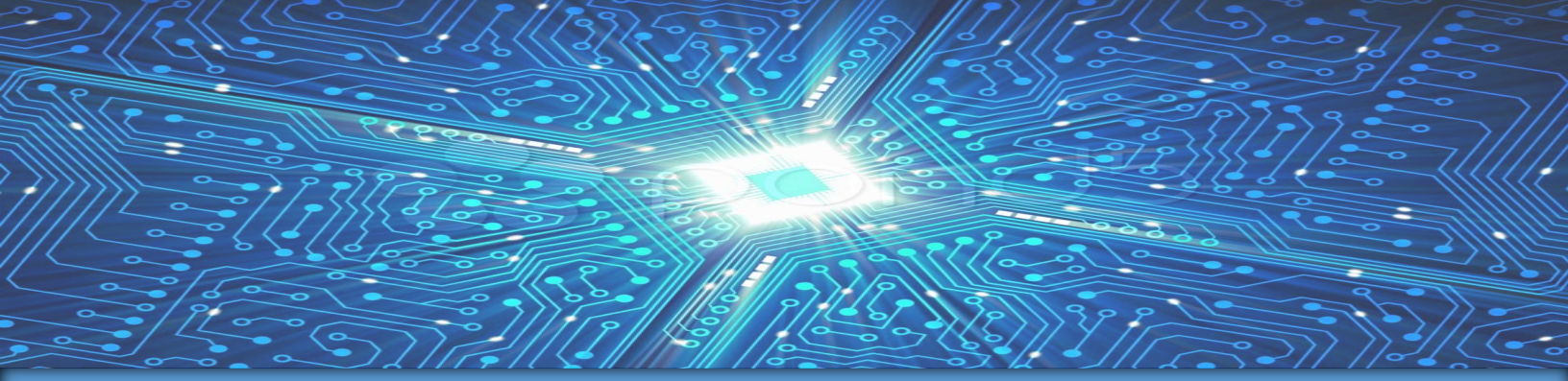
SMT Smart Feeder Double Splice Tape w/Edge Alignment

Double splice tape w/edge alignment for smart feeders can be used with either paper or plastic tape, punched or formed pockets, any cover tape, and come in a variety of widths. It is primarily used for splicing on-the-fly (no tools needed) without removing a tape feeder from the pick and place machine. There is an extra piece of black tape to cover the sprocket holes for smart feeder detection. It includes a hard plastic edge on the hard plastic cover for quick and easy alignment. They are available in 4mm, 8mm, 12mm, 16mm, and 24mm widths.



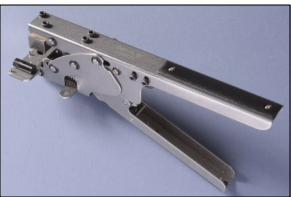
SMT Smart Feeder Clip and Splice Tape

Smart feeder clip and splice tape can be used with either paper or plastic tape, punched or formed pockets, any cover tape, and come in a variety of widths. They were developed to speed up the operation of clipping and splicing tape together. There is now no need to use a separate clip and then a piece of single splice tape. They come with a brass splice clip and single splice tape conveniently affixed to one plastic card. There is an extra piece of black tape to cover the sprocket holes for smart feeder detection. They are available in 8mm, 12mm, 16mm, and 24mm widths.



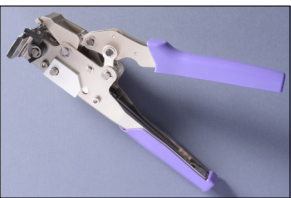
SMT Tape Cutting Tools

Our tape cutting tools can be used with either paper or plastic tape, punched or formed pockets, any cover tape, and cut all tape widths. The 8mm models have two sets of sprocket hole locating pins (for 2mm and 4mm pitch) that allow for the most accurate cutting and splicing of taped components. The zig zag cut model ensures not just accurate cutting but helps the cut tape interlock for speed of splicing on the assembly line. The cutting tool for 12mm and larger tapes also includes locating pins for accurate cutting of all larger width tapes.



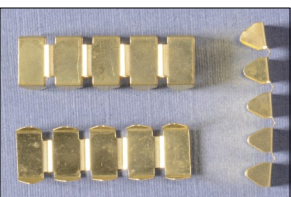
SMT Splice Tool for Clips and Clip and Splice Tape

Our splice tool for clips and clip and splice tape can be used with either paper or plastic tape, punched or formed pockets, any cover tape, and all tape widths. The clip and carrier tape are aligned and secured in the tool using sprocket hole locating pins and spring loaded clips. This tool is used for splicing any width of tape because the tape is secured facing away from the tool body. The consistency of the splice is not operator dependent because everything is locked in place by the tool. This model is used for a single clip or clip and splice tape only.



SMT Splice Tool for Clips on Leadframe

Our splice tool for clips on leadframe can be used with either paper or plastic tape, punched or formed pockets, any cover tape, and all tape widths. The clip and carrier tape are aligned and secured in the tool using sprocket hole locating pins and spring loaded clips. This tool uses clips on leadframe similar to a stapler and does 20 splices before needing reloaded. The consistency of the splice is not operator dependent because everything is locked in place by the tool. This model is used for clips on leadframe only.



Thru-Hole Axial Splice Clips

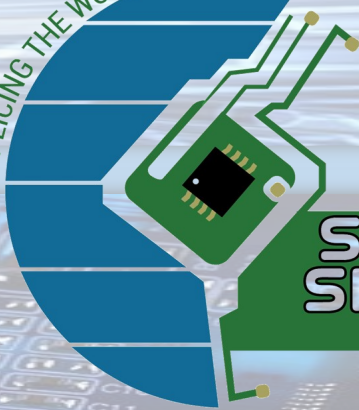
Axial splice clips can be used with either paper or cardboard tape. They are very useful for splicing where a tear occurred or when sequencing components is needed. These are high quality brass splice clips with a 5 up fold over design, to assure a consistent and secure splice. These splice clips might be for older style components, but still conform to our strict quality and cost control.



Thru-Hole Radial Splice Tapes

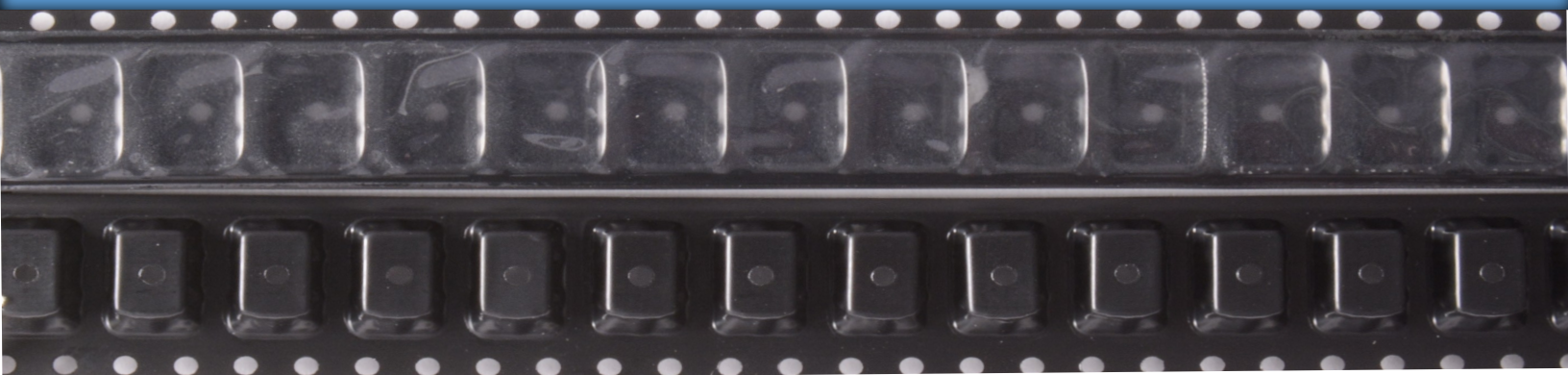
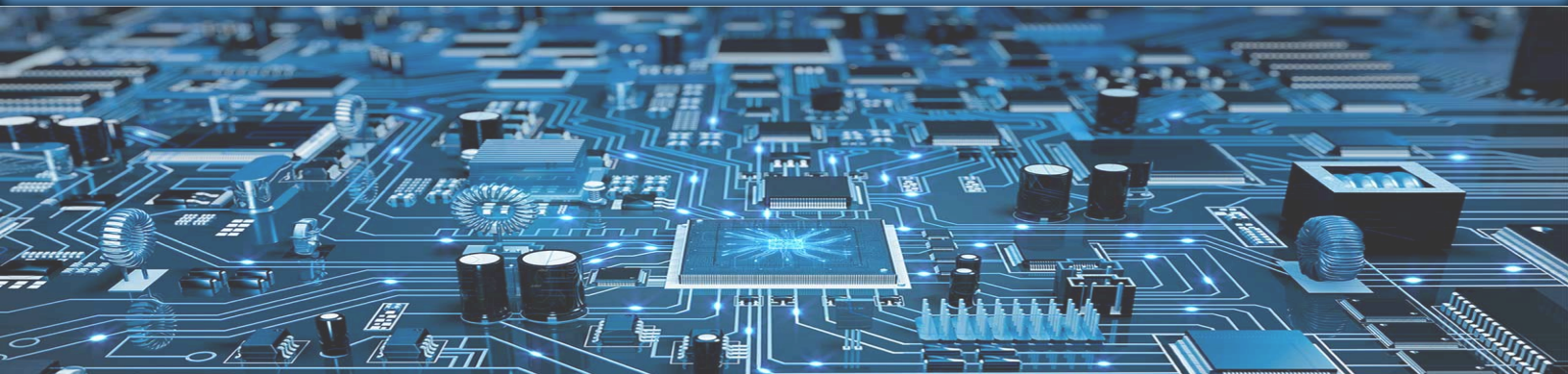
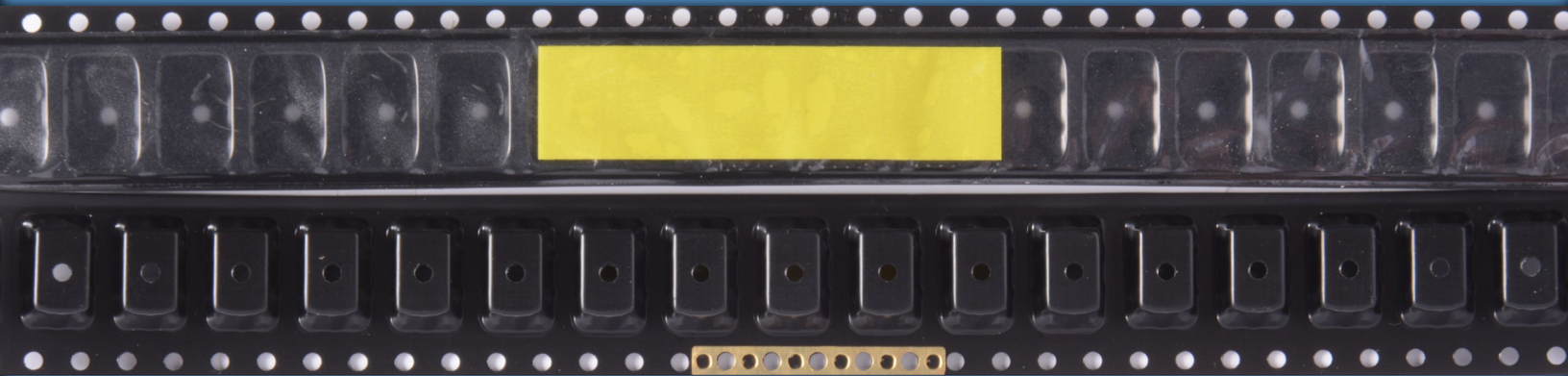
Radial splice tape can be used with either paper or cardboard tape. They are very useful for splicing where a tear occurred or when sequencing components is needed. These splices are available in various styles including a 2 hole fold over type (for front and back), a 3 hole single side type, and a 5 hole single side type. These splice tapes might be for older style components, but still conform to our strict quality and cost control.

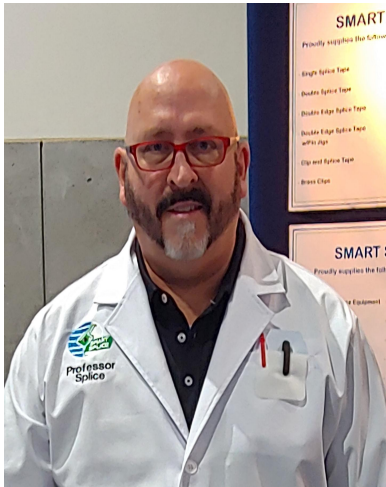
SPlicing THE WORLD TOGETHER



**SMART
SPLICE
LLC**

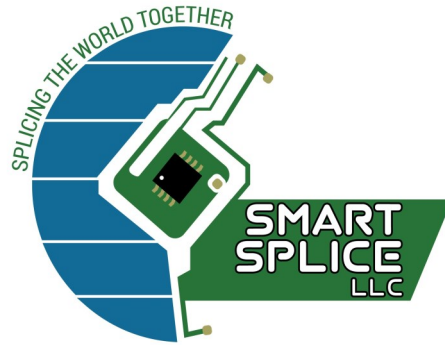
All SMT tape splicing materials in this brochure are available in the standard yellow, blue, black, red, pink, and new easy to see through light green.





Larry Welk

Co-Owner
Sales Manager



Curtis Berstler

Co-Owner
Business Manager

Sales Office:

Sales, Product Support,
Onsite Training, Samples

Smart Splice LLC
1746 Starbridge Dr.
Surfside Beach, SC 29575
Phone: 717-314-9297

Fax: 888-569-2975

lwelk@smartsplice.com

Business Office:

Orders, Accounts Payable,
Accounts Receivable

Smart Splice LLC
819 Washington Rd.
Westminster, MD 21157
Phone: 717-431-8653

Fax: 888-569-2975

cberstler@smartsplice.com



www.smartsplice.com

Proud Member of the:



SMTA
Surface Mount Technology Association