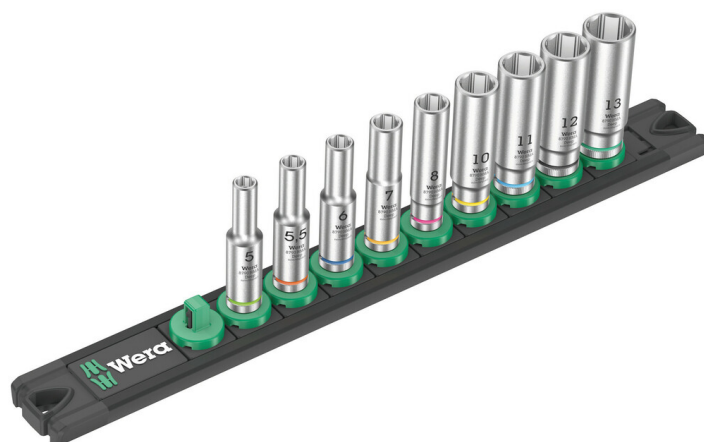


## Magnetic socket rail A Deep 1 socket set, 1/4" drive, 9 pieces

Zyklop Accessories, 1/4"



<b>EAN:</b>	4013288223210	<b>Size:</b>	275x75x35 mm
<b>Part number:</b>	05005410001	<b>Weight:</b>	526 g
<b>Article number:</b>	Socket Rail A Deep 1	<b>Country of origin:</b>	TW
		<b>Customs tariff number:</b>	82042000

- 9-piece socket set on socket rail, 1/4"
- Rail with secure bit mounting and yet easy removal (twist-to-unlock) for temporary attachment on wall, shelf or workshop trolley
- Smooth Twist to Unlock mechanism for a secure fit and simple removal of the sockets
- Long 1/4" socket for low-profile-fitting screw connections in tight construction spaces and for protruding threaded rods
- Hexagonal profile enables precise and profile-preserving screwdriving with high power transmission
- For manual and power tool operations (non-impact)
- Equipped with ball stop groove, knurling at lower end for better gripping

Socket rail with 9 long manual and machine sockets (non-impact), 1/4". A smooth rotary mechanism allows a secure hold and easy access of the sockets. Long 1/4" manual and machine sockets (ISO 2725 part 3) by Wera for manual and (non-impact) machine use even at low lying couplings and protruding thread rods. With Take it easy tool finder with colour coding by size - to help you find the required tool quickly and easily. Slip-proof for easy grip even with oily hands. With hexagon profile and ball stop groove. The hexagon profile enables the transmission of high forces and loads the edges of the bolt or the screw head less than a double hexagon profile. Fine-teethed ratchets also make use of a double hexagon profile superfluous, even in confined spaces, thanks to their small return angle. For external hexagon bolts and screws. The rail allows temporary attachment to metallic surfaces and, with its twist-to-unlock function, ensures secure locking and unlocking of the sockets.

### Web link

[https://products.wera.de/en/zyklop\\_ratchets\\_and\\_accessories\\_the\\_zyklop\\_ratchets\\_the\\_zyklop\\_ratchets\\_1\\_4\\_zyklop\\_accessories\\_1\\_4\\_socket\\_rail\\_a\\_deep\\_1.html](https://products.wera.de/en/zyklop_ratchets_and_accessories_the_zyklop_ratchets_the_zyklop_ratchets_1_4_zyklop_accessories_1_4_socket_rail_a_deep_1.html)

Wera - Socket Rail A Deep 1  
05005410001 - 4013288223210

Wera Werkzeuge GmbH  
Korzter Straße 21-25  
D-42349 Wuppertal  
Tel: +49 (0)2 02 / 40 45-0  
E-Mail: [info@wera.de](mailto:info@wera.de)

## Magnetic socket rail A Deep 1 socket set, 1/4" drive, 9 pieces

### Zyklop Accessories, 1/4"



#### Set contents:



#### 8790 HMA Deep

05004501001	1 x 5 x 50 mm
05004502001	1 x 5.5 x 50 mm
05004503001	1 x 6 x 50 mm
05004504001	1 x 7 x 50 mm
05004505001	1 x 8 x 50 mm
05004507001	1 x 10 x 50 mm
05004508001	1 x 11 x 50 mm
05004509001	1 x 12 x 50 mm
05004510001	1 x 13 x 50 mm



#### 9600

05136420001	1 x 30 x 270 mm
-------------	-----------------

#### Manual and machine sockets



Wera Belts



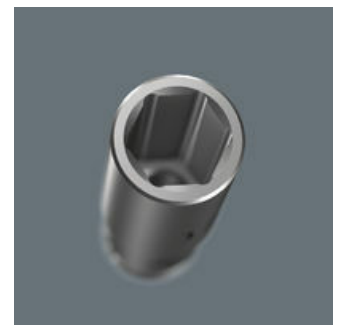
The manual and machine sockets can be used both for hand and power tools use (non-impact). Users need just one socket set for all applications.

#### Long design



Due to the long design of the socket, screwdriving can also be achieved in small spaces. Fittings with protruding threaded rods are often also possible.

#### Profile-friendly power transmission



The hexagon profile allows the transmission of high forces and puts less strain on the edges of bolts or screw heads than a double hexagon profile. Fine-toothed ratchets also make the use of a double hexagon profile superfluous, even in confined spaces, thanks to their small return angle.

#### Web link

[https://products.wera.de/en/zyklop\\_ratchets\\_and\\_accessories\\_the\\_zyklop\\_ratchets\\_the\\_zyklop\\_ratchets\\_1\\_4\\_zyklop\\_accessories\\_1\\_4\\_socket\\_rail\\_a\\_deep\\_1.html](https://products.wera.de/en/zyklop_ratchets_and_accessories_the_zyklop_ratchets_the_zyklop_ratchets_1_4_zyklop_accessories_1_4_socket_rail_a_deep_1.html)

Wera - Socket Rail A Deep 1  
05005410001 - 4013288223210

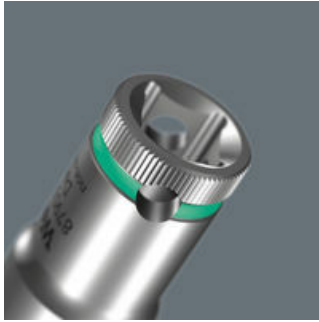
Wera Werkzeuge GmbH  
Korzerter Straße 21-25  
D-42349 Wuppertal  
Tel: +49 (0)2 02 / 40 45-0  
E-Mail: [info@wera.de](mailto:info@wera.de)

## Magnetic socket rail A Deep 1 socket set, 1/4" drive, 9 pieces

### Zyklop Accessories, 1/4"



#### Knurling



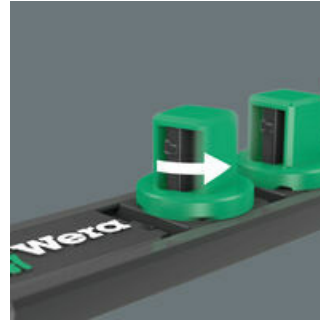
Knurling on lower end for more grip when used manually.

#### Take it easy tool finder system



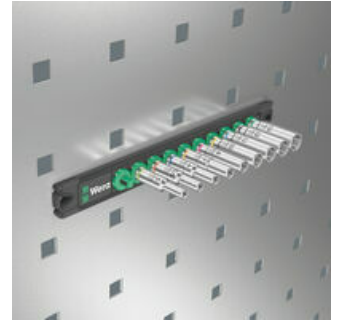
Take it easy tool finder system - with profile and size colour-coding for quick and easy tool selection. Colour-coded system for hexagon drive screws (L-Keys, Zyklop bit sockets), external hex drive screws and nuts (Joker wrenches, Zyklop sockets and Zyklop bit sockets with holding function), and TORX® drive screws (L-Keys, Zyklop bit sockets).

#### Twist-to-unlock mechanism



With its twist-to-unlock mechanism the socket rail ensures easy access of the sockets. At the same time the sockets are held securely.

#### Magnetic



Thanks to the magnet, the rail is suitable for temporary attachment to the wall, shelf or workshop trolley.

#### Web link

[https://products.wera.de/en/zyklop\\_ratchets\\_and\\_accessories\\_the\\_zyklop\\_ratchets\\_the\\_zyklop\\_ratchets\\_1\\_4\\_zyklop\\_accessories\\_1\\_4\\_socket\\_rail\\_a\\_deep\\_1.html](https://products.wera.de/en/zyklop_ratchets_and_accessories_the_zyklop_ratchets_the_zyklop_ratchets_1_4_zyklop_accessories_1_4_socket_rail_a_deep_1.html)

Wera - Socket Rail A Deep 1  
05005410001 - 4013288223210

Wera Werkzeuge GmbH  
Korzerter Straße 21-25  
D-42349 Wuppertal  
Tel: +49 (0)2 02 / 40 45-0  
E-Mail: [info@wera.de](mailto:info@wera.de)