

334/368/6 Screwdriver set and rack, 6 pieces

Kraftform Plus – Series 300



EAN:	4013288122735	Size:	285x210x55 mm
Part number:	05347778001	Weight:	738 g
Article number:	334/368/6	Country of origin:	CZ
		Customs tariff number:	82054000

- Screwdrivers for square, slotted and cross-recess (Phillips) screws
- Multi-component Kraftform handle for fast and ergonomic screwdriving
- Take it easy tool finder: colour coding according to profile and size
- Hexagonal anti-roll feature against rolling away
- Lasertip tips for more secure fit in the screw head

6-piece screwdriver set with Kraftform Plus handle for pleasant, ergonomic working that prevents blisters and calluses. Hard gripping zones for high working speeds whereas soft zones ensure high torque transfer. Partially Lasertip: the tip literally bites into the head of the screw and thereby prevents any slipping out of the screw head. "Take it easy" Tool Finder: colour coding according to profile and size. The hexagonal anti-roll feature prevents any bothersome rolling away at the workplace.

Web link

https://products.wera.de/en/screwdrivers_kraftform_plus_series_300_334_368_6.html

Wera - 334/368/6
05347778001 - 4013288122735

Wera Werkzeuge GmbH
Korzter Straße 21-25
D-42349 Wuppertal
Tel: +49 (0)2 02 / 40 45-0
E-Mail: info@wera.de



334/368/6 Screwdriver set and rack, 6 pieces

Kraftform Plus – Series 300




Set contents:


350 PH Screwdriver for Phillips screws, PH 1 x 80 mm

	05008710001	1x	PH 1 x 80 mm
	05008720001	1x	PH 2 x 100 mm



334 Screwdriver for slotted screws, 1.2 x 6.5 x 150 mm

	05110010001	1x	1.2 x 6.5 x 150 mm
---	-------------	----	--------------------

335 Screwdriver for slotted screws, 0.8 x 4 x 100 mm

	05110004001	1x	0.8 x 4 x 100 mm
---	-------------	----	------------------

368 Screwdriver for square socket head screws, # 1 x 80 mm

	05117682001	1x	# 1 x 80 mm
	05117684001	1x	# 2 x 100 mm

Lasertip prevents slipping out



Kraftform Plus screwdrivers - ergonomics you can grasp. They relieve the entire hand-arm system even when used intensively. Along with other technical and product advantages such as the Lasertip for a secure fit in the screw head, Kraftform screwdrivers are the ideal choice whenever manual screwdriving jobs are concerned.



It happens time and time again that the tip slips out of the screw head when screwdriving, sometimes damaging valuable surfaces or even causing injury. The tips of the Wera Lasertip screwdrivers are microscopically roughened by means of a laser. This rough surface literally "bites" itself firmly into the screw head. Slipping out becomes a thing of the past.

Reduced contact pressure



Wera Lasertip reduces the contact pressure required and enhances force transfer - meaning less screwdriving effort is required. Screwdriving becomes safer and easier.

Prevents hand injuries



The outstanding design of the Kraftform handle that fits perfectly into the hand prevents hand injuries such as blisters and calluses.

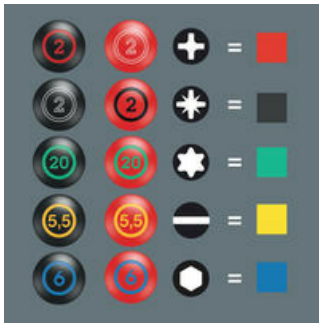
Web link

https://products.wera.de/en/screwdrivers_kraftform_plus_series_300_334_368_6.html

Wera - 334/368/6
05347778001 - 4013288122735

Wera Werkzeuge GmbH
Korzter Straße 21-25
D-42349 Wuppertal
Tel: +49 (0)2 02 / 40 45-0
E-Mail: info@wera.de

“Take it easy” Tool Finder



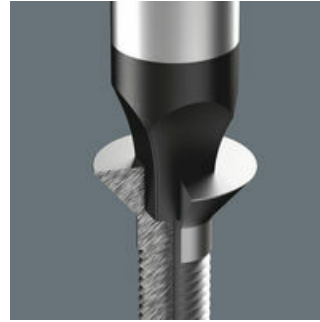
Screwdrivers with “Take it easy” tool finder: colour coding according to profile and size stamp.

Identification marking



The screw symbol and tip size identification markings on the handle make it easier to find the right screwdriver in the tool case, or at the workplace.

Wera Black Point tip



The Wera Black Point tip and a refined hardening process ensure long service life of the tip, improved corrosion protection and an exact fit.

Non-roll feature



The hexagonal non-roll feature prevents any rolling away at the workplace.

Web link

https://products.wera.de/en/screwdrivers_kraftform_plus_series_300_334_368_6.html

Wera - 334/368/6
05347778001 - 4013288122735

Wera Werkzeuge GmbH
Korzter Straße 21-25
D-42349 Wuppertal
Tel: +49 (0)2 02 / 40 45-0
E-Mail: info@wera.de