



| | | | |
|------------------------|----------------------|-------------------------------|--------------|
| EAN: | 4013288222008 | Size: | 150x42x28 mm |
| Part number: | 05004836001 | Weight: | 234 g |
| Article number: | 8790 C Impaktor Deep | Country of origin: | TW |
| | | Customs tariff number: | 82042000 |

- Robust Impaktor sockets for extremely high stress; for use with electric or pneumatic wrenches with 12.5 mm = 1/2" drive
- Long socket wrenches for low lying couplings, also suitable for fitting, protruding thread rods in confined spaces
- Hexagon profile for precise and profile-friendly screwdriving at a high power transmission
- With Take it easy tool finder: colour coding by size
- With cross-bore and ring socket for securing locking pin and locking ring of machine-operated tools

Long Impaktor socket for use with electric or pneumatic wrenches with 12.5 mm = 1/2" drive. For use even at low lying couplings and protruding thread rods. The Impaktor technology ensures a higher-than-average service life even at extreme requirements. With Take it easy tool finder with colour coding by size - to help you find the required tool quickly and easily. With hexagon profile with socket and well. The hexagon profile enables the transmission of high forces and loads the edges of the bolt or the screw head less than a double hexagon profile. For external hexagon bolts and screws.

Web link

https://products.wera.de/en/zyklop_ratchets_and_accessories_the_zyklop_ratchets_the_zyklop_ratchets_1_2_zyklop_accessories_1_2_8790_c_impaktor_deep.html

Wera - 8790 C Impaktor Deep
05004836001 - 4013288222008

Wera Werkzeuge GmbH
Korzter Straße 21-25
D-42349 Wuppertal
Tel: +49 (0)2 02 / 40 45-0
E-Mail: info@wera.de

For electric or pneumatic impact wrenches



The Impaktor technology ensures above-average service life of the Impaktor socket wrench plug-ins even under extreme conditions.

Long design



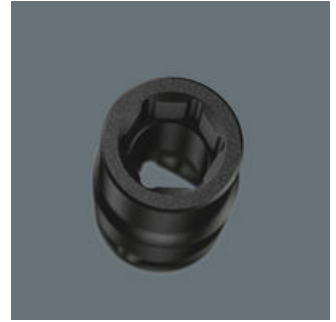
Due to the long design of the socket, screwdriving can also be achieved in small spaces. Fittings with protruding threaded rods are often also possible.

Cross-bore and ring socket



Due to the groove and the ring socket, the tool can be secured with a locking pin or O-ring on the power tool.

Profile-friendly power transmission



The hexagon profile allows the transmission of high forces and puts less strain on the edges of bolts or screw heads than a double hexagon profile. Fine-toothed ratchets also make the use of a double hexagon profile superfluous, even in confined spaces, thanks to their small return angle.

Take it easy tool finder system



Take it easy tool finder system - with profile and size colour-coding for quick and easy tool selection. Colour-coded system for hexagon drive screws (L-Keys, Zyklop bit sockets), external hex drive screws and nuts (Joker wrenches, Zyklop sockets and Zyklop bit sockets with holding function), and TORX® drive screws (L-Keys, Zyklop bit sockets).




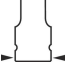
Web link

https://products.wera.de/en/zyklop_ratchets_and_accessories_the_zyklop_ratchets_the_zyklop_ratchets_1_2_zyklop_accessories_1_2_8790_c_impaktor_deep.html

Wera - 8790 C Impaktor Deep
05004836001 - 4013288222008

Wera Werkzeuge GmbH
Korzerter Straße 21-25
D-42349 Wuppertal
Tel: +49 (0)2 02 / 40 45-0
E-Mail: info@wera.de

Further versions in this product family:

| |  |  |  |  |
|--------------------|---|---|---|---|
| | mm | mm | mm | mm |
| 05004830001 | 13.0 | 83 | 21.0 | 24.0 |
| 05004831001 | 14.0 | 83 | 22.0 | 24.0 |
| 05004832001 | 15.0 | 83 | 24.0 | 24.0 |
| 05004833001 | 16.0 | 83 | 24.0 | 24.0 |
| 05004834001 | 17.0 | 83 | 26.0 | 26.0 |
| 05004835001 | 18.0 | 83 | 28.0 | 28.0 |
| 05004836001 | 19.0 | 83 | 28.0 | 28.0 |
| 05004837001 | 21.0 | 83 | 30.0 | 27.0 |
| 05004838001 | 22.0 | 83 | 32.0 | 28.0 |
| 05004839001 | 24.0 | 83 | 34.0 | 30.0 |
| 05004840001 | 27.0 | 83 | 38.0 | 33.0 |

Web link

https://products.wera.de/en/zyklop_ratchets_and_accessories_the_zyklop_ratchets_the_zyklop_ratchets_1_2_zyklop_accessories_1_2_8790_c_impaktor_deep.html

Wera - 8790 C Impaktor Deep
 05004836001 - 4013288222008

Wera Werkzeuge GmbH
 Korzelter Straße 21-25
 D-42349 Wuppertal
 Tel: +49 (0)2 02 / 40 45-0
 E-Mail: info@wera.de