



| | | | |
|------------------------|---------------|-------------------------------|--------------|
| EAN: | 4013288194800 | Size: | 139x19x19 mm |
| Part number: | 05118026001 | Weight: | 12 g |
| Article number: | 2050 PH Micro | Country of origin: | CZ |
| | | Customs tariff number: | 82054000 |

- Kraftform Micro screwdriver for cross-recess Phillips screws
- Multi-component Kraftform Micro handle for fast and ergonomic screwdriving
- Anti-roll feature and swivel cap for rapid twisting
- The Wera Black Point tip offers an exact fit and optimum corrosion protection
- Take it easy tool finder: colour coding according to profile and size
- E.g. for electricians, opticians, precision mechanics, jewellers or IT hardware fitters

Premium Wera Micro screwdrivers for precision mechanical couplings. By supporting the hand on the rotating cap, and due to the fast rotating zone below the rotating cap, lightning fast turning is possible. Time-consuming hand switching is eliminated. The power zone with integrated soft zones ensures the transmission of high tightening and loosening moments. Precision zone for correct rotation angles whilst adjusting. The Wera Black Point tip offers fitting accuracy and optimised corrosion protection. "Take it easy" tool finder with size stamping and colour coding by profile for quick and easy identification of the required tool.



Web link

https://products.wera.de/en/screwdrivers_series_kraftform_micro_2050_ph_micro.html

Wera - 2050 PH Micro
05118026001 - 4013288194800

Wera Werkzeuge GmbH
Korzter Straße 21-25
D-42349 Wuppertal
Tel: +49 (0)2 02 / 40 45-0
E-Mail: info@wera.de

Kraftform Micro handle



Screwdriving jobs in electrical and precision engineering applications are often tedious and time-consuming. We learned from users what is important for them: working speeds, torque, precision - and we then focused particularly on these issues.



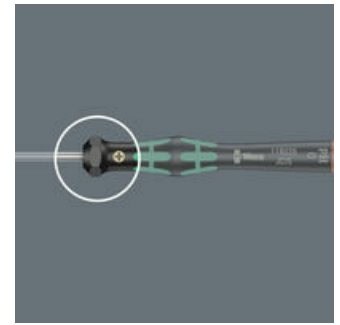
Multi-component screwdriver handle for ergonomic working.

The refined screwdriver for electronics technicians



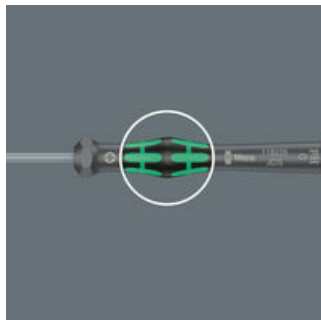
The Kraftform Micro, with its three zones and their specific arrangement, satisfies these requirements perfectly. The free-turning cap that provides support for the hand works with these advantages, enabling quick and easy precision work.

The precision zone



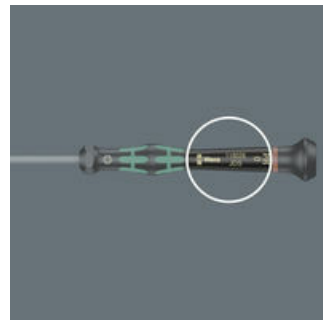
The precision zone directly above the blade gives the user a better feel for the right rotation angle during fine adjustment work.

The power zone



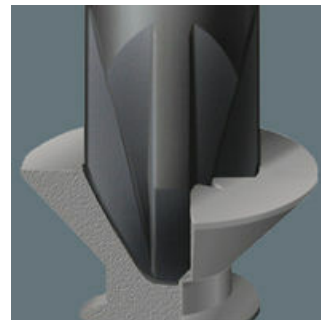
The power zone has integrated soft zones near the blade tip to ensure high torque transfer for loosening or tightening screws without losing contact with the screw.

The fast-turning zone



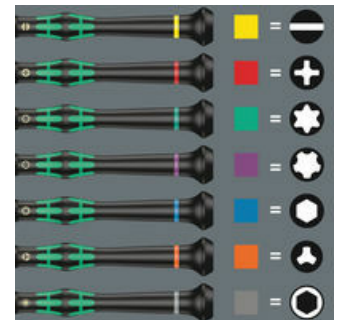
The fast-turning zone just below the rotating cap allows rapid twisting.

Wera Black Point tip



The Wera Black Point tip and a refined hardening process ensure long service life of the tip, improved corrosion protection and an exact fit.

"Take it easy" Tool Finder



Screwdrivers with "Take it easy" tool finder: colour coding according to profile and size stamp.






Web link

https://products.wera.de/en/screwdrivers_series_kraftform_micro_2050_ph_micro.html

Wera - 2050 PH Micro
05118026001 - 4013288194800

Wera Werkzeuge GmbH
Korzerter Straße 21-25
D-42349 Wuppertal
Tel: +49 (0)2 02 / 40 45-0
E-Mail: info@wera.de

Further versions in this product family:

| |  |  mm |  mm |  mm |  inch |
|---------------------------------|---|---|---|---|---|
| 05345290001 ^{1),2)} | PH 000 | 40 | 97 | 1.5/2.5 | 1 9/16" |
| 05118019001 ^{1),2)} | PH 00 | 40 | 97 | 1.8/2.5 | 1 9/16" |
| 05118020001 ¹⁾ | PH 00 | 60 | 97 | 2.5 | 2 3/8" |
| 05118026001³⁾ | PH 0 | 40 | 97 | 3.0 | 1 9/16" |
| 05118022001 ³⁾ | PH 0 | 60 | 97 | 3.0 | 2 3/8" |
| 05118023001 | PH 1 | 60 | 97 | 4.0 | 2 3/8" |
| 05118024001 | PH 1 | 80 | 97 | 4.0 | 3 1/8" |

1) Optimised for Asian PH screws

2) On the output side, the blade is turned to a nominal length of 10 mm

3) Size 0 modified according to JCIS 0 (Japanese Camera Industrial Standard)

Web link

https://products.wera.de/en/screwdrivers_series_kraftform_micro_2050_ph_micro.html

Wera - 2050 PH Micro

05118026001 - 4013288194800

Wera Werkzeuge GmbH

Korzerter Straße 21-25

D-42349 Wuppertal

Tel: +49 (0)2 02 / 40 45-0

E-Mail: info@wera.de