

# Tool-Check 1 SB, 38 pieces

## Zyklop Mini 1



<b>EAN:</b>	4013288162526	<b>Size:</b>	170x100x35 mm
<b>Part number:</b>	05073220001	<b>Weight:</b>	497 g
<b>Article number:</b>	Tool-Check 1 SB	<b>Country of origin:</b>	CZ
		<b>Customs tariff number:</b>	82079030

- 1/4" bit ratchet, tough-absorbing bits, Rapidaptor holder, adaptor and 1/4" sockets
- Ideal for working in confined spaces
- Tough viscous bits for universal use
- Use of 1/4" sockets also possible with the Wera adaptor 870/1
- Take it easy tool finder: colour coding according to profile and size

Ratchet, bits and sockets in a minimum of space - as compact as it gets. Simple operation, even with just one hand, in confined working spaces. Drop-forged, full-steel design and fine-pitched mechanism with 60 teeth that allows a small return angle of 6° for precise working. Easy left/right switchover. Ergonomically designed ratchet head and lever. Suitable for 1/4" bit and socket take-up. The use of 1/4" sockets is also possible with the Wera adaptor 870/1. Tough viscous bits for universal use. Manual and power tool socket insert (ISO 2725-Part 3) by Wera allows applications both in manual as well as power tools. "Take it easy" Tool Finder with colour coding according to size - for simple and rapid accessing of the required tool. Featuring a good grip to allow easy pick-up even with oily hands. Ball stop groove, for hex head bolts and nuts; chrome vanadium steel, matt chrome-plated.



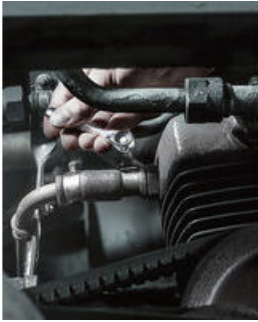
### Web link

[https://products.wera.de/en/zyklop\\_ratchets\\_and\\_accessories\\_zyklop\\_mini\\_zyklop\\_mini\\_1\\_tool-check\\_1\\_sb.html](https://products.wera.de/en/zyklop_ratchets_and_accessories_zyklop_mini_zyklop_mini_1_tool-check_1_sb.html)

Wera - Tool-Check 1 SB  
05073220001 - 4013288162526

Wera Werkzeuge GmbH  
Korzter Straße 21-25  
D-42349 Wuppertal  
Tel: +49 (0)2 02 / 40 45-0  
E-Mail: info@wera.de

**The Zyklop Mini Ratchets**

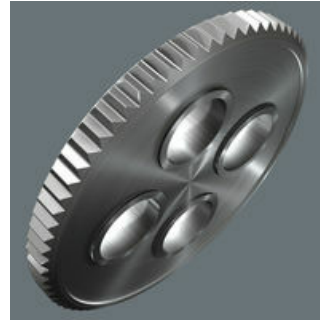


Zyklop Mini



For all difficult-to-access applications.

**Small return angle**



The fine tooth mechanism, with its 60 teeth, allows a small return angle of only 6° - ideal for precision work.

**Simple direction change**



Simple switching between left/right operations.

**Rapid screwdriving**



High working speeds can be attained with the Zyklop Mini bit ratchet. The thumb wheel is important, enabling more rapid screwdriving, and the lever of the Zyklop Mini only needs to be used for the final tightening of the screw.

**Slim design**



Its slim design makes it ideal for all particularly confined working situations.

**Is such a small tool sufficiently resilient?**



The Zyklop Mini 1 can withstand at least 65 Nm. That is far more power than can normally be transferred to such a small tool.

**Bit-Check as a lever**



The Bit-Check itself can be used as a lever.

**Web link**

[https://products.wera.de/en/zyklop\\_ratchets\\_and\\_accessories\\_zyklop\\_mini\\_zyklop\\_mini\\_1\\_tool-check\\_1\\_sb.html](https://products.wera.de/en/zyklop_ratchets_and_accessories_zyklop_mini_zyklop_mini_1_tool-check_1_sb.html)

Wera - Tool-Check 1 SB  
05073220001 - 4013288162526

Wera Werkzeuge GmbH  
Korzter Straße 21-25  
D-42349 Wuppertal  
Tel: +49 (0)2 02 / 40 45-0  
E-Mail: [info@wera.de](mailto:info@wera.de)

## Tool-Check 1 SB, 38 pieces

### Zyklop Mini 1

#### Set contents:

8001 A Bit Ratchet 1/4", 1/4" x 87 mm



1x 1/4" x 87 mm



870/1 Adaptor, 1/4" x 25 mm



0513600001<sup>1)</sup> 1x 1/4" x 25 mm

1) With friction ball; for manual nut spinner sockets



889/4/1 K Rapidaptor Universal Bit Holder, 1/4" x 50 mm



05052502001 1x 1/4" x 50 mm



851/1 TZ bits, PH 1 x 25 mm



05056505001 2x PH 1 x 25 mm

05056510001 3x PH 2 x 25 mm

05056525001 1x PH 3 x 25 mm



#### Web link

[https://products.wera.de/en/zyklop\\_ratchets\\_and\\_accessories\\_zyklop\\_mini\\_zyklop\\_mini\\_1\\_tool-check\\_1\\_sb.html](https://products.wera.de/en/zyklop_ratchets_and_accessories_zyklop_mini_zyklop_mini_1_tool-check_1_sb.html)

Wera - Tool-Check 1 SB  
05073220001 - 4013288162526

Wera Werkzeuge GmbH  
Korzter Straße 21-25  
D-42349 Wuppertal  
Tel: +49 (0)2 02 / 40 45-0  
E-Mail: [info@wera.de](mailto:info@wera.de)

Zyklop Mini 1

855/1 TH bits, PZ 1 x 25 mm



05056910001	1x	PZ 1 x 25 mm
05056915001	3x	PZ 2 x 25 mm
05056925001	1x	PZ 3 x 25 mm

867/1 TZ TORX® bits, TX 10 x 25 mm



05066305001	1x	TX 10 x 25 mm
05066308001	1x	TX 15 x 25 mm
05066310001	1x	TX 20 x 25 mm
05066312001	1x	TX 25 x 25 mm
05066315001	1x	TX 30 x 25 mm
05066320001	1x	TX 40 x 25 mm

867/1 Z TORX® B0 bits with bore hole, TX 10 x 25 mm



05066500001	1x	TX 10 x 25 mm
05066505001	1x	TX 15 x 25 mm
05066510001	1x	TX 20 x 25 mm
05066515001	1x	TX 25 x 25 mm
05066525001	1x	TX 30 x 25 mm

800/1 TZ bits, 1 x 5.5 x 25 mm



05056225001	1x	1 x 5.5 x 25 mm
-------------	----	-----------------

840/1 Z bits, 3 x 25 mm



05056315001	1x	3 x 25 mm
05056320001	1x	4 x 25 mm
05056325001	1x	5 x 25 mm
05056330001	1x	6 x 25 mm
05056335001	1x	8 x 25 mm

8790 HMA Zyklop 1/4" socket, 5.5 x 23 mm



05003504001	1x	5.5 x 23 mm
05003505001	1x	6 x 23 mm
05003506001	1x	7 x 23 mm
05003507001	1x	8 x 23 mm
05003509001	1x	10 x 23 mm
05003511001	1x	12 x 23 mm
05003512001	1x	13 x 23 mm

Web link

[https://products.wera.de/en/zyklop\\_ratchets\\_and\\_accessories\\_zyklop\\_mini\\_zyklop\\_mini\\_1\\_tool-check\\_1\\_sb.html](https://products.wera.de/en/zyklop_ratchets_and_accessories_zyklop_mini_zyklop_mini_1_tool-check_1_sb.html)

Wera - Tool-Check 1 SB  
05073220001 - 4013288162526

Wera Werkzeuge GmbH  
Korzter Straße 21-25  
D-42349 Wuppertal  
Tel: +49 (0)2 02 / 40 45-0  
E-Mail: info@wera.de