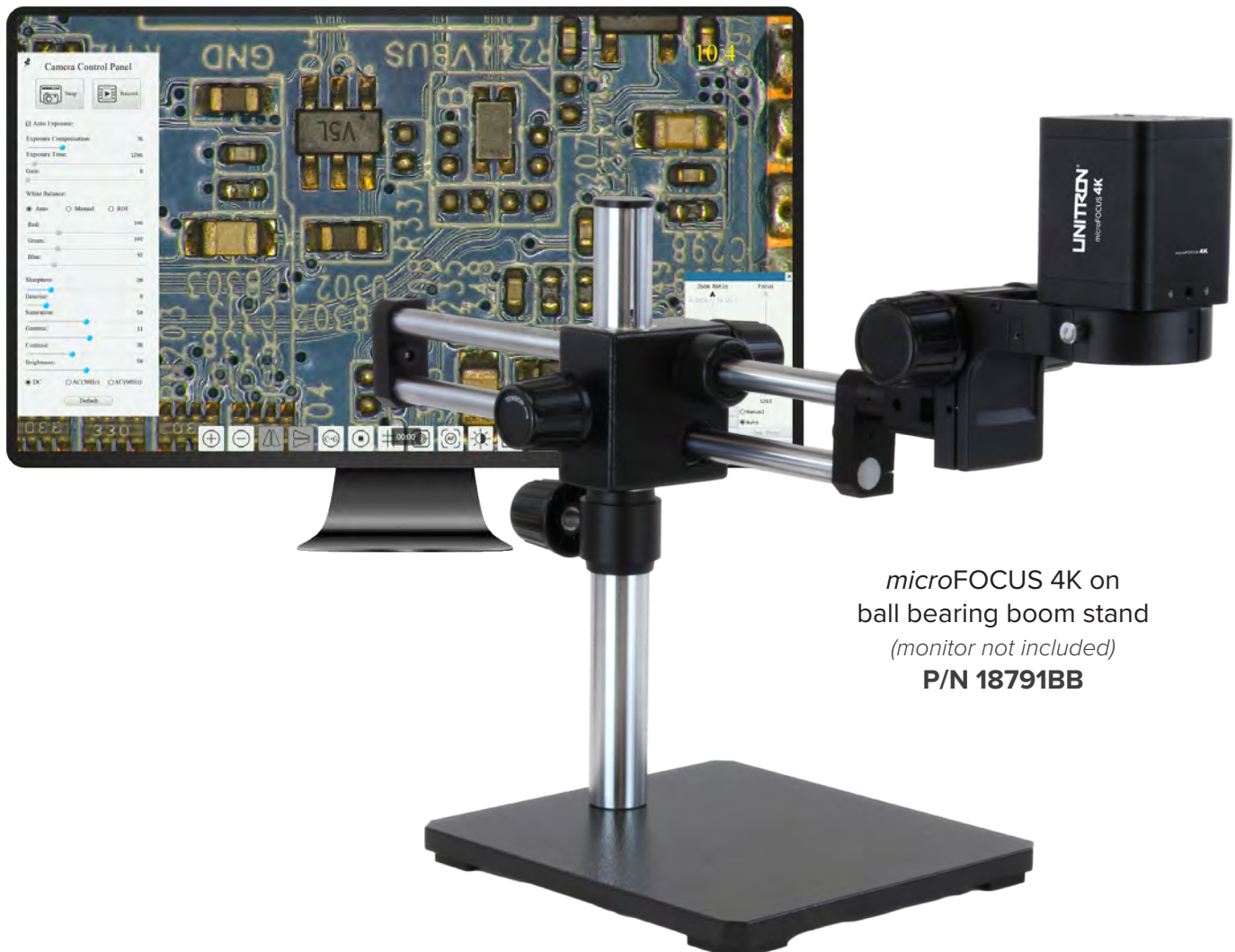




*micro*FOCUS 4K

Autofocus Digital Microscope

Full 4K digital microscope with autofocus
and extreme depth of field
for fast and accurate inspection.



*micro*FOCUS 4K on
ball bearing boom stand
(monitor not included)
P/N 18791BB

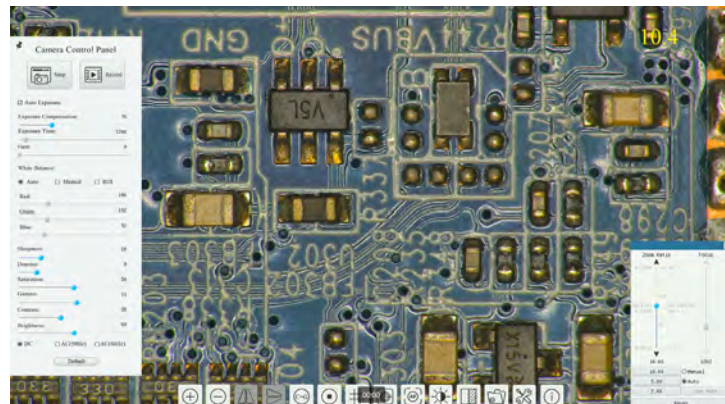
Speed, Resolution & Convenience in an Easy-to-Use, Stand-alone Inspection Solution!

The NEW *micro*FOCUS 4K autofocus digital microscope from LX Microscopes by UNITRON features built-in software for operation without the need for a PC, and



Key Features

- Live measurement and annotation tools
- Flexibility to save images, video and measurements to a USB flash drive or SD card
- Compare live with saved images using the split screen function
- Review saved images and video in the gallery
- Eliminate bench clutter with the wireless mouse and integrated LED ring light
- 4K/1080p auto-switching to accommodate monitor resolution
- **Hint:** Use AccuView or AccuView Lite PC software for expanded control and enhanced image processing and analysis



Built-in software for image capture, processing, calibration, measurement and more!

Ports for wireless USB mouse (controls built-in software), HDMI for live video streaming, save images to SD card or USB flash drive, data transfer via USB Video port or LAN Ethernet connection.

Mounting Flexibility for a Variety of Applications



*micro*FOCUS 4K on
ball bearing boom stand
P/N 18791BB



*micro*FOCUS 4K on
pole stand
P/N 18790PS

** monitors not included*

With a Ø76mm mounting ring, the *micro*FOCUS 4K can be easily mounted to boom, pole or flex arm stands. Other mounting options are available via 2 x M4 holes or single 1/4-20 threaded hole for mounting to a copy stand, tripod, and more!



*micro*FOCUS 4K on
articulating flex arm stand
P/N 18793VE



microFOCUS 4K

Autofocus Digital Microscope

SPECIFICATIONS

MICROSCOPE

Sensor	Sony IMX415 STARVIS CMOS, color
Sensor Size	1/2.8" (5.57mm x 3.13mm)
Pixel Size	1.45µm
Resolution	8MP (3840px x 2160px)
Frame Rate	30fps @ 3840x2160 (HDMI, Ethernet, USB)
Operating Environment	-10°C – 50°C 30 – 80% RH
Connectivity	USB mouse: control built-in software USB 2.0: Image storage (USB flash drive) or data transfer to PC (requires AccuView/AccuView Lite) HDMI: Image streaming to monitor LAN: Data transfer via Ethernet connection (requires AccuView/AccuView Lite) SD Card: Image storage (not included)
Monitor	Optional 13.3" attachable 4K monitor, or user-supplied HDMI monitor
Power	DC12V3A (power adapter included; UL/CE/FCC)

OPTICAL

Working Distance	250mm
Depth of Field	205mm – 255mm
Zoom Range	1x – 18x
FOV (mm)	1x: 255 x 145 18x: 14.2 x 8
Resolution (lp/mm)	160

BUILT-IN SOFTWARE

User Interface	Control with USB mouse (included)
Image Capture	8MP (3840x2160), JPG or TIF, save to SD card or USB flash drive
Video Record	8MP (3840x2160), 30fps, H264/H265 encoded MP4, save to SD card or USB flash drive
Camera Control Menu	Includes: Exposure, Gain, White Balance, Sharpness, Denoise, Saturation, Gamma, Contrast, Brightness
Measurement Tools	Includes: Calibration, Measurement, Measurement Parameter Export
Synthesis Controls	Includes: Zoom, Flip, Freeze, Crosshair, LED Control, Autofocus, Comparison, Browser, Setting, Version info
Autofocus Control	Includes: Zoom, Autofocus, One Push, Manual Focus, Reset

