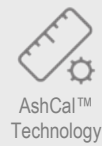


INSPEX 3

DIGITAL MICROSCOPE SYSTEM



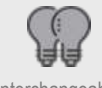
AshCal™ Technology



2D Measurement, Annotation, & Graticles



Set User Privileges



Interchangeable Lighting

Intuitive Software Interface Simplifies Operation & Controls



Image Stacking



On Screen Preset Buttons



Save to Network



Image Stamping

Key Features

The new Inspex 3 is the latest evolution in Digital Imaging Systems. Ergonomic, fully integrated full HD (1080p) digital microscope and measurement system that operates without a PC.

The GUI (Graphical User Interface) provides intuitive and efficient operation and control of the Inspex 3's full application suite with only a mouse (included) and monitor (not included).

The Inspex 3 platform has a powerful image processing and control engine that delivers superb full HD live video image quality at 60 frames per second enabling it to be used as a solution in a broad range of quality control, testing, rework, assembly, inspection and documentation tasks across many industries.

INCREASED PRODUCTIVITY: The intuitive software interface simplifies operation and controls increasing productivity and efficiency. AshCal™ calibration technology tracks and adjusts to zoom changes — no need for time-consuming zoom change re-calibrations. With the on-screen or optional keypad preset buttons, users have quick access to pre-configured, part-specific system settings.

QUALITY ASSURANCE: User privileges offer control of system-related operations to ensure standardized inspection. Rapidly check parts against customized overlays with tolerance limits.

PRACTICAL FUNCTIONALITY: Simple, one click Auto Focus with on-screen indicator makes image capture a breeze. Image stamping with time, date, user and magnification level for traceability throughout your inspection process. Other features include on-screen pre-set mode, 2-D line measurement, and on-screen overlays.

The Inspex 3's cable-free interchangeable illumination ensures shadow-free illumination, glare reduction and can be directly controlled via the on-board software.



Removable USB Image Capture



Save & Recall Images Internally



Transfer Images To PC Via USB



Intuitive Graphical User Interface



No PC Required

Specifications

| | |
|----------------------|---|
| Camera Resolution | HD 1080p; 1920x1080; 60fps |
| Zoom | 5D Lens (included); 2.1x—131.6x (24" screen) |
| Basic Functions | Auto/Manual focus, brightness adjustment, magnification adjustment, snapshot, overview, high contrast mode, height adjustable |
| Features | AshCal™ calibration and tracking throughout zoom range, on-screen pre-set mode, 2-D line measurement, on-screen overlays, auto-focus, networkable, image stacking, image capture and user access controls |
| Input / Output Modes | HDMI Output • USB 2.0 port x 4 • Mini USB General purpose IO port x 3 • DC 24v power jack |
| Storage | 16GB internal storage; removable USB image storage, USB on the Go |
| Monitor Format | HD ready or Full HD 16:9 (recommended) - monitor not included |
| Power Supply | 100/240v; 50/60Hz; 24w power consumption |
| Dimensions / Weight | 216mm X 165mm X 170mm (LWH) / 1.5kg |
| Temperature | Storage: -10C to +60C Operating: +5C to +40C |

Magnification

| Lens Diopter (mm) | Working Distance (mm) | OPTICAL Magnification Range | OPTICAL X-Axis FOV (mm) | OPTICAL Y-Axis FOV (mm) | DIGITAL Magnification Range | DIGITAL X-Axis FOV (mm) | DIGITAL Y-Axis FOV (mm) |
|-------------------|-----------------------|-----------------------------|-------------------------|-------------------------|-----------------------------|-------------------------|-------------------------|
| 5 | 195 | 2.1 — 65.6 | 240 — 8.34 | 135 — 4.69 | 66.1d — 131.6d | 8.34 — 4.13 | 4.69 — 2.32 |
| 10 Plan 1x | 79 | 4.1 — 130 | 80 — 4.1 | 71 — 2.2 | 130.5d — 259.9d | 4.15 — 2.08 | 2.32 — 1.16 |
| 25 | 44 | 51.7 — 323.4 | 3.5 — 1.75 | 1.75 — 0.9 | 325d — 646.7d | 1.65 — 0.85 | 0.9 — 0.5 |

Design, features and specifications are subject to change without notice.



UNITRON®

EXCELLENCE BY DESIGN SINCE 1952

INSPEX 3

Simply Smarter



Powerful, flexible and intuitive HD digital microscope for simpler, ergonomic and efficient inspection.

UNITRON®

73 Mall Drive • Commack, NY 11725 • 631-543-2000
info@unitronusa.com • www.unitronusa.com

v121620

Powerful, flexible & intuitive HD digital microscope. Plug in & go!

Inspex 3 is the latest evolution from Ash incorporating the AshCam™ module with a wide range of additional and improved capabilities.



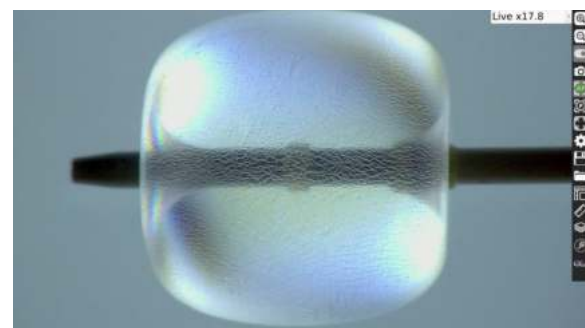
Superb Image Quality

Experience unrivalled Full HD video imaging never seen before in an Ash system. The Inspex 3 offers an enhanced, vibrant, crystal clear image for even the most demanding inspection applications.



Manual Rocker Focus

Save time by quickly adjusting the focus using the rocker icon to inspect the area of interest on a sample part when in manual focus mode.



Superfast Auto-Focus

Place any part under the camera and it instantly adjusts the focus position allowing you to quickly and seamlessly inspect your part without having to adjust manual focus or change the height of the part.



SpotFocus™

Quickly focus on the area of interest by simply using the mouse pointer. Improve accuracy and reduce human error with the capabilities of Spot Focus*.

**Global patent applied for by ASH.*

AshTruColour™ — True Color Reproduction

View true color reproduction of your sample with the Inspex 3. Replicate real and accurate colors as seen with the naked eye for true color representation.

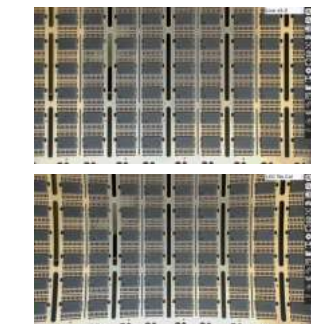


RTLDC™

Real-Time Lens Distortion Correction*.

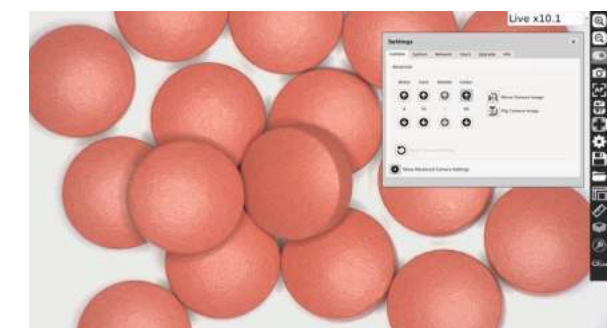
Lens distortion is inherent in all microscopes. Image distortion at the outer edges of large samples is automatically corrected by the Inspex 3.

**Global patent applied for by ASH.*



Advanced Camera Settings

The new Advanced Camera Settings gives the user more power to enhance the image for a wide range of inspection and measurement capabilities. Tailor sharpness, contrast, saturation and camera shutter speed to suit your particular application.



No Video Latency

The video from the Inspex 3 has zero delay. It's 3-times faster than our previous systems. View parts in real time with no video lag, allowing you to comfortably inspect, rework, modify and assemble any part. There is no delay between movement under the camera and what you see on the screen.

