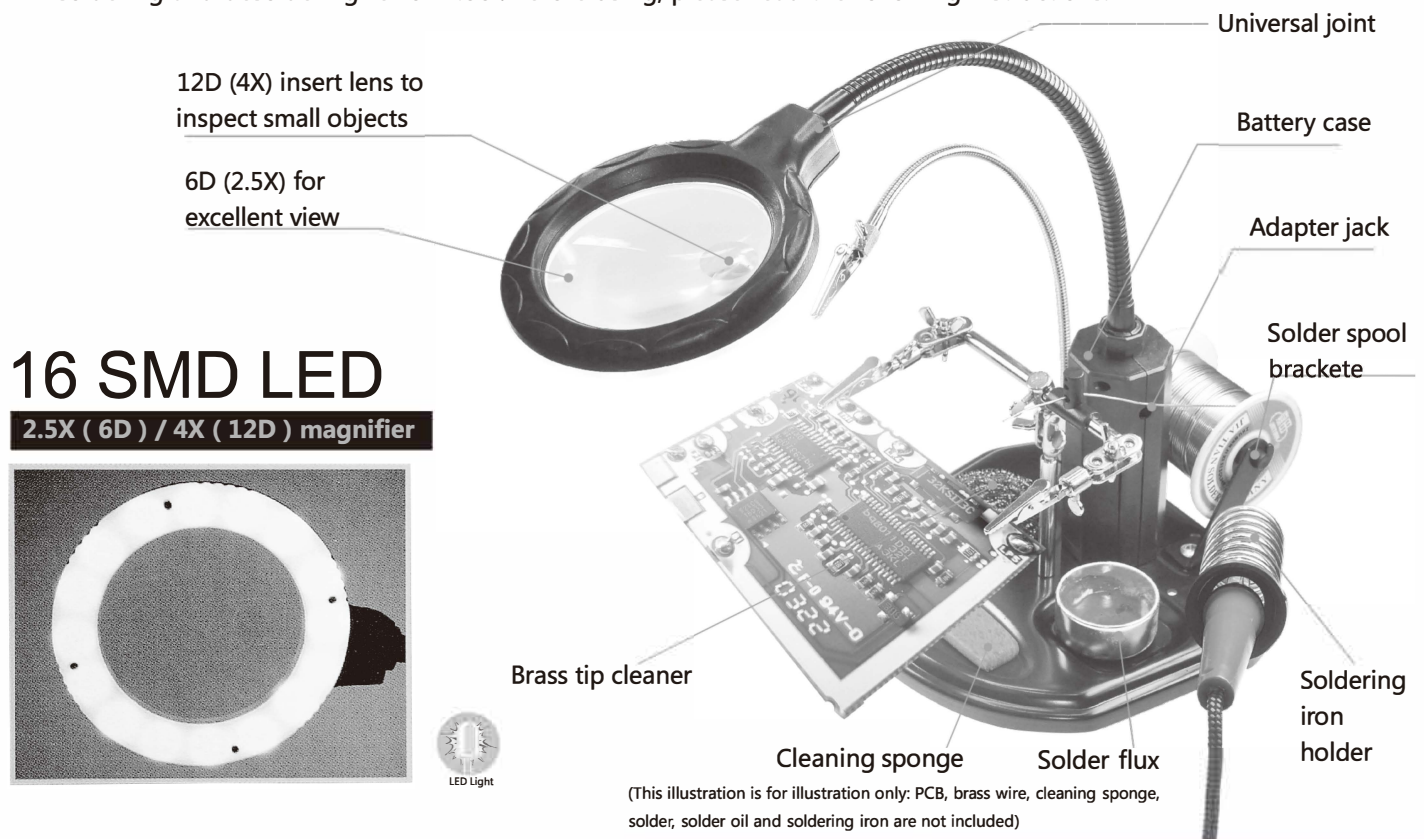


LED Magnifier With Auxiliary Clip

SOLDERING HELPING HAND WITH LED MAGNIFIER

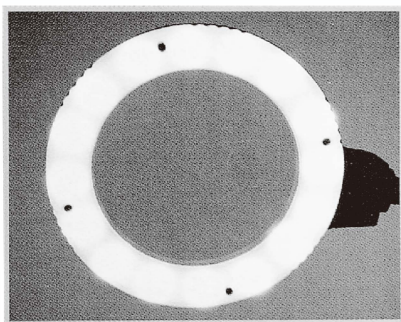
Thank you very much for purchasing Soldering Helping Hand with LED Magnifier. This product is ideal for PCB soldering and desoldering rework tool. Before using, please read the following instructions:



(This illustration is for illustration only: PCB, brass wire, cleaning sponge, solder, solder oil and soldering iron are not included)

16 SMD LED

2.5X (6D) / 4X (12D) magnifier



FEATURES:

- Comes with 16 SMD LEDs illuminating, energy saving and super bright.
- The magnifier is on a flexible neck that gives you 2.5 X (6D) and 4X(12D) magnification for finishing those fine solder joints.
- The adjustable 3 helping hands clips feature precise positioning and secure gripping your work.
- The magnifier is powered by either 4 AA batteries or external power adapter.
- The set includes Solder Spool Brackets, Soldering Iron Holder, Cleaning Sponge, Brass Tip Cleaner and Solder Flux.

HOW TO USE:

- Take the lamp out of the packaging and place it on a level, even surface.
- Adjust the lampholder and the light-arm as desired.
- Insert 4 pieces AA Batteries or put the power, adaptor to get the unit powered on.
- For use beyond the reach of a wall socket, the device can also be powered by 4*AA batteries.
- Switching on the LED magnifying lamp, then start your operation.

| Category | Magnifier with auxiliary clip |
|-----------------------------------|--|
| Model | TNP100196 |
| Material | Metal aluminum alloy frame and cast iron base, Glass lenses |
| Package | Colox box |
| Package size | 19CM*18.8CM*17.3CM |
| Package Weight | About 1725g |
| Color | Black |
| Light | 16 pcs SMD LEDs |
| Magnifying Lens Size | Ø85mm & Ø21mm |
| Magnification | 2.5X (6D)+4X (12D) |
| Magnification Material | Optical glass |
| Neck length (for magnifier) | 265mm |
| Neck length (for alligator clips) | 290mm |
| Base Size | 185×170mm |
| Battery | 1.5V AA × 4pcs batteries (not included), External DC to USB cable (Included) |
| Input | AC 100~250V, 50/60Hz |
| Output | DC 6V, 500mA |
| Content | 1 X User Manual 1 X Auxiliary clip 1 X Soldering iron stand 1 X Magnifying glass 1 X DC to USB cable |



CAUTION FOR SAFE USING:

- The product can only be used indoors, never outdoors. Do not expose to moisture, under any circumstances.
- The product is not a toy and should be kept out of the reach of children.
- Do not look directly into the light source, when the lamp is in operation.
- Never leave the lens unattended in direct sunlight or where light can shine through it. This constitutes a fire hazard.
- Never leave the lamp without supervision when it is in use.
- Turn the power OFF when no longer using the product or when leaving it unattended.

TECHNI-PRO

Techni-Pro is a TestEquity private label brand.
www.TestEquity.com/Brand/Techni-Pro