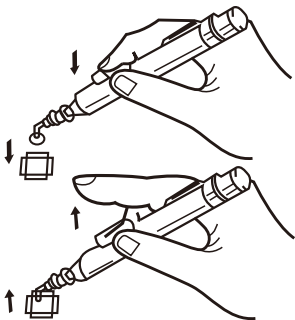


# 939

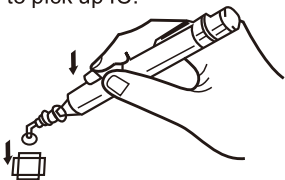
## VACUUM SUCTION PEN

### ■ Direction:

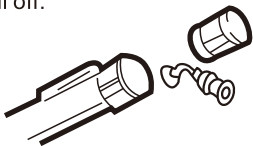
- ① Install a proper IC suction head on 939 suction pen.
- ② After installing the head, put the head on IC.



- ③ Press the button on the suction pen to discharge the air, then release the button to produce vacuum suction force to pick up IC.



- ④ Put the IC on appointed place, press the button, the vacuum pen discharges air to let the IC fall off.



- ⑤ The suction pen have three size head: small, medium and larger.

- (1) Larger size for 40G.
- (2) Medium size for 18G.
- (3) Small size for 3G.