



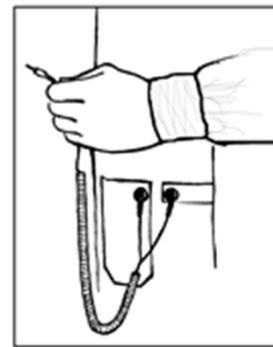
X2-HOJ-23C-(Size)

Tech Wear Style Sheet

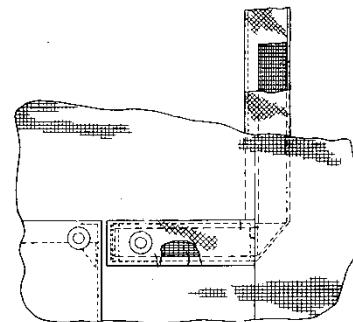


This ESD jacket has Tech Wear's X2 feature, which makes this garment compatible with DUAL continuous monitoring systems, such as the 3M 724 Monitor.

The coat is designed for comfort with a contoured open neckline, roomy raglan sleeves and snap front. The matching ESD knit cuffs and ground snap connections on the left hip pocket allows for hands-free movement without tethering one hand, which is required when using a wrist strap connected to a ground cord.



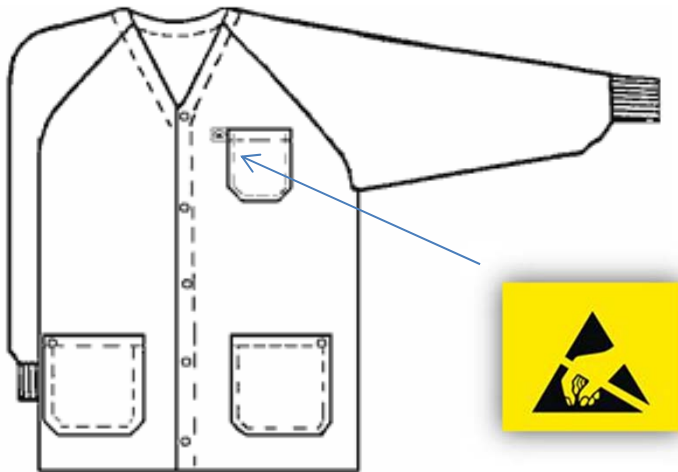
| | |
|------------------------|---------------------------------|
| Part Number | X2-HOJ-23C-(Size) |
| Style | Hallmark Jacket |
| Colors | Blue |
| Sleeve | Long sleeve with ESD knit cuffs |
| Closure | Front Snap |
| Length | Shorter hip-length jacket |
| Size range | X-Small thru 8X-Large |
| Fabric | OFX-100 |
| Content | 87% Poly/Carbon 13% |
| Fabric Weight | 2.3 ounces per square yard |
| Specification | ANSI/ESD STM2.1-Cat. 3 |
| Guarantee | 100 wash |
| Country of Manufacture | USA |





X2-HOJ-23C-(Size)

This Hallmark-style jacket comes with two 4mm male ground snaps on the left hip pocket. These snap connections are for attaching a dual-path ground cord. Using the garment in this way eliminates the need for a wrist strap. These connections are also used for testing and/or monitoring that the garment and the wearer are grounded. The “Reaching Hand Symbol” next to the breast pocket indicates that this garment is a tool for the prevention of static discharge. Surface resistivity of the fabric is 1×10^5 and the sleeve-to-sleeve resistance of the garment is guaranteed to stay below 3.5×10^7 for 100 washes or 2 years. This garment meets the requirements of ANSI/ESD STM 2.1-2013, Category 3.



| Dimensions for Hallmark Styles | | | | | | | | | | | | |
|--------------------------------|-------|-------|-------|-------|-------|-------|-------|-------|-------|-------|-------|-------|
| Size | XS | SML | MED | LRG | XL | 2XL | 3XL | 4XL | 5XL | 6XL | 7XL | 8XL |
| Fits Chest | 30-32 | 34-36 | 38-40 | 42-44 | 46-48 | 50-52 | 54-56 | 58-60 | 62-64 | 66-68 | 70-72 | 74-76 |
| Finished Chest | 41 | 43 | 47 | 50 | 54 | 57 | 60 | 64 | 66 | 70 | 74 | 80 |
| Finished Sleeve | 30 | 31 | 32 | 34 | 35 | 36 | 36 | 39 | 40 | 40 | 40 | 40 |
| Jacket Length | 30 | 31 | 32 | 34 | 35 | 36 | 36 | 39 | 40 | 40 | 41 | 42 |

Note: All measurements are rounded to the nearest inch.
 Length measurements are measured from center back of neck to finished hem.
 Finished sleeve is measured from center back of neck to bottom of cuff.