



LOC-13C-(Size)

Tech Wear Style Sheet



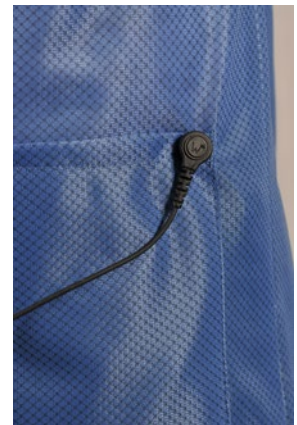
ESD Knit Cuffs
(not pictured)

This ESD coat is designed to ground the garment and the wearer through a ground cord connected at the hip pocket snap. This allows for hands-free movement without tethering one hand, which is required when using a wrist strap connected to a ground cord.

The light-weight fabric makes this style one of our most popular garments.

Surface resistivity of the fabric is 1×10^5 and the sleeve-to-sleeve resistance of the garment is guaranteed to stay below 3.5×10^7 for 100 washes or 2 years.

Part Number	LOC-13C-(Size)
Style	Traditional Coat
Colors	White (plus 10 other colors)
Sleeve	Long sleeve with Cuff Option
Closure	Front Snap
Length	Knee-length Coat
Size range	X-Small thru 8X-Large
Fabric	OFX-100
Content	87% Poly/Carbon 13%
Fabric Weight	2.3 ounces per square yard
Specification	ANSI/ESD STM2.1-Cat. 3
Guarantee	100 wash
Country of Manufacture	USA



Standard Ground Cord
connected to snap on
pocket

(See back for dimensions & additional information)

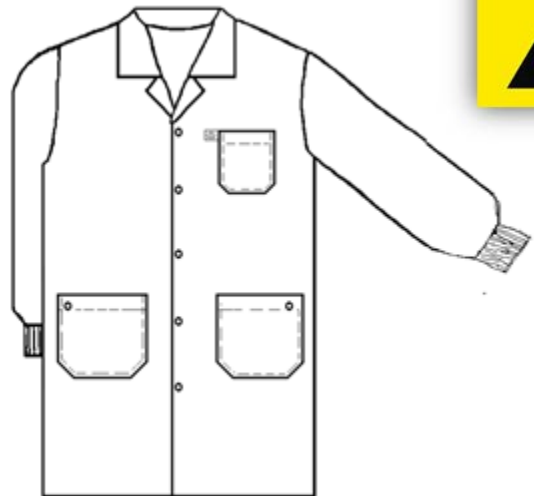


LOC-13C-(Size)

This traditional-style coat comes with 4mm male ground snaps on the hip pockets and grid-knit ESD cuffs at both sleeve terminations. The male pocket snap connection is for attaching a standard ground cord, and the . This connection is also used for testing and/or monitoring that the garment and the wearer are grounded. The “Reaching Hand Symbol” next to the breast pocket indicates that this garment is a tool for the prevention of static discharge. This garment is available in most colors for immediate shipment.

Part numbers by color:

White	LOC-13C-(Size)
Blue	LOC-23C-(Size)
Burgundy	LOC-33C-(Size)
Grey	LOC-53C-(Size)
Navy	LOC-63C-(Size)
Pink	LOC-73C-(Size)
Teal	LOC-83C-(Size)
Black	LOC-93C-(Size)
Digi-camo	LOC-D3C-(Size)
HiViz Yellow	LOC-HV03C-(Size)
HiViz Orange	LOC-HVY3C-(Size)



Dimensions for LOC-23C												
Size	XS	SML	MED	LRG	XL	2XL	3XL	4XL	5XL	6XL	7XL	8XL
Fits Chest	30-32	34-36	38-40	42-44	46-48	50-52	54-56	58-60	62-64	66-68	70-72	74-76
Finished Chest	37	41	45	48	51	55	59	63	67	71	75	80
Finished Sleeve	31	31	32	34	35	36	36	36	37	38	39	39
Coat Length	34	37	38	39	39	40	40	40	40	40	40	40

Note: All measurement tolerances are 0-12" +/- 1/2" and 12-above +/- 1"
Length measurements are measured from center back of neck to finished hem.
Finished sleeve is measured from center back of neck to bottom of cuff.