



**Sturtevant
Richmont®**

Torque Measurement Systems

Sturtevant Richmond

The Tools You Trust.

555 Kimberly Drive, Carol Stream, IL 60188

Phones Worldwide: +1-847/455-8677

US Toll Free Only: 800/ 847/455-0347

CustomerService@srtorque.com

www.srtorque.com

Instruction Sheet

S-Series Beam Torque Wrenches

Cautions

- Always wear appropriate personal safety equipment when using hand tools.
- Do not use the torque wrench for other than its designed purpose.
- Do not use any torque wrench at a torque level in excess of its designed capacity.

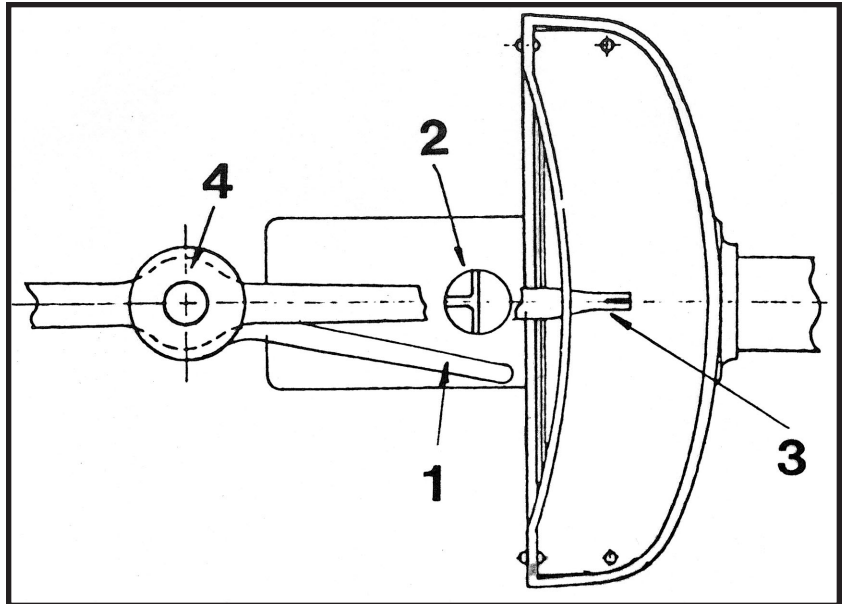
Figure 1 - Key

1. Trigger Finger
2. Trigger
3. Pointer Tip
4. Trigger Finger Lock Nut

Setting the Sensory Signal

Adjust the Trigger Finger (1) so that it trips the Trigger (2) at the instant the Pointer Tip (3) indicates the desired torque on the torque scale.

The Trigger Finger Lock Nut (4) need only be tightened by hand to hold the Trigger Finger securely. Do not use pliers or other tools to tighten this nut.



Please note that the Trigger Finger (1) does not indicate the torque and not effort should be made to align this component with the increment markings on the scale when setting the sensory signalling mechanism.

Torque Wrench Maintenance

- Use a soft damp cloth to wipe dirt off of the tool.
- Do not immerse the torque wrench in any liquid or cleaning compound.
- The torque wrench requires no lubrication.

Additional Information

If you desire additional information pertinent to this or other Sturtevant Richmond products, contact your local distributor, or contact the factory using the information at the top of this document.