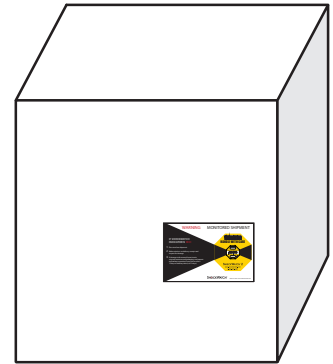
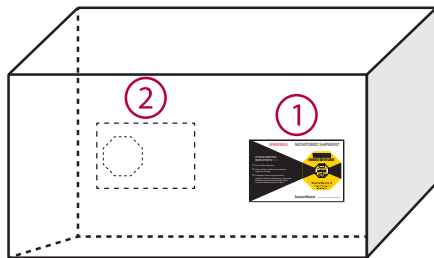


ShockWatch® 2 Mounting Instructions

- 1) Mount the ShockWatch 2 Impact Indicator in the lower third of the package/pallet as close to the edge as possible. Avoid the center of the package because the mounting locations should be structurally sound.
- 2) If the package is twice as long as it is wide, use two ShockWatch 2 Impact Indicators. Place a second indicator in the same position on the opposite side of the package.



- 3) Place the Alert Sticker on your bill of lading as a reminder to receivers to check the ShockWatch 2 indicator immediately upon arrival.
- 4) While these instructions are considered best practices, each situation may be different. If you have any questions or would like to reorder, please contact your SpotSee Sales representative or **call (800) 527-9497 or +1 (214) 736-4580 or email: info@spotsee.io**
5. **To reorder, call (800) 846-2468 or email orders@spotsee.io**