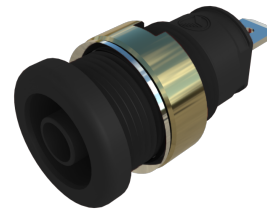

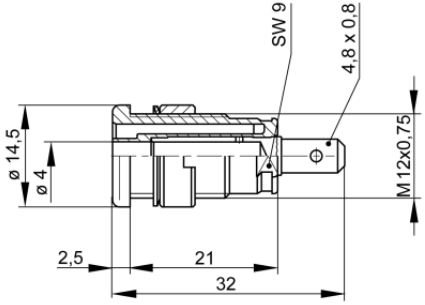


Sockets

SEB 2610 F4,8



| | |
|---|---|
| Product | SEB 2610 F4,8 |
| description | Safety built-in socket, 4 mm diameter, contact-protected, with 4.8 x 0.8 tab connector complying with DIN 46 244, gold-plated brass. For installation into switchpanels and equipment chassis with wall thicknesses up to 6 mm. Installation hole: 12.2 mm diameter, Tightening torque: 50 Ncm, Accessory: assembly tool MW SEB |
| operating instruction | BA451 |
| article-no. / *colour | 9723551xx  Au |
| drawing |  |
| technical data | |
| connection | flat connector 4.8 x 0.8 mm |
| rated voltage | AC/DC 1000 V |
| measurement cat. acc. to IEC 61010 | CAT III |
| rated current (consider derating curve) | 25 A |
| material socket | brass, gold plated |
| housing material | PA |
| temperature range acc. To IEC61010 ⁽¹⁾ | -40 °C to +80 °C |

4 mm safety system

| | |
|--|---------------|
| inflammability class acc. to UL 94 (only valid for basic material of housing) | V-2 |
| UL | cURus E537895 |

⁽¹⁾ contact the manufacturer for applications at deviating temperature ranges
stand: 14.08.2024

stand: 14.08.2024