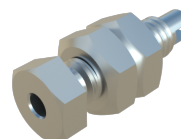
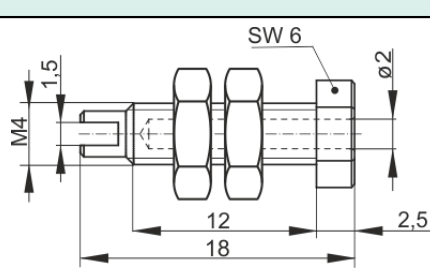


Sockets

MBU 10



Product	MBU 10
description	Unsprung 2 mm built-in socket, compatible with 2 mm spring-loaded plug. Suitable for installation in equipment chassis and switch panels up to a wall thickness of 6 mm.
operating instruction	BA205
Articlenummer	938441000 Ni
drawing	
	
technical data	
connection	M4 thread, solder connection
rated voltage	30 VAC / 60 VDC
measurement cat. acc. to IEC 61010	O ⁽²⁾
rated current (consider derating curve)	6 A
material socket	brass, nickel plated
temperature range acc. To IEC61010 ⁽¹⁾	-15 °C to +100 °C

⁽¹⁾ contact the manufacturer for applications at deviating temperature ranges

⁽²⁾ without rated measurement category, for other circuits that are not directly connected to mains

stand: 21.06.2022

stand: 21.06.2022