

RS-232/UART Protocol Triggering and Decode for Infiniium 9000 Series Oscilloscopes

Data sheet



This application is available in the following license variations.

- Order N5462B for a user-installed license
- Order Option 001 for a factory-installed license with new 9000 Series oscilloscopes
- Order N5435A Option 031 for a server-based license



Agilent Technologies

Easily debug and test designs that include RS-232/UART using your Infiniium 9000 scope

Lower-speed serial bus interfaces such as RS-232 and other UART (universal asynchronous receive and transmit) interfaces are widely used today in electronic designs. In many designs these serial buses tend to provide content-rich points for debug and test. However, since these protocols transfer bits serially, using a traditional oscilloscope has limitations. Manually converting captured 1's and 0's to protocol requires significant effort, can't be done in real-time, and includes potential for human error. In addition, traditional scope triggers are not sufficient for specifying protocol-level conditions.

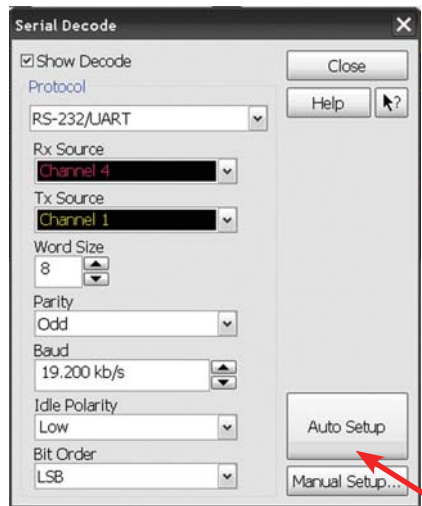
Extend your scope capability with Agilent's RS-232/UART Triggering and Decode application. This application makes it easy to debug and test designs that include RS-232/UART protocols using your Infiniium 9000 scope.

- Set up your scope to show RS-232/UART protocol decode in less than 30 seconds.
- Get access to a rich set of integrated protocol-level triggers.
- Save time and eliminate errors by viewing packets at the protocol level.
- Use time-correlated views to quickly troubleshoot serial protocol problems back to their timing or signal integrity root cause.



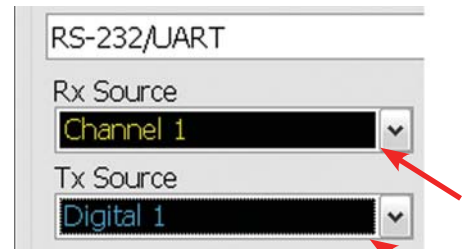
Easy to find

Turn decode on/off via the "Serial Decode" button on the front of the instrument or in the "Setup" menu. View decode embedded on the waveform display or in the protocol viewer listing window. (See pages 4-5).



30 Second RS-232/UART Setup

Configure your oscilloscope to display protocol decode in under 30 seconds. Use "Auto Setup" to automatically configure sample rate, memory depth and threshold and trigger levels.



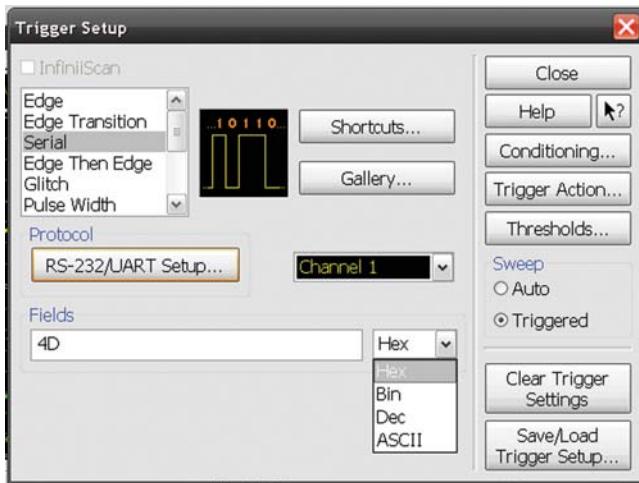
Support for both analog and digital channels

Acquire serial buses using any combination of scope or digital channels. Using digital channels on MSO models preserves analog channels for viewing other time-correlated signals.

RS-232/UART setup and triggering

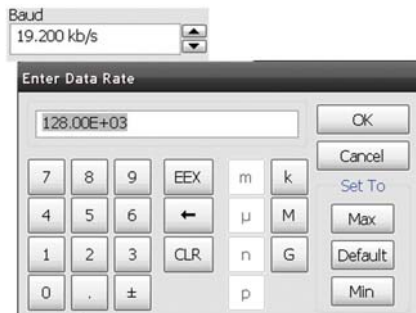
Get access to a rich set of integrated protocol level triggers. The application includes a suite of configurable protocol-level trigger conditions specific to RS-232/UART. When serial triggering is selected, the application enables special real-time triggering hardware inside the scope.

Hardware-based triggering ensures that the scope never misses a trigger event when armed. This hardware takes signals acquired using either scope or digital channels and reconstructs protocol frames. It then inspects these protocol frames against specified protocol-level trigger conditions and triggers when the condition is met.



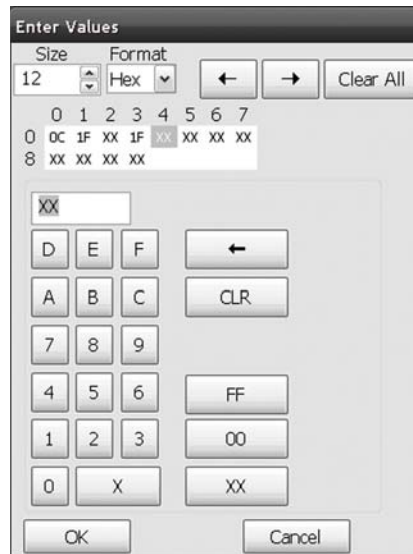
RS-232 Trigger Setup

Quickly access protocol triggering via the scope's trigger menu. Specify RS-232 trigger in HEX, binary decimal, or ASCII up to 27 words.



Baud rate settings

Enter any baud rate between 1,200 kb/s and 10 Mb/s, or click on up/down arrows to go to one of many pre-defined common baud rates.



Payload editor

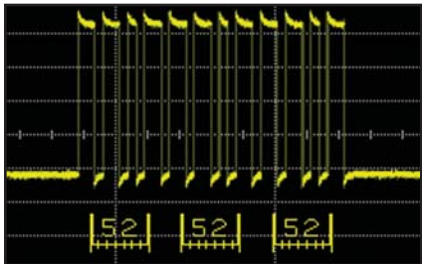
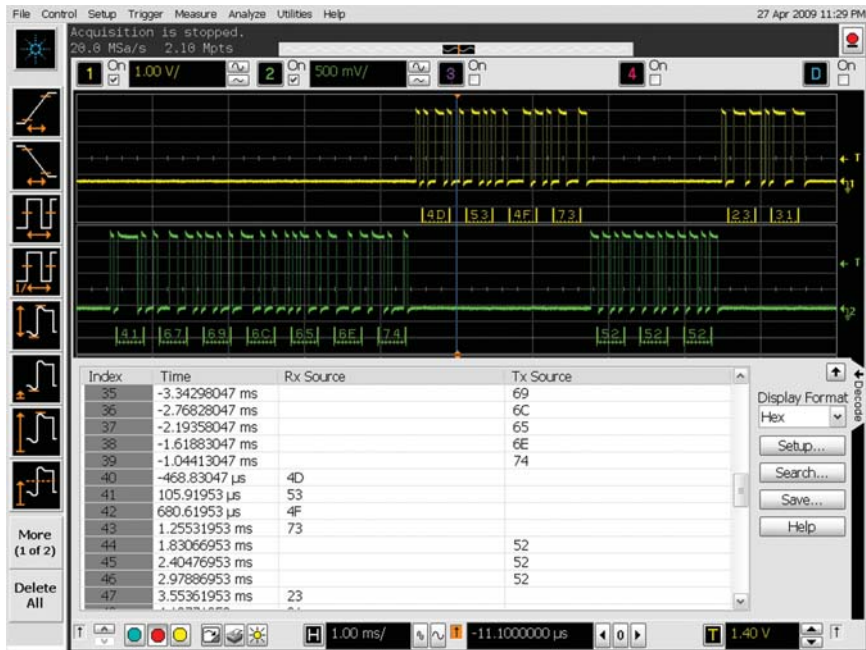
Choose trigger length between one to 27 words and use the payload editor to specify data values word by word.



Set trigger

Enter trigger condition in HEX, binary, decimal or ASCII.

RS-232/UART protocol decode and searching

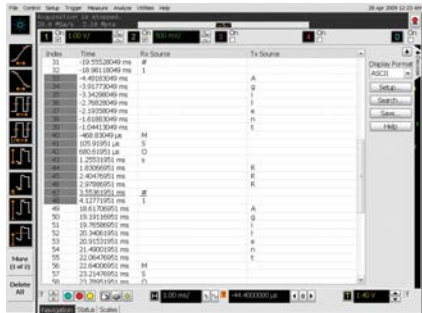


RS-232 decode embedded in waveform area

Utilize the oscilloscope waveform area to display decode information. Minor ticks indicate clock transitions and major ticks show the beginning and end of each word in the serial packet.

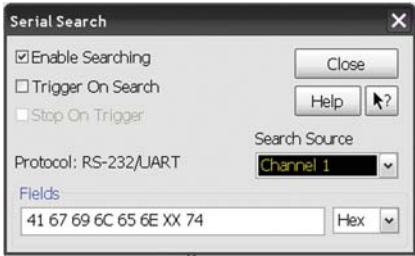
RS-232 protocol decode with precise time-correlation between waveforms and listing

Agilent's protocol viewer includes correlation between the waveforms and the selected packet. The selected packet, highlighted blue row in the listing, is time-correlated with the blue line in the waveform display. Move the blue tracking marker in time through waveforms and the blue bar will automatically track in the packets window. Or, scroll through the packet viewer and highlight a specific packet. The time-correlation tracking marker will move to the associated point in the waveform.



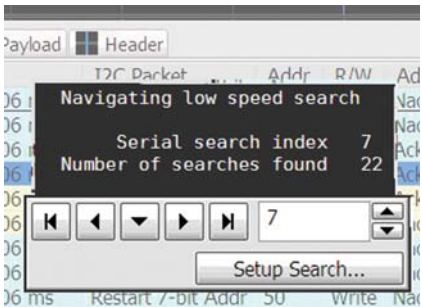
Full screen RS-232 listing

Fill the entire display with compact protocol information using the full screen listing. The protocol viewer window shows the index number, time stamp value, and data content for each serial packet in the list. Scroll through all decoded serial packets to find events of interest or errors in the transmission. Data in the listing window can be saved to a .csv or .txt file for off-line analysis or documentation.



Post-acquisition searching

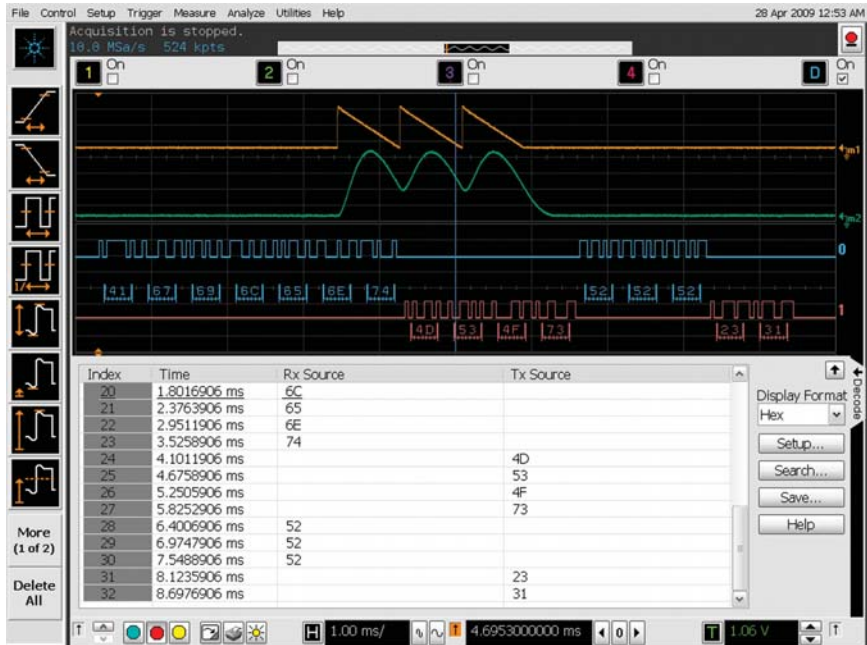
Search acquired protocol listings using a menu that is identical to the trigger menu.



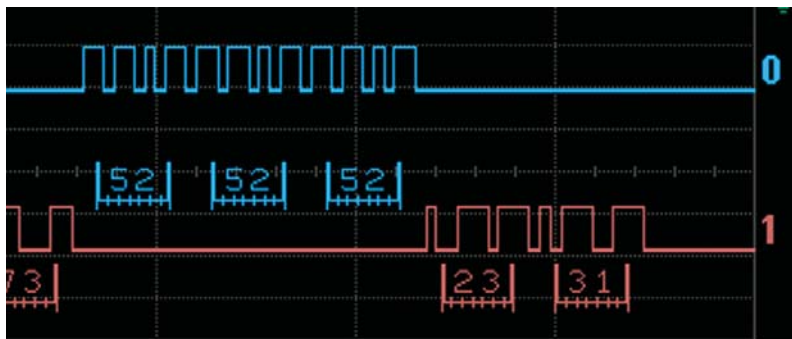
Quickly find occurrences

Quickly move to next occurrence of a specified event.

RS-232/UART protocol decode



Use digital channels on MSO models to preserve analog channels for simultaneously viewing other signals..



See RS-232 decode next to digital waveforms.



Use digital or analog for RS-232/UART triggering and decode.

RS-232/UART specifications and characteristics

UART protocols supported	RS-232 RS-422 up to 10 Mbps, differential probing recommended. RS-485 up to 10 Mbps, differential probing recommended. Other UART interfaces which admit to user-specified parameters available in the application. The application relies on probing and trigger/measurement thresholds to properly condition the signal for triggering and decode.
Tx and Rx source	Analog channels 1, 2, 3, or 4 MSO models can additionally use digital channels D0 to D15 Any waveform memory
Auto setup	Automatically configures trigger levels, measurement thresholds, memory depth, sample rate, trigger and holdoff for proper decode and triggering.
Decode word size	User-selectable: 5, 6, 7, 8, or 9 bits Parity: odd, even, none
Decode bit order	User-selectable: LSB or MSB
Supported baud rates	User selectable: 1.2 kb/s up to 10 Mb/s
Idle Polarity	User selectable: low or high
Triggering	User selectable: transmit or receive User selectable data length: 1 to 13 words (each word takes 2 trigger symbols) Word size selectable from 5 to 9 bits Polarity error Enter trigger in HEX, binary, decimal or ASCII Operators include =, not =, >, < and OR on each 8-bit word boundary

Ordering information

This application is compatible with all 9000 Series oscilloscope models.

Software applications	Factory-installed node-locked license for new scope purchases	User-installed node-locked licenser	Server-based license (N5435A option)
RS-232/UART triggering and decode	001	N5462B	031

Related literature

Publication title	Publication type	Publication number
Infiniium 9000 Series	Data Sheet	5990-3746EN

Agilent Email Updates

www.agilent.com/find/emailupdates

Get the latest information on the products and applications you select.

Agilent Direct

www.agilent.com/find/agilentdirect

Quickly choose and use your test equipment solutions with confidence.

Agilent Open

www.agilent.com/find/open

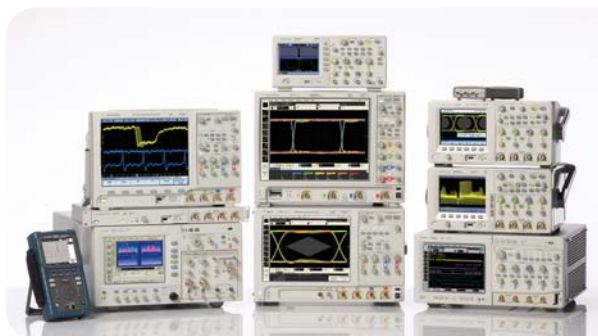
Agilent Open simplifies the process of connecting and programming test systems to help engineers design, validate and manufacture electronic products. Agilent offers open connectivity for a broad range of system-ready instruments, open industry software, PC-standard I/O and global support, which are combined to more easily integrate test system development.

LXI

www.lxistandard.org

LXI is the LAN-based successor to GPIB, providing faster, more efficient connectivity. Agilent is a founding member of the LXI consortium.

Windows® is a U.S. registered trademark of Microsoft Corporation.



Agilent Technologies Oscilloscopes

Multiple form factors from 20 MHz to >90 GHz | Industry leading specs | Powerful applications

Remove all doubt

Our repair and calibration services will get your equipment back to you, performing like new, when promised. You will get full value out of your Agilent equipment throughout its lifetime. Your equipment will be serviced by Agilent-trained technicians using the latest factory calibration procedures, automated repair diagnostics and genuine parts. You will always have the utmost confidence in your measurements.

Agilent offers a wide range of additional expert test and measurement services for your equipment, including initial start-up assistance onsite education and training, as well as design, system integration, and project management.

For more information on repair and calibration services, go to

www.agilent.com/find/removealldoubt

www.agilent.com

www.agilent.com/find/9000_RS-232

For more information on Agilent Technologies' products, applications or services, please contact your local Agilent office. The complete list is available at:

www.agilent.com/find/contactus

Americas

Canada	(877) 894-4414
Latin America	305 269 7500
United States	(800) 829-4444

Asia Pacific

Australia	1 800 629 485
China	800 810 0189
Hong Kong	800 938 693
India	1 800 112 929
Japan	0120 (421) 345
Korea	080 769 0800
Malaysia	1 800 888 848
Singapore	1 800 375 8100
Taiwan	0800 047 866
Thailand	1 800 226 008

Europe & Middle East

Austria	01 36027 71571
Belgium	32 (0) 2 404 93 40
Denmark	45 70 13 15 15
Finland	358 (0) 10 855 2100
France	0825 010 700
Germany	07031 464 6333
Ireland	1890 924 204
Israel	972-3-9288-504/544
Italy	39 02 92 60 8484
Netherlands	31 (0) 20 547 2111
Spain	34 (91) 631 3300
Sweden	0200-88 22 55
Switzerland	0800 80 53 53
United Kingdom	44 (0) 118 9276201

Other European Countries:

www.agilent.com/find/contactus

Revised: October 1, 2008

Product specifications and descriptions in this document subject to change without notice.

© Agilent Technologies, Inc. 2009
Printed in USA, June 1, 2009
5990-3923EN



Agilent Technologies