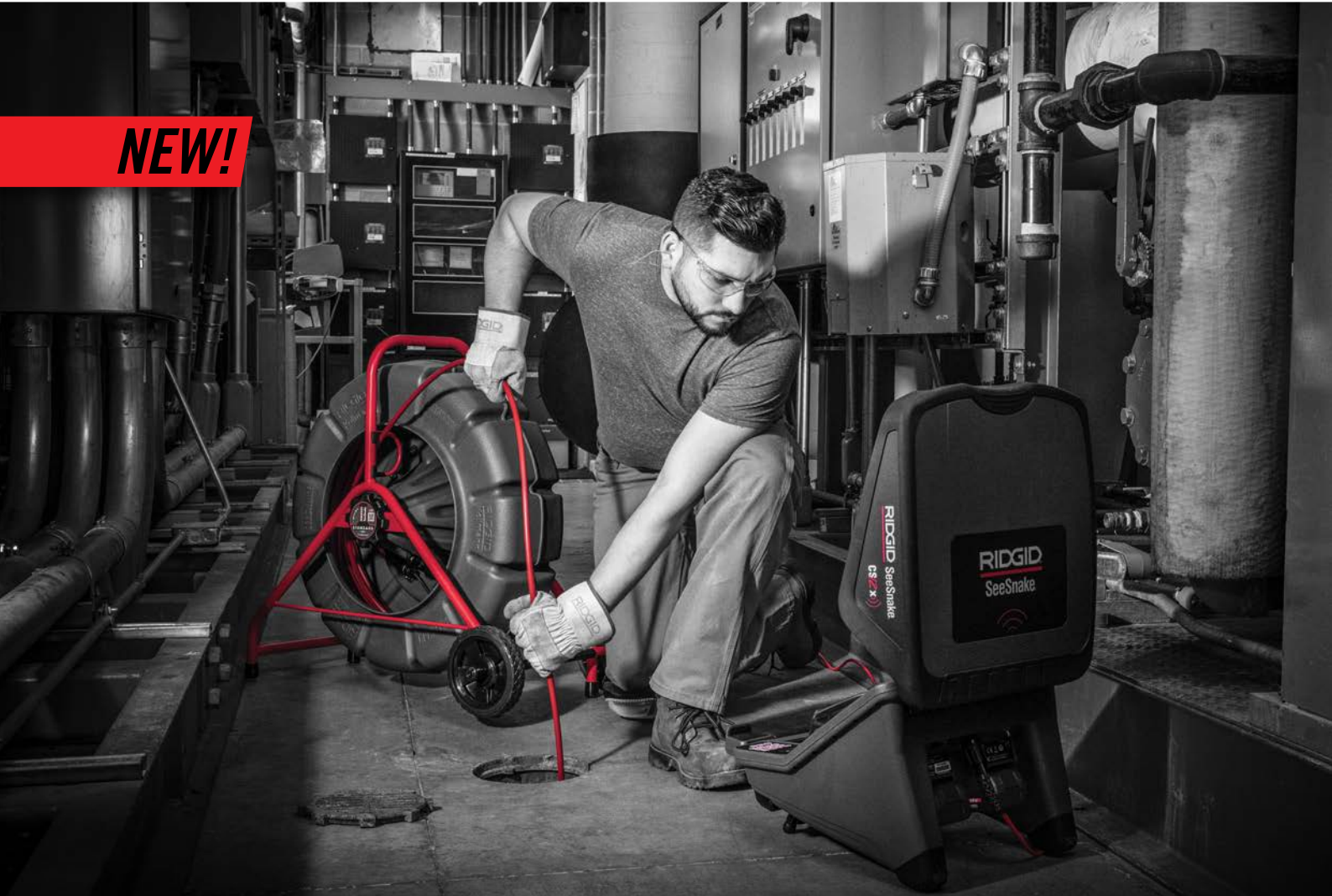


# SeeSnake® TruSense™ Technology

True Data Enabled Inspection Cameras

**RIDGID**

**NEW!**



**HDR**



SUPERIOR CLARITY AND DETAILS

**SeeSnake** TruSense™



CONSTANT INNOVATION

**TiltSense**™



THE DEGREE OF DIFFERENCE

## THE DIFFERENCE IS IN THE DETAILS

Introducing SeeSnake® cameras with TruSense™ technology that bring powerful data capability to plumbing diagnostics

# THE INDUSTRY'S BEST INSPECTION CAMERAS JUST GOT

## THE NEXT GENERATION INSPECTION CAMERAS

The SeeSnake Mini and Standard with TruSense provide down pipe visibility, vastly improved with **High Dynamic Range (HDR)**, giving more clearly defined details of the pipe characteristics. **TiltSense™** displays the camera's pitch in a pipe on a connected SeeSnake CSx series monitor helping you to diagnose even the most difficult inspections.

## RIDGID® SEESNAKE® MINI WITH TRUSENSE™

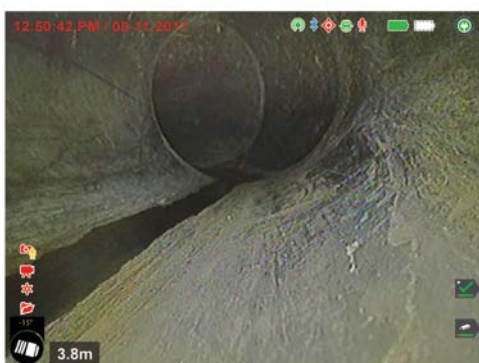
### INSPECT 40 TO 200 MM LINES UP TO 61 M

The Mini's moderately stiff 200' (61 m) push cable strikes a good balance between stiffness and the ability to navigate turns.

### DID YOU KNOW...



NON-HDR IMAGE



**HDR** IMAGE & TiltSense™

- The High Dynamic Range (HDR) image sensor can be toggled on/off on SeeSnake CSx monitors.
- HDR provides a better ratio on black, creating more contrast.
- The TiltSense icon on the CSx monitor changes color based on negative pitches (brown) and positive pitches (blue).
- Leverage the full potential of your TruSense™ enabled Reel and combine with a SeeSnake CSx monitor.



### SPECIFICATIONS:

	SEESNAKE MINI 63628
Camera Head	30 mm TruSense™ Self-Leveling
Light Source	High-Intensity LED
Push Cable Length	61 m (200')
Push Cable Diameter	9.1 mm (0.36")
Push Cable Minimum Bend Radius	76 mm (3")
Line Capacity	40 to 200 mm (1½" to 8")
512 Hz Sonde	High-power Flexmitter
Dimensions (L x W x H)	519 x 288 x 560 mm (20.4" x 11.3" x 22")
Weight (kg / lb)	11.8 kg (26 lb)
Operating Temperature	-10°C to 50°C
Storage Temperature	-10°C to 70°C
Ingress Protection (without Monitor)	IPx5

# RIDGID® SEESNAKE STANDARD WITH TRUSENSE™

## INSPECT 50 TO 300 MM LINES UP TO 99 M

The Standard has the stiffest push cable and is available in lengths up to 325' (99 m) – making it perfect for long runs, particularly in larger pipes with fewer turns.

▶ **TWO-WAY DATA COMMUNICATION LINK**

between the Camera and SeeSnake CSx series Wi-Fi enabled Monitors.

▶ **HIGH DYNAMIC RANGE (HDR) IMAGE SENSOR**

offers bright, clear in-pipe imaging in difficult lighting conditions.

▶ **TILTSENSE™**

displays the camera's pitch in a pipe on a connected CSx series monitor.

▶ **SELF-LEVELING CAMERA HEAD**

to keep the image upright.

▶ **RUGGED, HIGH-INTENSITY LEDS**

for exceptional viewing and long life.

▶ **POWERFUL FLEXMITTER® SONDE**

has long range and preserves the camera's ability to make turns.

▶ **A SET OF INCLUDED PIPE GUIDES**

center the camera for better in-pipe imaging.



### SEESNAKE INSPECTION TIPS & TRICKS:

SEESNAKE STANDARD	
63583	63603
35 mm TruSense™ Self-Leveling High-Intensity LED	
99 m (325')	61 m (200')
11.2 mm (0.44")	
114 mm (4.5")	
50 to 300 mm (2" to 12")	
High-power Flexmitter	
635 x 356 x 432 mm (25" x 14" x 17")	
24 kg (54 lb)	19 kg (42 lb)
-10°C to 50°C	
-10°C to 70°C	
IPx5	



**KEEP THE LENS CLEAR**



**USE PIPE GUIDES**



**USE EXTREME CARE AROUND SHARP EDGES**



**CAREFUL WHEN INSPECTING PORCELAIN APPLIANCES**



**USE A QUICK PUSH TO MOVE THE CAMERA**



**DO NOT USE MORE FORCE THAN IS NECESSARY**

# CONNECT THE FREE HQx MOBILE APP TO YOUR WI-FI CONNECTED MONITOR



- Stream live inspection video over Wi-Fi to a second screen
- Record and review footage, capture photos
- Create PhotoTalk™ media (still images with audio commentary)
- Share media with your customers straight from the app
- Manage jobs on the go to keep track of your inspection results
- Capture media from your device's front-facing and rear-facing cameras in addition to the CSx monitor display
- Remotely Control the Monitor from the App.
- Update your CSx Monitor's Software immediately through the App.



Free Download on  
Google Play & App Store



## ORDERING INFORMATION:

Catalog No.	Model No.	Description	Weight	
			lb	kg
63583	SeeSnake Standard	325' (99 m) Standard 35 mm SL TruSense	65	29.5
63603	SeeSnake Standard	200' (61 m) Standard 35 mm SL TruSense	55	25.0
63628	SeeSnake Mini	200' (61 m) Mini 30 mm SL TruSense	35	15.9

## SEESNAKE MINI ACCESSORIES:

Catalog No.	Description	Weight	
		lb	kg
67312	101 mm Star Guide, 30 mm Camera, Pkg of 20	0.66	0.30
95507	75 mm Star Guide, 30 mm Camera, Pkg of 6	0.18	0.08
97462	Pipe Guide, 30 mm Camera, Pkg of 6	0.44	0.20
93392	Guide Hoop, 30 mm Camera, Pkg of 4	0.04	0.02
17558	Spanner Wrench, 30 mm	0.04	0.02



Set of 35 mm Pipe Guides included with SeeSnake Standard reel

## SEESNAKE STANDARD ACCESSORIES:

Catalog No.	Description	Weight	
		lb	kg
64497	75 mm Star Guide, 35 mm Camera, Pkg of 20	0.77	0.35
97852	85 mm Pipe Guide, 35 mm Camera, Pkg of 10	0.77	0.35
64502	150 mm Pipe Guide, 35 mm Camera, Pkg of 10	0.66	0.30
97832	75 mm Roller Dolly, up to 6" PIPE	0.33	0.15
17563	Spanner Wrench, 35 mm	0.04	0.02
93387	Guide Hoop, 35 mm Camera, Pkg of 4	0.5	0.23



Set of 30 mm Pipe Guides included with SeeSnake Mini reel



Register your tool on  
RIDGID Link™ App

LET'S KEEP IN TOUCH • [RIDGID.EU/SIGNUP](http://RIDGID.EU/SIGNUP)



RIDGID® reserves the right to change design and specification of our products without notification or alteration of literature. For the complete selection of the Ridgid Tool product line, please refer to the RIDGID® Tool Catalog or [RIDGID.com](http://RIDGID.com).

© 2019, RIDGID, Inc. The Emerson logo and RIDGID logo are registered trademarks of Emerson Electric Co. or RIDGID, Inc. in the U.S. and other countries. All other trademarks belong to their respective holders.

## DISTRIBUTOR

# RIDGID

Ridge Tool UK  
c/o Emerson Electric UK Ltd, 2<sup>nd</sup> Floor Accurist House  
44 Baker Street, London, W1U 7AL

T: +44 (0) 808 238 9869 UK  
T: +353 1 800 936 397 Ireland

[RIDGID.gb@emerson.com](mailto:RIDGID.gb@emerson.com)  
[RIDGID.co.uk](http://RIDGID.co.uk)



# EMERSON