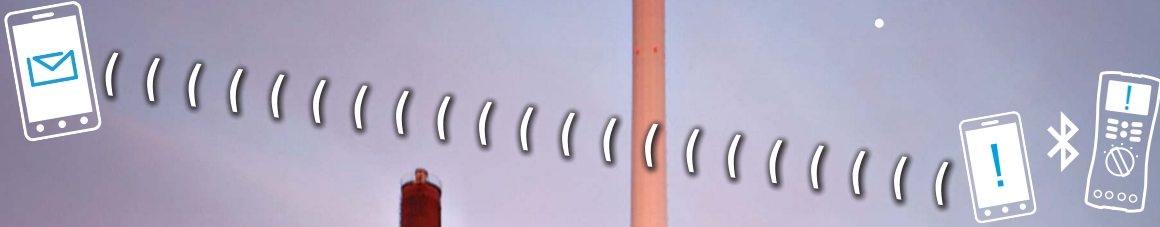


The Agilent Remote Link Solution



Anticipate — Accelerate — Achieve

Agilent Technologies

Why Go Wireless?



On site testing in large industrial sites can be challenging.



Machinery may be in operation.



Test points can be far apart, or high above the ground.

Have you ever wanted to carry out the tasks below with a handheld DMM but could not do so?

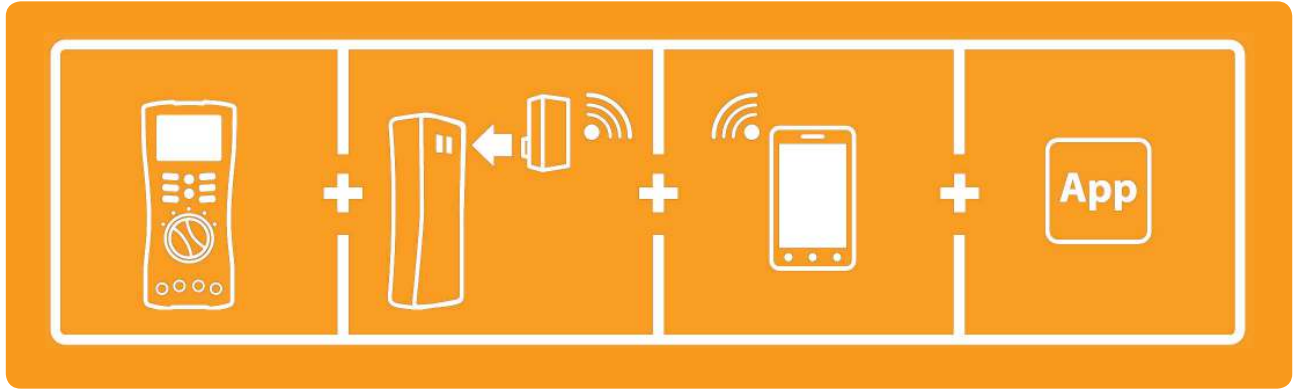
- Measure multiple points during troubleshooting and yet log all of the data simultaneously?
- Need to make measurements at electrical panels while toggling switches at the other end of the hall?
- Diagnose and evaluate live machinery from a safe distance?
- Monitor measurements in harsh environments?
- Log all of the data to diagnose intermittent issues from afar?

***All these are made possible
with the Agilent Remote Link Solution for
Agilent U1200 Series and Agilent U1450A/60A Series handheld meters***

Agilent lets you turn your iOS/Android smartphone or tablet into a remote measurement, control and reporting device.

The Remote Link Solution

Using *Bluetooth*[®] technology, the Agilent Remote Link Solution is comprised of the Agilent U1177A/U1117A Infrared (IR)-to-*Bluetooth* adapter, the Agilent U1115A remote logging display, compatible Agilent handheld meters and the iOS/Android applications, the Agilent Mobile Meter and Agilent Mobile Logger.



The core of the solution are the Agilent U1177A/U1117A IR-to-*Bluetooth* adapters, which are compact *Bluetooth* modules that plug into any compatible Agilent handheld meters. The IR-to-*Bluetooth* adapters allow you to safely measure, view and log test measurements from a distance of up to 10 meters (U1177A) or 100 meters (U1117A). The solution also allows users to log and monitor data on a variety of display devices, including iOS/Android smart devices, Windows PCs, or the new U1115A remote logging display.



The new Agilent U1115A remote logging display allows users to view readings of up to four handheld meters simultaneously. The remote logging display comes with 60,000 points of interval logging memory, letting users store more test data for future review or analysis.



The Hardware Setup

Making the hardware connection – it’s as easy as A-B-C

First, switch on the *Bluetooth* adapter and attach it to an Agilent handheld meter. For the U1240 Series, a separate U1179A IR bracket is needed before you can plug in the *Bluetooth* adapter.



The U1177A/U1117A *Bluetooth* adapter works with the Agilent U1200 Series handheld digital multimeters and clamp meters, and the U1450A/60A Series insulation resistance testers.



Each *Bluetooth* adapter has its own unique Media Access Control (MAC) address. Pair the Agilent handheld meter that has a *Bluetooth* adapter attached to it with an Android or iOS smart device. You can also view and log measurements wirelessly up to 100 meters on a dedicated remote logging display - U1115A. The wireless remote connectivity solution is now ready for your data monitoring and logging purposes.

Handheld meter models that are compatible with U1177A/U1117A and U1115A

	Handheld Digital Multimeter				Handheld clamp meter	Handheld insulation resistance tester
	U1230 Series	U1240 Series	U1250 Series	U1270 Series	U1210 Series	U1450A/60A Series
U1177A	■	■	■	■	■	■
U1117A	■	■*	■	■	■	■
U1115A	■	■	■	■	■	—

* needs a U1179A IR bracket - sold separately as an accessory

Connectivity distance (approximate) within the line-of-sight

	U1177A	U1117A	U1115A
U1177A	—	—	10-m
U1117A	—	—	100-m
U1115A	10-m	100-m	—
Other Class 1 devices	10-m	100-m	100-m
Other Class 2 devices	10-m	10-m	10-m

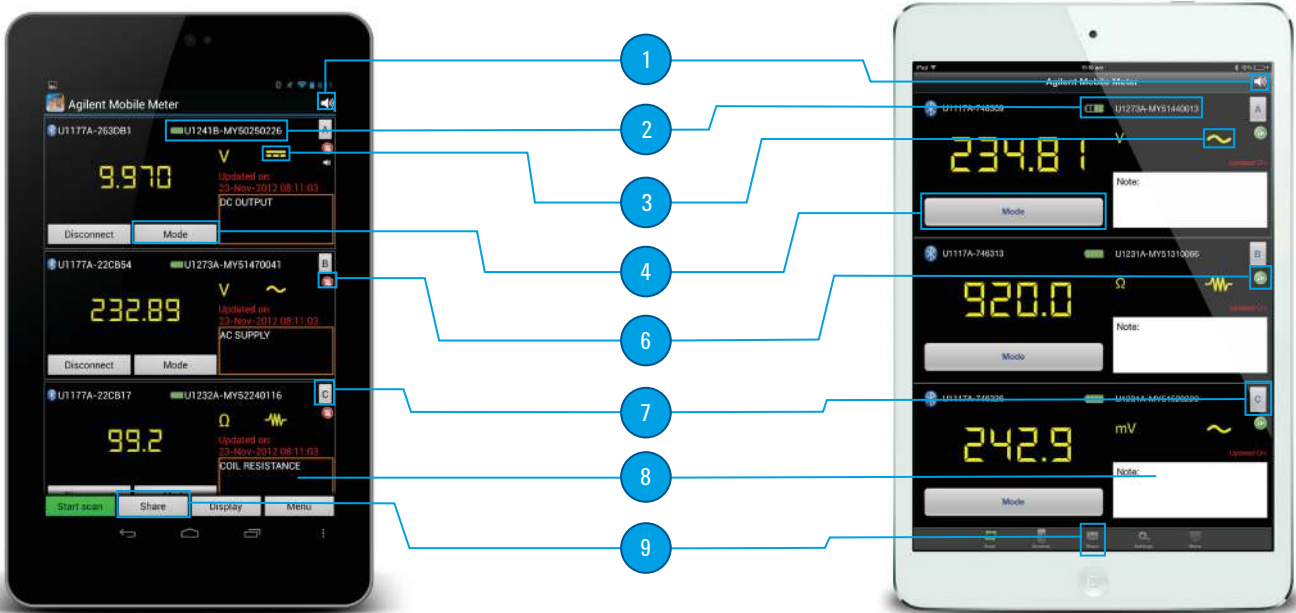
The Software Setup

The Agilent remote link solution comes with complimentary software applications, the Agilent Mobile Meter and Agilent Mobile Logger for iOS and Android smart devices.

First, download both applications from www.agilent.com/find/hhmeterapp or from the Google Play Store/Apple iTunes app store.

Agilent Mobile Meter Application (iOS/Android)

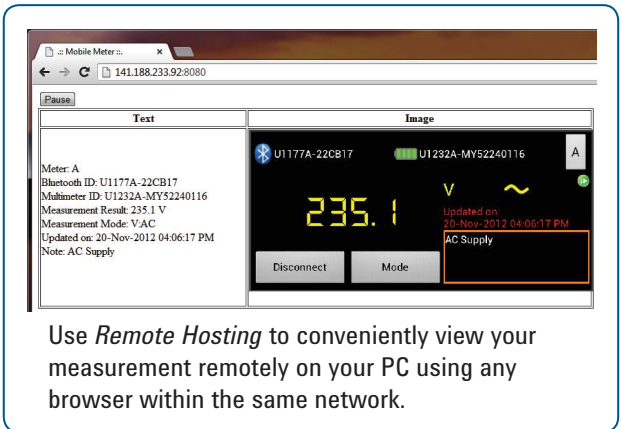
Monitor up to three measurements from three HH meters simultaneously



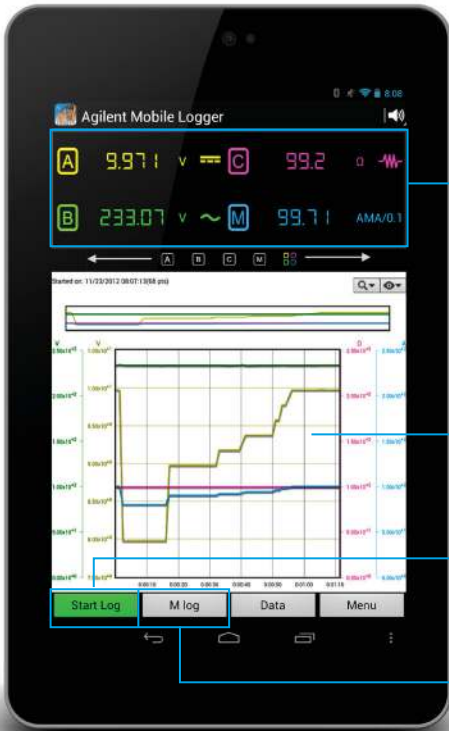
Android

iOS

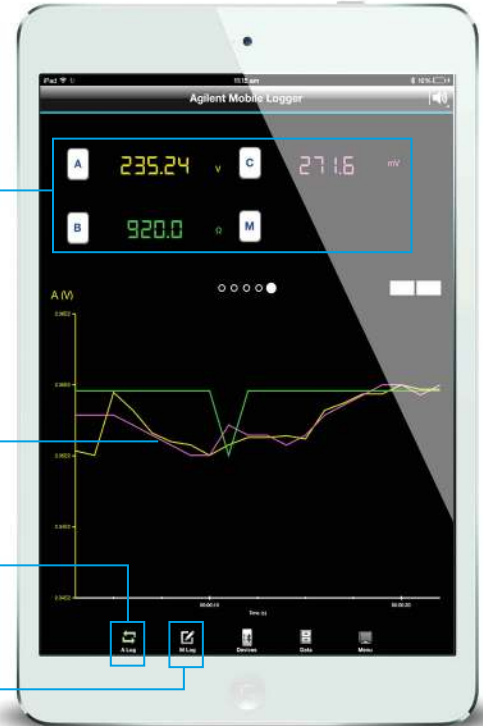
- 1) Use Voice-Out to have measurements read out so that you can fully concentrate on probing at the right points for greater safety
- 2) Shows the serial number of the connected multimeter and its battery status
- 3) Iconographic indicating the type of measurement function currently in use, replicating your DMM's display
- 4) Select desired type of measurement (voltage, current, resistance) and measure wirelessly from up to 10 meters away
- 5) Display measurements from up to three handheld meters
- 6) Freeze readings for your application/troubleshooting needs
- 7) Easily identify the HH DMM used for this measurement (Simply press the icon and the respective HH DMM will beep and the display of the HH DMM will blink)
- 8) Makes notes as you measure for your reference at a later time
- 9) Share data as text and/or a picture and send the file via email and sms



Agilent Mobile Logger Application (iOS/Android)

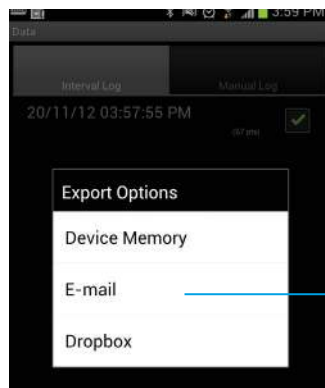


Android

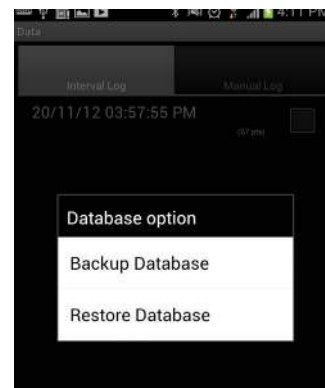


iOS

- 1) Monitor up to three measurements from three HH DMMs simultaneously
- 2) View real-time data trending for a particular HH DMM or the graphs for all three HH DMMs
- 3) Stop the data logging and zoom in on the trending graph to view details
- 4) Log data manually when the need arises

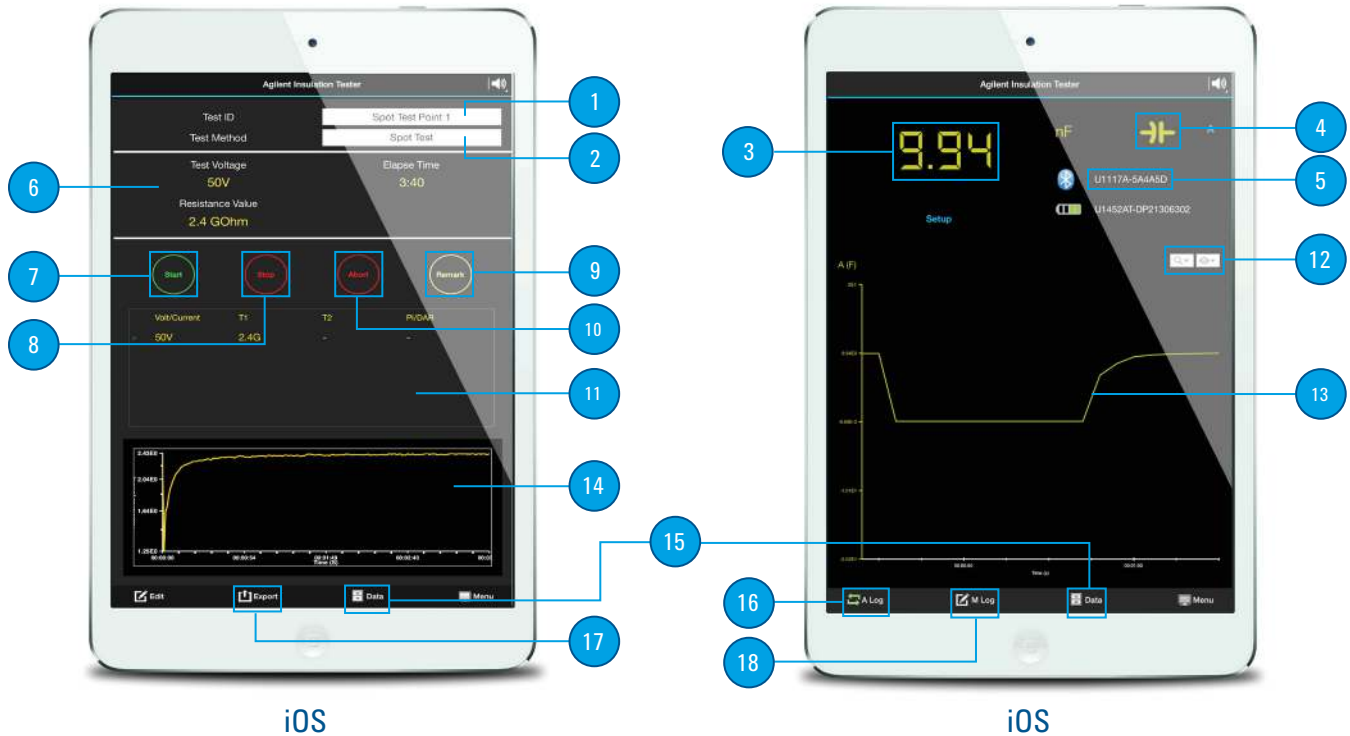


Easily export logged data as CSV files using email, or simply store it in your device's internal memory



Backup and restore database through your device's storage

Agilent Insulation Tester Application (iOS/Android)

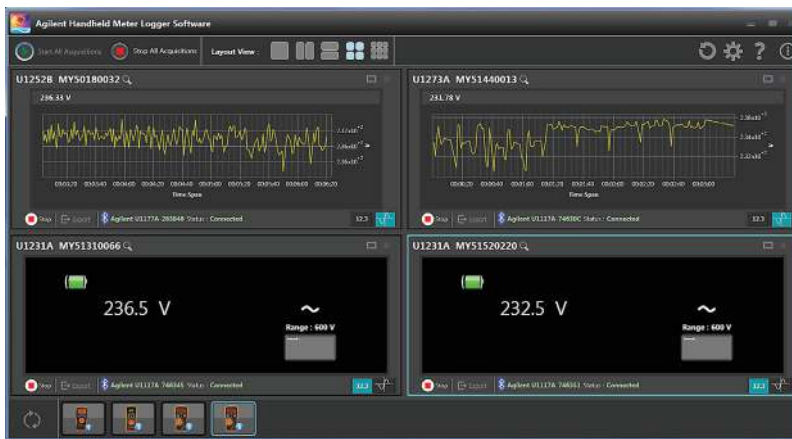


- 1) Enter a unique name or TestID for each test
- 2) Select type of test you want to perform, such as Spot test, Timed test, PI test, DAR test, Pass/Fail test, Earth Bond test and test data downloading from unit's memory
- 3) Primary measurement display
- 4) Measurement unit and function
- 5) Display the connected U1117A adapter
- 6) Properties View displays the test voltage, elapse time and resistance value
- 7) Start the insulation resistance testing
- 8) Stop the spot test
- 9) Enter remarks to the test report

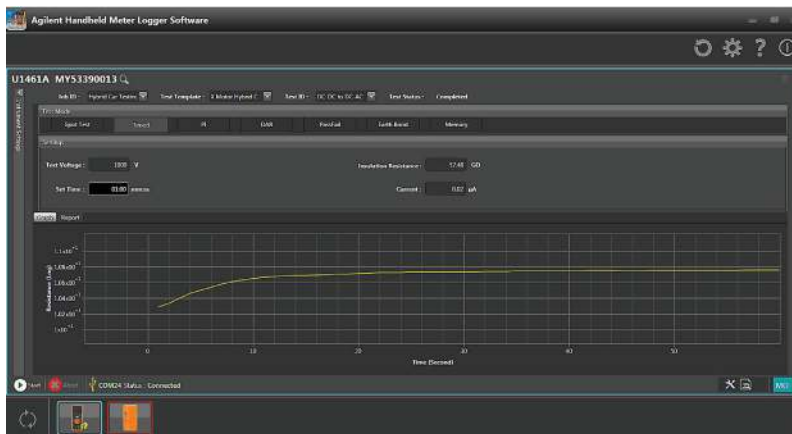
- 10) Abort all the insulation resistance testing
- 11) Display the insulation test data in the table format
- 12) Zoom and View softkeys, designed for graph control
- 13) Display the logged data in graph view for trending purposes
- 14) Plot the insulation test data in graphical view as test in progress
- 15) Display, edit, export, backup and delete the list of automatic data logging sessions or manually logged data
- 16) Start/stop automatic data logging
- 17) Generate and export test report in PDF format via email or Dropbox
- 18) Tap to initiate single point manual data logging

The Agilent Handheld Meter Logger Software for Personal Computer (PC) Users

Alternatively, data logging and monitoring activities can also be performed with Agilent Handheld Meter Logger software via *Bluetooth* connection.



View up to 10 handheld meters' readings or trending with Agilent Handheld Meter Logger



View insulation resistance test trends and generate test reports on a PC

Notes:

1. Tested on certain iOS/Android smart phones and tablets.
Please refer to www.agilent.com/find/U1117A for more information.
2. Measurement functions depend on the rotary position of the HH meter.
3. Number of HH meter connections depends on the smart phone/tablet used.

For more information, visit www.agilent.com/find/hhgowireless-br



myAgilent

www.agilent.com/find/myagilent

A personalized view into the information most relevant to you.



AdvancedTCA® Extensions for Instrumentation and Test (AXIe) is an open standard that extends the AdvancedTCA for general purpose and semiconductor test. Agilent is a founding member of the AXIe consortium.

www.axistandard.org



LAN eXtensions for Instruments puts the power of Ethernet and the Web inside your test systems. Agilent is a founding member of the LXI consortium.

www.pxista.org



PCI eXtensions for Instrumentation (PXI) modular instrumentation delivers a rugged, PC-based high-performance measurement and automation system.

www.agilent.com/quality



Agilent Electronic Measurement Group
DEKRA Certified ISO 9001:2008
Quality Management System

Agilent Channel Partners

www.agilent.com/find/channelpartners

Get the best of both worlds: Agilent's measurement expertise and product breadth, combined with channel partner convenience.

For more information on Agilent Technologies' products, applications or services, please contact your local Agilent office. The complete list is available at:
www.agilent.com/find/contactus

Americas

Canada	(877) 894 4414
Brazil	(11) 4197 3600
Mexico	01800 5064 800
United States	(800) 829 4444

Asia Pacific

Australia	1 800 629 485
China	800 810 0189
Hong Kong	800 938 693
India	1 800 112 929
Japan	0120 (421) 345
Korea	080 769 0800
Malaysia	1 800 888 848
Singapore	1 800 375 8100
Taiwan	0800 047 866
Other AP Countries	(65) 375 8100

Europe & Middle East

Belgium	32 (0) 2 404 93 40
Denmark	45 45 80 12 15
Finland	358 (0) 10 855 2100
France	0825 010 700* *0.125 €/minute
Germany	49 (0) 7031 464 6333
Ireland	1890 924 204
Israel	972-3-9288-504/544
Italy	39 02 92 60 8484
Netherlands	31 (0) 20 547 2111
Spain	34 (91) 631 3300
Sweden	0200-88 22 55
United Kingdom	44 (0) 118 927 6201

For other unlisted countries:

www.agilent.com/find/contactus

(BP-01-15-15)

Product specifications and descriptions in this document subject to change without notice.

Bluetooth and the Bluetooth logos are trademarks owned by Bluetooth SIG, Inc., U.S.A. and licensed to Agilent Technologies, Inc.

