

# Millenia™

## All Polymer Shelving

- ▶ **Transforming** the way you store and organize
- ▶ **Efficient, clean** long term solutions
- ▶ **Optimize space** quickly and efficiently





### ACCESSORIES

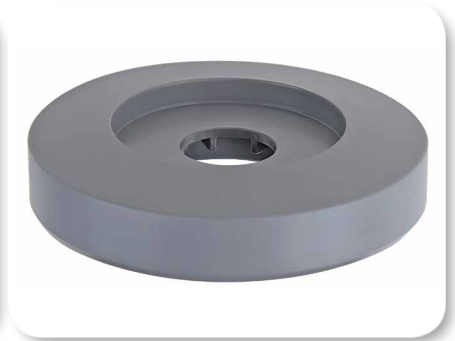
#### MOBILE APPLICATIONS



**MOBILE FLOOR AND OVERHEAD TRACK SYSTEMS**



**MOBILE KIT Model# QPPSC-5S**  
Includes four 5"x1-1/4" Polymer swivel casters, 2 with brake and four donut bumpers



**DONUT BUMPER**  
Non-marking rubber material used to protect walls and help cushion impact

#### WEIGHT SUPPORT

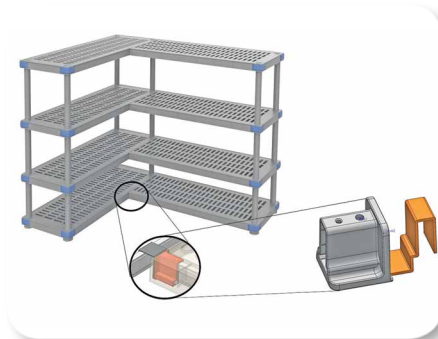


**DUNNAGE SUPPORT STAND**  
Allows for additional weight and stability  
\*Recommended for units with 54" and longer shelves



**WALL BRACKET**  
Used to hold a shelf unit from tipping over  
\*Recommended for stationary units only

#### ADD-ON UNIT CAPABILITY



**BEAM CONNECTOR ADAPTER**  
Used to connect multiple shelf units together  
\*Recommended for stationary units only

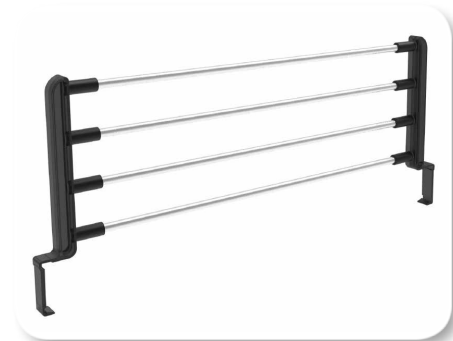


### ACCESSORIES

#### PRODUCT ORGANIZATION



**ADJUSTABLE HEIGHT  
SIDE AND BACK LEDGE**



**DIVIDERS  
7-7/8" Height**

#### DRYING CRADLES AND RACKS



**PRONGED DRYING CRADLE**  
Easily attaches to shelf frames.  
Perfect for dishes, drying cups, glassware, or trays.  
4" and 8" prong heights available.



**WAVED DRYING AND STORAGE CRADLE**  
Easily attaches to shelf frames.  
Perfect for drying dishes, and flat boards.



**PRONGED AND WAVED DRYING RACK  
COMPLETE UNITS**

#### LABEL HOLDERS

MODEL NO.	DIMENSIONS W"	SHIP WGT
<b>Millenia™ Label Holders</b>		
QPLH5C	5.5" Clear Label Holder	1 lb
QPLH17C	17.5" Clear Label Holder Fits 24" Shelf	1 lb
QPLH23C	23.5" Clear Label Holder Fits 30" Shelf	1 lb
QPLH29C	29.5" Clear Label Holder Fits 36" Shelf	1 lb
QPLH35C	35.5" Clear Label Holder Fits 42" Shelf	1 lb
QPLH41C	41.5" Clear Label Holder Fits 48" Shelf	1 lb
QPLH47C	47.5" Clear Label Holder Fits 54" Shelf	1 lb
QPLH53C	53.5" Clear Label Holder Fits 60" Shelf	1 lb
QPLH65C	65.5" Clear Label Holder Fits 72" Shelf	1 lb
<b>Millenia™ Laser and Inkjet Label Inserts</b>		
QPLHI-3	3" Inserts (8.5"x11" Sheets)	1 lb
QPLHI-5	5.5" Inserts (8.5"x11" Sheets)	1 lb



**CLEAR LABEL HOLDER WITH 3" INSERTS**