

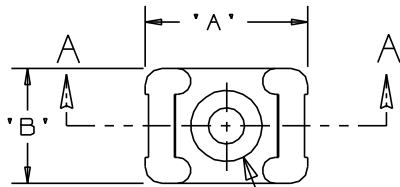
THIS COPY IS PROVIDED ON A RESTRICTED BASIS AND IS NOT TO BE USED IN ANY WAY DETRIMENTAL TO THE INTERESTS OF PANDUIT CORP.

PANDUIT PART NO.*	RECOMMENDED FASTENER	'A'	'B'	'C'	'D'	'E'	'F'	'G' REF'	'H' REF'	'I' REF'	USE WITH THESE CABLE TIE CROSS SECTIONS	WEIGHT (g) lbs/100 pcs.
TM3S8	#8 (M4) SCREW	0.863 (21.9)	0.610 (15.5)	0.373 (9.4)	0.320 (8.1) ±.020 (0.5)	0.088 (2.2) ±.020 (0.5)	0.208 (5.3)	0.105 (2.7)	0.325	0.180	MINIATURE INTERMEDIATE STANDARD LT. HEAVY	0.369 (167.5)
TM3S10	#10 (M5) SCREW							0.115 (2.9)				0.385
TM3S25	1/4" (M6) SCREW	0.879 (22.3)	0.629 (16.0)	0.379 (9.6)			0.210 (5.3)	0.155 (3.9)	0.506	0.262		0.296 (134.5)
TM3S2510	#10 (M5) SCREW	0.873 (22.2)	0.620 (15.7)				0.212 (5.4)	0.120 (3.0)	0.480	0.200		0.321 (145.5)

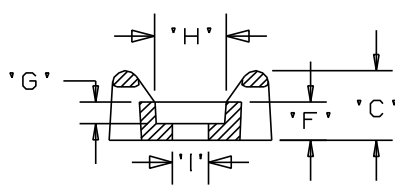
NOTES:

\*1. SEE [www.panduit.com](http://www.panduit.com) FOR CURRENT PART NUMBER SUFFIX DESIGNATION AND FOR PACKAGE SIZE AND PART COLOR. SEE [www.panduit.com](http://www.panduit.com) FOR TEFZEL, METAL DETECTABLE AND PEEK MOUNT DRAWINGS.

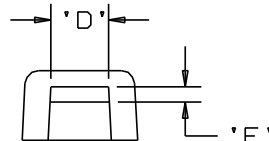
2. HOLE DIMENSIONS SHOULD ACCOMMODATE SPECIFIED RECOMMENDED FASTENER.



SEE NOTE 2



SECTION A - A



DIMENSIONS IN BRACKETS ARE METRIC [mm]

TITLE <b>TM3S - TIE MOUNT</b>		<b>PANDUIT</b>
CUSTOMER DRAWING		
ITEM REVISION NAME <b>10B015KD/00</b>	<b>MATERIAL:</b>  SEE NOTE 1	
DATASET FILE NAME <b>10B015KD_DC/00 - GB0239EN_REV12</b>		
UNLESS OTHERWISE SPECIFIED, DIMENSIONAL TOLERANCES ARE: IN [mm]		<b>DRAWING NUMBER:</b> <b>GB0239EN</b>
.x ± .1 [2.54]      .xxx ± .005 [0.127] .xx ± .01 [0.25]      ANGLES ± 5°		
THIRD ANGLE PROJECTION		<b>SCALE</b> NONE
DRAWN BY AJV		
DATE 12/17/96	CHK	SIZE A
SHT 1 OF 1		

D101000A/16

REV	DATE	BY	CHK	APR	DESCRIPTION	ECN
12	6/27/13	BWG	JADE	RTFI	REVISED CHART AND NOTE 1. SEE ECN FOR FULL DETAILS.	GB0239EN/12