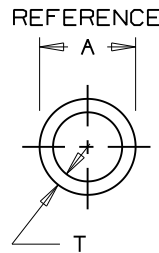
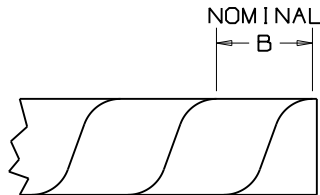


*PANDUIT PART NUMBER	A IN (mm)	B IN (mm)	T IN (mm)	WEIGHT LBS (g) / 100 FT
T12F	.125 (3.2)	.218±.047 (5.5±1.2)	.030±.006 (0.8±0.2)	0.4 (181.4)
T19F	.188 (4.8)	.250±.047 (6.4±1.2)	.035±.008 (0.9±0.2)	0.6 (270.1)
T25F	.250 (6.4)	.375±.047 (9.5±1.2)	.040±.008 (1.0±0.2)	1.1 (498.9)
T38F	.375 (9.5)	.437±.047 (11.1±1.2)	.055±.010 (1.4±0.3)	2.2 (997.9)
T50F	.500 (12.7)	.500±.047 (12.7±1.2)	.060±.016 (1.5±0.4)	3.3 (1496.8)
T62F	.625 (15.9)	.625±.047 (15.9±1.2)	.062±.020 (1.6±0.5)	4.4 (1995.8)
T75F	.750 (19.1)	.875±.047 (22.2±1.2)	.065±.020 (1.7±0.5)	5.6 (2539.6)
T100F	1.000 (25.4)	1.125±.047 (28.6±1.2)	.070±.020 (1.8±0.5)	8.2 (3718.7)



- NOTES:
- *1) See current price sheet for part number suffix designations, package size and part color.
 - 2) For roll sizes larger than 10 ft., splicing may occur.
 - 3) Reverse Cut.

DIMENSIONS IN PARENTHESES ARE IN METRIC UNITS
 CAD FILENAME/LAYERS G03597B1_DC-G00239D1_PB-NATPOLYWRAP_03

PANDUIT CORP. TINLEY PARK, ILLINOIS

(B) SPIRAL WRAP (CUSTOMER DRAWING)

UNLESS OTHERWISE SPECIFIED, DIMENSIONAL TOLERANCES ARE:
 (.X) ± ---- (.XXX) ± ----
 (.XX) ± ---- ANGLES ± ----
 UNLESS OTHERWISE SPECIFIED, ALL DIMENSIONS ARE GIVEN IN INCHES, THIRD ANGLE PROJECTION.

REV	DATE	BY	CHK	DESCRIPTION	ECN	R	CUST	SUP	DRAWN BY	MAT'L	SCALE	DRAWING NO.	DWG SIZE
4	5-23-11	LEF	VJS	(B) REMOVED "NATURAL" FROM DESCRIPTION	GB0239D1	4	RAMI		CJG	POLYETHYLENE	NONE	GB0239D1	A
3	5-9-11	LEF	VJS	(A) ADDED NOTE 3 REMOVED PHONE NUMBER FROM NOTE 2	GB0239D1	3	RAMI		CJG	POLYETHYLENE	NONE	GB0239D1	A
2	6-23-97	JAD		ADDED NOTE 2	GB0239D1	2			CJG	POLYETHYLENE	NONE	GB0239D1	A
1	1/20/97	RJK		ADDED T19F TO DRAWING	GB0239D1	1			CJG	POLYETHYLENE	NONE	GB0239D1	A
R	6/5/96	CJG		INITIAL RELEASE	GB0239D1	R			CJG	POLYETHYLENE	NONE	GB0239D1	A
									DATE				
									CHK'D				
									JVL				