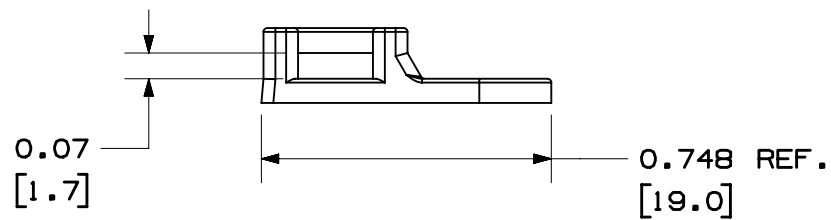
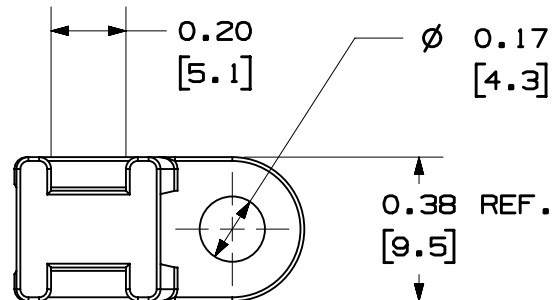


2

1

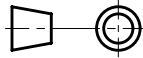
THIS COPY IS PROVIDED ON A RESTRICTED BASIS AND IS NOT TO BE USED IN ANY WAY DETRIMENTAL TO THE INTERESTS OF PANDUIT CORP.

PANDUIT PART NUMBER	RECOMMENDED FASTENER
SSMTA	#8 [ M4 ] SCREW



**NOTE:**

- SEE [WWW.PANDUIT.COM](http://WWW.PANDUIT.COM) FOR PART NUMBER SUFFIX DESIGNATION FOR PACKAGE SIZE, PART MATERIAL, PART COLOR AND THIRD PARTY RECOGNITION OR COMPLIANCE.
- DIMENSIONAL TOLERANCES ARE: IN [ mm ]  
 .x ± 0.05 [ 1.3 ]  
 .xx ± 0.02 [ 0.5 ]  
 .xxx ± 0.010 [ 0.25 ]  
 ANGLES ±5°

PART NUMBER		SSMTA	
TITLE			
STRONGHOLD ANCHOR MOUNTS SCREW APPLIED			
CUSTOMER DRAWING			
ITEM REVISION NAME		00586EBH/00	
DATASET FILE NAME		00586EBH_DC/00A	
		THIRD ANGLE PROJECTION	
MATERIAL		NYLON 6/6	
DRAWING NUMBER		00586EBH_DC	
DRAWN BY	DATE	CHK	SCALE
JBN	02-03-20	BMAG	NONE
SHEET 1 OF 1			SIZE
			A

00A	03-10-20	JBN	BMAG	RGB JHAC	RELEASE	077323
REV	DATE	BY	CHK	APR	DESCRIPTION	ECN

2

1

B

A



B

A



A-SIZE CUSTOMER