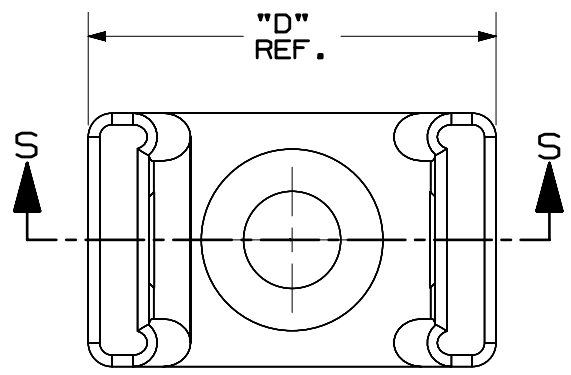


2

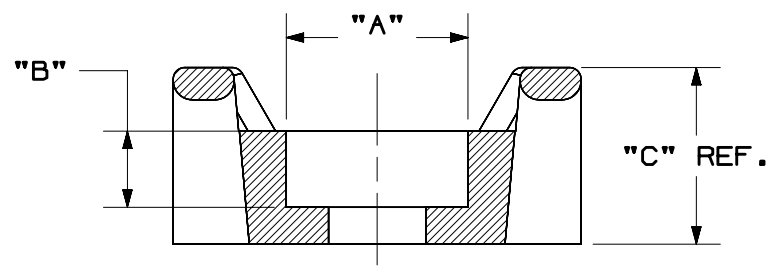
1

THIS COPY IS PROVIDED ON A RESTRICTED BASIS AND IS NOT TO BE USED IN ANY WAY DETRIMENTAL TO THE INTERESTS OF PANDUIT CORP.

PANDUIT PART NUMBER	RECOMMENDED FASTENER	"A" IN. [mm]	"B" IN. [mm]	"C" REF. IN. [mm]	"D" REF. IN. [mm]
SSM2S6	#6 [M3] SCREW	0.270-0.290 [6.86-7.37]	0.092 [2.34]	0.265-0.285 [6.73-7.24]	0.620-0.640 [15.75-16.26]
SSM3S8	#8 [M4] SCREW	0.305-0.330 [7.75-8.38]	0.105 [2.67]	0.363-0.383 [9.22-9.73]	0.853-0.873 [21.67-22.17]



NOTE:
 1. SEE WWW.PANDUIT.COM FOR PART NUMBER SUFFIX DESIGNATION FOR PACKAGE SIZE, PART MATERIAL, PART COLOR AND THIRD PARTY RECOGNITION OR COMPLIANCE.
 2. HOLE DIMENSIONS SHOULD ACCOMMODATE SPECIFIED RECOMMENDED FASTENER.
 3. DIMENSIONAL TOLERANCES ARE: IN [mm]
 .x ± 0.05 [1.3]
 .xx ± 0.02 [0.5]
 .xxx ± 0.010 [0.25]
 ANGLES ±5°



SECTION S-S

PART NUMBER		SEE TABLE	
TITLE			
STRONGHOLD MOUNTS SCREW APPLIED			
CUSTOMER DRAWING			
ITEM REVISION NAME		00586EBE/00	
DATASET FILE NAME		00586EBE_DC/00A	
		THIRD ANGLE PROJECTION	
MATERIAL		NYLON 6/6	
DRAWING NUMBER		00586EBE_DC	
00A	03-10-20	JBN	BMAG
REV	DATE	BY	CHK
			APR
DESCRIPTION		ECN	
RELEASED		076846	
DRAWN BY		DATE	
JBN		01-31-20	
CHK		SCALE	
BMAG		NONE	
SHEET 1 OF 1		SIZE	
A		A	

2

1

A-SIZE CUSTOMER

B

B

A

A