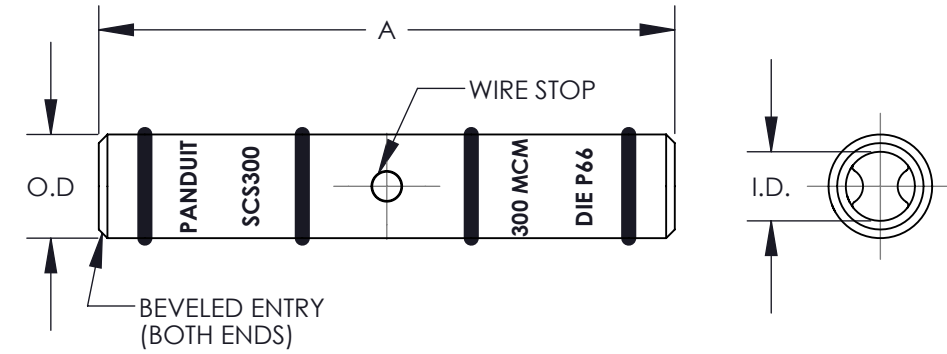


THIS COPY IS PROVIDED ON A RESTRICTED BASIS AND IS NOT TO BE USED IN ANY WAY DETRIMENTAL TO THE INTERESTS OF PANDUIT CORP.

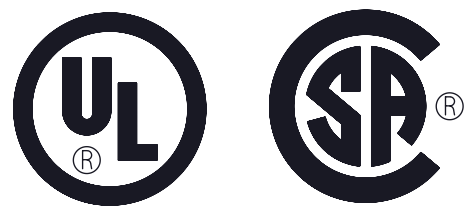
PANDUIT PART NUMBER	COPPER CONDUCTOR SIZE	EXPANDED WIRE RANGE***	BARREL		OVERALL LENGTH "A" +/- .12	WIRE STRIP LENGTH	PANDUIT CRIMP TOOL PART NUMBERS					
			I.D. +/- .01	O.D. +/- .01			CT-700 (OBSOLETE)	CT-1700	CT-720	CT-920, CT-920CH, CT-930, CT-930CH, CT-940CH* CT-2920 CT-2940*	CT-980 CT-980CH CT-2950 CT-2980	CT-2001
SCS8-L	#8 AWG	---	0.18	0.27	1.50	11/16	CD-700-8-2 RED P21 2 CRIMPS	RED P21 2 CRIMPS	CD-720-1 RED P21 1 CRIMP	CD-920-8 RED P21 1 CRIMP	---	CD-2001-8 RED P21 1 CRIMP
SCS6-L	#6 AWG	---	0.22	0.31	1.75	13/16	CD-700-8-2 BLUE P24 2 CRIMPS	BLUE P24 2 CRIMPS	CD-720-1 BLUE P24 1 CRIMP	CD-920-6 BLUE P24 1 CRIMP	---	CD-2001-6 BLUE P24 1 CRIMP
SCS4-L	#4 AWG, #3 AWG, #2 SOL	---	0.28	0.38	1.75	13/16	CD-700-8-2 GRAY P29 2 CRIMPS	GRAY P29 2 CRIMPS	CD-720-1 GRAY P29 1 CRIMP	CD-920-4 GRAY P29 1 CRIMP	STD 1 CRIMP	CD-2001-4 GRAY P29 1 CRIMP
SCS2-Q	#2 AWG	#6-#2 STR AWG	0.31	0.42	1.87	7/8	CD-700-8-2 BROWN P33 3 CRIMPS	BROWN P33 3 CRIMPS	CD-720-1 BROWN P33 1 CRIMP	CD-920-2 BROWN P33 1 CRIMP	STD 1 CRIMP	CD-2001-2 BROWN P33 1 CRIMP
SCS1-E	#1 AWG	#6-#1 STR AWG	0.36	0.47	1.87	7/8	CD-700-1-1/0 GREEN P37 3 CRIMPS	GREEN P37 3 CRIMPS	CD-720-2 GREEN P37 1 CRIMP	CD-920-1 GREEN P37 1 CRIMP	STD 1 CRIMP	CD-2001-1 GREEN P37 1 CRIMP
SCS1/0-X	1/0 AWG	#6-#1/0 STR AWG	0.39	0.52	1.87	7/8	CD-700-1-1/0 PINK P42 3 CRIMPS	---	CD-720-2 PINK P42 1 CRIMP	CD-920-1/0 PINK P42 1 CRIMP	STD 1 CRIMP	CD-2001-1/0 PINK P42 1 CRIMP
SCS2/0-X	2/0 AWG	#4-#2/0 STR AWG	0.45	0.58	2.00	15/16	---	---	CD-720-2 BLACK P45 2 CRIMPS	CD-920-2/0 BLACK P45 1 CRIMP	STD 1 CRIMP	CD-2001-2/0 BLACK P45 2 CRIMPS
SCS3/0-X	3/0 AWG	#2-#3/0 STR AWG	0.51	0.64	2.12	1	---	---	CD-720-2 ORANGE P50 2 CRIMPS	CD-920-3/0 ORANGE P50 1 CRIMP	STD 1 CRIMP	CD-2001-3/0 ORANGE P50 2 CRIMPS
SCS4/0-X	4/0 AWG	#1-#4/0 STR AWG	0.57	0.71	2.12	1	---	---	CD-720-3 PURPLE P54 2 CRIMPS	CD-920-4/0 PURPLE P54 1 CRIMP	STD 1 CRIMP	CD-2001-4/0 PURPLE P54 2 CRIMPS
SCS250-X	250 kcmil	1/0-250 kcmil	0.63	0.77	2.25	1-1/16	---	---	CD-720-3 YELLOW P62 2 CRIMPS	CD-920-250 YELLOW P62 1 CRIMP	STD 1 CRIMP	CD-2001-250 YELLOW P62 2 CRIMPS
SCS250UP-X												



NOTES:

1. MATERIAL: HIGH CONDUCTIVITY SEAMLESS COPPER TUBING
2. ELECTRO TIN PLATED
NOTE: SCS250UP IS NOT PLATED
3. BARREL COLOR CODED WITH DIE SET INDEX NUMBER
NOTE: PLATED PARTS ONLY
4. UL LISTED WITH CODE COPPER CONDUCTORS FOR APPLICATIONS UP TO 35KV, FILE E52164
5. CONSULT CABLE MANUFACTURER FOR VOLTAGE STREE RELIEF INSTRUCTIONS WITH APPLICATIONS GREATER THAN 2000 VOLTS
6. CSA CERTIFIED FOR APPLICATIONS UP TO 600V, FILE LR31212
7. FOR USE WITH COPPER CABLES ONLY

* CD-920 DIES CAN BE USED WITH CT-940CH AND CT-2940 TOOL WITH CD-940-DA DIE ADAPTER
** WITH CT-980, CT-980CH, CT-2950 7 CT-2980



05	8/11	JHNU	RGB	ADDED SC2350UP CONVERTED DWG TO SOLIDWORKS	N41061BA-C41061	RGB	RGB	
04	2/03	SAC		EXPANDED WIRE RANGE FOR SCS4, REMOVED NAVY NO'S UPDATED SCS250 MCM TO kcmil				
03	4/01	TC	SKB	ADDED: LETTER P TO DIE NO'S & CD-920 DIE NOTE; TOOL CT-940CH, CT-2920, CT-2940, CT-2950, CT-2980; UL & CSA LOGOS, EXPANDED WIRE RANGE AND NOTE REVISED: CRIMP QTY'S REMOVED: ALTERNATE DIE INDEX NO'S, & NOTE: FLEX & WELD COND. SIZES	09358	JAC	LM	SCS STANDARD BARREL #8-#250 SPLICES CUSTOMER DRAWING UNLESS OTHERWISE SPECIFIED DIMENSIONAL TOLERANCES ARE: (.X) ± (.XXX) ± (.XX) ± ANGLES ±
02	1/93	WL	GRM	REVISED NOTES/ ADDED TOLERANCES & CT-980,CT-980CH	01369	RJM	RM	
01	12/92	WL	GRM	ADDED CT-2001	00980	RJM	RS	DRAWN BY WL DATE 5/92 SCALE NONE
00	5/92	WL	GRM	DRAWING RELEASED	00980		RS	DRAWING NO / CAD FILE C41061_05
REV	DATE	BY	CHK	DESCRIPTION	ECN	-R	SUP	DWG B SIZE