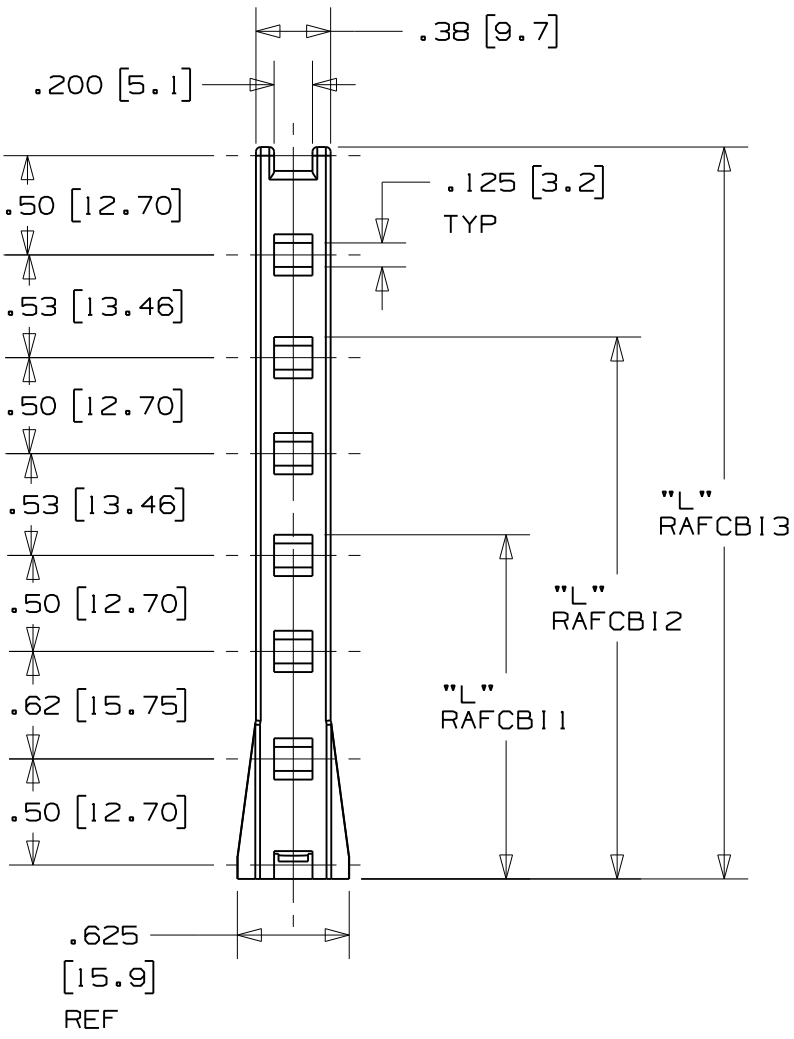
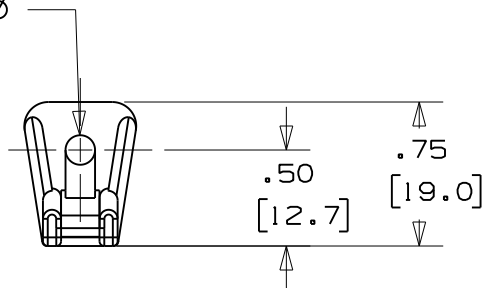
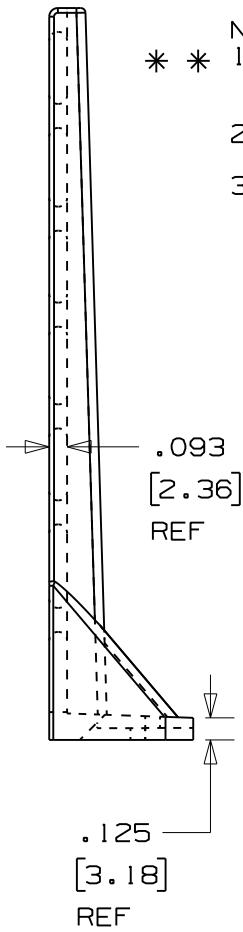


THIS COPY IS PROVIDED ON A RESTRICTED BASIS AND IS NOT TO BE USED IN ANY WAY DETRIMENTAL TO THE INTERESTS OF PANDUIT CORP.

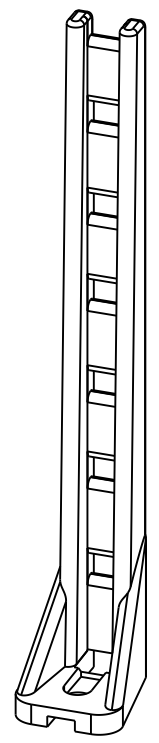
.145 ± .007 ∅  
[3.7 ± 0.18]



PANDUIT PART NO. **	'L' in / (mm)	RECOM'D FASTNER	WEIGHT lbs 100 (g) pcs
RAFCB11-S6	1.75 (44.4)	#6 (M3)	0.64 (292)
RAFCB12-S6	2.78 (70.6)		0.87 (394)
RAFCB13-S6	3.81 (96.8)		1.06 (479)



- NOTES:
- \* \* 1. SEE CURRENT PRICE SHEET FOR PART NUMBER SUFFIX DESIGNATION FOR PACKAGE SIZE.
  - 2. MATERIAL: 6/6 NYLON  
COLOR: BLACK
  - 3. USE THE FOLLOWING CABLE TIES WITH ANY OF THESE PRODUCTS:  
M=MINATURE, I=INTERMEDIATE, S=STANDARD



DIMENSIONS IN BRACKETS ARE METRIC [ mm ]

CAD FILENAME/LAYERS G00239FZ\_PB\_RAFCB1\_00

**PANDUIT** CORP. TINLEY PARK, ILLINOIS

RIGHT ANGLE FLAT CABLE BASE

UNLESS OTHERWISE SPECIFIED, DIMENSIONAL TOLERANCES ARE: (.X) ±0.05 (1.31) (.XXX) ±0.010 (0.25) (.XX) ±0.02 (0.5) ANGLES ± 5°	UNLESS OTHERWISE SPECIFIED, ALL DIMENSIONS ARE GIVEN IN INCHES, THIRD ANGLE PROJECTION.
DRAWN BY JAD	MAT'L:
DATE 1/15/04	SEE NOTE 2
SCALE NONE	DRAWING NO. GB0239KZ
CHK'D	DWG SIZE A

R	1/15/04	JAD		INITIAL RELEASE	GB0239KZ	R			
REV	DATE	BY	CHK	DESCRIPTION	ECN	R	CUST	SUP	