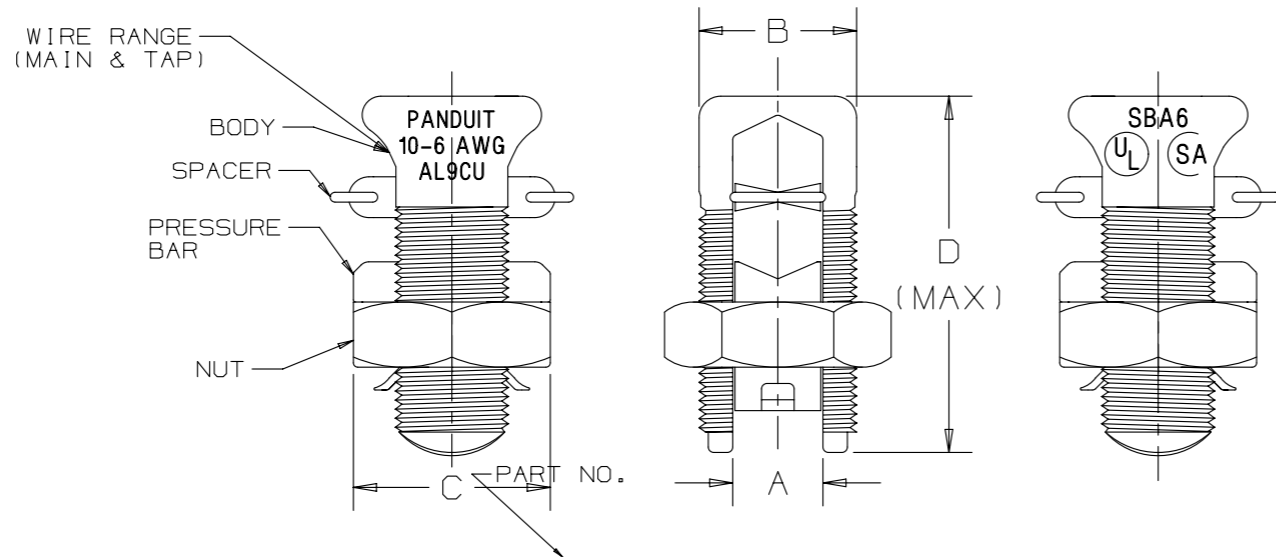


THIS COPY IS PROVIDED ON A RESTRICTED BASIS AND IS NOT TO BE USED IN ANY WAY DETRIMENTAL TO THE INTERESTS OF PANDUIT CORP.

PART NUMBER	WIDTH "A"	BODY WIDTH "B"	NUT HEX "C"	LENGTH "D"	THREAD	TIGHTENING TORQUE IN-LB
SBA6	.204	.56	.75	1.58	9/16"-18UNF	165
SBA4	.258	.62	.81	1.38	5/8"-18UNF	165
SBA2	.323	.69	.94	1.58	11/16"-16UN	275
SBA1/0	.385	.75	1.00	1.92	3/4"-16UNF	385
SBA2/0	.435	.88	1.12	1.92	7/8"-14UNF	385
SBA4/0	.544	1.13	1.49	2.54	1 3/16"-12UN	500

PART NUMBER	ALUM. TO ALUM., ALUM TO COPPER, COPPER TO COPPER CONDUCTORS					
	MAX. RUN TO MAX. TAP		MIN. RUN TO MIN. TAP		MAX. RUN TO MIN. TAP	
SBA6	#6 STR(.184)	#6 STR(.184)	#10 SOL(.102)	#10 SOL(.102)	#6 STR(.184)	#10 SOL(.102)
SBA4	#4 STR(.232)	#4 STR(.232)	#8 SOL(.129)	#10 SOL(.102)	#4 STR(.232)	#10 SOL(.102)
SBA2	#2 STR(.292)	#2 STR(.292)	#6 SOL(.169)	#8 STR(.146)	#2 STR(.292)	#8 STR(.146)
SBA1/0	#1/0 STR(.373)	#1/0 STR(.373)	#2 STR(.268) (COMPACT)	#8 SOL(.129)	#1/0 STR(.373)	#8 SOL(.129)
SBA2/0	#2/0 STR(.418)	#2/0 STR(.418)	#2 STR(.268) (COMPACT)	#8 STR(.146)	#2/0 STR(.418)	#8 STR(.146)
SBA4/0	#4/0 STR(.528)	#4/0 STR(.528)	#2 STR(.268) (COMPACT)	#6 STR(.184)	#4/0 STR(.528)	#6 STR(.184)



NOTES:

1. ALL SPLIT BOLT COMPONENTS ARE ALUMINUM ALLOY MATERIAL.
2. SPLIT BOLT BODY, SPACER AND PRESSURE BAR ARE ELECTRO TIN PLATED.
4. U/L LISTED PER UL486B- 90°C RATED. C.S.A. CERTIFIED
5. FOR INSTALLATION OF 90° C MAX RATED CONDUCTORS IN NEC APPLICATIONS THERE IS NO NEED TO SCRATCH BRUSH AND NO NEED TO USE OXIDE INHIBITING COMPOUND. FOR ALL OTHER APPLICATIONS OXIDE INHIBITING COMPOUND IS RECOMENDED.
6. RATED FOR ALUMINUM TO ALUMINUM, ALUMINUM TO COPPER AND COPPER TO COPPER CONDUCTORS.

REV	DATE	BY	CHK	APR	DESCRIPTION	ECN
01	2/13	JHNU	JHNU	RGB	REVISED TITLE BLOCK, REVISED DWG SIZE TO B	N41298BA-C41298
00	1/01	EJS			RELEASED	

TITLE				ALUMINUM SPLIT BOLT CONNECTORS #6 AWG THRU 4/0 AWG			
CUSTOMER DRAWING							
ITEM REVISION NAME		N41298BA/01		DATASET FILE NAME		N41298BA/01	
UNLESS OTHERWISE SPECIFIED, DIMENSIONAL TOLERANCES ARE: IN [mm]				MATERIAL:			
.X ±		.XXX ±		ANGLES ±		SEE NOTES	
.XX ± .02						DRAWING NUMBER:	
		THIRD ANGLE PROJECTION				C41298	
DRAWN BY	DATE	CHK	SCALE	SHT 1 OF 1		SIZE	
EJS			NONE			B	

D101000B/12