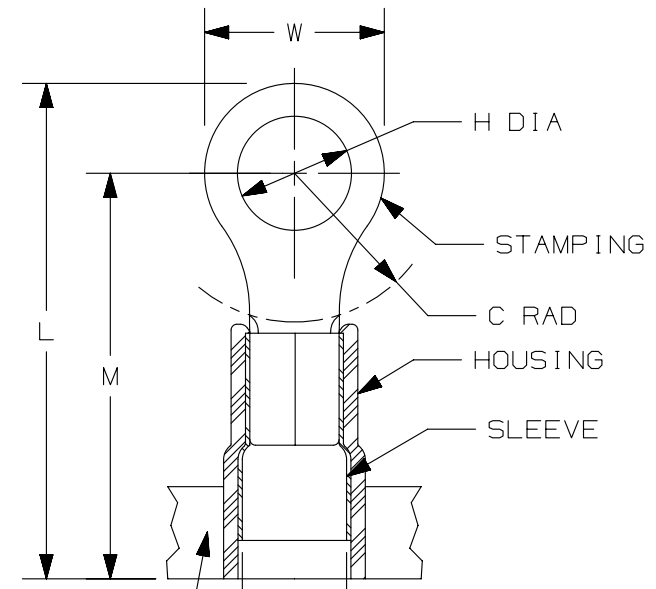


THIS COPY IS PROVIDED ON A RESTRICTED BASIS AND IS NOT TO BE USED IN ANY WAY DETRIMENTAL TO THE INTERESTS OF PANDUIT CORP.

| PANDUIT PART # | MILITARY PART # AND CLASS | STUD SIZE | | DIMENSIONS in. [mm] | | | | |
|----------------|---------------------------|-----------|--------|---------------------|---------------|---------------|---------------|---------------|
| | | ENGLISH | METRIC | L ± .03 [0,8] | W ± .01 [0,3] | C ± .02 [0,5] | M ± .03 [0,8] | H ± .01 [0,3] |
| PN14-4R | MS25036-152 CLASS 2 | #4 | M3 | .76 [19,3] | .25 [6,4] | .22 [5,6] | .65 [16,5] | .12 [3,1] |
| PMN2-3R | ----- | -- | M3 | .85 [21,6] | .23 [5,8] | .20 [5,1] | .65 [16,5] | .13 [3,3] |
| PN14-6R | MS25036-107 CLASS 2 | #6 | M3,5 | .86 [21,8] | .31 [7,9] | .25 [6,4] | .70 [17,8] | .15 [3,8] |
| PN14-6RN | MS25036-106 CLASS 2 | #6 | M3,5 | .76 [19,3] | .25 [6,4] | .22 [5,6] | .65 [16,5] | .15 [3,8] |
| PN14-8R | MS25036-153 CLASS 2 | #8 | M4 | .86 [21,8] | .31 [7,9] | .25 [6,4] | .70 [17,8] | .17 [4,3] |
| PN14-10R | MS25036-108 CLASS 2 | #10 | -- | .86 [21,8] | .31 [7,9] | .25 [6,4] | .70 [17,8] | .20 [5,1] |
| PMN2-5R | ----- | -- | M5 | .97 [24,6] | .35 [8,9] | .26 [6,5] | .71 [18,0] | .21 [5,3] |
| PN14-14R | MS25036-154 CLASS 2 | 1/4" | M6 | 1.06 [26,9] | .44 [11,2] | .38 [9,7] | .83 [21,1] | .27 [6,9] |



- NOTES:
- USED FOR:
 - A. #16-14 AWG [1,5-2,5 mm²] SOLID OR STRANDED COPPER WIRE
 - B. 221°F [105°C] MAX. OPERATING TEMPERATURE
 - C. 600 V. MAX. VOLTAGE RATING
 - INSTALLATION TOOLS:
 - A. PRESSES: CP-861, CP-862, CP-871
 - B. APPLICATOR: CA-800EZ, CA9
 - C. DIE INSERTS: CD-800-2, CD9-2A, CD9-2B
 - WIRE STRIP LENGTH: 1/4 ^{+1/32} [6,4^{+0,8}]
 - MATERIAL:
 - A. STAMPING: .03" [0,8] THK COPPER, TIN PLATED
 - B. HOUSING: NYLON, BLUE
 - C. SLEEVE: BRASS, TIN PLATED
 - SEE www.panduit.com FOR PACKAGE QUANTITIES INDICATED BY PART NUMBER SUFFIX
 - DIMENSIONS IN BRACKETS ARE METRIC EQUIVALENT

CARRIER STRIP (CONFIGURATION MAY VARY)

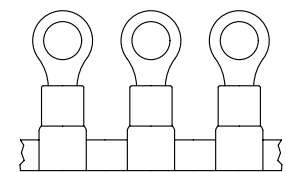
.16 [4,1] MAX. WIRE INSUL. DIA.



LISTED 587H E52164



CERTIFIED LR31212



| REV | DATE | BY | CHK | APR | DESCRIPTION | ECN |
|-----|----------|-----|-----|-----|---|--------|
| 07 | 09.12.12 | JBN | LCA | VMB | ADDED METRIC EQUIVALENT. REVISED NOTES. UPDATED DRAWING TO CURRENT STANDARDS. | A41099 |

| | | | | |
|---|------|---|--------|------|
| TITLE | | RING TERMINALS, 3 PC. NYLON INSULATED, #16-14 | | |
| | | CUSTOMER DRAWING | | |
| ITEM REVISION NAME | | N41099BA/07 | | |
| DATASET FILE NAME | | N41099BA_DC/07A | | |
| UNLESS OTHERWISE SPECIFIED, DIMENSIONAL TOLERANCES ARE: IN [mm] | | MATERIAL: SEE NOTES | | |
| .x ± .1 [2.54] .xxx ± .005 [.13] | | DRAWING NUMBER: A41099 | | |
| .xx ± .01 [.25] ANGLES ± 5° | | THIRD ANGLE PROJECTION | | |
| DRAWN BY | DATE | CHK | SCALE | SIZE |
| JMV | - | LA | N.T.S. | A |

D101000DA/15