

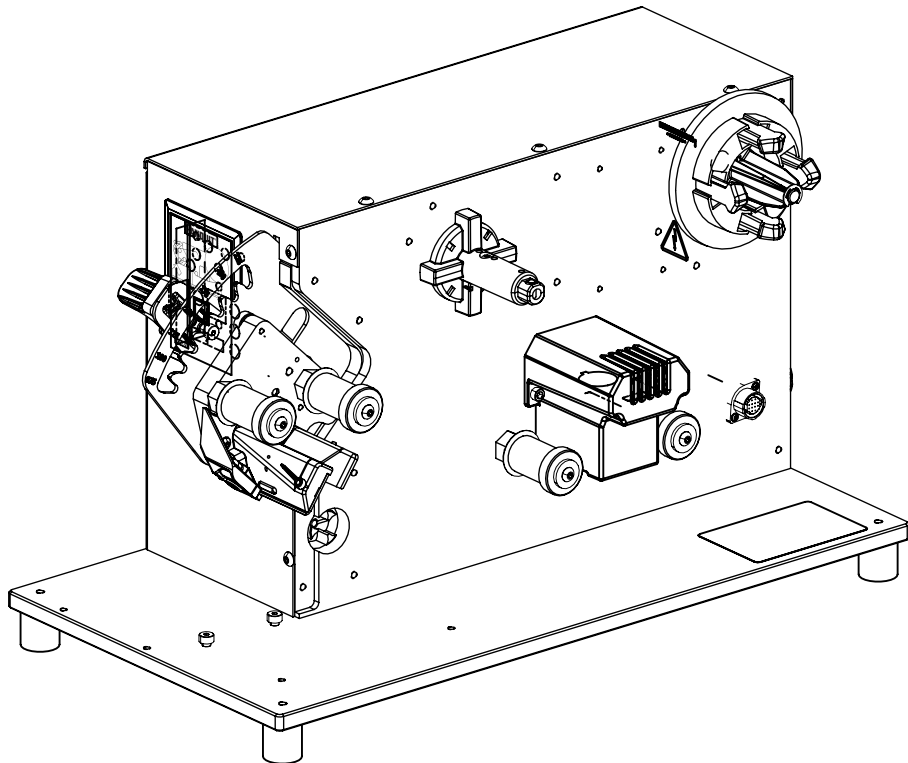
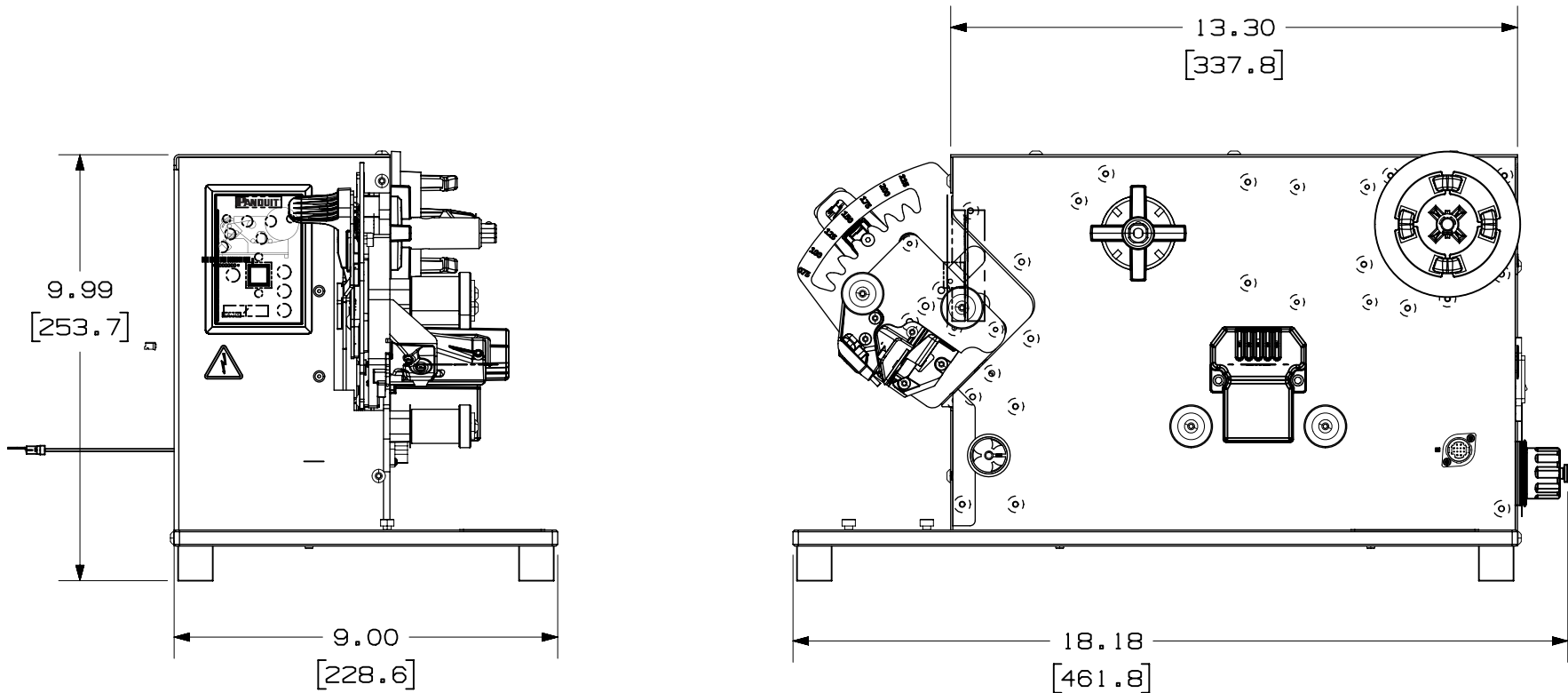
2



1

THIS COPY IS PROVIDED ON A RESTRICTED BASIS AND IS NOT TO BE USED IN ANY WAY DETRIMENTAL TO THE INTERESTS OF PANDUIT CORP.

- NOTES:
- 1. VISIT OUR ON-LINE CATALOG AT WWW.PANDUIT.COM FOR A LIST OF CURRENT PARTS APPLICABLE FOR USE WITH THIS PRODUCT.
 - 2. DIMENSIONS IN [] ARE METRIC.
 - 3. ALL MATERIALS AND COMPONENTS USED MEET THE MATERIAL RESTRICTIONS OF RoHS (EUROPEAN DIRECTIVE 2011/65/EU ON THE RESTRICTION OF HAZARDOUS SUBSTANCES) AS PROPOSED BY THE RoHS TECHNICAL ADAPTATION COMMITTEE.
 - 4. WEIGHT: 23.3lbs.
 - 5. PART INCLUDES: PLA-100 Applicator Assembly
 - 6. TOLERANCES: X.X +/- 0.10"; X.XX +/- 0.010" ; X.XXX +/- 0.005"



WE ASK THAT YOU CHECK FULLY THE DIMENSIONS, NOTES, AND SIGN THE CLIENT SIGNATURE BOX. THE JOB WILL NOT PROGRESS WITHOUT SIGNED APPROVAL. PLEASE DO NOT DELAY IN RETURNING PROOF AS IT WILL AFFECT DELIVERY.	SIGN
	PRINT
	DAE

PART NUMBER		00129ERF	
TITLE		PLA-100	
ITEM REVISION NAME		CUSTOMER DRAWING	
DATASET FILE NAME		00129ERF_DC_01A	
MATERIAL		XXXXXXXXXXXX	
DRAWN BY		DATE	09/28/20
CHK		ALP	NONE
SCALE		NONE	
DRAWING NUMBER		00129ERF - DC	
SHEET 1 OF 1		B	

00	09/28/20	LAH	RDSE	ALP	INITIAL RELEASE	
REV	DATE	BY	CHK	APR	DESCRIPTION	ECN