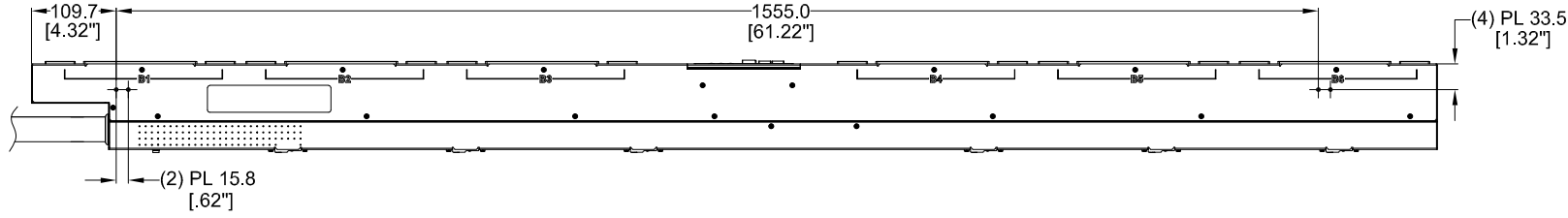


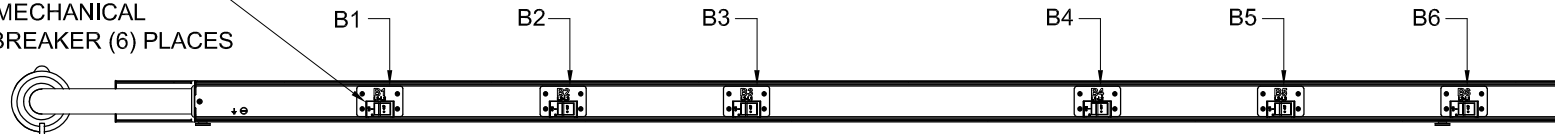
THIS COPY IS PROVIDED ON A RESTRICTED BASIS AND IS NOT TO BE USED IN ANY WAY DETRIMENTAL TO THE INTERESTS OF PANDUIT CORP.

|              |             |
|--------------|-------------|
| PANDUIT P/N  | WEIGHT      |
| P48D35M-XXYZ | SEE SHEET 2 |

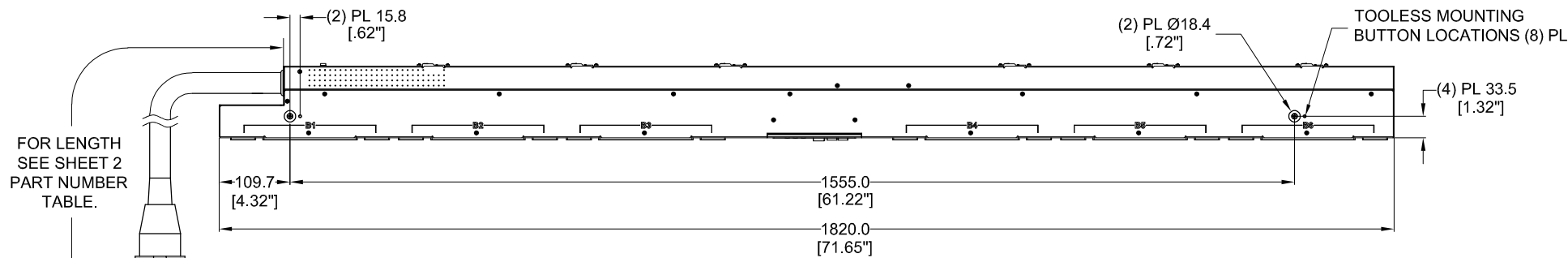


LEFT VIEW

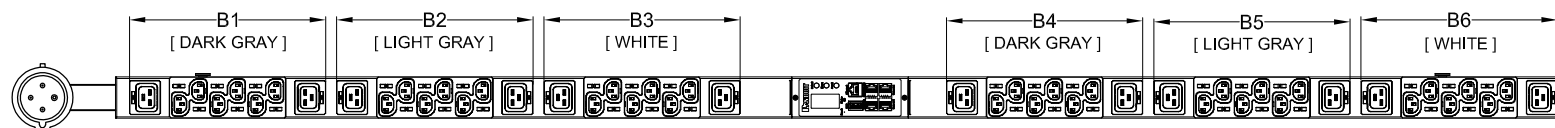
20 AMP, DOUBLE - POLE  
ELECTRO MECHANICAL  
SWITCH / BREAKER (6) PLACES



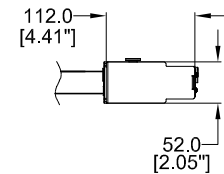
REAR VIEW



RIGHT VIEW



FRONT VIEW



BOTTOM VIEW

**SPECIFICATION:**

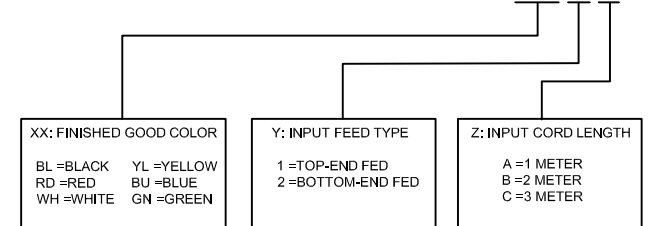
- STANDARD:
  - UNIT TYPE: MONITORED INPUT
  - ORIENTATION: VERTICAL, 0U FULL, 2-SIDED
  - OUTLET QTY & TYPE: (36) C13, (12) C19
  - INPUT VOLTAGE: 200-240VAC
  - INPUT CURRENT: 60A (48A DERATED)
  - BREAKER QTY & TYPE: (6) 20AMP, DOUBLE-POLE
  - INPUT PHASE: THREE-PHASE DELTA
  - RATED POWER: 17.3kVA
  - INPUT PLUG: IEC 60309 3P+E 9H 60A
  - INPUT POWER CORD: SEE SHEET 2 FOR PART NUMBER TABLE
  - REGULATORY STANDARD: RoHS COMPLIANT
- ADDITIONAL: NONE
- ACCESSORIES: (1) QUICK-START GUIDE

**NOTES:**

- PRIMARY DIMENSIONS ARE IN MILLIMETERS. SECONDARY DIMENSION ARE IN [ INCHES ]
- INSTALLATION SHALL COMPLY WITH ALL APPLICABLE NATIONAL, STATE, AND LOCAL CODES
- VISIT OUR ON-LINE CATALOG AT [WWW.PANDUIT.COM](http://WWW.PANDUIT.COM) FOR A CURRENT LIST OF PRODUCTS APPLICABLE FOR USE WITH THIS PART
- FOR FULL PRODUCT FUNCTIONALITY REFER TO USER MANUAL
- DRAWING VIEWS SHOW THE INPUT CORD IN THE "TOP END FED" CONFIGURATION

**IDENTIFICATION**

FOR FINISHED GOOD PART NUMBER & DESCRIPTION TABLE SEE SHEET 2 CONFIGURABLE PART NUMBERS: P48D35M-XX Y Z



**PLUG/RECEPTACLE BLOCK**



PLUG  
IEC 60309, 3P 4W, 9H  
IP44 (SPASHPROOF)  
60A, 250V, 3 - PHASE MAX RATED INPUT  
48A DERATED



RECEPTACLES  
IEC 60320/C19  
16A, 250V MAX RATED OUTPUT



RECEPTACLES  
IEC 60320/C13  
10A, 250V MAX RATED OUTPUT

| REV | DATE       | BY     | CHK | APR  | DESCRIPTION   | ECN     |
|-----|------------|--------|-----|------|---|---------|
| 02A | 06/07/2018 | H.XU   | MIM | JAWI | ADDED SHEET 2 WITH CONFIGURABLE PART NUMBER TABLE AND DESCRIPTION<br>UPDATED IDENTIFICATION TO INCLUDE CONFIGURABLE OPTION DE-CODER<br>UPDATED CIRCUIT BREAKER LABELS WITH ROTATED TEXT | P48D35M |
| 01A | 09/25/2017 | GEORGE | MIM | EDM  | INITIAL RELEASE   | P48D35M |

|  |                  |                               |
|--|------------------|-------------------------------|
| WE ASK THAT YOU CHECK FULLY THE DIMENSIONS, NOTES, AND SIGN THE CLIENT SIGNATURE BOX. THE JOB WILL NOT PROGRESS WITHOUT SIGNED APPROVAL. PLEASE DO NOT DELAY IN RETURNING PROOF AS IT WILL AFFECT DELIVERY |                  | SIGN                          |
|  |                  | DATE                          |
|  |                  | PRINT                         |
| TITLE: INTELLIGENT SERIES PDU<br>P48D35M-XXYZ<br>CUSTOMER DRAWING  |                  |                               |
| ITEM REVISION NAME:  |                  |                               |
| DATASHEET FILE NAME:   |                  |                               |
| UNLESS OTHERWISE SPECIFIED<br>DIMENSIONAL TOLERANCE ARE: mm [IN]   |                  | MATERIAL/COLOR:               |
| Tolerance(mm)<br>0<L<50 ±0.5<br>50<L<250 ±1.0<br>250<L<500 ±1.5<br>500<L<1000 ±2.5<br>1000<L<2000 ±4.0   |                  | N/A                           |
| THIRD ANGLE PROJECTION   |                  | DRAWING NUMBER:<br>P48D35M_DC |
| DRAWN BY: GEORGE   | DATE: 09/25/2017 | CHK: SEAN                     |
| SCALE: NONE  | SHT 1 OF 2       |                               |
|  |                  | SCALE: B                      |

THIS COPY IS PROVIDED ON A RESTRICTED BASIS AND IS NOT TO BE USED IN ANY WAY DETRIMENTAL TO THE INTERESTS OF PANDUIT CORP.

| FINISHED GOOD PART NUMBER | FINISHED GOOD DESCRIPTION   | COLOR             | INPUT CORD LENGTH                    | WEIGHT |
|---------------------------|---|-------------------|--------------------------------------|--------|
| P48D35M                   | VERTICAL,(36) C13,(12) C19,MONITORED INPUT, 200-240V/60A/3 PHASE DELTA , TOP-END FED, 3 METER INPUT CORD, BLACK     | BLACK (RAL 9005)  | 3M(+254MM/-127MM) 10' [+10"/-5"]     | 16.5kg |
| P48D35M-BL1A              | VERTICAL,(36) C13,(12) C19,MONITORED INPUT, 200-240V/60A/3 PHASE DELTA , TOP-END FED, 1 METER INPUT CORD, BLACK     | BLACK (RAL 9005)  | 1M(+178MM/-89MM) 3.3' [+3.5"/-1.75"] | 13.9kg |
| P48D35M-BL1B              | VERTICAL,(36) C13,(12) C19,MONITORED INPUT, 200-240V/60A/3 PHASE DELTA , TOP-END FED, 2 METER INPUT CORD, BLACK     | BLACK (RAL 9005)  | 2M(+178MM/-89MM) 6.5' [+7"/-3.5"]    | 15.2kg |
| P48D35M-RD1A              | VERTICAL,(36) C13,(12) C19,MONITORED INPUT, 200-240V/60A/3 PHASE DELTA , TOP-END FED, 1 METER INPUT CORD, RED       | RED (RAL 3020)    | 1M(+178MM/-89MM) 3.3' [+3.5"/-1.75"] | 13.9kg |
| P48D35M-RD1B              | VERTICAL,(36) C13,(12) C19,MONITORED INPUT, 200-240V/60A/3 PHASE DELTA , TOP-END FED, 2 METER INPUT CORD, RED       | RED (RAL 3020)    | 2M(+178MM/-89MM) 6.5' [+7"/-3.5"]    | 15.2kg |
| P48D35M-RD1C              | VERTICAL,(36) C13,(12) C19,MONITORED INPUT, 200-240V/60A/3 PHASE DELTA , TOP-END FED, 3 METER INPUT CORD, RED       | RED (RAL 3020)    | 3M(+254MM/-127MM) 10' [+10"/-5"]     | 16.5kg |
| P48D35M-WH1A              | VERTICAL,(36) C13,(12) C19,MONITORED INPUT, 200-240V/60A/3 PHASE DELTA , TOP-END FED, 1 METER INPUT CORD, WHITE     | WHITE (RAL 9003)  | 1M(+178MM/-89MM) 3.3' [+3.5"/-1.75"] | 13.9kg |
| P48D35M-WH1B              | VERTICAL,(36) C13,(12) C19,MONITORED INPUT, 200-240V/60A/3 PHASE DELTA , TOP-END FED, 2 METER INPUT CORD, WHITE     | WHITE (RAL 9003)  | 2M(+178MM/-89MM) 6.5' [+7"/-3.5"]    | 15.2kg |
| P48D35M-WH1C              | VERTICAL,(36) C13,(12) C19,MONITORED INPUT, 200-240V/60A/3 PHASE DELTA , TOP-END FED, 3 METER INPUT CORD, WHITE     | WHITE (RAL 9003)  | 3M(+254MM/-127MM) 10' [+10"/-5"]     | 16.5kg |
| P48D35M-YL1A              | VERTICAL,(36) C13,(12) C19,MONITORED INPUT, 200-240V/60A/3 PHASE DELTA , TOP-END FED, 1 METER INPUT CORD, YELLOW    | YELLOW (RAL 1023) | 1M(+178MM/-89MM) 3.3' [+3.5"/-1.75"] | 13.9kg |
| P48D35M-YL1B              | VERTICAL,(36) C13,(12) C19,MONITORED INPUT, 200-240V/60A/3 PHASE DELTA , TOP-END FED, 2 METER INPUT CORD, YELLOW    | YELLOW (RAL 1023) | 2M(+178MM/-89MM) 6.5' [+7"/-3.5"]    | 15.2kg |
| P48D35M-YL1C              | VERTICAL,(36) C13,(12) C19,MONITORED INPUT, 200-240V/60A/3 PHASE DELTA , TOP-END FED, 3 METER INPUT CORD, YELLOW    | YELLOW (RAL 1023) | 3M(+254MM/-127MM) 10' [+10"/-5"]     | 16.5kg |
| P48D35M-BU1A              | VERTICAL,(36) C13,(12) C19,MONITORED INPUT, 200-240V/60A/3 PHASE DELTA , TOP-END FED, 1 METER INPUT CORD, BLUE      | BLUE (RAL 5005)   | 1M(+178MM/-89MM) 3.3' [+3.5"/-1.75"] | 13.9kg |
| P48D35M-BU1B              | VERTICAL,(36) C13,(12) C19,MONITORED INPUT, 200-240V/60A/3 PHASE DELTA , TOP-END FED, 2 METER INPUT CORD, BLUE      | BLUE (RAL 5005)   | 2M(+178MM/-89MM) 6.5' [+7"/-3.5"]    | 15.2kg |
| P48D35M-BU1C              | VERTICAL,(36) C13,(12) C19,MONITORED INPUT, 200-240V/60A/3 PHASE DELTA , TOP-END FED, 3 METER INPUT CORD, BLUE      | BLUE (RAL 5005)   | 3M(+254MM/-127MM) 10' [+10"/-5"]     | 16.5kg |
| P48D35M-GN1A              | VERTICAL,(36) C13,(12) C19,MONITORED INPUT, 200-240V/60A/3 PHASE DELTA , TOP-END FED, 1 METER INPUT CORD, GREEN     | GREEN (RAL 6001)  | 1M(+178MM/-89MM) 3.3' [+3.5"/-1.75"] | 13.9kg |
| P48D35M-GN1B              | VERTICAL,(36) C13,(12) C19,MONITORED INPUT, 200-240V/60A/3 PHASE DELTA , TOP-END FED, 2 METER INPUT CORD, GREEN     | GREEN (RAL 6001)  | 2M(+178MM/-89MM) 6.5' [+7"/-3.5"]    | 15.2kg |
| P48D35M-GN1C              | VERTICAL,(36) C13,(12) C19,MONITORED INPUT, 200-240V/60A/3 PHASE DELTA , TOP-END FED, 3 METER INPUT CORD, GREEN     | GREEN (RAL 6001)  | 3M(+254MM/-127MM) 10' [+10"/-5"]     | 16.5kg |
| P48D35M-BL2A              | VERTICAL,(36) C13,(12) C19,MONITORED INPUT, 200-240V/60A/3 PHASE DELTA , BOTTOM-END FED, 1 METER INPUT CORD, BLACK  | BLACK (RAL 9005)  | 1M(+178MM/-89MM) 3.3' [+3.5"/-1.75"] | 13.9kg |
| P48D35M-BL2B              | VERTICAL,(36) C13,(12) C19,MONITORED INPUT, 200-240V/60A/3 PHASE DELTA , BOTTOM-END FED, 2 METER INPUT CORD, BLACK  | BLACK (RAL 9005)  | 2M(+178MM/-89MM) 6.5' [+7"/-3.5"]    | 15.2kg |
| P48D35M-BL2C              | VERTICAL,(36) C13,(12) C19,MONITORED INPUT, 200-240V/60A/3 PHASE DELTA , BOTTOM-END FED, 3 METER INPUT CORD, BLACK  | BLACK (RAL 9005)  | 3M(+254MM/-127MM) 10' [+10"/-5"]     | 16.5kg |
| P48D35M-RD2A              | VERTICAL,(36) C13,(12) C19,MONITORED INPUT, 200-240V/60A/3 PHASE DELTA , BOTTOM-END FED, 1 METER INPUT CORD, RED    | RED (RAL 3020)    | 1M(+178MM/-89MM) 3.3' [+3.5"/-1.75"] | 13.9kg |
| P48D35M-RD2B              | VERTICAL,(36) C13,(12) C19,MONITORED INPUT, 200-240V/60A/3 PHASE DELTA , BOTTOM-END FED, 2 METER INPUT CORD, RED    | RED (RAL 3020)    | 2M(+178MM/-89MM) 6.5' [+7"/-3.5"]    | 15.2kg |
| P48D35M-RD2C              | VERTICAL,(36) C13,(12) C19,MONITORED INPUT, 200-240V/60A/3 PHASE DELTA , BOTTOM-END FED, 3 METER INPUT CORD, RED    | RED (RAL 3020)    | 3M(+254MM/-127MM) 10' [+10"/-5"]     | 16.5kg |
| P48D35M-WH2A              | VERTICAL,(36) C13,(12) C19,MONITORED INPUT, 200-240V/60A/3 PHASE DELTA , BOTTOM-END FED, 1 METER INPUT CORD, WHITE  | WHITE (RAL 9003)  | 1M(+178MM/-89MM) 3.3' [+3.5"/-1.75"] | 13.9kg |
| P48D35M-WH2B              | VERTICAL,(36) C13,(12) C19,MONITORED INPUT, 200-240V/60A/3 PHASE DELTA , BOTTOM-END FED, 2 METER INPUT CORD, WHITE  | WHITE (RAL 9003)  | 2M(+178MM/-89MM) 6.5' [+7"/-3.5"]    | 15.2kg |
| P48D35M-WH2C              | VERTICAL,(36) C13,(12) C19,MONITORED INPUT, 200-240V/60A/3 PHASE DELTA , BOTTOM-END FED, 3 METER INPUT CORD, WHITE  | WHITE (RAL 9003)  | 3M(+254MM/-127MM) 10' [+10"/-5"]     | 16.5kg |
| P48D35M-YL2A              | VERTICAL,(36) C13,(12) C19,MONITORED INPUT, 200-240V/60A/3 PHASE DELTA , BOTTOM-END FED, 1 METER INPUT CORD, YELLOW | YELLOW (RAL 1023) | 1M(+178MM/-89MM) 3.3' [+3.5"/-1.75"] | 13.9kg |
| P48D35M-YL2B              | VERTICAL,(36) C13,(12) C19,MONITORED INPUT, 200-240V/60A/3 PHASE DELTA , BOTTOM-END FED, 2 METER INPUT CORD, YELLOW | YELLOW (RAL 1023) | 2M(+178MM/-89MM) 6.5' [+7"/-3.5"]    | 15.2kg |
| P48D35M-YL2C              | VERTICAL,(36) C13,(12) C19,MONITORED INPUT, 200-240V/60A/3 PHASE DELTA , BOTTOM-END FED, 3 METER INPUT CORD, YELLOW | YELLOW (RAL 1023) | 3M(+254MM/-127MM) 10' [+10"/-5"]     | 16.5kg |
| P48D35M-BU2A              | VERTICAL,(36) C13,(12) C19,MONITORED INPUT, 200-240V/60A/3 PHASE DELTA , BOTTOM-END FED, 1 METER INPUT CORD, BLUE   | BLUE (RAL 5005)   | 1M(+178MM/-89MM) 3.3' [+3.5"/-1.75"] | 13.9kg |
| P48D35M-BU2B              | VERTICAL,(36) C13,(12) C19,MONITORED INPUT, 200-240V/60A/3 PHASE DELTA , BOTTOM-END FED, 2 METER INPUT CORD, BLUE   | BLUE (RAL 5005)   | 2M(+178MM/-89MM) 6.5' [+7"/-3.5"]    | 15.2kg |
| P48D35M-BU2C              | VERTICAL,(36) C13,(12) C19,MONITORED INPUT, 200-240V/60A/3 PHASE DELTA , BOTTOM-END FED, 3 METER INPUT CORD, BLUE   | BLUE (RAL 5005)   | 3M(+254MM/-127MM) 10' [+10"/-5"]     | 16.5kg |
| P48D35M-GN2A              | VERTICAL,(36) C13,(12) C19,MONITORED INPUT, 200-240V/60A/3 PHASE DELTA , BOTTOM-END FED, 1 METER INPUT CORD, GREEN  | GREEN (RAL 6001)  | 1M(+178MM/-89MM) 3.3' [+3.5"/-1.75"] | 13.9kg |
| P48D35M-GN2B              | VERTICAL,(36) C13,(12) C19,MONITORED INPUT, 200-240V/60A/3 PHASE DELTA , BOTTOM-END FED, 2 METER INPUT CORD, GREEN  | GREEN (RAL 6001)  | 2M(+178MM/-89MM) 6.5' [+7"/-3.5"]    | 15.2kg |
| P48D35M-GN2C              | VERTICAL,(36) C13,(12) C19,MONITORED INPUT, 200-240V/60A/3 PHASE DELTA , BOTTOM-END FED, 3 METER INPUT CORD, GREEN  | GREEN (RAL 6001)  | 3M(+254MM/-127MM) 10' [+10"/-5"]     | 16.5kg |

B

B

A

A

| REV | DATE       | BY     | CHK | APR  | DESCRIPTION   | ECN     |
|-----|------------|--------|-----|------|---|---------|
| 02A | 06/07/2018 | H.XU   | MIM | JAWI | ADDED SHEET 2 WITH CONFIGURABLE PART NUMBER TABLE AND DESCRIPTION<br>UPDATED IDENTIFICATION TO INCLUDE CONFIGURABLE OPTION DE-CODER<br>UPDATED CIRCUIT BREAKER LABELS WITH ROTATED TEXT | P48D35M |
| 01A | 09/25/2017 | GEORGE | MIM | EDM  | INITIAL RELEASE   | P48D35M |

|   |                    |                               |
|---|--------------------|-------------------------------|
| WE ASK THAT YOU CHECK FULLY THE DIMENSIONS, NOTES, AND SIGN THE CLIENT SIGNATURE BOX.<br>THE JOB WILL NOT PROGRESS WITHOUT SIGNED APPROVAL. PLEASE DO NOT DELAY IN RETURNING PROOF AS IT WILL AFFECT DELIVERY |                    | SIGN                          |
|   |                    | DATE                          |
|   |                    | PRINT                         |
| TITLE:<br>INTELLIGENT SERIES PDU<br>P48D35M-XYZ<br>CUSTOMER DRAWING   |                    |                               |
| ITEM REVISION NAME:   |                    |                               |
| DATASHEET FILE NAME:  |                    |                               |
| UNLESS OTHERWISE SPECIFIED<br>DIMENSIONAL TOLERANCE ARE: mm [IN]  |                    | MATERIAL/COLOR:               |
| Tolerance(mm)<br>0<L<50 ±0.5<br>50<L<250 ±1.0<br>250<L<500 ±1.5<br>500<L<1000 ±2.5<br>1000<L<2000 ±4.0  |                    | N/A                           |
| THIRD ANGLE PROJECTION  |                    | DRAWING NUMBER:<br>P48D35M_DC |
| DRAWN BY<br>GEORGE  | DATE<br>09/25/2017 | CHK<br>SEAN                   |
| SCALE<br>NONE   |                    | SHT 2 OF 2                    |
|   |                    | SCALE<br>B                    |