

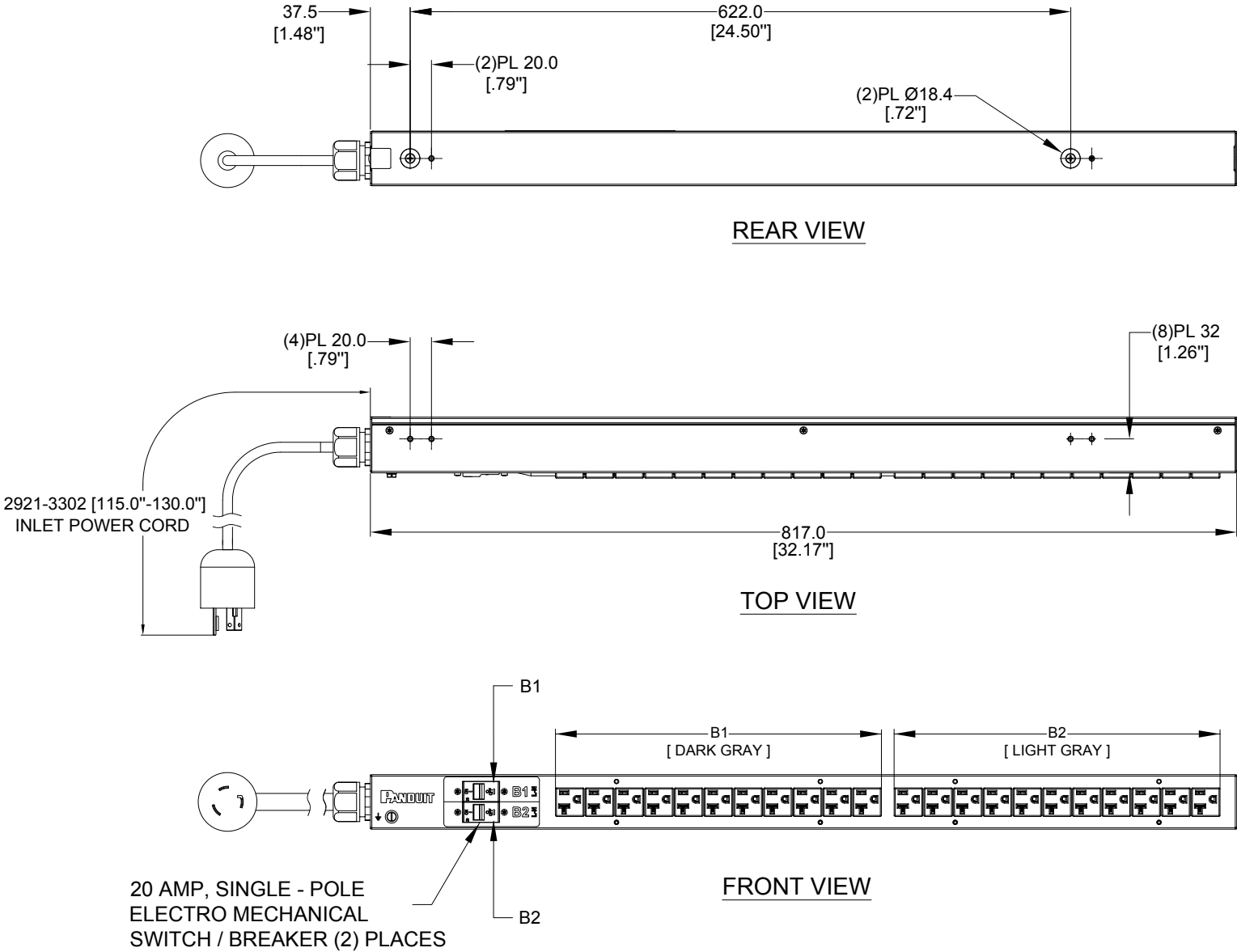
B

A

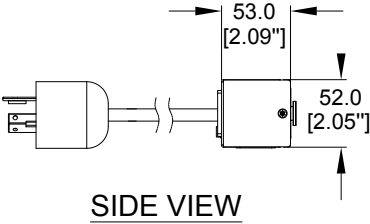
B

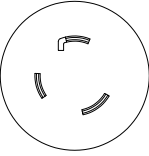
A

PANDUIT P/N	WEIGHT
P22B09M	3.8kg




- NOTES:
1. IDENTIFICATION:  
UNIT TYPE: BASIC  
ORIENTATION: VERTICAL, HALF  
OUTLET QTY&TYPE: (22) 5-20R  
BREAKER QTY&TYPE: (2) 20A, SINGLE-POLE  
INPUT VOLTAGE: 100-120VAC  
INPUT CURRENT: 30A (24A DERATED)  
INPUT PHASE: SINGLE-PHASE  
RATED POWER: 2.9kVA  
INPUT PLUG: NEMA L5-30P  
INPUT CORD LENGTH: 3m [10']
  2. ACCESSORIES:  
POCKET GUIDE
  3. RoHS COMPLIANT
  4. VISIT PANDUIT'S ON-LINE CATALOG AT [WWW.PANDUIT.COM](http://WWW.PANDUIT.COM) FOR  
ADDITIONAL PRODUCT INFORMATION CONTAINED IN THE  
SPECIFICATION SHEET AS WELL AS A CURRENT LIST OF  
PRODUCTS APPLICABLE FOR USE WITH THIS PART
  5. MAXIMUM ALLOWABLE INPUT POWER = 2.9kW
  6. INSTALLATION SHALL COMPLY WITH ALL APPLICABLE NATIONAL,  
STATE, AND LOCAL CODES







PLUG  
30 AMP, 125V  
TWIST LOCK  
NEMA L5-30P



TWENTY-TWO (22)  
RECEPTACLES  
20 AMP, 125V  
STRAIGHT BLADE  
NEMA 5-20R

01B	08/21/2017	HANSON	MIM	EDM	REVISED TOLERANCES	P22B09M
01A	06/28/2017	HANSON	MIM	EDM	INITIAL RELEASE	P22B09M
REV	DATE	BY	CHK	APR	DESCRIPTION	ECN

WE ASK THAT YOU CHECK FULLY THE DIMENSIONS, NOTES, AND SIGN THE CLIENT SIGNATURE BOX. THE JOB WILL NOT PROGRESS WITHOUT SIGNED APPROVAL. PLEASE DO NOT DELAY IN RETURNING PROOF AS IT WILL AFFECT DELIVERY		SIGN DATE PRINT	
TITLE BASIC SERIES PDU P22B09M CUSTOMER DRAWING			
ITEM REVISION NAME			
DATASHEET FILE NAME:			
UNLESS OTHERWISE SPECIFIED DIMENSIONAL TOLERANCE ARE: mm [IN]		MATERIAL/COLOR: N/A	
		DRAWING NUMBER: P22B09M_DC	
		SHT 1 OF 1	
DRAWN BY Hanson	DATE 05/24/2017	CHK SEAN	SCALE NONE