
1

20 AMP, DOUBLE - POLE ELECTRO
MECHANICAL SWITCH / BREAKER (2 PLACES)

The diagram shows a long, narrow rectangular panel with a dashed horizontal line down the center. On the left side, there is a label '20 AMP, DOUBLE - POLE ELECTRO MECHANICAL SWITCH / BREAKER (2 PLACES)' with a line pointing to two units labeled 'B1' and 'B2'. Each unit is a square box with a handle and a label. The units are connected to a power source on the left, indicated by a label '20 AMP, DOUBLE - POLE ELECTRO MECHANICAL SWITCH / BREAKER (2 PLACES)' and a line pointing to the units. The units are connected to a power source on the left, indicated by a label '20 AMP, DOUBLE - POLE ELECTRO MECHANICAL SWITCH / BREAKER (2 PLACES)' and a line pointing to the units.

Technical drawing of the front view of the device. The drawing shows a rectangular frame with a central display area. Dimensions are indicated: 443.5 mm (17.46 inches) for the width and 270.0 mm (10.63 inches) for the height. The drawing includes details of the bezel, mounting brackets, and internal components like the display panel and camera module.

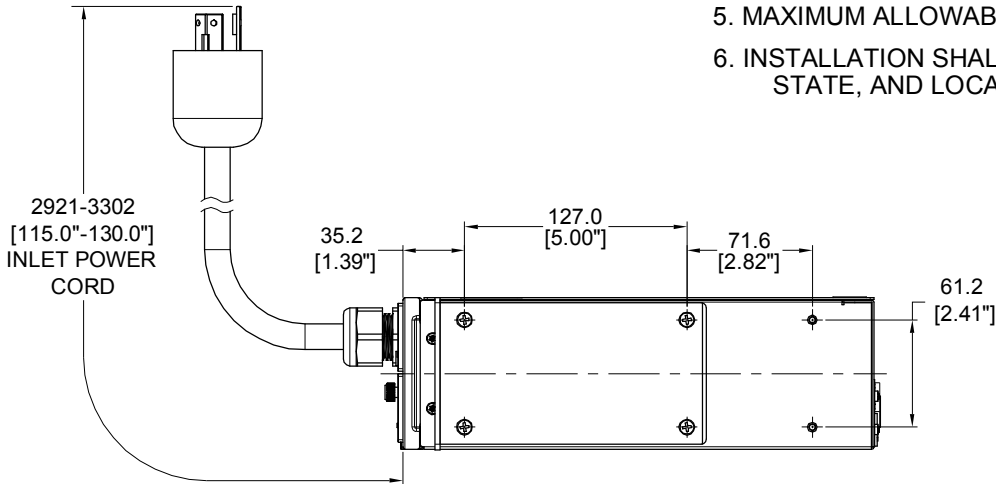
Technical drawing of the front panel of the 1000 Series 1U Rack Mountable Power Supply. The drawing shows a top-down view of the unit with dimensions in millimeters and inches. The unit is 465.0 mm (18.31 inches) wide and 87.0 mm (3.43 inches) high. It features a central power input section with a power switch, a power connector, and a power indicator. To the right of the power input section are two rows of output connectors, labeled B1 (Dark Gray) and B2 (Light Gray). The B1 row contains 10 connectors, and the B2 row contains 10 connectors. The power input section is labeled with 'Power' and 'Power'.


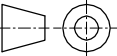
Diagram illustrating the plug and receptacle configurations for the 30 AMP, 250V twist-lock and 16 AMP, 250V straight blade receptacles.

PLUG
30 AMP, 250V
TWIST-LOCK
NEMA L6-30P

FOUR (4)
RECEPTACLES
16 AMP, 250V
STRAIGHT BLADE
IEC 60320/C19

TWELVE (12)
RECEPTACLES
10 AMP, 250V
STRAIGHT BLADE
IEC 60320/C13



WE ASK THAT YOU CHECK FULLY THE DIMENSIONS, NOTES, AND SIGN THE CLIENT SIGNATURE BOX. THE JOB WILL NOT PROGRESS WITHOUT SIGNED APPROVAL. PLEASE DO NOT DELAY IN RETURNING PROOF AS IT WILL AFFECT DELIVERY				SIGN DATE PRINT	
TITLE <div style="text-align: center;"> INTELLIGENT SERIES PDU P16E19M CUSTOMER DRAWING </div>					
ITEM REVISION NAME DATASHEET FILE NAME:					
UNLESS OTHERWISE SPECIFIED DIMENSIONAL TOLERANCE ARE: mm [IN]					
 THIRD ANGLE PROJECTION				MATERIAL/COLOR: <div style="text-align: center;">N/A</div>	
<div style="text-align: right;"> Tolerance(mm) 0<L<50 ±0.5 50<L<250 ±1.0 250<L<500 ±1.5 500<L<1000 ±2.5 1000<L<2000 ±4.0 </div>				DRAWING NUMBER: <div style="text-align: center;">P16E19M_DC</div>	
DRAWN BY	DATE	CHK	SCALE	SCALE	
WSJ	09/25/2017	SEAN	NONE	SHT 1 OF 1 <div style="text-align: right;">B</div>	