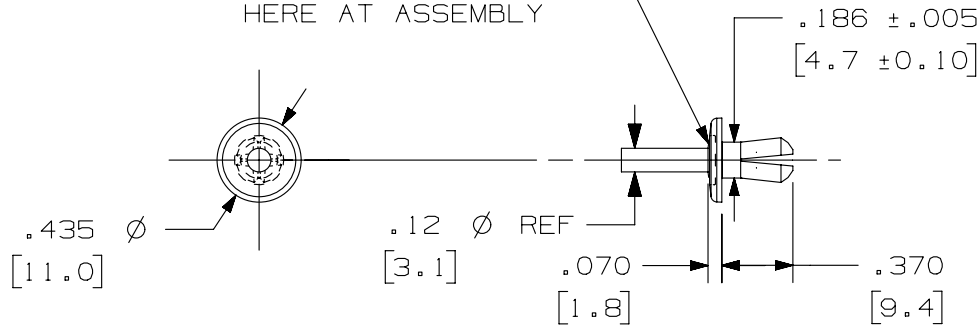


THIS COPY IS PROVIDED ON A RESTRICTED BASIS AND IS NOT TO BE USED IN ANY WAY DETRIMENTAL TO THE INTERESTS OF PANDUIT CORP.

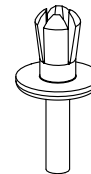
NOTE: PIN DRIVEN IN FLUSH
HERE AT ASSEMBLY



PANDUIT P/N	WEIGHT
NR1-	.11LB/ 100PCS. (50g/ 100PCS.)

- NOTES:
- SEE CURRENT CATALOG FOR ADDITIONAL PART SUFFIXES TO INDICATE COLOR AND OR PACKAGE QUANTITY.
 - DIMENSIONS IN PARENTHESES ARE METRIC.

TOTAL THICKNESS PANEL & DUCT	HOLE SIZE + .005 [.10] - .000 [.00]	ANSI STANDARD DRILL SIZE
.156 - .187 [4.0 - 4.7]	.187 [4.7]	3/16
.188 - .218 [4.8 - 5.5]	.193 [4.9]	10
.219 - .250 [5.6 - 6.35]	.203 [5.2]	13/64
.251 - .281 [6.38 - 7.1]	.213 [5.4]	3



TITLE		PUSH RIVET (NR1) CUSTOMER DRAWING	
ITEM REVISION NAME		D36401BA/01	
DATASET FILE NAME		D36401BA_DC/01G	
UNLESS OTHERWISE SPECIFIED, DIMENSIONAL TOLERANCES ARE: IN [mm]		MATERIAL:	
.X ± .XXX ± .020 [.5] .XX ± ANGLES ±		NYLON 6/6 NATURAL	
THIRD ANGLE PROJECTION		DRAWING NUMBER:	
36401-09		36401-09	
DRAWN BY	DATE	CHK	SCALE
JCST	10-03-06	JKG	FULL
REV	DATE	BY	CHK
2	02-19-13	JBN	RTFI
DESCRIPTION		ECN	
D. UPDATED DRAWING BORDER & TITLE BLOCK		36401-09	
SHT 1 OF 1		A	

D101000DA/14

2

1

2

1