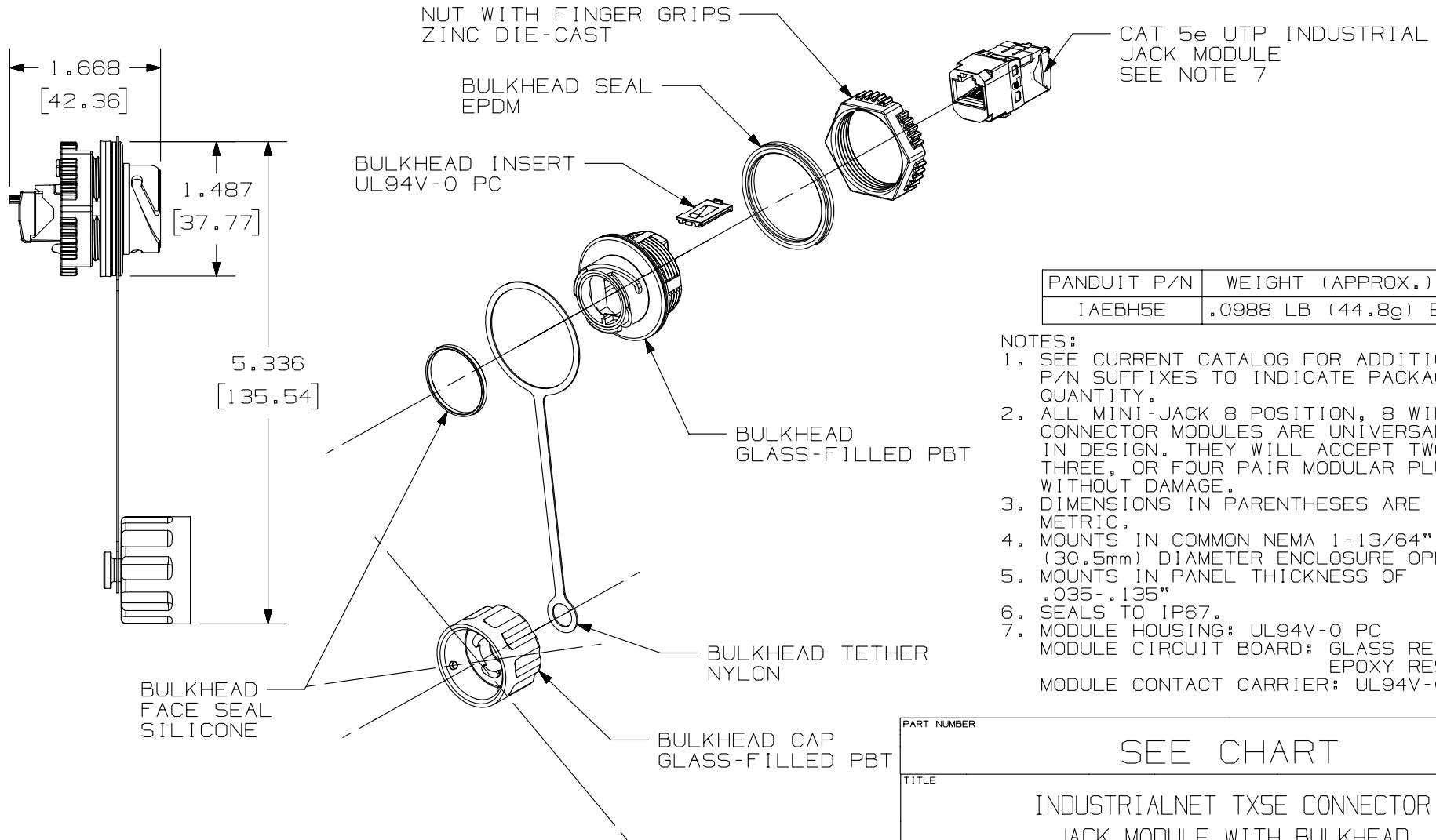


THIS COPY IS PROVIDED ON A RESTRICTED BASIS AND IS NOT TO BE USED IN ANY WAY DETRIMENTAL TO THE INTERESTS OF PANDUIT CORP.



PANDUIT P/N	WEIGHT (APPROX.)
1AEBH5E	.0988 LB (44.8g) EA

- NOTES:
- SEE CURRENT CATALOG FOR ADDITIONAL P/N SUFFIXES TO INDICATE PACKAGE QUANTITY.
 - ALL MINI-JACK 8 POSITION, 8 WIRE CONNECTOR MODULES ARE UNIVERSAL IN DESIGN. THEY WILL ACCEPT TWO, THREE, OR FOUR PAIR MODULAR PLUGS WITHOUT DAMAGE.
 - DIMENSIONS IN PARENTHESES ARE METRIC.
 - MOUNTS IN COMMON NEMA 1-13/64" (30.5mm) DIAMETER ENCLOSURE OPENING.
 - MOUNTS IN PANEL THICKNESS OF .035-.135"
 - SEALS TO IP67.
 - MODULE HOUSING: UL94V-0 PC
MODULE CIRCUIT BOARD: GLASS REINFORCED EPOXY RESIN
MODULE CONTACT CARRIER: UL94V-0 PC

PART NUMBER		SEE CHART	
TITLE			
INDUSTRIALNET TX5E CONNECTOR JACK MODULE WITH BULKHEAD CUSTOMER DRAWING			
ITEM REVISION NAME		M01245EY/05	
DATASET FILE NAME		M01245EY_DC75/05C	
UNLESS OTHERWISE SPECIFIED, DIMENSIONAL TOLERANCES ARE: IN (mm)		MATERIAL:	
.x ± .xx ± .03 (.8)		.xxx ± .01 (.25) ANGLES ±	
DRAWING NUMBER:		01245-75	
DRAWN BY	DATE	CHK	SCALE
BJN	10-30-06	CEF	
THIRD ANGLE PROJECTION		SHT 1 OF 1	
ECN		A	

REV	DATE	BY	CHK	APR	DESCRIPTION	ECN
4	5-9-14	TA	REFR	REFR	REVISED TITLE BLOCK. ALL PREVIOUS REVISIONS OMITTED FOR CLARITY.	01245-75

D10100DA/14

2

1

2

1