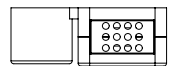
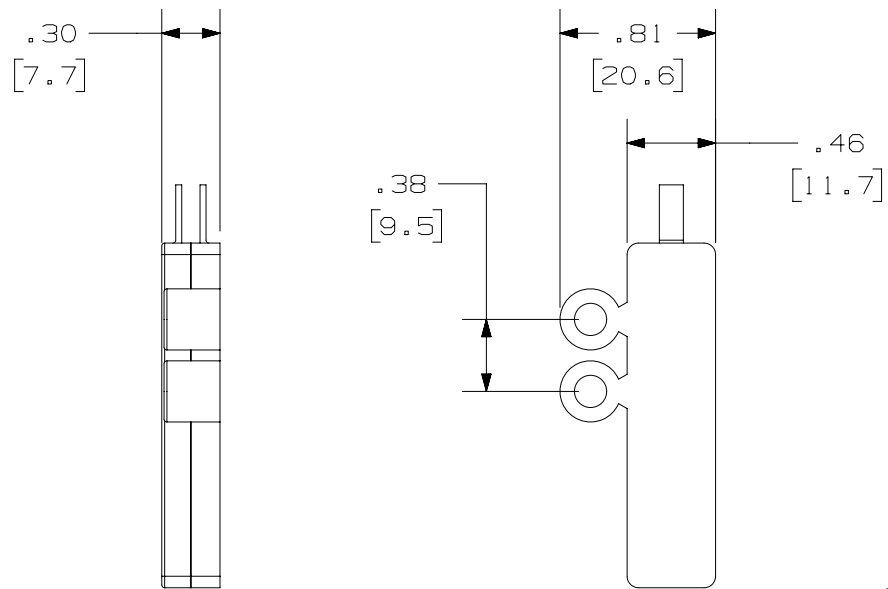
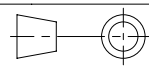



THIS COPY IS PROVIDED ON A RESTRICTED BASIS AND IS NOT TO BE USED IN ANY WAY DETRIMENTAL TO THE INTERESTS OF PANDUIT CORP.

NOTES:

1. SEE WWW.PANDUIT.COM FOR ADDITIONAL INFORMATION.
2. DIMENSIONS IN [] ARE METRIC.
3. MATERIAL:
TUBING: HYTREL
BASE, COVER AND BREAKOUT BLOCK: ABS
4. THE BREAKOUT BLOCK TUBE ASSEMBLY WILL ROUTE 250 MICRON FIBERS INTO INDIVIDUAL, 900 MICRON COLOR CODED BUFFERED TUBES.
5. THE TUBING WILL WITHSTAND A MINIMUM BEND RADIUS OF .51 INCHES (1.3 CM) WITHOUT ANY BREAKS OR KINKS.
6. DOUBLE-SIDED TAPE IS PROVIDED FOR SECURING THE BASE.
7. HEAT SHRINK TUBING IS PROVIDED FOR SECURING THE FIBER CABLE TO THE BASE.
8. 6 TUBING COLOR CODE PER BELLCORE STANDARDS: 1/BLUE, 2/ORANGE, 3/GREEN, 4/BROWN, 5/SLATE, 6/WHITE,
9. 12 TUBING COLOR CODE PER BELLCORE STANDARDS: 1/BLUE, 2/ORANGE, 3/GREEN, 4/BROWN, 5/SLATE, 6/WHITE, 7/RED, 8/BLACK, 9/YELLOW, 10/VIOLET, 11/ROSE, 12/AQUA
10. TUBE LENGTH IS 36".



PART NUMBER		F06CB, F012CB								
TITLE		6 TUBE FIBER FANOUT KIT 12 TUBE FIBER FANOUT KIT CUSTOMER DRAWING								
ITEM REVISION NAME		M00526JA/00								
DATASET FILE NAME		M00526JA_DC/00A								
 THIRD ANGLE PROJECTION										
MATERIAL				SEE NOTES						
DRAWN BY		DATE	CHK	SCALE	DRAWING NUMBER					
JBA		6-29-99		NONE	00526-04					
REV		DATE	BY	CHK	APR	DESCRIPTION	ECN	SHT 1 OF 1		SIZE
02A		6/19/17	JSP	JSP	SKH	B. UPDATED TO NEW PART DESIGN.	00526-04			A

A-SIZE CUSTOMER