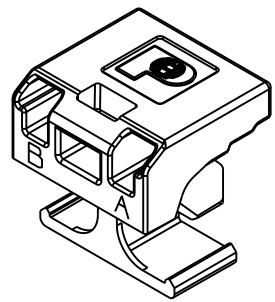
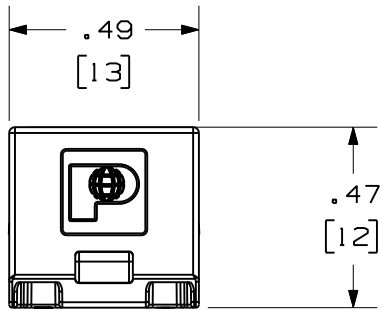
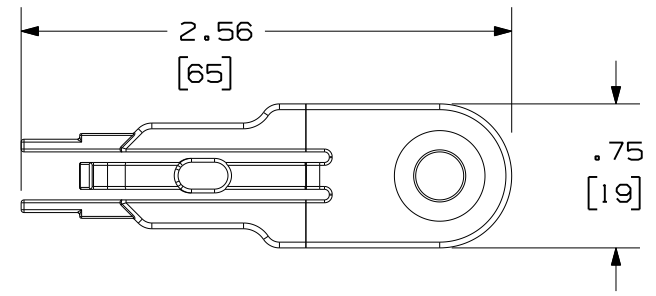
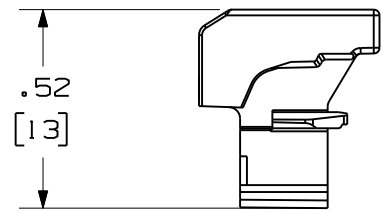
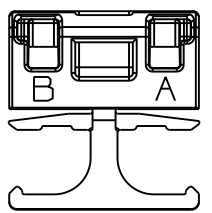



THIS COPY IS PROVIDED ON A RESTRICTED BASIS AND IS NOT TO BE USED IN ANY WAY DETRIMENTAL TO THE INTERESTS OF PANDUIT CORP.



- NOTES:
1. SEE CURRENT CATALOG FOR ADDITIONAL PART NUMBERS AND/OR COLORS.
 2. MINIMUM ORDER: 10 LOCK-IN DUPLEX CLIPS.
 3. ONE (1) REMOVAL TOOL (SHOWN BELOW) IS PROVIDED PER 10 LOCK-IN DUPLEX CLIPS ORDERED.
 4. SEE CATALOG FOR COMPLETE LIST OF PARTS APPLICABLE FOR USE WITH THIS PART.
 5. MATERIAL:
 - A. LOCK-IN CLIP: PLASTIC
 - B. REMOVAL TOOL: PLASTIC
 - C. ALL MATERIALS AND COMPONENTS USED MEET THE MATERIAL RESTRICTIONS OF RoHS, (EUROPEAN DIRECTIVE 2002/95/EC ON THE RESTRICTION OF HAZARDOUS SUBSTANCES) AS PROPOSED BY THE RoHS TECHNICAL ADAPTATION COMMITTEE.
 6. DIMENSIONS IN BRACKETS ARE METRIC



REMOVAL TOOL
SCALE: 1 : 1

										LC CONNECTOR LOCK-IN DUPLEX CLIP AND REMOVAL TOOL CUSTOMER DRAWING	
										 PANDUIT ™ CORP. TINLEY PARK, ILL 60477	
										ALL DIMENSIONS ARE GIVEN IN INCHES UNLESS OTHERWISE SPECIFIED. DIMENSIONAL TOLERANCES ARE: (.X) ±.03 (.XXX) ±.010 (.3) ±.015 ANGLE ±.03 0.8 ANGLES	
										DRAWING FILENAME M02793BF_DC/00A (MLCCL) SCALE 2 : 1 PART NO. MLCCL	
										THIRD ANGLE PROJECTION DRAWN BY MC DATE 07-11-08 CHECK'D pjt	
										REVIEW DRAWING NUMBERS DRAWING NO. 02793-02 SIZE A	
R	07-21-08	MC	pjt	RELEASED TO PRODUCTION	02793-02	pjt					
REV	DATE	BY	CHK	DESCRIPTION	ECN	R	CUST	SUP	OTH		