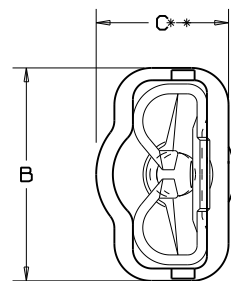
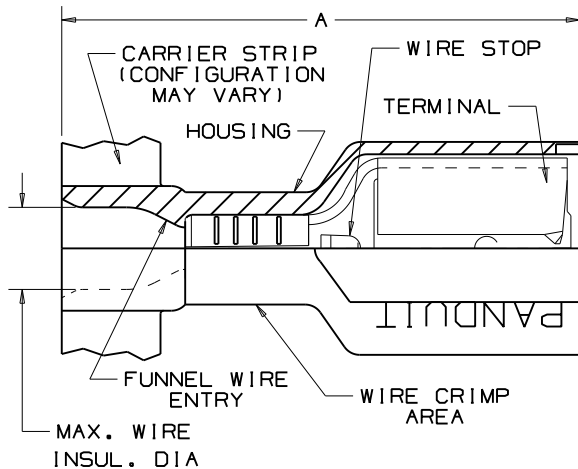


THIS COPY IS PROVIDED ON A RESTRICTED BASIS AND IS NOT TO BE USED IN ANY WAY DETRIMENTAL TO THE INTERESTS OF PANDUIT CORP.



NOTES:

1. UL LISTED AND CSA CERTIFIED FOR:
 - A. 600V MAX. VOLTAGE RATING.
 - B. 221°F (105°C) MAX. TEMP. RATING (CSA).
 - C. 257°F (125°C) MAX. TEMP. RATING (UL).
 - D. STRANDED COPPER WIRE ONLY.
2. DNF10-250FIB-2K IS RATED FOR 257°F (125°C) BY UL & CSA
3. PACKAGE QTY: 3K=3000 PIECES, 2K=2000 PIECES
CONTINUOUS MOLDED STRIP CARRIER
4. MATERIAL:
 - A. STAMPING-CDA 260 BRASS, TIN PLATED
 - B. HOUSING-TYPE 66 NYLON
5. DIMENSIONS IN BRACKETS ARE IN mm OR mm²
6. COLORS ARE TRANSLUCENT
7. NOTCHES DO NOT APPEAR ON PART# DNF18-250FIB-3K
8. DNF10-250FIB-2K IS UL APPROVED FOR USE WITH THE FOLLOWING WIRE COMBINATIONS: (2) #14, (2) #16, (2) #18
TWIST WIRES TOGETHER BEFORE CRIMPING
9. DNF10250FIBC-2K HAS HIGH WITHDRAWAL AND INSERTION CHARACTERISTICS (NOT UL/CSA)



LISTED 20H3 E78522
CERTIFIED LR31212

TOOL CHART
RECOMMENDED PRESS:
CP-871

| PART NUMBER | TAB SIZE | WIRE RANGE AWG (mm ²) | COLOR (note 6) | MAX. INSUL. | DIMENSIONS in. | | | STRIP LENGTH (+1/32 (0.8) -0) | TOOL CHART RECOMMENDED PRESS: CP-871 |
|----------------------|-------------------------------------|---|-------------------|----------------|----------------|----------------|----------------|-------------------------------------|--|
| | | | | | A ±.03 (.8) | B ±.02 (.5) | C ±.02 (.5) | | |
| ** DNF18-250FIB-3K | .250 X .032 (6,3 X 0,8) | 22-18 (1,5-1,0) | RED | .136 (3,45) | .84 (21,3) | .35 (8,9) | .22 (5,6) | 9/32 (7.1) | CA-800EZ / CA9 CA-800 APPLICATOR DIES |
| DNF18-205FIB-3K | .205/.187 X .032 (5,2/4,8 X 0,8) | 22-18 (1,5-1,0) | RED | .136 (3,45) | .78 (19,8) | .31 (7,9) | .22 (5,6) | " | CD-800-4 CD9-4A |
| DNF18-206FIB-3K | .205/.187 X .020 (5,2/4,8 X 0,5) | 22-18 (1,5-1,0) | RED | .136 (3,45) | .78 (19,8) | .31 (7,9) | .22 (5,6) | " | |
| DNF18-187FIB-3K | .187 X .032 (4,8 X 0,8) | 22-18 (1,5-1,0) | RED | .136 (3,45) | .78 (19,8) | .29 (7,4) | .16 (4,1) | " | |
| DNF18-188FIB-3K | .187 X .020 (4,8 X 0,5) | 22-18 (1,5-1,0) | RED | .136 (3,45) | .78 (19,8) | .29 (7,4) | .16 (4,1) | " | |
| DNF14-250FIB-3K | .250 X .032 (6,3 X 0,8) | 16-14 (1,5-2,5) | BLUE | .160 (4,06) | .84 (21,3) | .35 (8,9) | .22 (5,6) | " | CD-800-5 CD9-5A |
| DNF14-205FIB-3K | .205/.187 X .032 (5,2/4,8 X 0,8) | 16-14 (1,5-2,5) | BLUE | .160 (4,06) | .78 (19,8) | .31 (7,9) | .22 (5,6) | " | |
| DNF14-206FIB-3K | .205/.187 X .020 (5,2/4,8 X 0,5) | 16-14 (1,5-2,5) | BLUE | .160 (4,06) | .78 (19,8) | .31 (7,9) | .22 (5,6) | " | |
| DNF14-187FIB-3K | .187 X .032 (4,8 X 0,8) | 16-14 (1,5-2,5) | BLUE | .160 (4,06) | .78 (19,8) | .29 (7,4) | .18 (4,6) | " | |
| DNF14-188FIB-3K | .187 X .020 (4,8 X 0,5) | 16-14 (1,5-2,5) | BLUE | .160 (4,06) | .78 (19,8) | .29 (7,4) | .18 (4,6) | " | CD-800-13 CD9-13B |
| DNF10-250FIB-2K | .250 X .032 (6,3 X 0,8) | 12-10 (4,0-6,0) | YELLOW | .220 (5,59) | .96 (24,4) | .35 (8,9) | .23 (5,8) | 3/8 (9.5) | |
| *** DNF10-250FIBC-2K | .250 X .032 (6,3 X 0,8) | 12-10 (4,0-6,0) | YELLOW | .220 (5,59) | .96 (24,4) | .35 (8,9) | .23 (5,8) | 3/8 (9.5) | |

| | | | | | | | | |
|-----|-------|------|-----|---|-------------|------|----|---|
| 13 | 07.12 | BDK | LSM | ADDED DNF10-250FIBC-2K TO CHART AND NOTE #9 REVISED TOOL CHART | N41165BA-DC | VMB | | <p>TINLEY PARK, ILLINOIS</p> <p>REELSMART™ DISCO-FULLY INSULATED FEMALE DISCONNECTS .250 X .032, .205 X .032/.020, .187 X .032/.020</p> |
| 12 | 02/09 | BCT | | ADDED NOTE TO TWIST MULTIPLE WIRES TOGETHER PRIOR TO CRIMPING | | | | |
| 11 | 08/07 | SRB | | Removed notches from housing DNF18-250FIB-3K | | | | |
| 10 | 11/04 | KLFU | | UPDATED TOOL CHART PART NUMBERS | | | | |
| REV | DATE | BY | CHK | DESCRIPTION | ECN # | CUST | PM | DRAWN BY DSM |
| | | | | | | | | CHK'D SCALE NONE |
| | | | | | | | | DRAWING NO. N41165BA-DC |