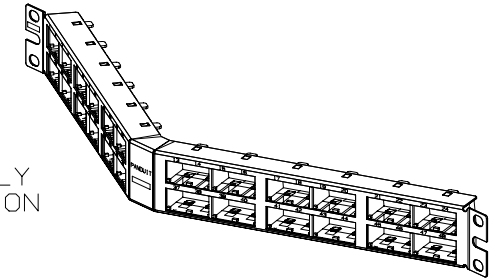
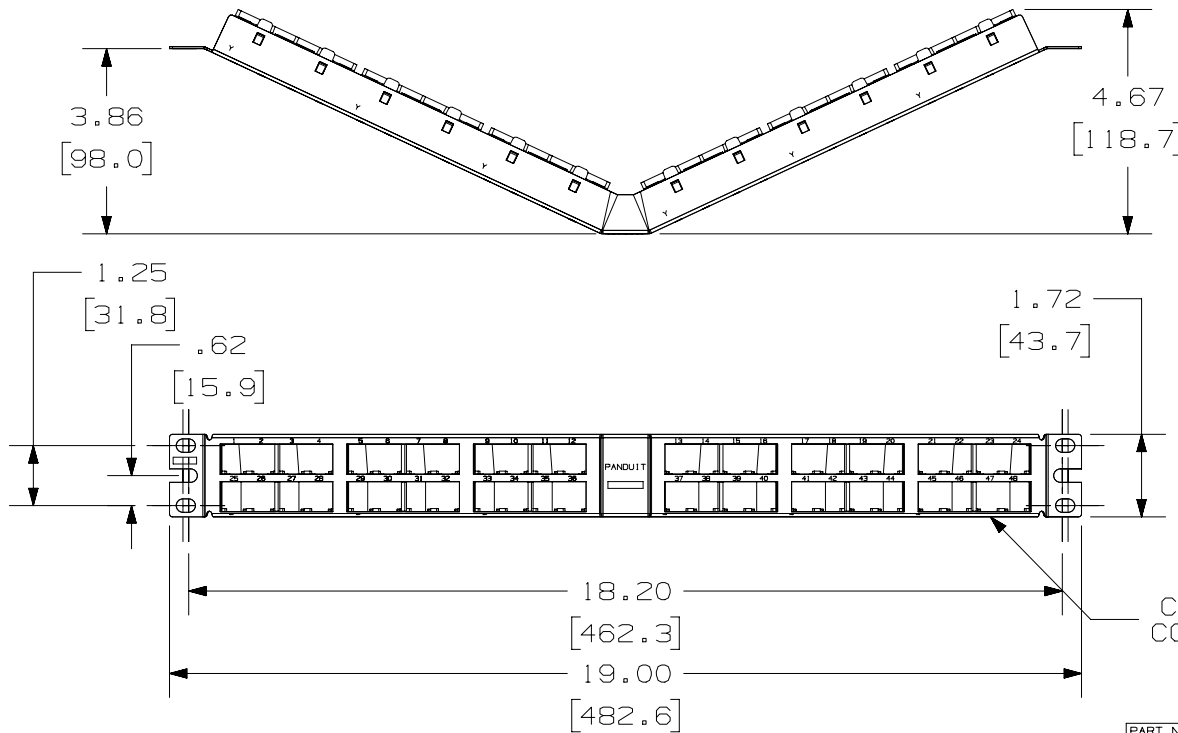


THIS COPY IS PROVIDED ON A RESTRICTED BASIS AND IS NOT TO BE USED IN ANY WAY DETRIMENTAL TO THE INTERESTS OF PANDUIT CORP.

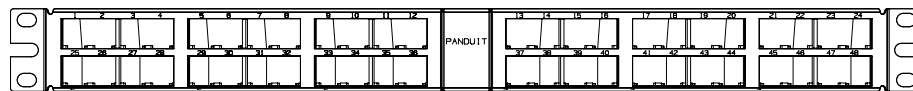
PANDUIT P/N	WEIGHT
CPPA48HDWBL Y CPPA48HDWWH	6.88 LB/10 PCS (3215.2.0 g/10 PCS)

NOTES:

- SEE CURRENT CATALOG FOR ADDITIONAL PART NUMBER SUFFIXES TO INDICATE COLOR AND OR PACKAGE QUANTITY.
- SEE CATALOG FOR COMPLETE LIST OF PARTS APPLICABLE FOR USE WITH THIS PART.
- PACKAGE CONTENTS:
 - (1) -48 PORT ANGLED STAMPING
 - (6) -8 POSITION FACEPLATE (ASSEMBLED TO PANEL)
 - (1) -SCREW KIT (INCLUDES FOUR #12-24 SCREWS)
- DIMENSIONS IN [] ARE IN METRIC.
- CPPA48HDWBL Y FABRICATED COMPONENTS ARE BLACK.
CPPA48HDWWH FABRICATED COMPONENTS ARE WHITE.



CPPA48HDWBL Y CONFIGURATION



CPPA48HDWWH CONFIGURATION
NOTE: NO RECTANGULAR BOXES

PART NUMBER CPPA48HDWBL Y / CPPA48HDWWH								
TITLE MINI-COM 48 PORT ANGLED HIGH DENSITY MODULAR PATCH PANEL								
CUSTOMER DRAWING								
ITEM REVISION NAME M02479DB/01								
DATASET FILE NAME M02479DB_DC82/01A								
UNLESS OTHERWISE SPECIFIED, DIMENSIONAL TOLERANCES ARE: IN [mm] .X ± .03 [.8] .XXX ± .010 [.3] .XX ± .03 [.8] ANGLES ±								
THIRD ANGLE PROJECTION								
DRAWN BY JSP	DATE 8-8-06							
CHK MJD	SCALE NONE							
MATERIAL: PANEL: 20 GAGE C.R.S FACEPLATE: ABS								
DRAWING NUMBER: 02479-082								
REV	DATE	BY	CHK	APR	DESCRIPTION	ECN	SHT 1 OF 1	SIZE A

3	11/12/18	BAME	KRKE	MMR	B. REMOVED METRIC SCREWS	02479-082
2	10/4/17	BAME	KRKE	MMR	ADDED P/N CPPA48HDWWH	02479-082
1	5/7/14	JSP	REFR	MMR	A. REVISED DRAWING TITLE BLOCK	02479-082
R	8-8-06	JSP	MJD	MJD	RELEASED TO PRODUCTION	02479-082