

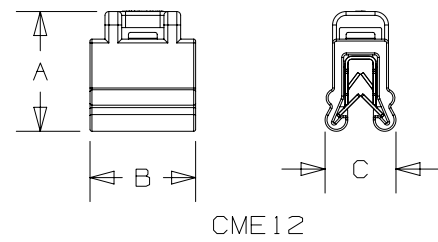
2

1

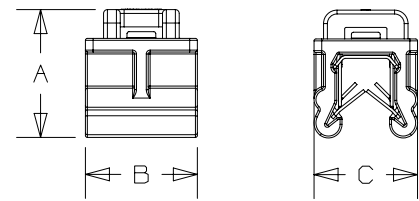
NOTES:

1. MATERIAL:
 - EDGE CLIP (-300)
 - i. MOLDED BODY: HEAT STABILIZED WEATHER RESISTANT NYLON 6.6
 - ii. METAL CLIP: STEEL, ZINC PLATED.
2. NO INSTALLATION TOOL IS NEEDED TO AFFIX THE EDGE CLIP TO PANEL EDGE; USE PANDUIT GTS-E OR EQUIVALENT TOOL FOR TENSION AND CUT OF THE CABLE TIE.

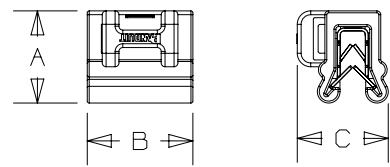
PART NUMBER	PANEL THICKNESS	USED WITH CABLE TIES	DIMENSIONS - IN (mm)			WEIGHT g/100 PIECES
			A	B	C	
CME12-M300	.028-.118 (.7mm-3mm)	M, I, S	.62 (15.7mm)	.55 (14.0mm)	.37 (9.4mm)	150
CMS12-M300			.48 (12.2mm)	.55 (14.0mm)	.47 (11.9mm)	140
CME24-M300	.118-.236 (3mm-6mm)		.67 (17.0mm)	.58 (14.7mm)	.54 (13.7mm)	199
CMS24-M300			.52 (13.2mm)	.58 (14.7mm)	.63 (16.0)	189



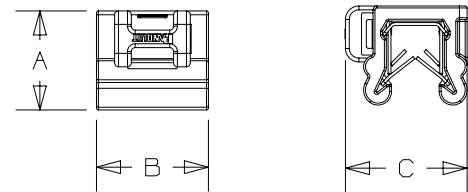
CME12



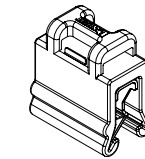
CME24



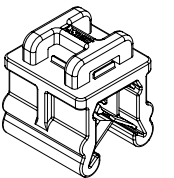
CMS12



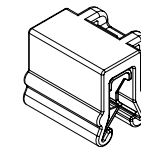
CMS24



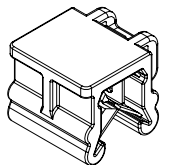
CME12



CME24



CMS12



CMS24

REV	DATE	BY	CHK	APR	DESCRIPTION	ECN
00	7/13/20	JHNU	MDS	RMHI	DRAWING RELEASED	084624

TITLE EDGE CLIP (SEE PART NUMBERS IN TABLE) CUSTOMER DRAWING	
ITEM REVISION NAME 01688NCE/00	PANDUIT
DATASET FILE NAME 01688NCE-DC/00	
UNLESS OTHERWISE SPECIFIED, DIMENSIONAL TOLERANCES ARE: IN [mm] .x ± .1 [2.54] .xxx ± .005 [.127] .xx ± .01 [.25] ANGLES ± 5°	
MATERIAL: SEE NOTES	
DRAWING NUMBER: 01688NCE-DC	
DRAWN BY JHNU	DATE 7/13/20
CHK MDS	SCALE FULL
SHT 1 OF 1	
SIZE B	

2

1

D10100DB/17