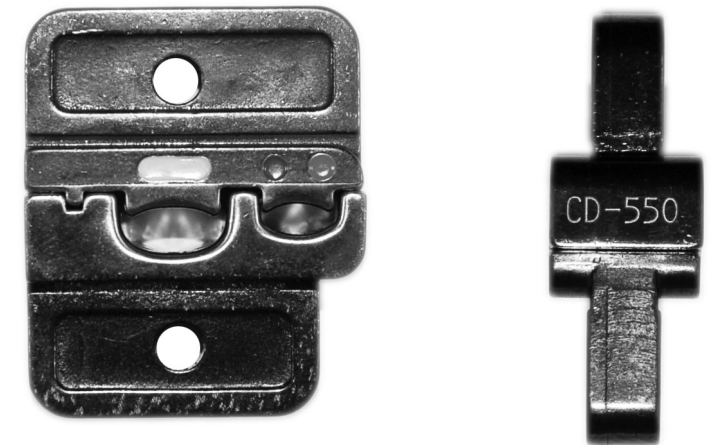
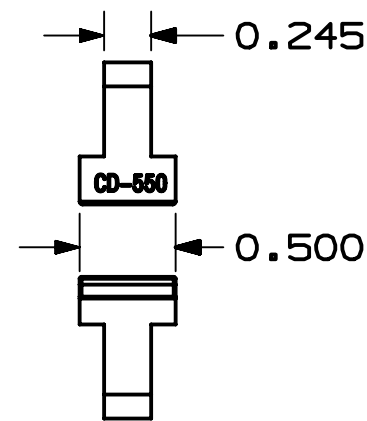
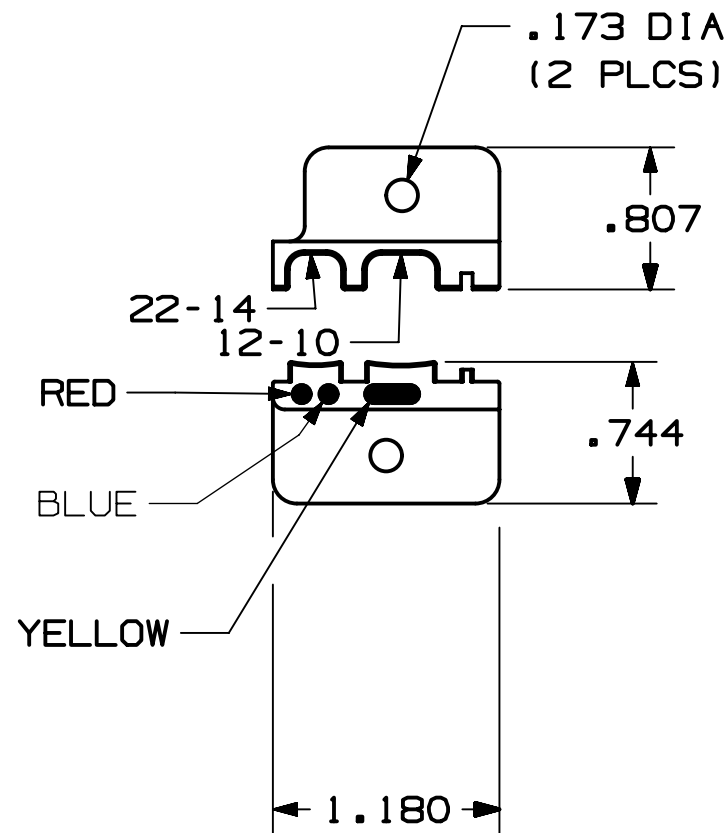


**NOTES, UNLESS OTHERWISE SPECIFIED:**

- PART MUST BE RoHS COMPLIANT.
- PANDUIT PART #: CD-550
- DIE SET TO BE LUBRICATED TO PREVENT CORROSION IN TRANSIT.
- DIE INSERT SET WEIGHT: 1.99 OZ. (55.33 GRAMS)
- CT-2550CH OR CD-550:  
DIE INSERT OR CRIMPING HEAD (NOT SHOWN) FOR INSTALLING THE FOLLOWING PANDUIT PRODUCTS:  
#22-#10 AWG (0,5-6,0 mm<sup>2</sup>) INSULATED TERMINALS AND SPLICES;  
AND SPECIFIC INSULATED DISCONNECTS.  
REDUCED CRIMP EFFORT ADVANTAGE FOR #12-#10 AWG (4,0-6,0 mm<sup>2</sup>)
- THE DIE INSERT AND/OR CRIMPING HEAD (NOT SHOWN) INSTALLATION INSTRUCTIONS CAN BE FOUND AT [WWW.PANDUIT.COM](http://WWW.PANDUIT.COM), SEARCH FOR CT-2525CH, CT-2550CH, CT-2570CH, CT-2500CH, CD-525, CD-550 OR CD-570.
- USED IN CT-2300 SERIES TOOLS, CT-2500CH AND CT-2550CH CRIMP HEADS.

22-14	12-10
0,5-2,5	4,0-6,0



POCKET SIZE	SHUT HT. PIN DIA mm [ IN ]
12-10	3.91-3.76 [ .154-.148 ]
22-14	2.74-2.59 [ .108-.102 ]

NOTE: PIN DIAMETER BASED UPON DIES BEING FULLY CLOSED

REV	DATE	BY	CHK	APR	DESCRIPTION	ECN
00	10-23-2019	JEH	BJPU	JADE	RELEASED	053328

TITLE <b>CUST DWG, CD-550 DIE SET</b>	
CUSTOMER DRAWING	
ITEM REVISION NAME R29572BA/00	<b>PANDUIT</b>
DATASET FILE NAME R29572BA/00_DS_TP29572B01	
UNLESS OTHERWISE SPECIFIED, DIMENSIONAL TOLERANCES ARE: IN [ mm ]	
.X ± .1 [ 2.54 ]	.XXX ± .005 [ .127 ]
.XX ± .01 [ .25 ]	ANGLES ± 1°
THIRD ANGLE PROJECTION	
DRAWING NUMBER: <b>TP29572B01</b>	
DRAWN BY JEH	DATE 10-23-2019
CHK BJPU	SCALE NONE
SHT 1 OF 1	
SIZE <b>B</b>	