

**PANDUIT**<sup>®</sup>

infrastructure for a connected world

smartzone™ G5

# Intelligent PDUs

Best in Class Outlet Density

---

Optimal Form Factors

---

Superior Reliability

---



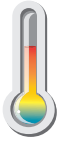


# SmartZone™ G5 iPDU Value Proposition



## Quality & Reliability

- 3-Year standard and 5-Year extended warranty



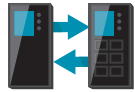
## High Temp

- Built with high-temperature grade premium components to withstand 60°C high temperature at full load for an extended period to provide high quality and reliability



## High Power Density

- Unique outlets design for high power density, and compact form-factors minimizing cabinet space



## Hot-Swappable and Upgradable

- Hot-Swappable Controller with large OLED display and high contrast ratio



## Hardened Security

- Enhanced security with (SNMPv3 and RESTful/TLS) with certificate-based advanced asymmetric encryption, validated and hardened with multiple security scanning tools



## 1G Redundant Network Access

- High Networking speed (1G) and with Redundant Network Access (RNA) for connectivity redundancy or for allowing separate Colo/Tenant Network connectivity



## Real-Time Monitor

- Real-time Monitoring of Power Environmental and Physical Access Security



## Environmental Plug & Play Sensors

- Variety of Plug-n-Play Environment and Access Security accessories through U-Ports



## Multi-Device WebGUI

- Enhanced User-Experience with/BYOD WebGUI and colored PDU, cords and cable ties



## Multi-Color

- A variety of colored PDU chassis, power cords and cable ties

## SmartZone™ G5 iPDU Families

### Monitored Input (MI) Series

Rack PDUs that have the ability for aggregate power monitoring to quickly identify potential power issues, and reclaim available or under-utilized power capacity.

### Monitored Switched (MS) Series

Rack PDUs that have the ability for aggregate power monitoring and outlet level switching capabilities for individual outlets or a group of outlets. Enabling power sequencing, rebooting equipment or restrict unauthorized use of individual outlets.

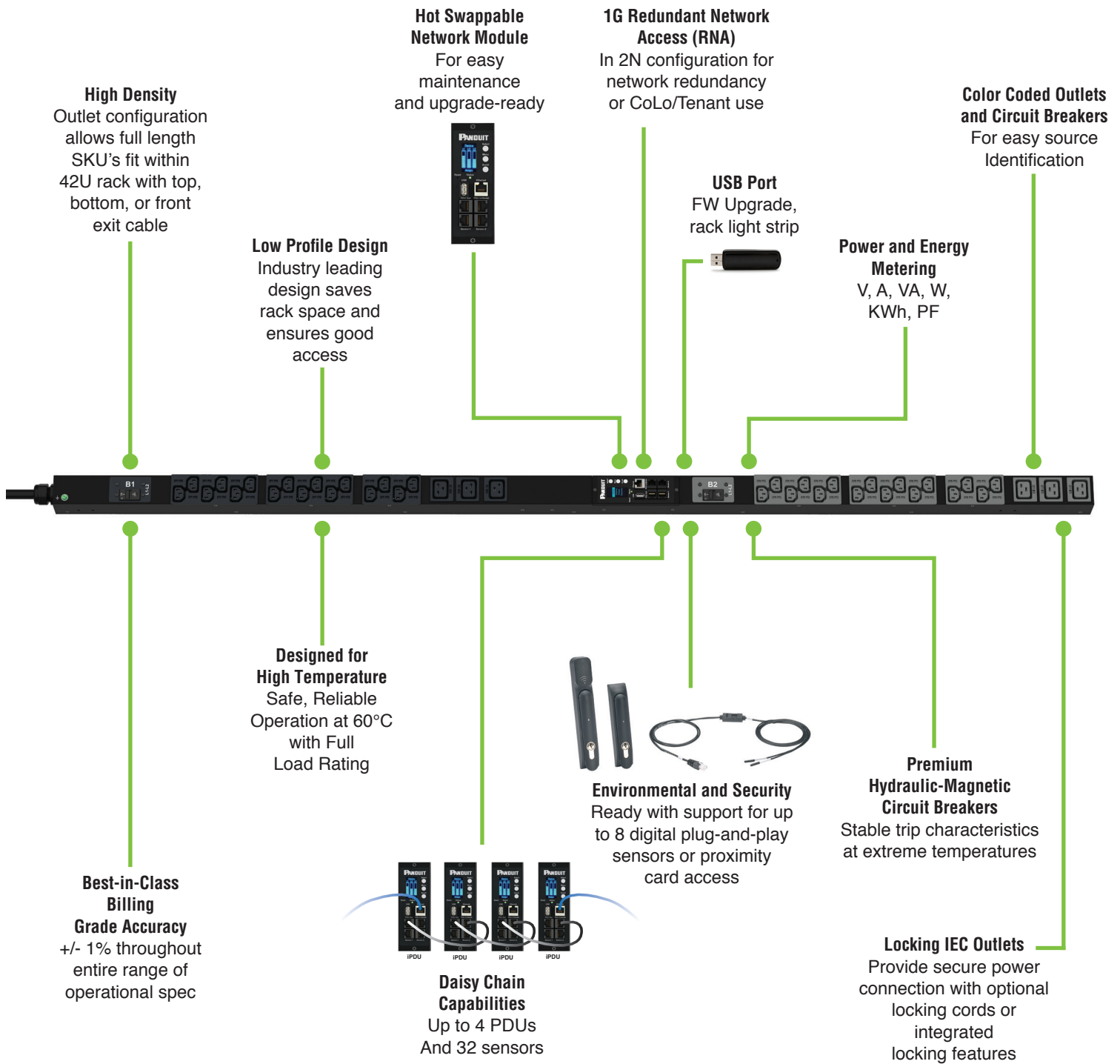
### Monitored per Outlet (MPO) Series

Rack PDUs that have the ability for outlet level power monitoring to quickly identify potential power issues, and reclaim available or under-utilized power capacity at the outlet level enabling the redeployment or decommissioning of individual servers to reclaim available or under-utilized power capacity.

### Monitored and Switched per Outlet (MSPO) Series

Rack PDUs that have the ability for outlet level power monitoring and outlet level switching capabilities for individual outlets or a group of outlets. Power monitoring at the individual outlet level provides actionable management data on the power consumption of each connected IT device enabling the redeployment or decommissioning of individual servers to reclaim available or under-utilized power capacity.

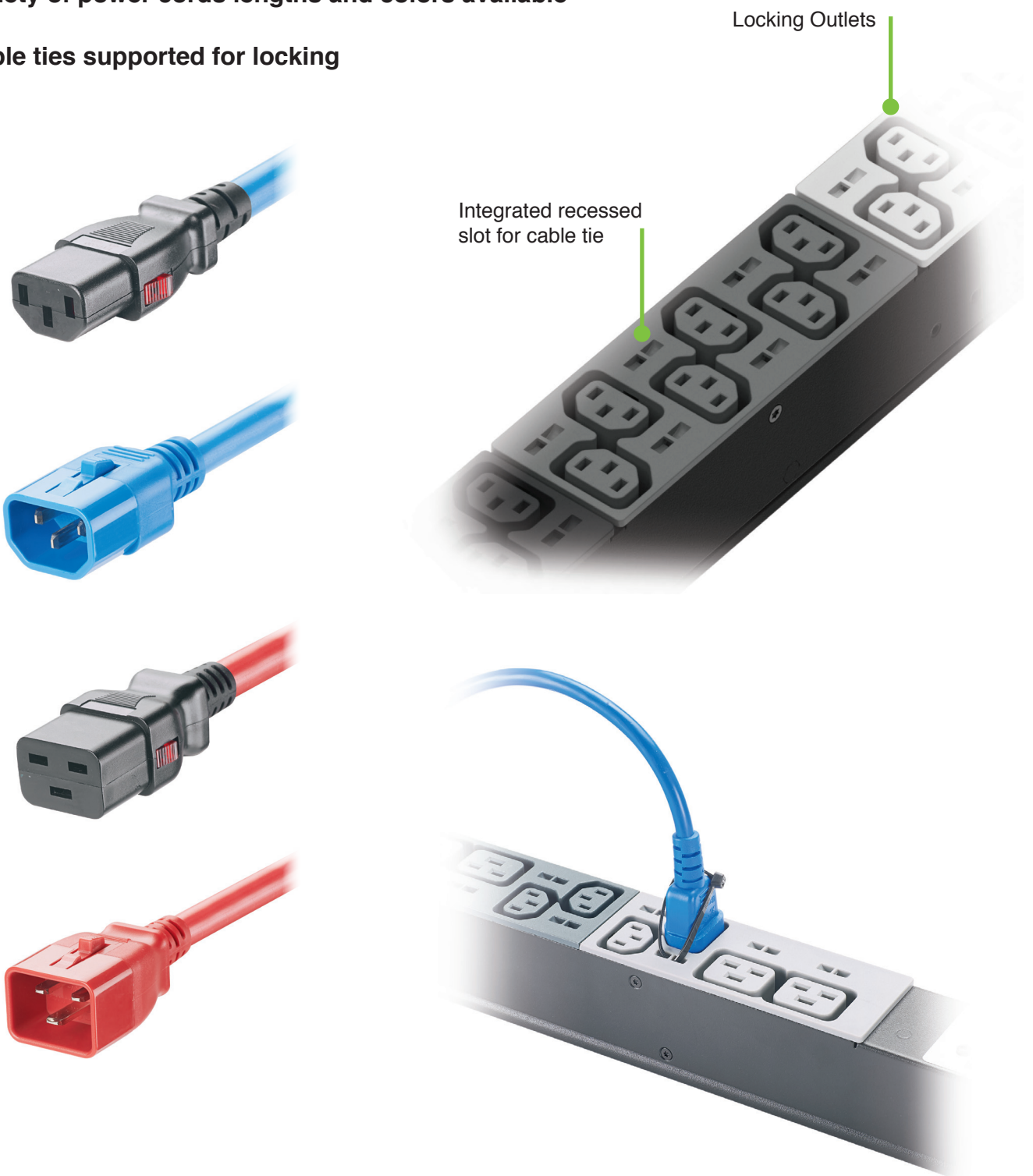
# iPDU Key Features



Product Features	Monitored Input (MI)	Monitored Switched (MS)	Monitored per Outlet (MPO)	Monitored & Switched per Outlet (MSPO)
<b>Design Features</b> <ul style="list-style-type: none"> <li>• Low profile, space saving design</li> <li>• Ultra low profile circuit breakers on most models</li> <li>• Adjustable tool-less mounting system</li> <li>• Color-coded receptacles</li> <li>• Locking IEC receptacles and locking power cord compatible</li> <li>• Field rewirable input cord for front or top mounting</li> </ul>	•	•	•	•
<b>PDU Energy Metering and Monitoring</b> <ul style="list-style-type: none"> <li>• PDU level watt-hour energy metering (kWh)</li> <li>• PDU level power measurements (W)</li> <li>• Input Phase level power measurements (V, A, VA, kWh, pf)</li> <li>• Circuit breaker level current measurements</li> <li>• High-accuracy, billing-grade metering capabilities</li> <li>• Embedded memory log to record/view/report historical data</li> <li>• User customizable alarm thresholds &amp; notifications</li> </ul>	•	•	•	•
<b>Outlet Level Switching</b> <ul style="list-style-type: none"> <li>• Remote On/Off power control by individual outlet</li> <li>• User-defined power-on time delay to sequence IT equipment</li> <li>• Automatic sequencing to avoid inrush current overload</li> <li>• Outlet level user security with assignable roles and user access</li> </ul>		•		•
<b>Outlet Level Energy Metering</b> <ul style="list-style-type: none"> <li>• Outlet level watt-hour energy metering (kWh)</li> <li>• Outlet level power measurements (V,A,VA, W, pf)</li> <li>• Outlet level information for Green Grid Level 3 PUE Calculations</li> </ul>			•	•
<b>Environmental &amp; Security Management</b> <ul style="list-style-type: none"> <li>• Optional Plug &amp; Play environmental sensors including temperature, humidity, dry contact and water leak</li> <li>• User customizable alarm thresholds and notifications</li> </ul>	•	•	•	•
<b>Physical Security Management</b> <ul style="list-style-type: none"> <li>• Rack access monitoring with door contact switch</li> <li>• User customizable alarm thresholds and notifications</li> <li>• Dry Contact accessory to activate strobe, beacon, or fan</li> </ul>	•	•	•	•
<b>Network Management and Local Display Interface</b> <ul style="list-style-type: none"> <li>• Largest-in-class, high-visibility, OLED display</li> <li>• Full featured network management and alerting capabilities supporting HTTP, HTTPS, SSH, Telnet, SNMP, FTP and email</li> <li>• Strong encryption, passwords, and advanced authorization options including local permissions, LDAP/S, and Active Directory</li> <li>• Daisy Chain up to 4 Rack PDUs and 32 environmental sensors through a single IP address</li> </ul>	•	•	•	•
<b>Circuit Breaker Status Monitoring</b> <ul style="list-style-type: none"> <li>• Active monitoring and alarming of circuit breaker on/off status</li> </ul>	•	•	•	•

## Locking Outlets and Cables

- Locking outlets compatible to V and W power cords
- W power cords provide locking at both end (PDU and equipment)
- Variety of power cords lengths and colors available
- Cable ties supported for locking





## G5 Intelligent Network Controller (iNC) (Hot Swappable)



iPDU

## Web GUI

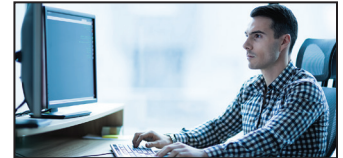


Login



Dashboard

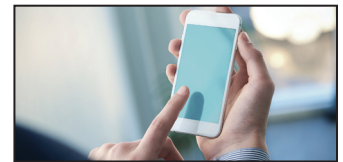
## Multi-Device Access



Desktop

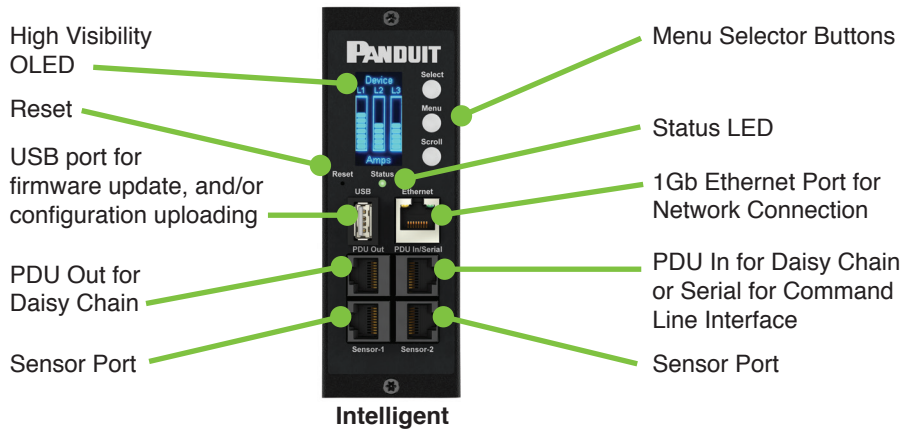


Tablet



Smartphone

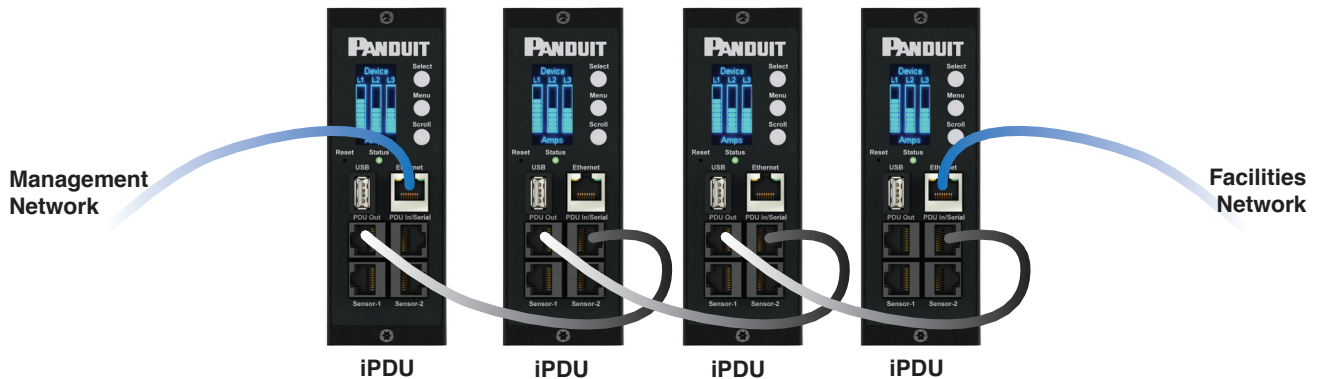
## iPDU



## Daisy Chain & Redundant Network Access\*

Allows two separate secure network connections to Daisy Chained PDU's

- Facilities Network for monitoring power usage and tracking data
- Manage and monitor up to 4 rack PDU's, using only a single IP address



\*RNA available using two iPDU configuration only

# Accessories – Environmental, Security and Power Cords

Plug and play style digital sensors (self-identifying electronics design)

## Environmental

- Temperature



- Temp + Humidity



- 3Temp + Humidity

- Rope Leak



- Spot Leak



- 3 Sensor Input Hub



- Dry Contact Input



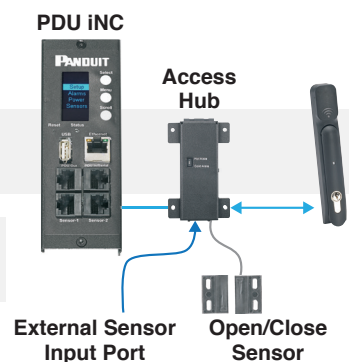
## Security

- Door Contact Switch



- Access hub for smart handle

- Auto Light Bar



## Power Cords

- Locking Power Cords (W-Lock and V-Lock Compatible)





The background of the advertisement features a blue gradient with light rays emanating from the top left. In the bottom left corner, there is a network diagram consisting of glowing blue nodes connected by thin lines. On the right side, a portion of a grey PDU (Power Distribution Unit) is visible, showing several electrical outlets.

# Smartzone™ G5 Intelligent PDUs

**PANDUIT®**

Panduit Corp.  
World Headquarters  
Tinley Park, IL 60487

800.777.3300

[www.panduit.com](http://www.panduit.com)