



Smart Control Panel Solutions

PANDUIT[®]

infrastructure for a connected world

Innovative Products for Reliable Control Panel Performance

1 Wiring Duct
Pages 5 – 8



2 Cable Ties
Page 9



3 Cable Accessories
Page 10 – 12



4 Terminals
Page 12



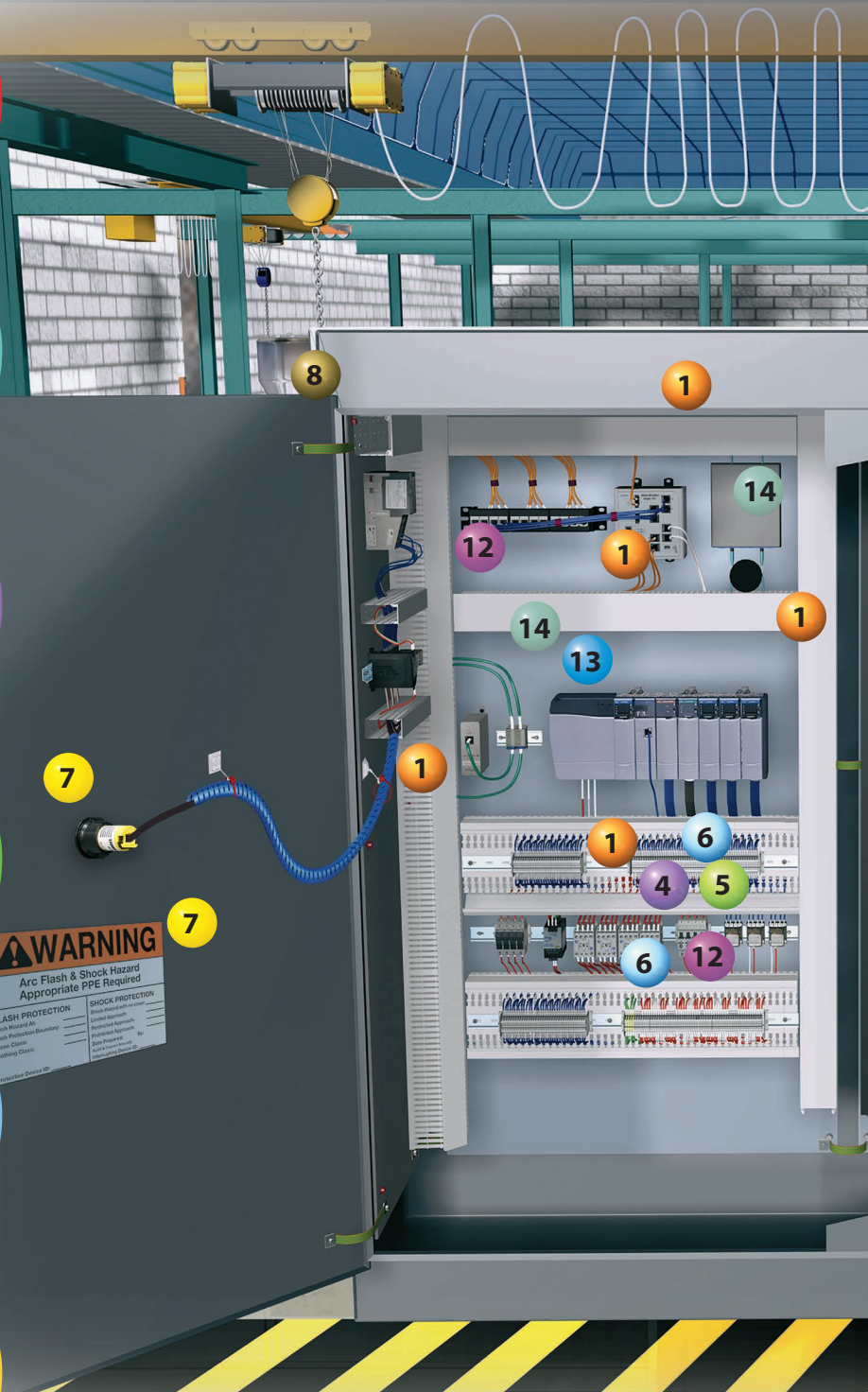
5 Ferrules
Page 13



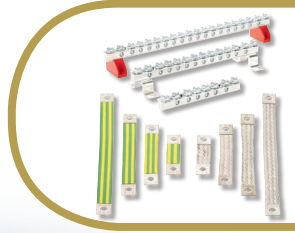
6 Identification
Pages 14 – 19, 26



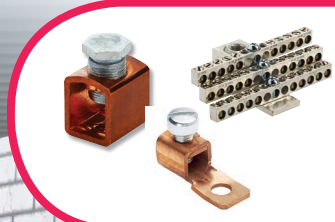
7 Safety
Page 20 – 21



Everything you need to enable space optimization, productivity, safety and security.



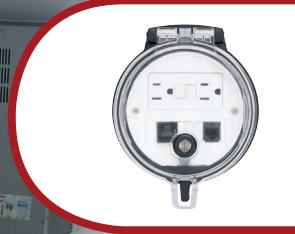
8 Grounding Connectors
Page 22



9 Power Circuit Wiring Components
Page 23



10 Abrasion Protection
Pages 24 – 25



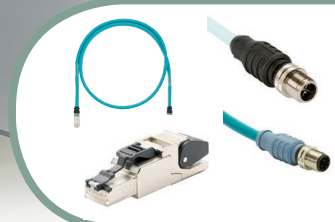
11 Data Access Port
Page 27



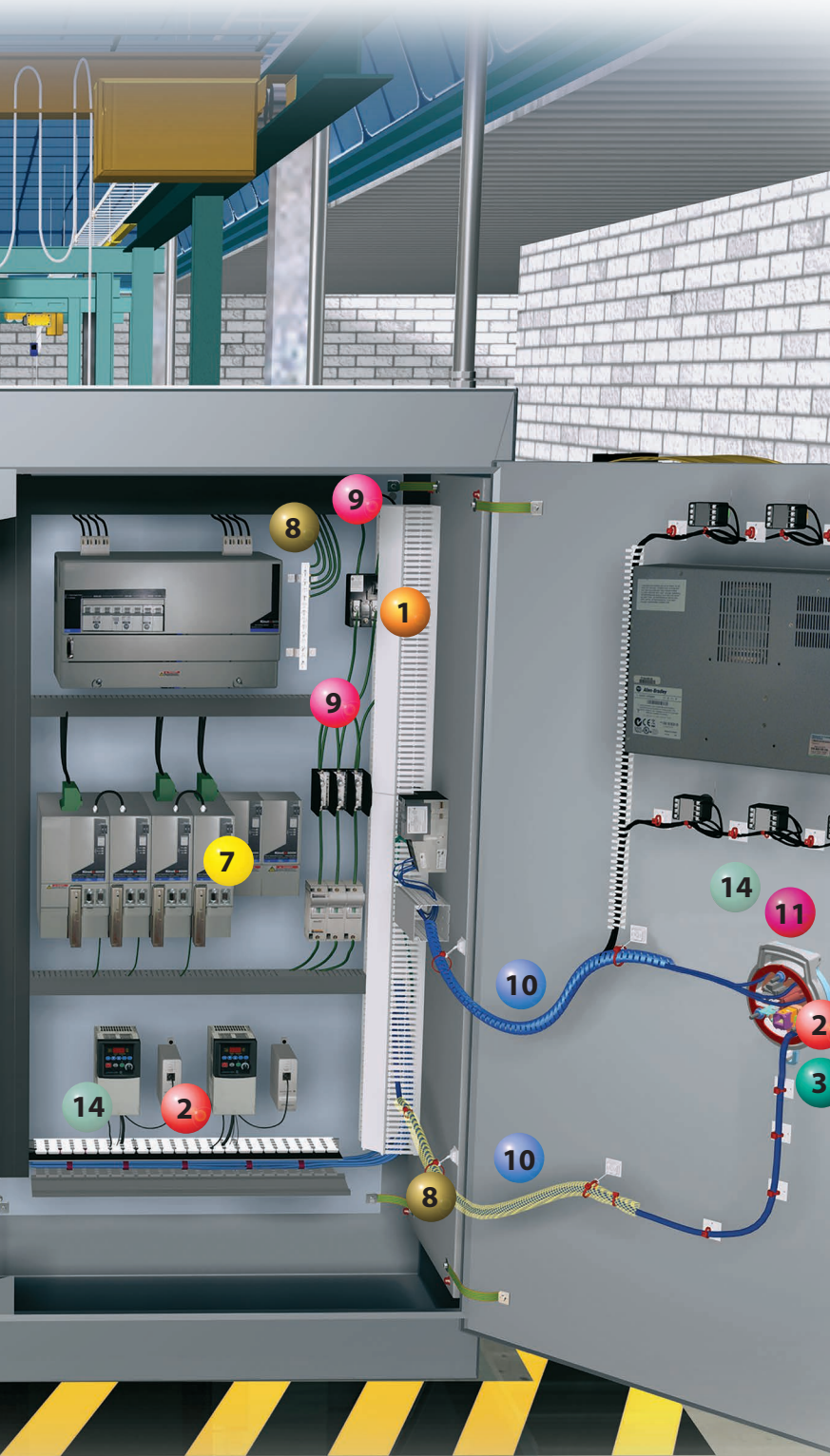
12 Network Security
Page 28



13 Industrial Uninterruptible Power Supply (UPS)
Page 29



14 Copper and Fiber Connectivity
Pages 29 – 33



Panduit Control Panel Solutions Deliver Reliable System Performance

Optimizing Space in the Control Panel (pages 5-8)

In manufacturing organizations, real estate is typically one of the biggest expenses associated with running the business. As a result, production facility managers are under pressure to manage their space in the most effective and efficient manner to minimize capital and operational expenses. This can mean placing as much equipment as possible into a given area in the facility, which challenges equipment designers and builders to reduce the size and footprint of the machines they create. This, in turn, challenges the controls engineers to design and build control panels within a smaller footprint or fit more equipment into an existing space. There are many challenges associated with designing smaller control panels. Considerations for cable segregation, thermal management, cable entry, electromagnetic interference (EMI), cable bend radius and space for future expansion must be addressed when attempting to reduce the size of control panels.

Improving Productivity in Control Panel Applications (pages 9-19)

Efficiency. Output. Yield. Productivity. Businesses today insist on accomplishing as much as possible in as little time as possible. Products and processes that maximize uptime, reduce costs and meet production deadlines are in high demand as machine designers and builders race to remain competitive and deliver upon their customer's expectations.

Mitigating Security and Safety Risks (pages 20-28)

Integrating the security element into equipment and enclosures is essential as it allows design/controls engineers to create multiple layers of security that work together to protect the network and equipment without retrofitting or replacing components. Physical security solutions that help control access to automation devices can be effective additions to other layers of security employed in contemporary control systems. Panduit offers diverse and complete solutions for protecting equipment from intentional and unintentional security threats to add value to their customers' physical security needs.

While safety in the workplace is everyone's responsibility, it is particularly crucial that facility managers, electricians, and control panel engineers take all recommended precautions to ensure a safe environment for employees. These precautions not only prevent harm and danger, but also impact the bottom line, both directly and indirectly. Panduit has developed a wide range of solutions designed to protect workers against mechanical, electrical and hazardous situations, as well as products that provide multiple layers of security that work together to protect equipment.

The Connected Control Panel (pages 29-33)

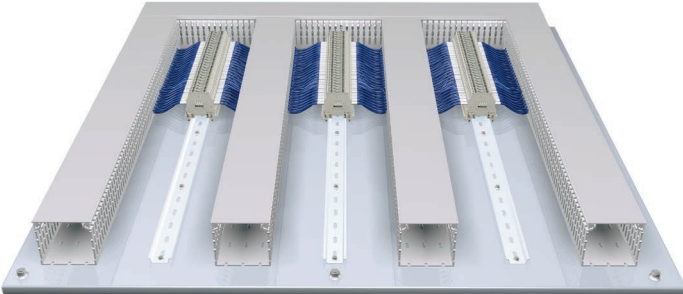
The manufacturing plant floor is undergoing dramatic changes that require businesses to adopt new strategies to fully utilize Industrial Ethernet through things such as advanced motor controls and control architectures to improve efficiencies, increase productivity and drive out costs.

The increasing number of Ethernet nodes on the plant floor and the need to measure productivity in real-time are frequent challenges. Greater use of Ethernet connected advanced controllers, computers and high-speed motion control and power electronics require new design strategies beyond traditional panel selection and layout to ensure the automation systems deliver improved network performance and accommodate an increasing use of Industrial Ethernet managed switches and networked devices. Copper and fiber connectivity for harsh environment deployments, DIN rail mountable patching devices, Motor Control Center (MCC) Connectivity, and Uninterruptible Power Supplies are integrated into the control panel design for a complete network Connected Control Panel.

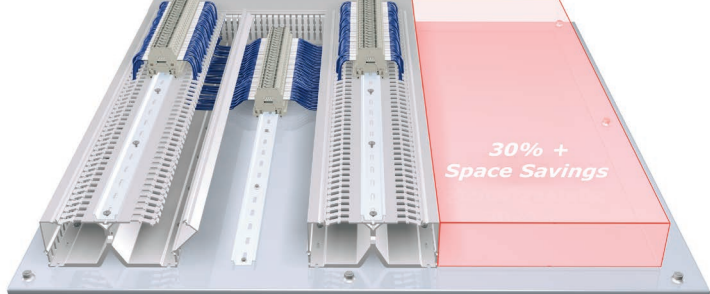
Space Optimization

Regardless of the challenges encountered, Panduit solutions will provide maximum optimization of the limited space inside a control panel. Optimized control systems increase design flexibility and organization while providing robust, environment-rated solutions that ensure ideal performance, availability and uptime.

Panduct® PanelMax™ DIN Rail Wiring Duct

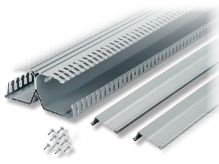


Conventional wiring duct panel layout



DIN rail wiring duct panel layout with 30%+ space savings

30%+
Space Savings



DRD



DRDWR



DRDCS

Part Number	Description	Std. Pkg. Qty.
DRD22LG6	2" height PanelMax™ DIN Rail Wiring Duct with dual wiring channels. Base, covers, and DIN rail fasteners included. Length 6'.	6 Ft.
DRD33LG6	3" height PanelMax™ DIN Rail Wiring Duct with dual wiring channels. Base, covers, and DIN rail fasteners included. Length 6'.	6 Ft.
DRD44LG6	4" height PanelMax™ DIN Rail Wiring Duct with dual wiring channels. Base, covers, and DIN rail fasteners included. Length 6'.	6 Ft.
DRDC2LG6	2" Replacement Cover for PanelMax™ Rail Duct. Length 6'.	6 Ft.
DRDC3LG6	3" Replacement Cover for PanelMax™ Rail Duct. Length 6'.	6 Ft.
DRDC4LG6	4" Replacement Cover for PanelMax™ Rail Duct. Length 6'.	6 Ft.
DRDSF-C	Replacement DIN rail fasteners for PanelMax™ DIN Rail Wiring Duct.	100 Pcs.
DRDWR2-X	2" wire retainer for PanelMax™ DIN Rail Wiring Duct, Black. 10 per package.	10 Pcs.
DRDWR3-X	3" wire retainer for PanelMax™ DIN Rail Wiring Duct, Black. 10 per package.	10 Pcs.
DRDWR4-X	4" wire retainer for PanelMax™ DIN Rail Wiring Duct, Black. 10 per package.	10 Pcs.
DRDCS2-X	2" corner strip for PanelMax™ DIN Rail Wiring Duct. 10 per package.	10 Pcs.
DRDCS3-X	3" corner strip for PanelMax™ DIN Rail Wiring Duct. 10 per package.	10 Pcs.
DRDCS4-X	4" corner strip for PanelMax™ DIN Rail Wiring Duct. 10 per package.	10 Pcs.

Product is sold base and cover together in 6 ft, lengths. Part numbers shown in LG (Light Gray); also available in WH (White).

DIN rail and DIN component compatible

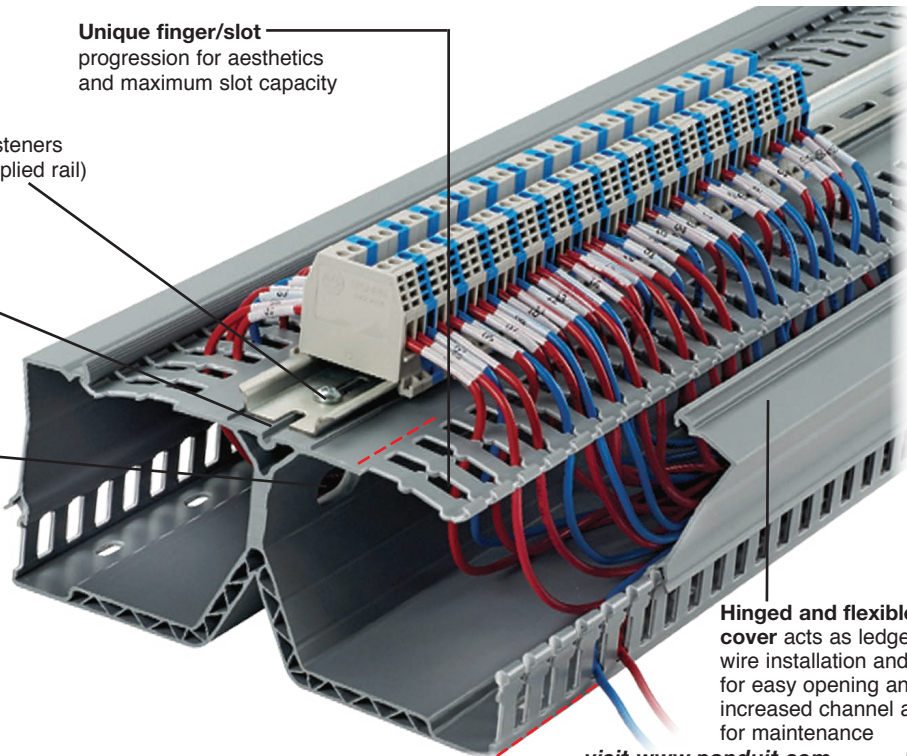
Integrated fastener slot
accepts supplied screw fasteners to install DIN rail (user supplied rail)

Locating ribs
align and center DIN rail during installation

Pass-through holes
shorten the wiring path between components on the same DIN rail

Score lines allow finger removal and base sidewall removal with sidewall notching tool

Unique finger/slot
progression for aesthetics and maximum slot capacity



Hinged and flexible cover acts as ledge for wire installation and flexes for easy opening and increased channel access for maintenance

Space Optimization

Panduct® PanelMax™ Corner Wiring Duct



PanelMax™ Corner Wiring Duct is used in the vertical corners of medium to large electrical control panels (with both side and back panels) to route, conceal, and protect electrical wiring.



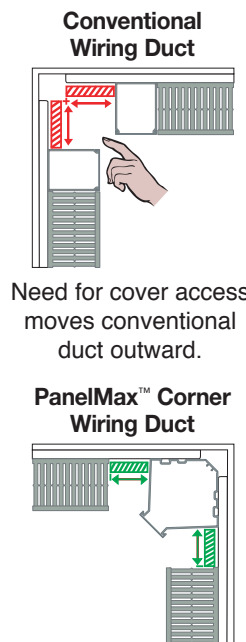
Part Number	Part Description	W x H In.	W x H (mm)	Cover Part Number	Std. Pkg. Qty.
CWD2LG6	One-piece corner wiring duct for use with 2" height wiring duct. Cover sold separately.	3.35 x 2.57	85.0 x 65.3	C2LG6	6 Ft.
CWD3LG6	One-piece corner wiring duct for use with 3" height wiring duct. Cover sold separately.	4.40 x 3.57	111.8 x 90.7	C2LG6	6 Ft.
CWD4LG6	One-piece corner wiring duct for use with 4" height wiring duct. Cover sold separately.	5.33 x 4.58	135.3 x 115.7	C2LG6	6 Ft.

Part numbers shown in LG (Light Gray); also available in WH (White).



Part Number	Part Description	Screw or Fastener Required	Std. Pkg. Qty.
CDCLP2	Quick mounting clip for installing CWD2 corner wiring duct.	#10 – 32 x 1/4 (user supplied)	16 Pcs.
CDCLP3	Quick mounting clip for installing CWD3 corner wiring duct.	#10 – 32 x 1/2" (user supplied)	16 Pcs.
CDCLP4	Quick mounting clip for installing CWD4 corner wiring duct.	#10 – 32 x 1/2" (user supplied)	16 Pcs.
D4H6	4" height solid divider wall for use with CWD2, CWD3, or CWD4 corner wiring duct.	Installs directly to PanelMax™ Corner Wiring Duct base	6 Ft.
SD2H6	2" height slotted divider wall for use with CWD2, CWD3, or CWD4 corner wiring duct.	Installs directly to PanelMax™ Corner Wiring Duct base	6 Ft.
SD3H6	3" height slotted divider wall for use with CWD2, CWD3, or CWD4 corner wiring duct.	Installs directly to PanelMax™ Corner Wiring Duct base	6 Ft.
SD4H6	4" height slotted divider wall for use with CWD2, CWD3, or CWD4 corner wiring duct.	Installs directly to PanelMax™ Corner Wiring Duct base	6 Ft.

Examples of Space Savings Using 48" W x 24" D x 60" H Enclosure



Need for cover access moves conventional duct outward.

Gains up to 5ft² mounting space per enclosure (over 72" height)

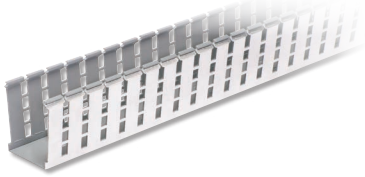
Description	Conventional	With PanelMax™ Corner Wiring Duct	Benefits
Sub-Panel Space Savings			
Usable sub-panel mounting area (assumes 60"H enclosure)	28.7 ft. ²	32.2 ft. ²	Provides 12% more space, maximizing space utilization for more panel components and greater flexibility in panel layout design
Footprint Space Savings			
Footprint width x depth (square footage)	48" x 24" (8 ft. ²)	43.5" x 21.7" (6.6 ft. ²)	Provides 12% more space, maximizing space utilization for more panel components and greater flexibility in panel layout design
Floor space cost**	\$560	\$462***	18% reduction in enclosure size; ideal for space constrained environments
Enclosure and sub-panel costs	\$3,700	\$3,050***	\$650 in enclosure savings

**Based on \$70/square foot industrial facility construction cost.

***This is a representative application. Actual savings dependent on wiring duct size, component layout and enclosure size and type. Footprint savings is based on commercially available enclosures and may not be achievable in some applications.

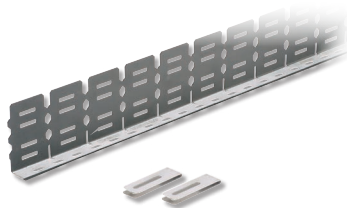
Panduct® PanelMax™ Shielded Wiring Duct and Noise Shield

Panduit noise shielding solution is designed to reduce the effects of EMI/RFI (electromagnetic interference, radio frequency interference) and provide space optimization within industrial control panels. The shielding provides up to 20dB reduction in noise, or 90% noise voltage reduction (NVR), which is equivalent to 6 inches of air spacing, generating valuable panel space savings of 40% or more.



Part Number	Description	Std. Pkg. Qty.
G2X2LG6EMI	2" x 2" PanelMax™ Shielded Wiring Duct; 6' length. Foil metal finish includes anti-oxidizing paste. Cover sold separately.	12 Ft.
G2X3LG6EMI	2" x 3" PanelMax™ Shielded Wiring Duct; 6' length. Foil metal finish includes anti-oxidizing paste. Cover sold separately.	12 Ft.
G2X4LG6EMI	2" x 4" PanelMax™ Shielded Wiring Duct; 6' length. Foil metal finish includes anti-oxidizing paste. Cover sold separately.	12 Ft.

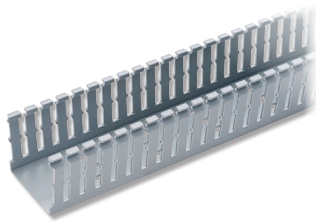
Use C2LG6 cover with shielded wiring duct. Standard package quantity in feet.



Part Number	Description	Std. Pkg. Qty.
SD2EMI	EMI noise shield kit for 2" height Panduit wiring duct; two 3' sections, bonding clips, and anti-oxidizing paste.	1
SD3EMI	EMI noise shield kit for 3" height Panduit wiring duct; two 3' sections, bonding clips, and anti-oxidizing paste.	1
SD4EMI	EMI noise shield kit for 4" height Panduit wiring duct; two 3' sections, bonding clips, and anti-oxidizing paste.	1
SDCLIP	Noise shield replacement bonding clips – 2 clips.	1

Panduct® Type F Narrow Slot Wiring Duct

Narrow slot/finger design provides more slots to fit the spacing of high-density terminal blocks and other hardware. Cover sold separately.



Part Number	Duct Size (W x H)		Slot Width		Cover Part Number	Std. Pkg. Qty.	Base Ctn. Qty.	Cover Ctn. Qty.
	In.	mm	In.	mm				
F1X1LG6	1.25 x 1.13	32.0 x 28.7	0.20	5.0	C1LG6	6	120	120
F1X1.5LG6	1.25 x 1.62	32.0 x 41.1	0.20	5.0	C1LG6	6	120	120
F1X2LG6	1.25 x 2.12	32.0 x 53.8	0.20	5.0	C1LG6	6	120	120
F1X3LG6	1.25 x 3.13	32.0 x 79.4	0.20	5.0	C1LG6	6	120	120
F1X4LG6	1.25 x 4.10	32.0 x 104.1	0.20	5.0	C1LG6	6	60	120
F1.5X2LG6	1.75 x 2.12	44.5 x 53.8	0.20	5.0	C1.5LG6	6	120	120
F1.5X3LG6	1.75 x 3.12	44.5 x 79.2	0.20	5.0	C1.5LG6	6	120	120
F1.5X4LG6	1.75 x 4.10	44.5 x 104.1	0.20	5.0	C1.5LG6	6	60	120
F2X4LG6	2.25 X 4.10	57.2 X 104.1	0.20	5.0	C2LG6	6	60	120
F2X5LG6	2.25 x 5.10	57.2 x 129.5	0.20	5.0	C2LG6	6	60	120
F3X4LG6	3.25 X 4.10	82.6 X 104.1	0.20	5.0	C3LG6	6	60	120
F3X5LG6	3.25 x 5.10	82.6 x 129.5	0.20	5.0	C3LG6	6	60	120
F4X4LG6	3.25 X 5.10	82.6 X 129.5	0.20	5.0	C4LG6	6	60	120
F4X5LG6	4.25 x 5.10	108.0 x 129.5	0.20	5.0	C4LG6	6	60	120

Space Optimization

Panduct® Type G Wide Slot Wiring Duct

Wide slot/finger design provides greater sidewall rigidity and can be used with a wide range of wire bundle sizes. Cover sold separately.



Part Number	Duct Size (W x H)*		Slot Width		Cover Part Number	Std. Pkg. Qty.	Base Ctn. Qty.	Cover Ctn. Qty.
	In.	mm	In.	mm				
G1X1LG6	1.25 x 1.12	32.0 x 28.4	0.31	7.9	C1LG6	6	120	120
G1X1.5LG6	1.25 x 1.62	32.0 x 41.1	0.31	7.9	C1LG6	6	120	120
G1X2LG6	1.25 x 2.12	32.0 x 53.8	0.31	7.9	C1LG6	6	120	120
G1X3LG6	1.25 x 3.12	32.0 x 79.2	0.31	7.9	C1LG6	6	120	120
G1X4LG6	1.25 x 4.10	32.0 x 104.1	0.31	7.9	C1LG6	6	60	120
G1.5X2LG6	1.75 x 2.12	44.5 x 53.8	108.0	129.5	C1.5LG6	6	120	120
G1.5X3LG6	1.75 x 3.12	44.5 x 79.2	0.31	7.9	C1.5LG6	6	120	120
G1.5X4LG6	1.74 x 4.10	44.5 x 104.1	0.31	7.9	C1.5LG6	6	60	120
G2X4LG6	2.25 x 4.10	57.2 X 104.1	0.31	7.9	C2LG6	6	60	120
G2X5LG6	2.25 x 5.10	57.2 x 129.5	0.38	9.7	C2LG6	6	60	120
G3X4LG6	3.25 x 4.10	82.6 x 104.1	0.31	7.9	C3LG6	6	60	120
G3X5LG6	3.25 x 5.10	82.6 x 129.5	0.38	9.7	C3LG6	6	60	120
G4X4LG6	4.25 x 4.10	108.0 x 104.1	0.31	7.9	C4LG6	6	60	120
G4X5LG6	4.25 x 5.10	108.0 x 129.5	0.38	9.7	C4LG6	6	60	120

Panduct® Installation Tools

Easily install Panduct® Products with the bench mount or hand-held duct cutting tool.



Part Number	Part Description	Std. Pkg. Qty.
DCT	Hand-held duct cutting tool.	1
DFCT	Hand-held duct finger cutting tool.	1
DNT-100	Hand-held sidewall notching tool.	1
NR1-M	Nylon rivet for use with TNR rivet tool.	1000
PBDCT*	Panduit bench-mount duct cutting tool. Cuts slotted wiring ducts and wiring duct covers with up to 6" width and up to 5" height. Full 78.74" (2 meter) measuring scale. Includes safety guarding.	1
TNR	Hand-held nylon rivet installation tool.	1

*If ordering PBDCT outside the U.S., these part numbers must both be ordered: PBDCT-B and PBDCT-M.

Productivity

Panduit has never stopped improving, advancing or reinventing its products to meet modern challenges. We are committed to providing manufacturers with the keys to efficient and effective productivity. Panduit products tap into a 60-year legacy of knowledge, experience, and innovation to provide high quality tools and products that allow designers and builders to be more competitive, more productive, more flexible and, more profitable.

Cable Ties

Fasten, bundle, clamp and manage wiring with cable ties and tools designed to speed installation and improve operator safety.



Part Number	Description	Std. Pkg. Qty.
BT1M-C	Dome-Top® barb ty cable tie, miniature cross section, 4.0 (102mm) length, nylon 6.6, natural, standard package.	100 Pcs.
BT1.5M-M	Dome-Top® barb ty cable tie, miniature cross section, 6.3 (160mm) length, nylon 6.6, natural, bulk package.	1000 Pcs.
BT2I-M0	Dome-Top® barb ty cable tie, intermediate cross section, 8.0 (203mm) length, weather resistant nylon 6.6, black, bulk package.	1000 Pcs.
BT2M-M	Dome-Top® barb ty cable tie, miniature cross section, 7.9 (201mm) length, nylon 6.6, natural, bulk package.	1000 Pcs.
BT2S-C	Dome-Top® barb ty cable tie, standard cross section, 8.0 (203mm) length, nylon 6.6, natural, standard package.	100 Pcs.
BT3I-M	Dome-Top® barb ty cable tie, intermediate cross section, 11.3 (287mm) length, nylon 6.6, natural, bulk package.	1000 Pcs.
BT3S-C0	Dome-Top® barb ty cable tie, standard cross section, 12.0 (305mm) length, weather resistant nylon 6.6, black, standard package.	100 Pcs.
BT4S-M0	Dome-Top® barb ty cable tie, standard cross section, 15.1 (384mm) length, weather resistant nylon 6.6, black, bulk package.	1000 Pcs.
PLA2S-A-C	Combination adhesive mount/cable tie; White; mounting base 1.0" x 0.9" (25mm x23mm); nylon 6.6.	100 Pcs.
PLM1M-C	Panduit® Marker Tie, wrap, Miniature cross section, 3.9" (99mm) length, 0.26" x 0.95" (6.6 x 24.1mm) marker write-on area, nylon 6.6, Natural.	100 Pcs.
PLT1M-C	Panduit® Locking Tie, Miniature cross section, 3.9" (99mm) length, nylon 6.6, Natural.	100 Pcs.
PLT1.5M-M	Panduit® locking tie, miniature cross section, 5.6 (142mm) length, nylon 6.6, natural, bulk package.	1000 Pcs.
PLT2I-M	Panduit® locking tie, intermediate cross section, 8.0 (203mm) length, nylon 6.6, natural, bulk package.	1000 Pcs.
PLT2M-C	Panduit® Locking Tie, Miniature cross section, 8.0" (203mm) length, nylon 6.6, Natural.	100 Pcs.
PLT2S-C	Panduit® Locking Tie, Standard cross section, 7.4" (188mm) length, nylon 6.6, Natural.	100 Pcs.
PLT3I-M0	Panduit® locking tie, intermediate cross section, 11.4 (290mm) length, weather resistant nylon 6.6, black, bulk package.	1000 Pcs.
PLT3S-C	Panduit® locking tie, standard cross section, 11.5 (292mm) length, nylon 6.6, natural, standard package.	100 Pcs.
PLT4S-C0	Panduit® locking tie, standard cross section, 14.5 (368mm) length, weather resistant nylon 6.6, black, standard package.	100 Pcs.
GTS-E	Ergonomic cable tie hand tool; installs Subminiature, Miniature, Intermediate, Standard cable tie cross sections; material: impact resistant resin.	1 Pc.

Representative list only. Please visit www.panduit.com for full offering.

Adhesive Cable Tie Mounts

Panduit adhesive backed cable tie mounts are a product the control panel industry depends upon to secure wires and cables where mounting holes cannot be drilled. The adhesive backed mounts use premium Panduit adhesive for a long-term reliable bond. Multiple sizes, colors, and adhesive options allow for a selection of mounts to meet customer dependent applications. Mounts should be used with compatible Panduit cable ties for a complete wire routing solution.

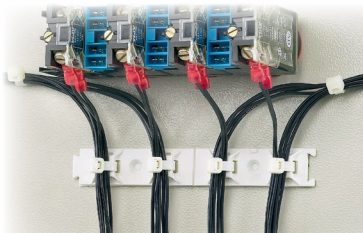


Part Number	Description	Std. Pkg. Qty.
ABM100-A-C	4-way adhesive backed cable tie mount; 1" x 1" (25.4mm x 25.4mm); nylon 6.6. Natural.	100 Pcs.
ABM100-AT-C0	4-way acrylic adhesive backed cable tie mount; 1" x 1" (25.4mm x 25.4mm); nylon 6.6. Black.	100 Pcs.
ABM112-A-C	4-way adhesive backed cable tie mount; 1.12" x 1.12" (28.5mm x 28.5mm); nylon 6.6. Natural.	100 Pcs.
ABM112-AT-C0	4-way acrylic adhesive backed cable tie mount; 1.12" x 1.12" (28.5mm x 28.5mm); nylon 6.6. Black.	100 Pcs.
ABM1M-A-C	4-way adhesive backed cable tie mount; 0.50" x 0.50" (12.7mm x 12.7mm); nylon 6.6. Natural.	100 Pcs.
ABMM-A-C	4-way adhesive backed cable tie mount; 0.75" x 0.75" (19.1mm x 19.1mm); ABS. Natural.	100 Pcs.
ABMM-AT-C0	4-way acrylic adhesive backed cable tie mount; 0.75" x 0.75" (19.1mm x 19.1mm); weather-resistant ABS. Black.	100 Pcs.
ABM2S-A-C	4-way adhesive backed cable tie mount; 1" x 1" (25.4mm x 25.4mm); ABS. White.	100 Pcs.
ABM2S-AT-C0	4-way acrylic adhesive backed cable tie mount; 1" x 1" (25.4mm x 25.4mm); ABS. Black.	100 Pcs.
ABM3H-A-L	4-way adhesive backed cable tie mount; 1.5" x 1.5" (38.1mm x 38.1mm); nylon 6.6. Natural.	50 Pcs.
ABM4H-A-L	4-way adhesive backed cable tie mount; 2.0" x 2.0" (50.8mm x 50.8mm); nylon 6.6. Natural.	50 Pcs.
SGABM20-AV-C300	Super grip adhesive backed cable tie mount; 0.75" x 0.75" (19.1mm x 19.1mm); nylon 6.6. Black.	100 Pcs.
SGABM25-AV-C300	Super grip adhesive backed cable tie mount; 1" x 1" (25.4mm x 25.4mm); nylon 6.6. Black.	100 Pcs.

Representative list only. Please visit www.panduit.com for full offering.

ABMQ Multiple Bridge Mount

The large adhesive surface area of the Multiple Bridge Mount provides a secure mounting method for up to four cable bundles. The dovetail feature allows multiple mounts to be perfectly aligned, providing an aesthetically pleasing solution with more cable routing capabilities for complex control panel systems. The score in the middle of the mount allows the user to cleanly break the mount in half if all four attachment points are not necessary. The rubber-based tape provides a high quick tack solution to improve adhesive performance in indoor applications.



Part Number	Part Description	Std. Pkg. Qty.
ABMQS-A-C	4-way adhesive backed multiple bridge cable tie mount, ABS, used with Miniature, Intermediate and Standard cable ties. White.	100 Pcs.

Representative list only. Please visit www.panduit.com for full offering.



Dynamic Cable Manager

The Panduit dynamic cable manager provides an engineered solution to secure cable bundles that require routing across the enclosure door hinge. The ball-in-socket design provides a reliable and cost-effective solution to secure the cable bundle that minimizes excessive strain on the mount and the wiring. The rubber-based tape provides a high quick-tack solution to improve adhesive performance in indoor applications.

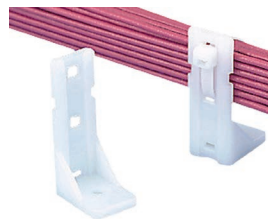


Part Number	Part Description	Std. Pkg. Qty.
ABDCM30-A-C	Dynamic cable manager for panel strain relief, 1.12" x 1.12" (28.4mm x 28.4mm), nylon 6.6, White.	100 Pcs.

Representative list only. Please visit www.panduit.com for full offering.

Non-Adhesive Cable Tie Mounts

Panduit non-adhesive cable tie mounts are available for screw-mount or push mount applications. Non-adhesive cable tie mounts are also available in a wide selection of specialty materials for resistance to severe environmental conditions. A variety of styles allow for the user to select the most appropriate mount for their application. Mounts should be used with compatible Panduit cable ties for a complete wire routing solution.

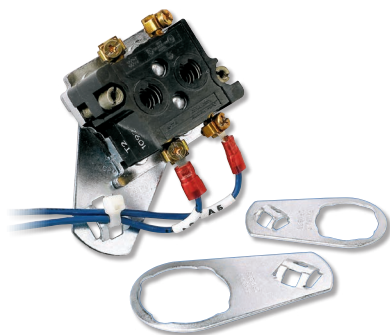


PP2S-S10-C

Part Number	Part Description	Std. Pkg. Qty.
PBMS-H25-C	The push button cable tie mount requires a 0.25" (6.4 mm) hole and is natural color. It is made of nylon 6.6, which increases mechanical strength, heat and wear resistance, and stiffness.	100 Pcs.
PP2S-S10-C	The pan-post standoff is natural color and requires a #10 (M5) screw. It measures 1.06"L x .72"W x 4.60"H (26.9 x 18.3x 116.9 mm). It is used with miniature, intermediate, and standard cable ties.	100 Pcs.
PWMS-H25-C	The winged push barb cable tie mount requires a 0.250" (6.5 mm) hole and is natural color. It is made of nylon 6.6, which increases mechanical strength, heat and wear resistance, and stiffness	100 Pcs.
TM3S10-C	The cable tie mount in natural color is applied with a #10 (M5) screw and is 0.61" (15.5 mm) wide. It is made of nylon 6.6, which increases mechanical strength, heat and wear resistance, and stiffness in indoor environments	100 Pcs.
TMEH-S25-Q0	The extra heavy cable tie mount in black is applied with a 1/4" (M6) screw. It is made of weather-resistant nylon 6.6, which increases mechanical strength, heat and wear resistance, and stiffness in outdoor environments.	25 Pcs.

Control Panel Mounts

Panduit control panel mounts are designed to provide strain relief for cables that terminate to a control panel switch. These mounts are intended for installation behind a control panel switch and provide a way to secure the terminated cables with a cable tie to maintain a reliable connection. Two sizes are available for the most common sizes of control panel switch designs.



Part Number	Part Description	Std. Pkg. Qty.
CPM87S-C	Control panel switch cable tie mount, 0.89" (22.6mm) hole, material zinc plated steel, used with Miniature, Intermediate and Standard cable ties.	100 Pcs.
CPM122S-C	Control panel switch cable tie mount, 1.22" (31.0mm) hole, material zinc plated steel, Miniature, Intermediate and Standard cable ties.	100 Pcs.

Adhesive Cable Accessories

Adhesive backed cable accessories allow the user to route and secure control panel wiring quickly and reliably with a single piece cable management solution. A wide range of styles and sizes can be used to secure a variety of cables, from individual small diameter wires to large cable bundles. Products are available with designs that use friction to hold a few cables, or with more secure releasable latching designs. The adhesive backed cable accessories use premium Panduit adhesive for a long-term reliable bond.



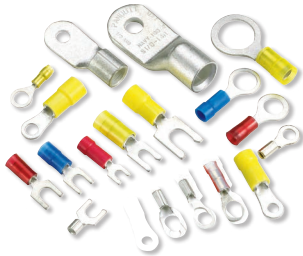
ACC38-A-C

Part Number	Part Description	Std. Pkg. Qty.
ACC38-A-C	Adhesive backed cord clip, .38" (9.7mm) bundle, natural.	100 Pcs.
ACC62-A-C	Adhesive backed cord clip, .62" (15.8mm) bundle, natural.	100 Pcs.
BEC62-A-L	Adhesive backed bevel entry clip, .62" (15.8mm) bundle, natural.	50 Pcs.
BEC75-A-L	Adhesive backed bevel entry clip, .75" (19.1mm) bundle, natural.	50 Pcs.
LWC50-A-C14	Adhesive backed latching wire clip, .50" (12.7mm) bundle, gray.	100 Pcs.
LWC75-A-C14	Adhesive backed latching wire clip, .75" (19.1mm) bundle, gray.	100 Pcs.

Terminals



Panduit terminals are designed and manufactured for fast assembly and reliable performance. Panduit provides an extensive line of tooling designed specifically to provide optimum performance.



Part Number	Description	Std. Pkg. Qty.
BSN14-C	Butt splice; 16 – 14 AWG; nylon insulated.	100 Pcs.
BSN18-C	Butt splice; 22 – 18 AWG; nylon insulated.	100 Pcs.
BSV10X-Q	Butt splice; 12 – 10 AWG, vinyl insulated.	25 Pcs.
DNF14-250FIB-C	Female disconnect; 16 – 14 AWG, 0.250 x 0.032 tab size, nylon fully insulated, funnel entry.	100 Pcs.
DNF14-250FIB-M	Female disconnect; 16 – 14 AWG, 0.250 x 0.032 tab size, nylon fully insulated, funnel entry.	1000 Pcs.
DNF18-250FIB-M	Female disconnect; 22 – 18 AWG, 0.250 x 0.032 tab size, nylon fully insulated, funnel entry.	1000 Pcs.
PN10-10R-D	Ring terminal; 12 – 10 AWG; stud size #10 nylon insulated.	500 Pcs.
PN14-10R-M	Ring terminal; 18 – 14 AWG; stud size #10 nylon insulated.	1000 Pcs.
PNF10-10R-D	Ring terminal; 12 – 10 AWG; stud size #10 nylon insulated.	500 Pcs.
PV10-10F-L	Fork terminal, 12 – 10 AWG, #10 stud size, vinyl insulated, funnel entry.	50 Pcs.
PV10-10R-L	Locking fork terminal, 18- 14 AWG, #10 stud size, vinyl insulated, funnel entry.	100 Pcs.
PV10-14R-L	Ring terminal; 12 – 10 AWG; stud size 1/4", vinyl insulated, funnel entry.	50 Pcs.
PV14-10R-M	Ring terminal; 16 – 14 AWG; stud size #10, vinyl insulated, funnel entry.	1000 Pcs.
CT-1550	Crimps most Pan-Term® #22 – 10 AWG Nylon and Vinyl Insulated Terminals, Splices, and Disconnects. The CT-1550 has the Red/Blue pocket closest to the pivot which provides a reduced crimp effort for those who make Red/Blue terminations.	1
CT-2300/ST	The Panduit® BlackFin® Battery Powered Micro-crimping Tool crimps 65 percent faster than a manual crimping tool thanks to an innovative trigger with power sensing technology. The lightweight, ergonomic design requires less hand force, reducing the risk of injury. The 4.7" (120mm) jaw with a force of 1.7 tons crimps a range of #22 – 10 AWG terminals, #26 – 10 AWG single wire ferrules, #22 – 12 AWG twin wire ferrules, and #14 – 10 AWG copper lugs. Includes battery powered micro-crimping tool, one 10.8 V, 1.5 Ah Li-ion battery, battery charger with USA Type A plug, case. Crimp dies (Panduit CD-525, CD-550, CD-570 and CD-090) sold separately.	1

Representative list only. Please visit www.panduit.com for full offering.

Ferrules



Panduit ferrule end sleeves terminate stranded wire into terminal blocks with superior termination performance. A wide assortment of ferrule styles and tool designs provide a proven way to make reliable connections. Meet UL486F, CSA-C22.2, and DIN standards. Automated solutions also available for high-volume applications.



CP-881



CP-991



CT-1000



CT-1170

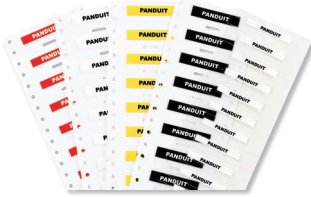


CTFP-40

Part Number	Description	Std. Pkg. Qty.
F78-8-M	Ferrule, non-insulated, 16 AWG (1.5mm ²) wire range, 0.31 (8.0mm) length.	1000 Pcs.
FSD74-8-D	Single wire DIN end sleeve insulated ferrule; Turquoise funnel entry; AWG #24 – 22 (0.34 mm ²); 0.49 (12.5 mm) length.	500 Pcs.
FSD75-8-D	Single wire DIN end sleeve insulated ferrule; White funnel entry; AWG #22 – 20 (0.5 mm ²); 0.53 (13.5 mm) length.	500 Pcs.
FSD75-8-DSL10	Insulated ferrules, on strip, single wire white DIN end sleeve, 20 AWG (0.50mm ²), 0.31(8.0mm) pin length.	500 Pcs.
FSD75-8-K	Insulated ferrules, single wire white DIN end sleeve on mini-reel, 22 – 20 AWG (0.50mm ²), 0.31 (8.0mm) pin length.	500 Pcs.
FSD76-8-D	Single wire DIN end sleeve insulated ferrule; Gray funnel entry; AWG #18 (0.75 mm ²); 0.55 (14 mm) length.	500 Pcs.
FSD76-8-DSL8	Insulated ferrules, on strip, single wire gray DIN end sleeve, 18 AWG (0.75mm ²), 0.31(8.0mm) pin length.	500 Pcs.
FSD76-8-K	Insulated ferrules, single wire gray DIN end sleeve on mini-reel, 18 AWG (0.75mm ²), 0.31 (8.0mm) pin length.	500 Pcs.
FSD77-8-D	Single wire DIN end sleeve insulated ferrule; Red funnel entry; 1.00 mm ² ; 0.57 (14.5 mm) length.	500 Pcs.
FSD77-8-DSL2	Insulated ferrules, on strip, single wire red DIN end sleeve, 18 AWG (1.0mm ²), 0.31(8.0mm) pin length.	500 Pcs.
FSD77-8-K	Insulated ferrules, single wire red DIN end sleeve on mini-reel, (1.0mm ²), 0.31 (8.0mm) pin length.	500 Pcs.
FSD77-10-D	Polypropylene insulated ferrules single wire red DIN end sleeve, 18 AWG (1.0mm ²), .39 (10.0mm) pin length.	500 Pcs.
FSD77-12-D	Single wire DIN end sleeve insulated ferrule; red funnel entry; 1.0 mm ² ; 0.73 (18.5mm) length.	500 Pcs.
FSD78-8-D	Single wire DIN end sleeve insulated ferrule; Black funnel entry; AWG #16 (1.5 mm ²); 0.57 (14.5 mm) length.	500 Pcs.
FSD78-8-DSL0	Insulated ferrules, on strip, single wire black DIN end sleeve, 16 AWG (1.5mm ²), 0.31(8.0mm) pin length.	500 Pcs.
FSD78-8-K	Insulated ferrules, single wire black DIN end sleeve on mini-reel, 16 AWG (1.5mm ²), 0.31 (8.0mm) pin length.	500 Pcs.
FSD78-10-D	Polypropylene insulated ferrules single wire black DIN end sleeve, 16 AWG (1.5mm ²), .39 (10.0mm) pin length.	500 Pcs.
FSD78-12-D	Single wire DIN end sleeve insulated ferrule; black funnel entry; AWG #16 (1.5 mm ²); 0.73 (18.5mm) length.	500 Pcs.
FSD80-8-D	Single wire DIN end sleeve insulated ferrule; blue funnel entry; AWG #14 (2.5mm ²); 0.59 (15mm) length.	500 Pcs.
FSD80-8-DK	Insulated ferrules, single wire blue DIN end sleeve on mini-reel, 14 AWG (2.5mm ²), 0.31 (8.0mm) pin length.	500 Pcs.
FSD80-8-DSL6	Insulated ferrules, on strip, single wire blue DIN end sleeve, 14 AWG (2.5mm ²), 0.31(8.0mm) pin length.	500 Pcs.
FSD80-12-D	Single wire DIN end sleeve insulated ferrule; blue funnel entry; AWG #14 (2.5 mm ²); 0.75 (19.0mm) length.	500 Pcs.
FSD81-10-D	Single wire DIN end sleeve insulated ferrule; gray funnel entry; AWG #12 (4mm ²); 0.69 (17.5mm) length.	500 Pcs.
FTD78-8-D	Polypropylene insulated ferrules twin wire black DIN color end sleeve, 16 AWG (1.5mm ²), 0.31(8.0mm) pin length.	500 Pcs.
FTD80-10-TL	Twin wire DIN end sleeve insulated ferrule: Blue funnel entry, 14 AWG (2.5mm ²), 0.39 (10.0mm) pin length.	250 Pcs.
CP-881	A semi-automated tool that provides a quick three step process (wire stripping, ferrule placement, and ferrule crimping) with a cycle time of 1.5 seconds. This tool is used with Panduit continuously molded #20 – 14 AWG (0.5 – 2.5mm ²) DIN ferrules on mini-reels of 500 – 5000 pieces for quality, medium to high volume terminations.	1000 Pcs.
CP-991	A bowl-fed semi-automated tool that provides a quick three step process (wire stripping, ferrule placement, and ferrule crimping) with a cycle time of 1.5 seconds. This tool is used with #24 - 12 AWG (0.50 - 2.5mm ²) DIN ferrules for quality, medium to high volume terminations.	1
CT-1000	Controlled cycle crimp tool with trapezoid profile for #20 – 14 AWG (0.50 – 2.5mm ²) insulated continuously molded ferrules on strips. Also cuts and strips wire.	1
CT-1170	Controlled cycle ferrule crimp tool with square profile for 28 – 5 AWG (0.08 – 16 mm ²) insulated and non-insulated single wire ferrules and 23 – 10 AWG (2 x 0.25mm ² – 2x 6mm ²) insulated twin ferrules.	1 Pc.
CTFP-40	Bench-top pneumatic loose piece ferrule tool; ferrule range = #24 – 12 AWG (0.25 – 4mm ²)	1

Military Grade Two-Sided Heat Shrink Labels

Permanent, one-piece, heat shrink sleeve designed to provide clear, durable identification of wires and cables. Print using Easy-Mark Plus™ Labeling Software and TDP43ME thermal transfer desktop printer on pages 18 – 19.

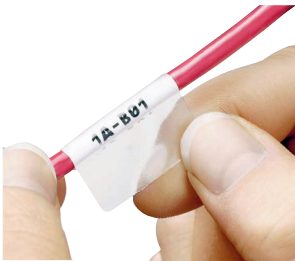


Part Number	Description	Wire Range	Std. Pkg. Qty.
H200X025H1T-2	2-sided Military Grade printable heat shrink label, White, 1/8" (3.1 mm) diameter polyolefin. 500 labels per roll.	22 – 18 AWG	1 Roll
H200X034H1T-2	2-sided Military Grade printable heat shrink label, White, 3/16" (4.7mm) diameter polyolefin. 500 labels per roll.	18 – 12 AWG	1 Roll
H200X044H1T-2	2-sided Military Grade printable heat shrink label, White, 1/4" (6.3 mm) diameter polyolefin. 500 labels per roll.	16 – 10 AWG	1 Roll
H200X064H1T-2	2-sided Military Grade printable heat shrink label, White, 3/8" (9.7mm) diameter polyolefin. 500 labels per roll.	12 – 6 AWG	1 Roll
H200X084H1T-2	2-sided Military Grade printable heat shrink label, White, 1/2" (12.7mm) diameter polyolefin. 500 labels per roll.	8 – 1 AWG	1 Roll
H200X122H1T-2	2-sided Military Grade printable heat shrink label, White, 3/4" (19.1mm) diameter polyolefin. 250 labels per roll.	8 – 4/0 AWG	1 Roll
H200X165H1T-2	2-sided Military Grade printable heat shrink label, White, 1" (25.4 mm) diameter polyolefin. 250 labels per roll.	4 AWG – 500 kcmil	1 Roll

Representative list only. Please visit www.panduit.com for full offering.

Vinyl Self-Laminating Labels

Includes a colored print-on area and clear over-laminate to protect the legend for clear and durable identification. Print using Easy-Mark Plus™ Labeling Software and TDP43ME thermal transfer desktop printer on pages 18 – 19.

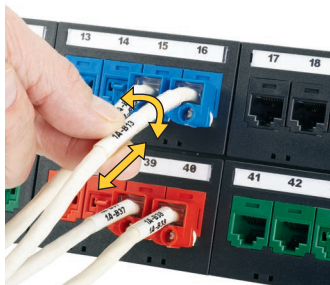


Part Number	Part Description	Std. Pkg. Qty.
S100X075VATY	Thermal Transfer, Vinyl, 1.00" W x 0.75" H, 0.25" POA, Clear/White, 3" Core, 18 – 14 AWG wire/cable.	5000 Pcs.
S100X125VATY	Thermal Transfer, Vinyl, 1.00" W x 1.25" H, 0.38" POA, Clear/White, 3" Core, 12 – 10 AWG wire/cable.	5000 Pcs.
S100X150VATY	Thermal Transfer, Vinyl, 1.00" W x 1.50" H, 0.50" POA, Clear/White, 3" Core, 10 – 6 AWG wire/cable.	5000 Pcs.
S100X225VATY	Thermal Transfer, Vinyl, 1.00" W x 2.25" H, 0.75" POA, Clear/White, 3" Core, 8 – 4 AWG wire/cable.	5000 Pcs.
S100X400VATY	Thermal Transfer, Vinyl, 1.00" W x 4.00" H, 1.00" POA, Clear/White, 3" Core, 2 – 1 AWG wire/cable.	2500 Pcs.
S100X650VATY	Thermal Transfer, Vinyl, 1.00" W x 6.50" H, 1.50" POA, Clear/White, 3" Core, 1/0 – 250 MCM wire/cable.	1000 Pcs.

Representative list only. Please visit www.panduit.com for full offering.

Turn-Tell™ Labels

Innovative label design allows labels to rotate for visibility from any angle, and for repositioning on the wire/cable to align legends and improve aesthetics. Print using Easy-Mark Plus™ Labeling Software and TDP43ME thermal transfer desktop printer on pages 18 – 19.

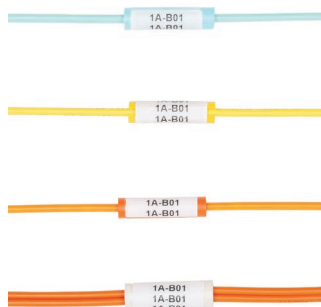


Part Number	Part Description	Std. Pkg. Qty.
R100X075V1T	Thermal transfer, vinyl, 1.00" W x 0.75" H, 0.25" POA, Clear/White, 3" Core, 18 – 14 AWG wire/cable.	2500 Pcs.
R100X125V1T	Thermal transfer, vinyl, 1.00" W x 1.25" H, 0.38" POA, Clear/White, 3" Core, 12 – 10 AWG wire/cable.	2500 Pcs.
R100X150V1T	Thermal transfer, vinyl, 1.00" W x 1.50" H, 0.50" POA, Clear/White, 3" Core, CAT 5e wire/cable.	2500 Pcs.
R100X225V1T	Thermal transfer, vinyl, 1.00" W x 2.25" H, 0.75" POA, Clear/White, 3" Core, CAT 6 wire/cable.	2500 Pcs.
R100X400V1T	Thermal transfer, vinyl, 1.00" W x 4.00" H, 1.00" POA, Clear/White, 3" Core, 2 – 1 AWG wire/cable.	1000 Pcs.

Representative list only. Please visit www.panduit.com for full offering.

LabelCore™ Fiber Optic Cable Identification System

Provides a larger surface on small fiber cables and allows legends to be clearly seen.



Part Number	Part Description	Std. Pkg. Qty.
NWSLC-2Y	Yellow cable identification sleeve for 2mm simplex fiber cable, 1" long: Use with labels S100X150YAJ (laser/inkjet), S100X150VAC (LS8E hand-held printer), S100X150VA1Y or S100X150VATY (thermal transfer printer).	100 Pcs.
NWSLC-2Y-AQ	Aqua cable identification sleeve for 2mm simplex fiber cable, 1" long: Use with labels S100X150YAJ (laser/inkjet), S100X150VAC (LS8E hand-held printer), S100X150VA1Y or S100X150VATY (thermal transfer printer).	100 Pcs.
NWSLC-3Y	Orange cable identification sleeve for 2mm simplex fiber cable, 1" long: Use with labels S100X150YAJ (laser/inkjet), S100X150VAC (LS8E hand-held printer), S100X150VA1Y or S100X150VATY (thermal transfer printer).	100 Pcs.
NWSLC-7Y	White cable identification sleeve for 3mm duplex cable, 1" long: Use with labels S100X225YAJ (laser/inkjet), S100X225VAC (LS8E handheld printer), and S100X225VA1Y or S100X225VATY (thermal transfer printer).	100 Pcs.

Representative list only. Please visit www.panduit.com for full offering.

Standard Marker Plates

Non-adhesive and halogen-free; used to identify wires, cables, equipment, and many other applications. Print using Easy-Mark Plus™ Labeling Software and TDP43ME thermal transfer desktop printer on pages 18 – 19.



Part Number	Description	Std. Pkg. Qty.
M200X050Y6T	Yellow, thermal transfer marker plate, 2.00" x 0.50". 500 labels per roll.	1 Roll
M200X050Y7T	White, thermal transfer marker plate, 2.00" x 0.50". 500 labels per roll.	1 Roll
M200X100Y6T	Yellow, thermal transfer marker plate, 2.00" x 1.00". 500 labels per roll.	1 Roll
M200X100Y7T	White, thermal transfer marker plate, 2.00" x 1.00". 500 labels per roll.	1 Roll
M300X050Y6T	Yellow, thermal transfer marker plate, 3.00" x 0.50". 500 labels per roll.	1 Roll
M300X050Y7T	White, thermal transfer marker plate, 3.00" x 0.50". 500 labels per roll.	1 Roll
M300X100Y6T	Yellow, thermal transfer marker plate, 3.00" x 1.00". 500 labels per roll.	1 Roll
M300X100Y7T	White, thermal transfer marker plate, 3.00" x 1.00". 500 labels per roll.	1 Roll

Representative list only. Please visit www.panduit.com for full offering.

Terminal Block Markers

Flexible marker design; create and install single or multiple markers in a single step. Less marker waste - print only as many as you need. Print using Easy-Mark Plus™ Labeling Software and TDP43ME thermal transfer desktop printer on pages 18 – 19.



Part Number	Description	Std. Pkg. Qty.
TB05X12EWT-AB1	Flexible terminal block markers on continuous rolls, 5mm x 12mm, White. Compatible with Allen-Bradley 1492-J3 and 1492-W3 terminal blocks and Weidmuller WDU 2.5 terminal blocks. 1000 labels per roll.	1 Roll
TB06X12EWT-AB1	Flexible terminal block markers on continuous rolls, 6mm x 12mm, White. Compatible with Allen-Bradley 1492-J4 and 1492-W4 terminal blocks and Weidmuller WDU4 terminal blocks. 1000 labels per roll.	1 Roll
TB08X12EWT-AB1	Flexible terminal block markers on continuous rolls, 8mm x 12mm, White. Compatible with Allen-Bradley 1492-J6 terminal blocks and Weidmuller WDU6 terminal blocks. 1000 labels per roll.	1 Roll
TB05X08EWT-AB2	Flexible terminal block markers on continuous rolls, 5mm x 8mm, White. Compatible with Allen-Bradley 1492-JD3/1492-L3/1492-LD3/1492-L3Q terminal blocks and Weidmuller WDR2.5 terminal blocks. 1000 labels per roll.	1 Roll
TB06X08EWT-AB2	Flexible terminal block markers on continuous rolls, 6mm x 8mm, White. Compatible with Allen-Bradley 1492-JD4/1492-L4/1492-LD4 terminal blocks and Weidmuller WDR4 terminal blocks. 1000 labels per roll.	1 Roll

Representative list only. Please visit www.panduit.com for full offering.

Raised Panel Labels IP69K

Raised thermal transfer printable surface with high-tack adhesive for strong holding power on rough, textured, painted, and powder coated surface areas. Print using Easy-Mark Plus™ Labeling Software and TDP43ME thermal transfer desktop printer on pages 18 – 19.



Part Number	Description	Std. Pkg. Qty.
C100X050APT	Thermal transfer raised panel component label, 1.00" W x 0.50" H, raised panel, White.	500 Pcs.
C120X190APT-22	Thermal transfer raised panel push button label, 1.20"W x 1.90" H, 22mm hole, raised panel, White.	500 Pcs.
C180X180APT-30	Thermal transfer raised panel push button label, 1.80"W x 1.80"H, 30mm hole, raised panel, White.	500 Pcs.
C180X130APT-30H	Thermal transfer raised panel half push button label, 1.80"W x 1.30"H, 30mm hole, raised panel, White.	500 Pcs.
C200X100APT	Thermal transfer raised panel component label, 2.00"W x 1.00"H, raised panel, White.	500 Pcs.

Representative list only. Please visit www.panduit.com for full offering.

Super-Tack Polyester Labels IP69K

Super-Tack Polyester labels are used on rough, textured, painted, and coated surface areas. Print using Easy-Mark Plus™ Labeling Software and TDP43ME thermal transfer desktop printer on pages 18 – 19.



Part Number	Description	Std. Pkg. Qty.
C100X050YPT	Thermal transfer component label, 1.00" W x 0.50" H, super-tack polyester, White.	10000 Pcs.
C200X100YPT	Thermal transfer component label, 2.00" W x 1.00" H, super-tack polyester, White.	2500 Pcs.
C275X125YPT	Thermal transfer component label, 2.75" W x 1.25" H, super-tack polyester, White.	2500 Pcs.
C300X200YPT	Thermal transfer component label, 3.00" W x 2.00" H, super-tack polyester, White.	2500 Pcs.
C400X300YPT	Thermal transfer component label, 4.00" W x 3.00" H, super-tack polyester, White.	2500 Pcs.

Representative list only. Please visit www.panduit.com for full offering.

Easy-Mark Plus™ Labeling Software

- Powerful, easy-to-use, and affordable software that provides innovative features and functionality to address unique labeling needs
- Quickly create simple or complex labels with text boxes, lines, frames, or tables, and other useful tools
- Design detailed labels with multiple zones and objects for applications such as rating plates, arc flash labels and fiber optic enclosures
- Simple user interface shows labels on the screen as they will be printed
- Create and print labels using QR codes, or any of the other 21 included barcode symbologies
- Free demo version available at <http://www.panduit.com/emp>



Part Number	Part Description	Std. Pkg. Qty.	Std. Ctn. Qty.
EMPLUS-CD	Easy-Mark Plus™ Labeling Software, CD-ROM.	1	10
EMPLUS-DL	Easy-Mark Plus™ Labeling Software, online download.	1	10
EMPLUS-2GO	Easy-Mark Plus™ Portable Application, USB flash drive.	1	10
EMPLUS-SERVER	Easy-Mark Plus™ Labeling Software, networkable server based version.	1	10

^WINDOWS is a registered trademark of Microsoft Corporation in the United States and/or other countries.
 System Requirements: 300 MB hard drive space and 2 GB Memory, Windows XP, Vista, 7, 8, 8.1, or 10^, 32 or 64 bit operating systems, Microsoft.NET Framework 2.0 or higher, Mouse or compatible pointing device, Keyboard, Optical Disc Drive or USB Port

TDP43ME Thermal Transfer Desktop Printer and Accessories

- Creates durable, crisp, clear legends and graphics that offer superior legibility
- Prints durable legends for harsh industrial environments
- Fine resolution for small type characters and images
- Easy-Mark Plus™ Labeling Software included with printer
- Up to 4 inches per second print speed
- Connects quickly and easily to PC, and offers connectivity flexibility to print by USB, parallel, serial, or Ethernet
- Easy ribbon loading reduces printer down time
- Able to connect to a network for sharing capability
- UL60950 listed, File #E165747



Part Number	Part Description	Std. Pkg. Qty.
TDP43ME	300 dpi printer; includes printer, Panduit® Easy-Mark Plus™ Labeling Software, RMEH4BL Black hybrid ribbon, AC power adapter with US power cord, USB cable, user manual, quick start card, and driver disk; for use in North America.	1
TDP43ME-KIT	TDP43ME printer kit. Includes: printer, Panduit® Easy-Mark Plus™ Labeling Software, RMEH4BL Black hybrid ribbon, AC power adapter with US power cord, USB cable, user manual, quick start card, TDP43ME-RS roll stand, TDP43ME-CASE, one roll of S100X150VATY labels, and driver disk; for use in North America.	1
TDP43ME-CASE	Hardside carrying case accommodates printer, AC power adapter, ribbons, printer cable, external roll stand, labels, and tools.	1
TDP43ME-CUTTER	Optional power/automatic cutter for TDP43ME thermal transfer desktop printer; easy to install for automatic cutting of labels.	1
TDP43ME-RS	External label roll stand for TDP43ME printer; used to rear feed labels that are supplied on 3" cores.	1

TDP43ME Desktop Printer Ribbons



Part Number	Part Description	Width		Length		Std. Pkg. Qty.
		In.	mm	Ft.	m	
RMER1BL	Black resin thermal transfer ribbon. Use with terminal block markers.	1.1	27.9			1
RMEH4BL	Black hybrid thermal transfer ribbon. Use with heat shrink, self-laminating, Turn-Tell® Labels, tan polyimide, and vinyl cloth labels.					1
RMER4BL	Black resin thermal transfer ribbon. Use with polyester labels, continuous vinyl tape, marker plates, and raised panel labels.					1
RMER4BU	Printer ribbon for use with TDP43ME polyester, continuous vinyl tape, marker plates, and raised panel labels comes in blue resin.	4.25	108.0	300.0	91.4	1
RMER4GR	Printer ribbon for use with TDP43ME polyester, continuous vinyl tape, marker plates, and raised panel labels comes in green resin.					1
RMER4RD	Printer ribbon for use with TDP43ME polyester labels, continuous vinyl tapes, marker plates and raised panel labels comes in red resin.					1
RMER4WH	Printer ribbon for use with TDP43ME polyester labels, continuous vinyl tapes, marker plates and raised panel labels comes in white resin.					1

Representative list only. Please visit www.panduit.com for full offering.

VeriSafe™ Absence of Voltage Testers

The Safe Way to Verify the Absence of Voltage.



When servicing electrical equipment, workers must comply with safety regulations that require a voltage verification test to validate the absence of voltage. This process includes a number of stages that can be complex and time-consuming when using hand-held portable test instruments.

The patent-pending VeriSafe™ Absence of Voltage Tester from Panduit simplifies this process by automating the voltage verification process.

Once installed, a simple push of a button enables qualified personnel to verify the absence of voltage and see an active indication when the absence of voltage is confirmed. This provides a new and innovative way to safely, reliably, and efficiently verify the absence of voltage before accessing potentially dangerous electrical equipment.

System Components

1 Indicator Module

- 30mm knockout, mount on exterior of enclosure
- Operate and maintain without exposure to electrical hazards
- Instruction label with operating instructions
- VS-AVT2 will have a blue faceplate while VS-AVT will have a yellow faceplate

2 AVT System Cable

- Connects isolation module to indicator module
- 600 V cable available in multiple lengths for easy installation
- Replaceable with connectors on each end
- Replaceable with additional lengths
- Locking connectors on both ends
- Right angle connector at indicator module saves space

3 Isolation Module

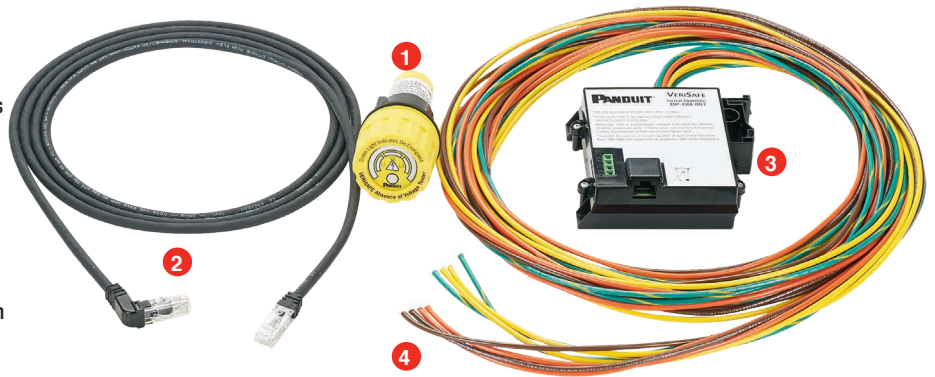
- Prevents hazardous voltage from reaching door
- Universal mounting (DIN rail or surface tabs)
- Output contacts provide ability to create alarms or communicate with other systems

4 Sensor Leads

- Can be installed on line or load side of electrical disconnect
- Two leads per phase; must be physically separated from each other
- Optimized for use with the VeriSafe™ Insulation Piercing Connector

Simple Battery Replacement

- Long-life industrial battery
- Replaceable from outside the enclosure
- Interior battery compartment is fingersafe (IP20)
- No tools required



Instruction Label



Shown: VS-AVT



Shown: Insulation Piercing Connectors

VeriSafe™ Absence of Voltage Tester (AVT)



Shown: VS-AVT



VS-AVT-RBOX

Part No.	Description
VS-AVT-C02-L03	VeriSafe™ Absence of Voltage Tester with 2 ft. system cable, 3 ft. sensor leads
VS-AVT-C08-L10	VeriSafe™ Absence of Voltage Tester with 8 ft. system cable, 10 ft. sensor leads

Equipment Retrofit Kits

VS-AVT-RKP1	Complete kit to retrofit equipment with VeriSafe™ Absence of Voltage Tester. Includes AVT device with 10 ft. sensor leads, 8 ft. system cable, VeriSafe™ Insulation Piercing Connection Kit 14 – 6 AWG power connectors, (12) cable ties, (6) cable tie mounts, (1) wire marker card
VS-AVT-RKP2	Complete kit to retrofit equipment with VeriSafe™ Absence of Voltage Tester. Includes AVT device with 10 ft. sensor leads, 8 ft. system cable, VeriSafe™ Insulation Piercing Connection Kit 4 – 3/0 AWG power connectors, (12) cable ties, (6) cable tie mounts, (1) wire marker card

VeriSafe™ Retrofit Enclosure

VS-AVT-RBOX	Complete enclosure to retrofit equipment with VeriSafe Absence of Voltage Tester. Includes 8" x 8", 4" panel and AVT device with 10ft. sensor leads and 2ft. system cable.
-------------	--

Accessories

VS-AVT-CABLE-02	AVT System Cable for use with VeriSafe™ AVT device. Cable length is 2 ft.
VS-AVT-CABLE-04	AVT System Cable for use with VeriSafe™ AVT device. Cable length is 4 ft.
VS-AVT-CABLE-08	AVT System Cable for use with VeriSafe™ AVT device. Cable length is 8 ft.
VS-AVT-CABLE-16	AVT System Cable for use with VeriSafe™ AVT device. Cable length is 16 ft.
VS-AVT-CABLE-20	AVT System Cable for use with VeriSafe™ AVT device. Cable length is 20 ft.
VS-AVT-CABLE-30	AVT System Cable for use with VeriSafe™ AVT device. Cable length is 30 ft.
VS-AVT-IL-LINE	Instruction Label for Verisafe™ AVT Device with Line Side Checked
VS-AVT-IL-LOAD	Instruction Label for Verisafe™ AVT Device with Line Side Checked
VS-AVT-DL	Diagnostic Label for Verisafe™ AVT Device

VeriSafe™ Hazardous Locations Absence of Voltage Tester (AVT)



Shown:
VS-AVT2

- Services other environments with Hazardous Location offering covering Class 1 Division 2 and Class 1 Zone 2 environments.
- Reduces the risk of exposure to electrical hazards which improves worker safety.
- Continues to provide a simplified process for easier compliance when used as part of the lockout/tagout process described in NFPA 70E.

Part No.	Description
VS-AVT2-C02 L03	VeriSafe™ Absence of Voltage Tester for Class 1 Division 2 hazardous locations - 2 ft. system cable, 3 ft. sensor leads
VS-AVT2-C08 L10	VeriSafe™ Absence of Voltage Tester for Class 1 Division 2 hazardous locations - 8 ft. system cable, 10 ft. sensor leads

VeriSafe™ Insulation Piercing Connectors



- The VeriSafe™ Insulation Piercing Connector provides a fast, secure, and reliable way to terminate AVT sensor leads.
- The compact connector design accommodates up to two taps in a single housing that fully insulates both connections.
- The patent pending connector allows taps to be made without compromising the integrity of conductors and includes integrated strain relief.
- Installation is fast and easy without the need to strip wires.
- Ideal for new and retrofit applications, connections can be made without modifying existing conductor runs.

Part No.	Description
VS-CKP14-6	VeriSafe™ Insulation Piercing Connection Kit for Tapping 14 to 6 AWG conductors. Kit includes 3 connectors for installment of 1 AVT
VS-CKP4-000	VeriSafe™ Insulation Connection Kit for Tapping 4 to 3/0 AWG conductors. Kit includes 3 connectors for installment of 1 AVT

Equipment Retrofit Kits

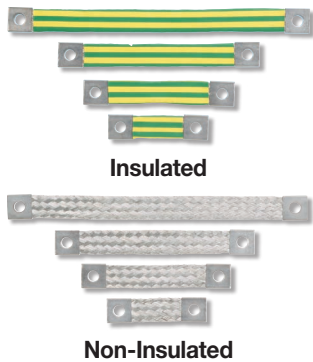
VS-AVT-RKP1	Complete kit to retrofit equipment with VeriSafe™ Absence of Voltage Tester. Includes AVT device with 10 ft. sensor leads, 8 ft. system cable, VeriSafe™ Insulation Piercing Connection Kit 14 – 6 AWG power connectors, (12) cable ties, (6) cable tie mounts, (1) wire marker card
VS-AVT-RKP2	Complete kit to retrofit equipment with VeriSafe™ Absence of Voltage Tester. Includes AVT device with 10 ft. sensor leads, 8 ft. system cable, VeriSafe™ Insulation Piercing Connection Kit 4 – 3/0 AWG power connectors, (12) cable ties, (6) cable tie mounts, (1) wire marker card

StructuredGround™ Flat Braided Bonding Straps



StructuredGround™ Flat Braided Bonding Straps are used to electrically bond enclosure doors, subpanels, motors, and machines in most applications for safety and ESD (Electrostatic Discharge). The flat ferrule design of this bonding component helps to reduce the effects of EMI because it passes high-frequency noise more effectively than round stranded-type cables.

In applications where motion or vibration is a concern, these straps resist breaking and cracking of individual strands that can degrade the effectiveness of the bond. They are constructed of #4 AWG tin-plated copper with a minimum strap width of 1" and can be terminated with a seamless ferrule that maintains the flat braided shape across its entire length.



Part Number	Description	Std. Pkg. Qty.
BS100445	Braided bonding strap, one-hole, insulated, 4.00" length x 1.06" width (101.6mm x 27.0mm).	1
BS100645	Braided bonding Strap, one-hole, insulated, 6.00" length x 1.06" width (152.4mm x 27.0mm).	1
BS100845	Braided bonding strap, one-hole, insulated, 8.00" length x 1.06" width (203.2mm x 27.0mm).	1
BS101245	Braided bonding strap, one-hole, insulated, 12.00" length x 1.06" width (304.8mm x 27.0mm).	1
BS100445U	Braided bonding strap, one-hole, non-insulated, 4.00" length x 1.06" width (101.6mm x 27.0mm).	1
BS100645U	Braided bonding strap, one-hole, non-insulated, 6.00" length x 1.06" width (152.4mm x 27.0mm).	1
BS100845U	Braided bonding strap, one-hole, non-insulated, 8.00" length x 1.06" width (203.2mm x 27.0mm).	1
BS101245U	Braided bonding strap, one-hole, non-insulated, 12.00" length x 1.06" width (304.8mm x 27.0mm).	1

Representative list only. Please visit www.panduit.com for full offering.

StructuredGround™ Universal Ground Bar System



The StructuredGround™ Universal Ground Bar System (UGB) is precision machined from electrolytic copper and tin plated to inhibit corrosion and offers multiple termination methods and mounting options, making it ideal for any control panel or enclosure application. The UGB enables the end user to choose the method in which to terminate conductors with connectors of their choice or simply cut and strip the wires. The UGB system will help reduce the types of ground bars that are needed to meet the various applications and customer requirements. The UGB is UL 467 Listed and CSA 22.2 Certified for grounding and bonding an equipment conductor up to 2/0 AWG; meets UL 508A requirements.



Part Number	Description	Std. Pkg. Qty.
UGB2/0-414-6	Universal ground bar accepts #14 – 4 AWG wire in 6 wire ports; add up to a 2/0 AWG main equipment grounding conductor with a compression or mechanical connector; 4.92" (125mm) length, 0.62" (15.7mm) width, 0.48" (12.2mm) height.	1
UGB2/0-414-12	Universal ground bar accepts #14 – 4 AWG wire in 12 wire ports; add up to a 2/0 AWG main equipment grounding conductor with a compression or mechanical connector; 8.28" (210.3mm) length, 0.62" (15.7mm) width, 0.48" (12.2mm) height.	1
UGB2/0-414-18	Universal ground bar accepts #14 – 4 AWG wire in 18 wire ports; add up to a 2/0 AWG main equipment grounding conductor with a compression or mechanical connector; 11.64" (295.7mm) length, 0.62" (15.7mm) width, 0.48" (12.2mm) height.	1
UGB-IN-SO	Universal ground bar isolation stand-offs; includes two stand-offs and hardware; 1.57" (40mm) length, 0.59" (15.0mm) width, 0.98" (25.0mm) height.	1
UGB-B-SO	Universal ground bar bonding stand-offs; includes two tin-plated copper stand-offs and hardware; 2.34" (59.3mm) length, 0.63" (15.9mm) width, 0.75" (19.1mm) height.	1

Representative list only. Please visit www.panduit.com for full offering.

Power Circuit Wiring Components



The mechanical lugs are made from high conductivity electrolytic copper. UL listed for use in the U.S. and Canada. The dual-rated neutral bars are made from high strength aluminum alloy, tin plated to prevent corrosion and oxidation. UL listed and CSA certified.



Part Number	Description	Std. Pkg. Qty.
CCB4/0-1AR-Q	One-hole, copper mechanical connector, anti-rotation lug, #2 AWG – 4/0 AWG STR.	25 Pcs.
NBA350-12	Neutral bar, assembly, 12-port, al., tin-plated, 14 – 6 AWG, with connector 350 – 6 AWG.	1
CXS125-14-Q	One-hole, copper, single barrel, straight fixed tongue lug, #4 – 1/0 AWG, 1/4" (6.4mm) stud hole.	25 Pcs.
CXS35-36-C	One-hole, copper, single barrel, straight fixed tongue lug, #14 – #6 AWG, 3/16" (4.8mm) stud hole.	100 Pcs.

Representative list only. Please visit www.panduit.com for full offering.

Armored Cable Grounding Kits

The armored cable grounding kit provides a secure bond to the armor sheath on indoor and indoor/outdoor fiber optic cables at both cassette and enclosure ends.

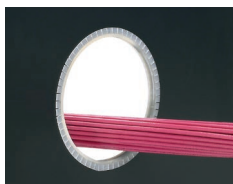


Part Number	Part Description	Std. Pkg. Qty.
ACG24K	#6 AWG(16mm ²) jumper for armored cable diameter up to 0.84" (21.3mm); 24" (609.6mm) length; factory terminated on one end with LCC6 two-hole copper compression lug and the other end with grounding terminal; provided with two each #12-24 and M6 thread-forming screws and a Black polypropylene terminal cover.	1
ACG24K-500	#6 AWG(16mm ²) jumper for armored cable diameter 0.85" (21.3mm) to 1.03" (26.2mm); 24" (609.6mm) length; factory terminated on one end with LCC6 two-hole copper compression lug and the other end with grounding terminal; provided with two each #12-24 and M6 thread-forming screws and a Black polypropylene terminal cover.	1
ACGK	Armored cable grounding kit with one grounding terminal for #6 AWG and one #10 mechanical clamp, 9/16" – 1 1/16" diameter range.	1
ACG24KX-500	#6 AWG(16mm ²) jumper for armored cable diameter 0.94" (23.9mm) to 1.5" (38.1mm); 24" (609.6mm) length; factory terminated on one end with LCC6 two-hole copper compression lug and the other end with grounding terminal; provided with two each #12-24 and M6 thread-forming screws and a Black polypropylene terminal cover.	1
ACGKX	Armored cable grounding kit with one grounding terminal for #6 AWG and one #16 mechanical clamp, 15/16" – 1 1/2" diameter range.	1

Representative list only. Please visit www.panduit.com for full offering.

Adhesive Lined Grommet Edging

Grommet edging protects and prevents wires and cables from chafing against sharp edges of panel walls and knockouts. Pressure sensitive adhesive provides an easy, clean, and secure application where additional holding strength is required. Use the slotted grommet edging to line irregularly shaped and round panel holes. Use the solid product for straight runs. The adhesive lined grommet edging has a shelf life of 3 years.



Part Number	Description	Std. Pkg. Qty.
GEE62F-A-C	Slotted grommet edging with adhesive, 0.036" – 0.062" panel thickness, polyethylene, Natural. 100 feet per roll.	1 Roll
GEE99F-A-C	Slotted grommet edging with adhesive, 0.062" – 0.099" panel thickness, polyethylene, Natural. 100 feet per roll.	1 Roll
GEE144F-A-C	Slotted grommet edging with adhesive, 0.099" – 0.144" panel thickness, polyethylene, Natural. 100 feet per roll.	1 Roll
GES62F-A-C	Solid grommet edging with adhesive (use on straight edges only), 0.036" – 0.062" panel thickness, polyethylene, Natural. 100 feet per roll.	1 Roll
GES99F-A-C	Solid grommet edging with adhesive (use on straight edges only), 0.062" – 0.099" panel thickness, polyethylene, Natural. 100 feet per roll.	1 Roll
GES144F-A-C	Solid grommet edging with adhesive (use on straight edges only), 0.099" – 0.144" panel thickness, polyethylene, Natural. 100 feet per roll.	1 Roll

Representative list only. Please visit www.panduit.com for full offering.

Spiral Wrap

Spiral wrap products provide abrasion protection for wire, cable, hoses, and tubing. The spiral wrap harnesses multiple cables into a single manageable bundle and allows for breakouts of single/multiple cables. Spiral wrap is available in several different colors to allow for easy identification of specific cable bundles. Multiple material options are available to allow the user to select the material that best suits their application needs. A simple installation tool is supplied in each package.



Part Number	Description	Std. Pkg. Qty.
T25F-C	Spiral wrap, offers abrasion protection for wires, cables, hoses and tubing, 0.25" (6.3mm) x 100', polyethylene, Natural. 100 feet per roll.	1 Roll
T25N-TL	Spiral Wrap, offers abrasion protection for wires, cables, hoses and tubing, .25" (6.3mm) x 250', nylon 6.6, Natural, 250 feet per roll.	1 Roll
T25T-L	Spiral wrap, offers abrasion protection for wires, cables, hoses, and tubing, 0.25" (6.4mm) x 50', TFE, Natural, 50 feet per roll.	1 Roll
T38F-C	Spiral wrap, offers abrasion protection for wires, cables, hoses and tubing, 0.38" (9.7mm) x 100', polyethylene, Natural. 100 feet per roll.	1 Roll
T38N-TL	Spiral Wrap, offers abrasion protection for wires, cables, hoses and tubing, .38" (9.7mm) x 250', nylon 6.6, Natural, 250 feet per roll.	1 Roll
T38T-L	Spiral Wrap, offers abrasion protection for wires, cables, hoses and tubing, .38" (9.7mm) x 50', TFE, Natural, 50 feet per roll.	1 Roll
T50F-C	Spiral wrap, offers abrasion protection for wires, cables, hoses and tubing, 0.50" (12.7mm) x 100', polyethylene, Natural. 100 feet per roll.	1 Roll
T50FR-C20Y	Spiral Wrap, offers abrasion protection for wires, cables, hoses and tubing, 0.50" (12.7mm) x 100', flame retardant polyethylene, Black. 100 feet per roll.	1 Roll
T100F-C	Spiral wrap, offers abrasion protection for wires, cables, hoses and tubing, 1.00" (25.4mm) x 100', polyethylene, Natural. 100 feet per roll.	1 Roll
T100FR-C20Y	Spiral Wrap, offers abrasion protection for wires, cables, hoses and tubing, 1" (25.4mm) x 100', flame retardant polyethylene, Black. 100 feet per roll.	1 Roll

Representative list only. Please visit www.panduit.com for full offering.

Pan-Wrap™ Split Harness Wrap

Pan-Wrap™ Split Harness Wrap is an abrasion protection product that incorporates an innovative design to maintain uniform bundle protection in dynamic applications. The unique wall design provides for easy cable breakouts and the patented slot pattern provides improved flexibility and abrasion protection properties. The large overlap accommodates a wide range of bundle diameters. The Pan-Wrap™ Installation Tool is effective in considerably reducing the time required to install a cable bundle within the Pan-Wrap™ Split Harness Wrap.



Part Number	Description	Std. Pkg. Qty.
PW50F-T20	Pan-Wrap™ Split Harness Wrap, 0.50" (12.7mm), 200 ft. (61m) per reel, polyethylene, Black.	1 Roll
PW75F-C20	Pan-Wrap™ Split Harness Wrap, 0.75" (19.1mm), 100 ft. (30.5m) per reel, polyethylene, Black.	1 Roll
PW75FR-C20Y	Pan-Wrap™ Split Harness Wrap, 0.75" (19.1mm), 100 ft. (30.5m) per reel, flame retardant polyethylene, Black.	1 Roll
PW100F-C20	Pan-Wrap™ Split Harness Wrap Split, 1" (25.4mm), 100 ft. (30.5m) per reel, polyethylene, Black.	1 Roll
PW100FR-C20Y	Pan-Wrap™ Split Harness Wrap, 1" (25.4mm), 100 ft. (30.5m) per reel, flame retardant polyethylene, Black.	1 Roll
PW150FR-L20Y	Pan-Wrap™ Split Harness Wrap, 1.5" (38.1mm), 50 ft. (15m) per reel, flame retardant polyethylene, Black.	1 Roll
PWT50	Pan-Wrap™ Installation Tool; 1/2".	1
PWT75	Pan-Wrap™ Installation Tool; 3/4".	1
PWT100	Pan-Wrap™ Installation Tool; 1".	1
PWT150	Pan-Wrap™ Installation Tool; 1 1/2".	1

Representative list only. Please visit www.panduit.com for full offering.

Corrugated Loom Tubing

Corrugated Loom Tubing is a cost-effective solution to provide abrasion protection and light crush and impact resistance for cables. The lengthwise slit makes it easy to install a bundle of wires or a pre-assembled harness assembly. The corrugated material is designed to be flexible and allow for navigating around tighter corners. The corrugated tubing does not have any insulating properties and is only suitable for indoor use only.



Part Number	Description	Std. Pkg. Qty.
CLT25F-C20	The corrugated loom tubing slit wall measures .25" (6.4mm) x 100' (30.5m). It is black and made of polyethylene.	1 Roll
CLT50F-C20	The corrugated loom tubing slit wall measures .50" (12.7mm) x 100' (30.5m). It is black and made of polyethylene.	1 Roll
CLT75F-C20	The corrugated loom tubing slit wall measures .75" (19.1mm) x 100' (30.5m). It is black and made of polyethylene.	1 Roll
CLT100F-C20	The corrugated loom tubing slit wall measures 1" (25.4mm) x 100' (30.5m). It is black and made of polyethylene.	1 Roll

Arc Flash Super-Tack Polyester Labels IP69K

Panduit Arc Flash Labeling Solutions are designed to comply with the latest regulations including the 2018 NFPA 70E Standard. Print using Easy-Mark Plus™ Labeling Software and TDP43ME thermal transfer desktop printer shown on pages 18 – 19.

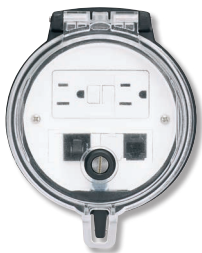


Part Number	Description	Std. Pkg. Qty.
C200X400A51	Die cut arc flash warning label, 4.00" x 2.00" (101.6mm x 50.8mm), warning header, polyester adhesive, Orange header and Black/White.	1 Roll
C200X400YZ1	Die cut arc flash danger label, 4.00" x 2.00" (101.6mm x 50.8mm), danger header, polyester adhesive, Red header and Black/White.	1 Roll
C400X400A51	Die cut arc flash warning label, 4.00" x 4.00" (101.6mm x 101.6mm), warning header, polyester adhesive, Orange header and Black/White.	1 Roll
C400X400YZ1	Die cut arc flash danger label, 4.00" x 4.00" (101.6mm x 101.6mm), danger header, polyester adhesive, Red header and Black/White.	1 Roll
C400X600A51	Die cut arc flash warning label, 4.00" x 6.00" (101.6mm x 152.4mm), warning header, polyester adhesive, Orange header and Black/White.	1 Roll
C400X600Y81	Die-cut safety label, 4.00" x 6.00" (101.6mm x 152.4mm), polyester adhesive, Yellow.	1 Roll
C400X600YZ1	Die-cut arc flash danger label, 4.00" x 6.00" (101.6mm x 152.4mm), polyester adhesive, Red/White danger header.	1 Roll

Representative list only. Please visit www.panduit.com for full offering.

Data Access Port Rated Type (UL, CSA, NEMA) 4, 4X, and 12, IP65, IP66

The Data Access Port provides data port and electrical outlet access to equipment without the safety hazards of opening the panel. The access port provides availability to log in to the network at the work site and can be used for reprogramming internal controllers. The circular design allows for data access ports to be installed effortlessly by using a standard panel punch. The modular design allows for RJ45 jacks, circuit breakers, USB, and other modular connectors to be interchanged at any time, allowing maximum design flexibility. Snap on mounting plate covers mounting screws and prevents tampering or unauthorized removal of access port from the control panel. Data access port has both a quarter turn lock and provisions for a padlock, both of which provide exceptional security. Versions are configured to accommodate any specification, including custom marking. In addition to the Simplex and GFCI outlets, options are available to incorporate standard 45mm European outlets.



DAP4

Part Number	Description
4 Inch Data Access Port	
DAP4BC-G0	Data Access Port, 4in. Base, GFCI Outlet
DAP4BB-G0	Data Access Port, 4in. Base w/ Black Cover, GFCI Outlet
DAP4BC-X0	Data Access Port, 4in Base w/ International Faceplate insert
DAP4BC-G0-5U	Data Access Port, 4in. Base, GFCI Outlet, CAT 5e Coupler, USB Coupler
DAP4BC-G0-5	Data Access Port, 4in. Base, GFCI Outlet, CAT 5e Coupler
DAP4BC-G3-5	Data Access Port, 4in. Base, GFCI Outlet, CAT 5e Coupler, 3 Amp Breaker
DAP4BC-G0-4	Data Access Port, 4in. Base, GFCI Outlet, CAT 5e Shielded Coupler
DAP4BC-G3-4	Data Access Port, 4in. Base, GFCI Outlet, CAT 5e Shielded Coupler, 3 Amp Breaker
DAP4BC-G0-6	Data Access Port, 4in. Base, GFCI Outlet, CAT 6 Coupler
DAP4BC-G3-6	Data Access Port, 4in. Base, GFCI Outlet, CAT 6 Coupler, 3 Amp Breaker



DAP3

Part Number	Description
3 Inch Data Access Port	
DAP3BC-00	Data Access Port, 3in. Base, 4 Blank Data Modules, No Power
DAP3BC-00-55	Data Access Port, 3in. Base, Two CAT 5e Couplers
DAP3BC-S0	Data Access Port, 3in. Base, Simplex Outlet
DAP3BB-S0	Data Access Port, 3in. Base w/ Black Cover, Simplex Outlet
DAP3BC-S0-55	Data Access Port, 3in. Base, Simplex Outlet, Two CAT 5e Couplers
DAP3BC-S0-5U	Data Access Port, 3in. Base, Simplex Outlet, CAT 5e Coupler, USB Coupler
DAP3BC-S0-5	Data Access Port, 3in. Base, Simplex Outlet, CAT 5e Coupler
DAP3BC-S3-5	Data Access Port, 3in. Base, Simplex Outlet, 3 Amp Breaker, CAT 5e Coupler
DAP3BC-S0-4	Data Access Port, 3in. Base, Simplex Outlet, CAT 5e Shielded Coupler
DAP3BC-S3-4	Data Access Port, 3in. Base, Simplex Outlet, 3 Amp Circuit Breaker, CAT 5e Shielded Coupler
DAP3BC-S0-6	Data Access Port, 3in. Base, Simplex Outlet, CAT 6 Coupler
DAP3BC-S3-6	Data Access Port, 3in. Base, Simplex Outlet, 3 Amp Breaker, CAT 6 Coupler



IAEBH

Part Number	Description
30 Millimeter Data Access Port	
IAEBHUSBAA	30mm IndustrialNet™ USB industrial bulkhead connector with protective cover
IAEBH5E	30mm IndustrialNet™ Category 5e, 8-position, 8-wire industrial bulkhead connector with protective cover
IAEBHC5E	30mm IndustrialNet™ Category 5e, 8-position, 8-wire industrial black bulkhead coupler with protective cover.
IAEBH5ES	30mm Category 5e, 8-position, 8-wire shielded industrial connector with protective cover.
IAEBH6	30mm IndustrialNet™ Category 6, RJ45, 8-position, 8-wire industrial bulkhead connector with protective cover.
IAEBHC6	30mm IndustrialNet™ Category 6, RJ45, 8-position, 8-wire black industrial bulkhead coupler with protective cover.
IAEBH6S	30mm IndustrialNet™ Category 6, RJ45, 8-position, 8-wire shielded black industrial bulkhead connector with protective cover.

Network Security Block-Out and Lock-In Devices

Deter unauthorized network access and physical system changes.



Part Number	Description	Color	Std. Pkg. Qty.
Block-Out Devices			
PSL-DCJB	Ten RJ45 jack module block-out devices and one removal tool.	Red	1
PSL-LCAB	Ten LC jack module block-out devices and one removal tool.	Red	1
PSL-0SCBD	Ten SC jack module block-out devices and one removal tool.	Red	1
PSL-USBA	Package of five USB Type A blockout devices and one removal tool.	Red	1
PSL-USBB	Package of ten USB Type B blockout devices and one removal tool.	Red	1
Lock-In Devices			
PSL-DCPLX	Ten RJ45 plug lock-in devices, one installation/removal tool.	Red	1
PSL-DCPLRX	Ten recessed RJ45 plug lock-in devices, one installation/removal tool.	Red	1
FLCCLIW-X	LC duplex lock-in clip and removal tool.	White	1
QPPLD6-X	QuickNet™ 6-pack Plug Pack Lock-In Device.	Red	1
QPPLD8-X	QuickNet™ 8-pack Plug Pack Lock-In Device.	Red	1

Representative list only. Please visit www.panduit.com for full offering.

The Connected Control Panel

An ethernet enabled control panel supports the increasing number of Ethernet nodes on the plant floor and allows the business to measure productivity in real-time, resulting in improved efficiencies, increased productivity and reduced costs.

Industrial Network Uninterruptible Power Supply (UPS)

The Panduit Industrial Network UPS uses ultracapacitors instead of batteries, providing uninterrupted power and decreased risk of downtime for critical industrial applications including managed network switches, micro PLCs, and HMIs. The no-battery design is maintenance-free, delivering 2X better ROI and 50 – 70% lower cost of ownership than a battery-based UPS. Remote management via Ethernet connectivity with SNMP v1/v2c/v3 capability and standard web browser interface reduces operation expenses.



Part Number	Part Description	Std. Pkg. Qty.
UPS00100DC	Uninterruptible Power Supply (UPS), 100 Watt; no-battery, maintenance-free with remote management; 24 – 28 VDC in/out, wide operating temperature range: -40°C to +60°C, DIN rail mount. UL Listed and CSA Certified.	1
UPS003LSM	UPS load sense module. Optional accessory for use in dual, redundant power supply configurations to monitor load on primary supply.	1

IndustrialNet™ DIN Rail Mount Patching Solutions

IndustrialNet™ 8-port DIN Rail Mount Patching Solutions conserve precious real estate by consolidating all patching (fiber and copper) onto the DIN rails of a zone enclosure or control panel. These patching solutions are designed to “fit” with standard industrial switches and promote a structured cabling environment in the industrial network. IndustrialNet™ 8-port DIN Rail Mount Patching Solutions allow customers to easily deploy copper and fiber connectivity and provide improved network performance and flexibility through the creation of fiber and copper permanent links in the same modular DIN footprint.



Part Number	Part Description	Std. Pkg. Qty.
FDME8RG	8-port fiber optic patch panel, DIN rail mount; includes a PG21 or 3/4 NPT cable cord grip to secure fiber cable(s) exiting the enclosure.	1
CDPP8RG	8-port copper patch panel, DIN rail mount; includes screws to attach faceplate, Ultimate ID® Labels and Clear Covers; can also mount to other surfaces using mounting holes in latches.	1
CDPP8RG-S	IndustrialNet™, 8-port DIN Rail mount Shielded Patch Panel. Includes Ultimate ID labels and label covers.	1

Representative list only. Please visit www.panduit.com for full offering.

Mini-Com™ DIN Rail Mount Adapter

The DIN Rail Mount Adapter enables connection of active equipment in a zone enclosure or control panel. The adapter accepts a single module space Mini-Com™ Module allowing easy moves, adds or changes to a single connection, with no specialized tools required. Low profile, compact size enables high component density on valuable DIN rail real estate.



Part Number	Part Description	Std. Pkg. Qty.
CADIN1IG*	Mini-Com™ DIN Rail Mount Adapter mounts to standard 35mm DIN rail and accepts any single port Mini-Com® Module, International Gray.	1

*For standard colors other than IG (International Gray), replace suffix with WH (White), IW (Off White), BL (Black) or EI (Electric Ivory). Port can be identified with ULS8BW and LS8E hand-held thermal transfer printer. Use CJSJK-XY kit to ground shielded jack modules to ground wire in shielded applications.
Representative list only. Please visit www.panduit.com for full offering.

IndustrialNet™ Copper Connectivity

IndustrialNet™ plugs, connectors, and adapters provide an ideal solution to support Industrial Ethernet connections to machines, devices and the rest of the plant network.



ISPS5E44MFA
ISPS6A88MFA



ICAM12X90RJS
ICAM12XRJS
ICAM12DRJS



IAEBHV56XS



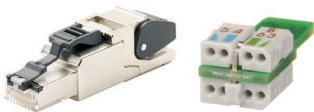
IAEBH5*
IAEBH6*
IAEBHC5*
IAEBHC6*



FPS6X88MTG



MPSIV56XT



ISPS688FA
ISPS688FAS



IAEFP1
IAEFP2-2G

Part Number	Description	Std. Pkg. Qty.
-------------	-------------	----------------

Industrial M12 Connectors

ISPS5E44MFA	Category 5e M12 D-code shielded field terminable connector, male.	1
ISPS6A88MFA	Category 6A M12 X-code shielded field terminable connector, male.	1
ICAM12X90RJS	Category 6A M12 X-code shielded to RJ45 industrial adapter, 90° angle, panel mount.	1
ICAM12XRJS	Category 6A M12 X-code shielded to RJ45 industrial adapter, panel mount.	1
ICAM12DRJS	Category 5e M12 D-code to RJ45 industrial adapter, panel mount.	1

Industrial Bulkhead RJ45 Connector with Protective Cover

IAEBHV56XS	Category 6A Variant 5 IP67 rated RJ45 connector, shielded.	1
IAEBH6X	Category 6A Variant 1 IP67 rated RJ45 connector.	1
IAEBH6XS	Category 6A Variant 1 IP67 rated RJ45 connector, shielded.	1
IAEBH6	Category 6 Variant 1 IP67 rated RJ45 connector.	1
IAEBH6S	Category 6 Variant 1 IP67 rated RJ45 connector, shielded.	1
IAEBH5E	Category 5e Variant 1 IP67 rated RJ45 connector.	1
IAEBH5ES	Category 5e Variant 1 IP67 rated RJ45 connector, shielded.	1

Industrial Shielded Field Term Plug

FPS6X88MTG	IndustrialNet™, Category 6A Shielded, Field Terminable RJ45 Plug	1
FPE6X88MTG	PROFINET, Category 5e Shielded Field Terminable RJ45 Plug	1

Industrial Bulkhead Couplers with Protective Cover

IAEBHC6	Category 6 Variant 1 IP67 rated RJ45 coupler.	1
IAEBHC5E	Category 5e Variant 1 IP67 rated RJ45 coupler.	1

Industrial Mini-Com® Coupler Module

IAEBHUSBAA	USB 2.0 Variant 1 IP67 rated female A to female A coupler.	1
-------------------	--	---

Industrial RJ45 Plugs

MPSIV56XT	Category 6A Variant 5 IP67 rated RJ45 plug for 26 – 22 AWG solid or stranded, shielded.	1
ISPS688FA	Category 6A RJ45 plug for 24 – 22 AWG solid, 1.0 – 1.6mm, shielded.	1
ISPS688FAS	Category 6A RJ45 plug for 24 – 22 AWG stranded, 0.85 – 1.00mm, shielded.	1

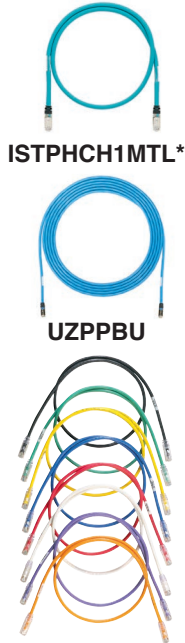
Bulkhead Faceplates

IAEFP1	Vertical faceplate, accepts one IndustrialNet™ Bulkhead Connector.	1
IAEFP2-2G	Double gang, vertical faceplate, accepts two IndustrialNet™ Bulkhead Connectors.	1

Representative list only. Please visit www.panduit.com for full offering.

Copper Patch Cords

Patch cords are ideal for patching in panel building applications and are available in performance levels of Category 5e, 6 and 6A for UTP and shielded applications. The variety of cable colors and lengths meet individual length and color-coding requirements for greater system flexibility. Robust, 600V-rated patch cords deliver reliability for panel or on-machine applications when space is shared with high voltage power cables in industrial environments.



Part Number	Description	Std. Pkg. Qty.
UTPCH*Y	Category 5e, UTP patch cord with Pan-Plug® Modular Plugs on each end.	1
STPCH*MBBL	Category 5e, shielded patch cord with Pan-Plug® Shielded Modular Plugs on each end.	1
UTPSP*Y	Category 6, UTP patch cord with TX6™ PLUS Modular Plugs on each end.	1
STP6X*IG	Category 6A, 10 Gb/s S/FTP patch cord with TX6A™ 10Gig™ Modular Plugs on each end.	1
UTP6ASD*	Category 6A (SD), 10 Gb/s UTP patch cord with TX6A™ 10Gig™ Modular Plugs on each end.	1
UZPPBU*	Category 6A, UTP, solid, plenum, zone cable assembly with TX6A™ 10Gig™ Modular Plugs on each end.	1
ISTPHCH0.3TL	IndustrialNet™, Category 5e Shielded, 600V, Patch Cord. Additional lengths available, replace 0.3 with 0.6, 1M, 1.5M, 2M, 2.5M, 3M, 3.5M, 4M, 4.5M, 5M, 7M, or 10M.	1
ISTPH6X0.3TL	IndustrialNet™, Category 6A Shielded, 600V, Patch Cord. Additional lengths available, replace 0.3 with 0.6, 1M, 1.5M, 2M, 2.5M, 3M, 3.5M, 4M, 4.5M, 5M, 7M, or 10M.	1

Optional RJ45 plug lock-in devices offer a tamper resistant design that blocks unauthorized removal of critical connections, see page 22. *A variety of performance levels, standard lengths and colors are available, contact customer service. Representative list only. Please visit www.panduit.com for full offering.

Copper Bulkhead Patch Cords



Part Number	Description	Std. Pkg. Qty.
ISTPH6X10MBL	IndustrialNet™ Copper Patch Cord, Category 6A, SFTP, patch cord with plug caps, 10 meters. Black.	1
ISTPCH%MBLY	Industrial Copper Patch Cord, Category 5e, STP, modular plugs with caps. Black.	1
IUTPCH%BLY	Industrial Copper Patch Cord, Category 5e, UTP, modular plugs with caps. Black.	1
IUTP6X%MBL	IndustrialNet™ Copper Patch Cord, Category 6A, SFTP, unshielded plugs with caps. Black.	1

Copper Cable



ISFCH6X04BTL-UG



IFRH5C04BL-UG

Part Number	Description	Std. Pkg. Qty.
Category 6A		
ISFCH6X04ATL-US	Industrial, 600V, 4-pair, 24/7 AWG Stranded, SF/UTP, CMR, Oil Res., UV Res., Teal, 1000 ft. Reel.	1000
ISFCH6X04BTL-US	Industrial, 600V, 4-pair, 26/7 AWG Stranded, SF/UTP, CMR, Oil Res., UV Res., Teal, 1000 ft. Reel.	1000
Category 6		
IFRH6C04BL-UGS	Industrial, 600V, 4-pair, 23/1 AWG Solid, F/UTP, CMR, Black, 305m/1000 ft. Reel.	1000
Category 5e		
IFRH5C02BL-UG-S	Industrial 600V, 2-pair, 24/1 AWG Solid, F/UTP, CMR, Black, 305m/1000 ft. Reel.	1000
IFRH5C04BL-UG-S	Industrial 600V, 4-pair, 24/1 AWG Solid, F/UTP, CMR, Black, 305m/1000 ft. Reel.	1000
ISFCH5C02ATL-XG	IndustrialNet™, 600V, 2-pair, 24/7 AWG, SF/UTP, CMX, Oil Res., UV Res., Weld Spatter Res., Teal. 1000 ft. Reel.	1000
ISFCH5C04ATL- XG	IndustrialNet™, 600V, 4-pair, 24/7 AWG, SF/UTP, CMX, Oil Res., UV Res., Weld Spatter Res., Teal. 1000 ft. Reel.	1000

Fiber Patch Cords

IndustrialNet™ Patch Cords are pre-terminated and provide IP67 seal when mated to IP67 bulkhead adapters.



Part Number	Description	Std. Pkg. Qty.
IAEF617P-7PM1	Industrial LC to LC multimode duplex patch cord, 62.5/125µm, 1 meter.	1
IAEF617P-NM1	Industrial LC to pigtail multimode duplex pigtail, 62.5/125µm, 1 meter.	1

Representative list only. Please visit www.panduit.com for full offering.

IndustrialNet™ Overmolded Cordsets

IndustrialNet™ Overmolded Cordsets deliver high quality patch connections from machines and devices to switches and enclosures on the plant floor. Protocols supported include Ethernet, EtherNet/IP*, PROFINET, Modbus, and EtherCAT. The cordsets are industrially rated to IP67/68, NEMA 1, 3, 4, 6, 6P, UL and meet the industrial premise standards for performance, including M.I.C.E guidelines, ensuring high performance and longevity under harsh environmental conditions.

*EtherNet/IP is a trademark of ODVA, Inc.



M12, bulkhead, female D-code connector



M12, male D-code, straight connector



M12, female D-code, straight connector



M12, male D-code, angled connector



RJ45 modular plug



M12, bulkhead, female X-code connector



M12, male X-code, straight connector

Part Number	Termination End 1	Termination End 2	Std. Pkg. Qty.
-------------	-------------------	-------------------	----------------

Category 5e, STP Cable

ICD11T1NTL*M	M12, male D-code, straight connector	M12, male D-code, straight connector	1
ICD22T1NTL*M	M12, male D-code, angled connector	M12, male D-code, angled connector	1
ICD14T1NTL*M	M12, male D-code, straight connector	RJ45 Modular Plug	1
ICD44T1NTL*M	M12, bulkhead, female D-code connector	RJ45 Modular Plug	1
ICD45T1NTL0.5M	M12, bulkhead, female D-code connector	Unterminated	1
ICD35T1NTL*M	M12, female D-code, straight connector	Unterminated	1
ICD25T1NTL*M	M12, male D-code, angled connector	Unterminated	1
ICD15T1NTL*M	M12, male D-code, straight connector	Unterminated	1

Category 5e, UTP Cable

ICD11T2NTL*M	M12, male D-code, straight connector	M12, male D-code, straight connector	1
---------------------	--------------------------------------	--------------------------------------	---

Category 6A, STP Cable

ICX11T1NTL*M	M12, male X-code, straight connector	M12, male X-code, straight connector	1
ICX44T1NTL*M	M12, bulkhead, female X-code connector	RJ45 Modular Plug	1
ICX45T1NTL0.5M	M12, bulkhead, female X-code connector	Unterminated	1
ICX15T1NTL*M	M12, male X-code, straight connector	Unterminated	1

*A variety of standard lengths and configurations are available, contact customer service. Representative list only. Please visit www.panduit.com for full offering.

IndustrialNet™ Motor Control Center (MCC) Connectivity

IndustrialNet™ MCC Cable Bundles provide the critical connections between industrial switches and other smart devices to the MCC, allowing businesses to take advantage of new IoT and Ethernet technologies for improved monitoring and maintenance of existing systems. Pre-terminated and industrially rated, Panduit MCC connectivity delivers a fast and reliable solution for harsh plant floor applications.

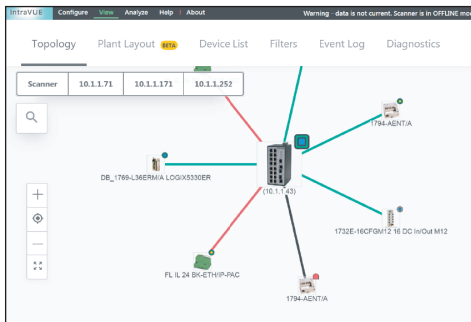


Part Number	Description	Std. Pkg. Qty.
I4JPBJLU*	Category 6A plenum; 300V; jack no stagger to jack-no stagger, no loom, Black.	1
I4KOTJLUX*	Category 6A outdoor; 600V; jack no stagger to jack no stagger, no loom, Teal.	1

*A variety of connections and lengths in loomed and non-loomed versions available, contact customer service. Representative list only. Please visit www.panduit.com for full offering.

IntraVUE™ Industrial Ethernet Visualization and Monitoring Software

IntraVUE™ Software automatically detects Ethernet-connected devices and assembles them into a connection tree map of the physical layer network infrastructure, providing visibility into all levels of devices on a manufacturing floor. This software tool enables quick and efficient identification to network communication problems and provides a comprehensive, accurate view of an entire Ethernet device architecture for non-technical users. IntraVUE™ Software empowers maintenance and/or controls engineers to shift from a reactive to proactive approach to greatly improve both the uptime and performance of critical, real-time networked automation systems.



Nodes	Standard Product Number	Advanced Product Number
128	SNMS-0128	SNMA-0128
256	SNMS-0256	SNMA-0256
512	SNMS-0512	SNMA-0512
1,204	SNMS-1024	SNMA-1024
2,048	SNMS-2048	SNMA-2048
4,096	SNMS-4096	SNMA-4096
8,192	SNMS-8192	SNMA-8192

Product #WNMS-APPL is an optional Linux-based IntraVUE™ Appliance Package that contains only hardware.

The Control Panel / Wire Harness Program is built to enable partners to grow market share by partnering with Panduit, creating strong relationships and offering best in class incentives to win projects together.

PROGRAM TIER STRUCTURE



1

PLATINUM

\$300,000+ USD | \$390,000 CAD
Base 4%, Growth 2%, POS Adder .25% Quarterly

2

GOLD

\$125,000 - \$299,999 USD | \$162,500 - \$389,999 CAD
Base 3%, Growth 2%, POS Adder .25% Quarterly

3

SILVER

\$50,000 - \$124,999 USD | \$65,000 - \$162,499 CAD
Base 2%, Growth 2%, POS Adder .25% Quarterly

4

BRONZE

\$10,000 - \$49,999 USD | \$13,000 - \$64,999 CAD
Base 1%, Growth 2%, POS Adder .25% Quarterly



CAP: \$30,000 USD | \$39,000 CAD

▶ FOUR TIERED PROGRAM

- Bronze, Silver, Gold & Platinum
- Annual Purchase Requirement Based

▶ CORE BENEFITS & TOOL CREDITS

- Growth Incentive
- Base Incentive
- POS Adder

▶ CORE REQUIREMENTS

- Signed T&Cs
- Annual POS Submittal

FOR MORE INFORMATION PLEASE CONTACT US:

CALL



800-759-9428

EMAIL



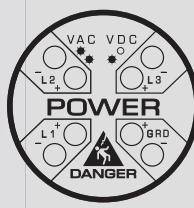
panduitpartners@panduit.com

PANDUIT®

infrastructure for a connected world

ABSENCE OF VOLTAGE TESTERS ARE MORE THAN VOLTAGE INDICATORS

	VeriSafe™ AVT	Voltage Indicator	Voltage Test Station
Indicates presence of voltage	✓	✓	✓
Built-in known voltage source	✓	X	X
Tests for absence of voltage	✓	X	✓ <small>*requires a portable test instrument & known voltage source</small>
Verification tester is in contact with the test point	✓	X	X
Keeps hazardous voltage off the door	✓	X	X
Diagnostic codes provide intelligence	✓	X	X
Built-in overcurrent protection	✓	X	X
Automatically self-calibrates	✓	X	X
UL listed and labeled for verifying the absence of voltage (UL 1436)	✓	X	X
Meets the requirements to verify the absence of voltage described in NFPA 70E 120.5(7) Exception 1	✓	X	X



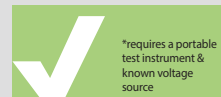
Indicates presence of voltage



Built-in known voltage source



Tests for absence of voltage



Verification tester is in contact with the test point



Keeps hazardous voltage off the door



Diagnostic codes provide intelligence



Built-in overcurrent protection



Automatically self-calibrates



UL listed and labeled for verifying the absence of voltage (UL 1436)



Meets the requirements to verify the absence of voltage described in NFPA 70E 120.5(7) Exception 1





SCP-01



PANDUIT®

Panduit Corp.
World Headquarters
Tinley Park, IL 60487

cs@panduit.com

US and Canada: 800.777.3300

Europe, Middle East, and Africa:

44.20.8601.7200

Latin America: 52.33.3777.6000

Asia Pacific: 65.6305.7575

www.panduit.com