

Plenum Network Infrastructure for In-Ceiling Applications



In today's enterprise, things are looking up ... literally. Look into that air-handling space above the ceiling tiles and you're likely to find wireless access points, security cameras, and connections for audio-video equipment, safety systems, and more.

Connecting these critical components in an air-handling space requires plenum-rated products. These products comply with safety requirements that protect building occupants by slowing the spread of smoke and flames.

Panduit offers a complete plenum-rated solution that allows you to easily connect components in the ceiling. Boxes, jacks, patch cabling, and horizontal cabling deliver the Panduit quality and performance you want, with a UL 2043 classification that you need.

Contact your Panduit sales rep or your local distributor today to see how Panduit can help you connect your enterprise.

Plenum-rated Surface Mount Boxes

Part Number	Description
CBX1*-A	Mini-Com® 1-port low profile surface mount box accepts a single Mini-Com module. UL Rated: UL 1863 and UL 2043. Mounts easily with screws or adhesive tape. Accepts cable sizes through Category 6A.
CBX2*-AY	Mini-Com® 2-port surface mount box accepts up to two Mini-Com modules. Includes built-in removable blank to add a second module. UL Rated: UL 1863 and UL 2043. Mounts easily with screws, adhesive tape or magnet. Accepts cable sizes through Category 6A.
CBXQ1*-A	Mini-Com® 1-port surface mount box with quick release cover, accepts a single Mini-Com module. UL rated: UL 1863 and UL 2043. Mounts easily with screws, adhesive tape or optional magnet. Rear breakout removed. Accepts cable sizes through category 6A
CBXQ2*-A	Mini-Com® 2-port surface mount box with quick release cover, accepts up to two Mini-Com modules. UL rated: UL 1863 and UL 2043. Mounts easily with screws, adhesive tape or optional magnet. Rear breakout removed. Accepts cable sizes through category 6A

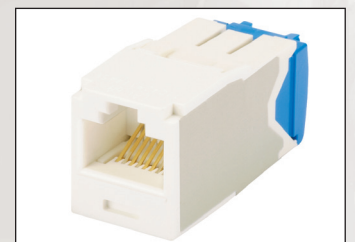
*To designate color, replace * with desired color code: EI (Electric Ivory), IW (Off White), IG (International Gray), WH (White), BL (Black), AW (Arctic White).



Plenum-rated RJ45 Jack Modules

Part Number	Description
CJ6X88TG*	Category 6A, RJ45, 8-position, 8-wire universal jack module with MaTriX technology. Supports high-bandwidth applications and is Ideal for running next generation Power over Ethernet (PoE++). UL Rated: UL 1863 and UL 2043.
CJ688TG*	Category 6, RJ45, 8-position, 8-wire universal jack module. UL Rated: UL 1863 and UL 2043.

To designate color, replace with desired color code: IW (Off White), EI (Electric Ivory), IG (International Gray), AW (Arctic White), BL (Black), BU (Blue), RD (Red), YL (Yellow), GR (Green), OR (Orange), BR (Brown), GD (Gold), LB (Light Blue), PK (Pink) or VL (Violet).



Plenum-Rated Solutions from Panduit®

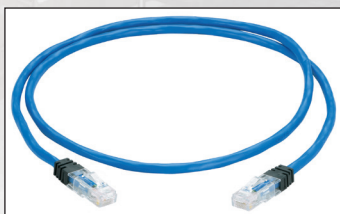
Horizontal Cable



Part Number	Description
PUP6AM04BU*-UG	Category 6A U/UTP Copper Cable with Advanced MaTriX Technology, plenum, 4-pair, blue.
PUP6004BU*-W	Category 6 U/UTP Copper Cable, plenum, 4-pair, blue.

*For additional colors, replace BU (Blue) in part number with WH (White), YL (Yellow), or IG (International Gray)

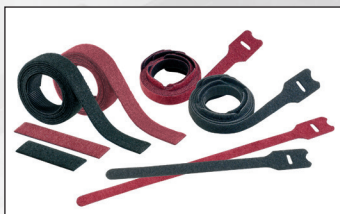
Plenum Cords



Part Number	Description
UXPPBU*	Category 6A UTP cable assembly with modular plugs on each end. Blue, solid cable.
UPPBU*	Category 6 UTP cable assembly with modular plugs on each end. Blue, solid cable.

*Available in one-foot increments from 1-10 feet. Replace * in part number with desired length.

Hook and Loop Cable Ties



Part Number	Description
HLTP2I-X*	Hook and Loop Cable Ties for use in plenum spaces; loop ties with a slot for pre-wrapping of bundles; adjustable, releasable, and re-usable multiple times; 8" length, 0.5" width, maximum bundle diameter of 1.91".

*To designate color, add suffix 12 for Maroon; 0 for Black

J-Pro Cable Supports



Part Number	Description
JP2DW-L20	J-Pro™ Cable Support with clip for use with #12 wire and threaded rod; 2" maximum bundle capacity. Design provides horizontal and vertical bend radius control to preserve cable performance and prevent damage.

Multiple colors and mounting options are available. Contact customer service for additional options.

In-Ceiling Zone Enclosures



Part Number	Description
PZICE*	Plenum-rated Pan-Zone® Passive In-Ceiling Enclosure with hinged door gas-assist air cylinders accepts up to 8 RU of standard 19" patch panels. Includes mounting brackets and integrated horizontal slack manager.
PZICEA*	Plenum-rated Pan-Zone® Active In-Ceiling Enclosure with hinged door gas-assist air cylinders. Accepts up to 2 RU of active equipment and 6 RU of standard 19" patch panels. Includes mounting brackets and integrated horizontal slack manager, AC power provisions, fan assembly, air dam and electrical junction box.

* For low-cost option, add suffix "E" to end of the part number.