

Product Overview

Q1 - 2022



Solder, Desolder & Rework



SMT & Area Array Rework



Fume Extraction

Solutions and systems for soldering, rework and repair of electronics

PAGE[®]
paceworldwide.com



Solder & Rework



PACE HANDPIECES

PACE Heating Technologies

AccuDrive® **AD**

SENSATEMP® **ST**

TD-200 AccuDrive® Tip-Heater Cartridge Iron **AD**

PN: 6010-0166-P1 (Handpiece), 6993-0317-P1 (Kit)

The TD-200 AccuDrive® Tip-Heater Cartridge Soldering Iron combines unsurpassed thermal performance with an ergonomic aluminum handle designed to stay cool and comfortable during extended or continuous soldering. The slim & lightweight handle dramatically reduces grip stress/operator fatigue.

PS-90 Universal Soldering Iron **ST**

SensaTemp PN: 6010-0131-P1 (Handpiece), 6993-0199-P1 (Kit)

The PS-90 is excellent for general purpose and heavy-duty soldering and SMT rework operations where high thermal capacity and flexibility are required. The Iron provides a wide range of SMD and Thru-Hole installation and removal capability as well as unsurpassed thermal performance on heavy, multilayer Thru-Hole assemblies at safe, lower working temperatures.

TJ-70 ThermoJet® **ST**

SensaTemp PN: 6010-0131-P1 (Handpiece), 6993-0199-P1 (Kit)

The TJ-70 ThermoJet® hot air pencil is ideal for delivering heat for the installation and removal of chip components, SOTs, and SOICs. A variety of quick change nozzles are available, to meet your operational needs. Its pencil grip design and finger-actuated control switch facilitates ease-of-use and manipulation in tight places for the precise application of hot air for small SMDs such as 0201s.

MT-200 AccuDrive® MiniTweez® Thermal Tweezer Handpiece **AD**

PN: 6010-0169-P1 (Handpiece), 6993-0321-P1 (Kit)

The MT-200 MiniTweez® is a high-powered precision thermal tweezer designed to rework micro-components such as 0402's, 0603's, 0201's, and even 01005's in a simple, one-handed operation. The MT-200 has been engineered for multi-axis and rotational (theta) tip alignment that provides ultimate control and targeting accuracy. A Tip-Gap Adjustment Wheel adjusts the gap between the tips to reduce the distance from tip-end to tip-end thereby by reducing grip stress and operator fatigue during repetitive operations.

TT-65 ThermoTweez® **ST**

Sensatemp PN: 7025-0001-P1 (Handpiece), 6993-0268-P1 (Kit)

The most versatile and only patented SMT removal tool provides safe, one-handed, rapid reflow and component removal of PLCCs and other 4 or 2 sided SMT components.

SX-100 Sodr-X-Tractor® **ST**

Sensatemp PN: 6010-0106-P1 (Handpiece), 6993-0213-P1 (Kit)

The best performing, in-line, vacuum desoldering tool is ideal for Thru-Hole desoldering when fitted with SX-100 Desoldering Tips, for SMT land clean-up when fitted with SX-100 Flo-D-Sodr® Tips, and for one-handed surface mount component removal when fitted with SMD removal tips.

System	MBT360	MBT250	ST125	ADS200	ST35	ST25
Power Ports	2 AccuDrive® 1 SensaTemp®	3 SensaTemp®	1 SensaTemp®	1 AccuDrive®	1 SensaTemp®	1 SensaTemp®
Snap-Vac® Vacuum/Pressure	Yes	Yes	Yes	X	X	X
TD-200 AccuDrive® Soldering Iron	Yes	X	X	Yes	X	X
MT-200 AccuDrive® MiniTweez®	Yes	X	X	Yes	X	X
SX-100 SensaTemp® Sodr-X-Tractor®	Yes	Yes	Yes	X	X	X
TJ-70 SensaTemp® ThermoJet®	Yes	Yes	Yes	X	X	X
TT-65 SensaTemp® ThermoTweez®	Yes	Yes	Yes	X	Yes	Yes
PS-90 SensaTemp® Universal Soldering Iron	Yes	Yes	Yes	X	Yes	Yes

Production Soldering Stations

ADS200

AccuDrive® AD

PN: 8007-0578 (120V), 8007-0580 (230V)

PACE's ADS200 is a high power, yet low-cost professional soldering station for serious cell-phone repairers, electronics techs, engineers, DIYers & production solder techs.

At the heart of the ADS200 lies PACE's new AccuDrive® temperature control technology, which delivers unsurpassed thermal performance and highly accurate temperatures, *without* the need to change tip cartridges or calibrate. Its advanced electronics provide instantaneous load sensing and on-demand power to quickly reflow solder joints at the lowest, safest temperature required, regardless of the mass of the application. Intended for extreme, multi-shift production use, the ADS200 features a rugged, all-metal design, including housing, soldering iron and tool stand.



ISB Cubby
automatically lowers the temperature when the TD-200 is placed in the stand.



MT-200 MiniTweez®
Can also be powered by the ADS 200 Power Source.



ST25 ST

PN: 8007-0506 (120 V), 8007-0520 (230 V)

The ST25 is an economical, yet rugged soldering system with simplified dial control featuring SensaTemp closed loop temperature technology. Designed for ease of use, there is no programming or complicated controls to worry about.



ADS200 BUNDLE AD

PN: 8007-0593-P1 (120V), 8007-0594 (230V)

The ADS200 Bundles includes the Instant Setback Cubby (ISB) with the TD-200 Iron and our **3 Most Popular Tip-Heater Cartridges:** 1/32" Conical Sharp Extended, 1/32" 30° Chisel, and 1/16" 30° Chisel. ADS200 Bundle with the Standard Cubby is also available (8007-0584 120V) (8007-0588 230V).

Solder & Rework Stations

NEW! ST35 ST

PN: 8007-0599 (115 V), 8007-0600 (230 V)

The ST35 SensaTemp® Soldering Station is our most cost-effective digital soldering station. It's compact and stackable to ensure an efficient workspace.



MBT250 ST

PN: 8007-0349 (120 V), 8007-0353 (230 V)

Our most popular multi-channel Sensatemp Rework System, utilized at all major Army, Navy, Air Force and Marine Corps Depots, with proven system reliability, longevity, durability and sustainability.



NEW! ST125 ST

PN: 8007-0607 (115 V), 8007-0608 (230 V)

Our compact rework station comes with a Hi-Flo Snap-Vac® Pump for both hot-air and vacuum applications and powered with SensaTemp® Heating Technology.



NEW! MBT360 AD ST

PN: 8007-0597 (115 V)(Kit), 8007-0598 (230 V)(Kit)

The MBT360 is truly the best of both worlds, combining our renowned SensaTemp® heating technology, with our new advanced AccuDrive® tip-heater cartridge capability for today's most challenging production soldering and rework applications. Standard packout features: TD-200, MT-200 and SX-100, and **comes complete with tips!**



SMT Rework



Convective systems use **hot air to reflow solder joints** and are often thought of as a “safer” method for removing and installing components from PCBs because of the non-contact process.

ST925 SMT Rework Station

PN: 8007-0576 (120 V), 8007-0577 (230 V)

The ST925 combines three popular PACE products together into one convenient, low-cost SMT Rework System. The system is comprised of the **ST325 Programmable Convective/Hot Air Rework Station**, the **PH100 Low Profile Infrared Preheater** and **ST500A Z-Axis Platform**. Together, the system provides a 575 Watt convective top-side heater plus a 1600 Watt IR bottom-side preheater which allows operators to safely rework PCBs.



ST300

PN: 8007-0427 (120 V), 8007-0428 (230 V)

The ST300 is a self-contained hot-air system with analog (dial) controls for temperature and airflow. The ST 300 can be used to remove any SMD and for installing components that can/positioned manually.



ST325

PN: 8007-0429 (120 V), 8007-0432 (230 V)

The ST325 is a digital, self-contained system that is fully programmable and can be used to remove or install surface mount components. A vacuum pick for holding/lifting components is a standard feature. Handpiece includes spring loaded vacuum pick with 3 sizes of vacuum cups.

IR1000

PN: 8007-0536 (120 V), 8007-0537 (230 V)

The IR1000 is capable of installing and removing passives, QFPs, SOICs, PLCCs, MLFs, TSOPs, and coarse pitched BGAs. It incorporates a 500W top heater and a 400 W pre-heater. The system allows for simple one zone profiles up to more complicated multi zone profiles. The system features a spring loaded, adjustable vacuum pik, a cooling fan, and a built-in, spring loaded, board-holder. The distance between the top heater and PCB can be adjusted and saved in the profile to ensure repeatability.



PACE's family of hot air rework systems are ideal for all SMT applications. A wide range of product features are available to meet your specific needs. They can be easily upgraded by adding one of our powerful pre-heaters and/or PCB holders.



ST400

PN: 8007-0435 (120 V), 8007-0436 (230 V)

The ST400 is an analog (dial), closed loop temperature controlled pre-heater with a 400W radiant (medium/long wave IR) heater. Temperatures range 37°C - 205°C (100°F - 300°F).

PH100

PN: 8007-0563 (120 V), 8007-0564 (230 V)

The PACE PH100 is a high powered (1600W), non-contact infrared(IR) underheating system with an ergonomic, low-profile design which permits operators to safely pre-heat PCB's.



Modular Accessories

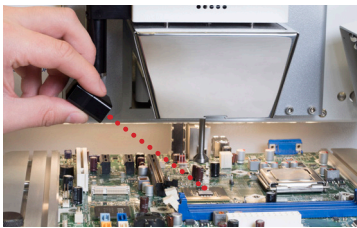
Product	Description	Part Number
ST500 Z-Axis Platform	Z-Axis stand for the ST 300/325 handpiece	6993-0258-P1
ST500A Adjustable Z	Z-Axis stand for the ST 300/325 handpiece/Fits PH-100 Preheater	6993-0258-P1
ST525 PCB Holder	Spring loaded board holder, holds up to 12"x12" PCBs	6993-0253-P1
ST550 PCB Holder	Spring loaded board holder, holds up to 18"x18" PCBs	6993-0254-P1

BGA Rework

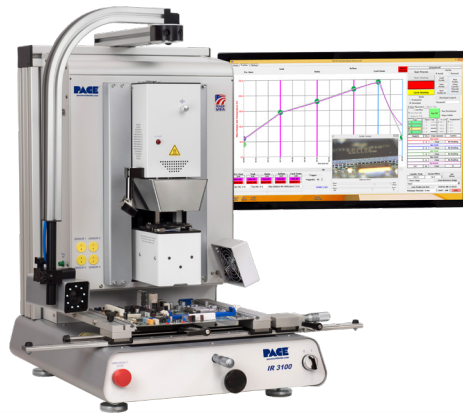


InfraRed

PACE's InfraRed Systems can easily install and remove BGA, QFN, μ BGA/CSP, Flip Chip and other SMD's. Featuring a 500W infrared (IR) top heater and a 1000W IR bottom preheater, the IR3100 does not require nozzles. A specially-developed IR pyrometer provides non-contact, real-time, closed-loop temperature control throughout the reflow process. A Sodr-Cam Reflow Camera comes standard, allowing you to watch the entire reflow process in real time. The IR 3100's newly designed Windows-based software makes profiling incredibly simple for even the most advanced applications, providing intuitive set-up, multi-stage profiling, on-the-fly profile adjustment, flux-dipping, unlimited profile storage and much more.



The Closed-Loop, Non-Contact IR Pyrometer monitors and controls the ramp-rate and temperature of the component in real time, by controlling the top and bottom heaters' output throughout the reflow process.



IR3100

PN: 8007-0586 (120 V), 8007-0587 (230 V)

The IR3100 includes 1550 Watts of total power. Can rework PCBs up to 12" x 12" (305mm x 305mm). Includes a 1000 Watt bottom side pre-heater with an adjustable height of 1.5" (38mm). Also comes with 6 different sized vacuum picks.



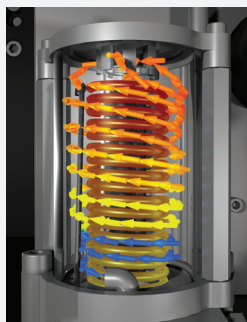
IR4100

PN: v (120 V), 8007-0592 (230 V)

The IR4100 includes 2400 Watts of total power. Can rework PCBs up to 24" x 24" (610mm x 610mm). The bottom-side pre-heater includes a 1000 Watt central heater and (6) 150 Watt peripheral heaters that can be independently controlled.

ThermoFlo[®]

PACE's ThermoFlo[®] Systems' patented Inductive-Convection Heating Technology reaches the target temperature in just seconds for safe, rapid solder joint reflow in virtually any component installation or removal application, while using only a fraction of the power required by yesterday's conventional heating technology. The units contain PACE's latest advanced Profiling Software, a 1080p Vision Overlay system for precise component placement and much more...



The **Inductive Convection Heater** pre-heats the air in a cyclonic fashion around the induction coil before entering the inner chamber, where the air is instantly heated to the target temperature. The low thermal mass design then allows the coil to cool down at a faster rate, consistently yielding high quality solder joints.

To view a complete list of Heat-Focusing Nozzles available for the ThermoFlo[®] Systems Please visit Paceworldwide.com for more information.



TF1800

PN: 8007-0574 (120 V), 8007-0575 (230 V)

The TF1800 includes 1500 Watts of total power. Can work rework PCBs up to 12" x 12" (305mm x 305mm). Includes an adjustable bottom-side pre-heater with 1000 Watts of power and an adjustable height of 1.5" (38mm).



TF2800

PN: 8007-0582 (120 V), 8007-0583 (230 V)

The TF2800 includes 2400 Watts of total power. Can rework PCBs up to 24" x 24" (610mm x 610mm). The bottom-side pre-heater includes a 1000 Watt central heater and (6) 150 Watt peripheral heaters that can be independently controlled.

Fume Extraction



Why is fume extraction needed?

Where manual soldering is being performed or where solder-pots/fountains are utilized, hazardous fumes are produced and workers need to be protected from them. For more information on other collection accessories and replacement filters, please go to www.paceworldwide.com.

Arm-Evac 150

PN: 8889-0150-P1 (120 V) 8889-0155-P1 (230 V)

PACE's Arm-Evac® 150 captures hazardous fumes locally and is suitable for bench top soldering and electronic rework applications. The low-cost Arm-Evac 150 System comes complete with self-supporting SteadyFlex ESD-Safe Arm/Nozzle assembly, Wireless Remote Control and 3-stage filtration system... everything you need to set up one operator!



Steady Flex™ ESD-Safe Arm Nozzle Assembly stays put, exactly where you position it.



10 Air Flow Speed Settings with LED Motor Speed Indicator and Timed Shut-Off feature.



Wireless Remote allows easy operation of most functions, from a distance.



Arm-Evac 105

PN: 8888-0110-P1 (120 V), 8888-0105-P1 (230 V)

The best protection from harmful fumes in its price range, the Arm-Evac 105 is portable, compact and can be easily placed on or under a workbench. The unit features a heavy-duty, maintenance-free brushless motor.



Arm-Evac 200

PN: 8889-0205-P1 (120 V), 8886-0200-P1 (230 V)

The Arm-Evac 200 is designed to meet the needs of light duty production as well as rework and repair operations. Lightweight and compact, the Arm-Evac 200 installs in minutes.



Arm-Evac 250

PN: 8889-0255-P1 (120 V), 8889-0250-P1 (230 V)

The Arm-Evac 250 is ideal for heavy-duty operations that need high-capacity and continuous particle filter monitoring. It incorporates a microprocessor, which displays filter efficiency on an easy-to-read graphical LED monitor.

Fume Collection Accessories give the operator the ability to complement their fume extractor with a variety of fume collection options to suit their immediate needs. **All accessories are compatible with the Arm-Evac 105, 200, and 250 Fume Extractors.**

Fume Collection Accessories	Description	Part Number
24" long by 50mm (2") Diameter ESD Safe Flex Arm	Requires Ext. Kit (8886-0553-P1)	8882-0415-P1
36" long by 50mm (2") Diameter ESD Safe Flex Arm	Requires Ext. Kit (8886-0553-P1)	8882-0435-P1
75mm (3) ESD Safe Flex Arm	Mounts Directly onto Fume Extractor	8886-0750-P1
Metal Plenum	Bench Top Fume Collection	8886-0366-P1

Fume Extraction Filters have been specifically designed for applications in the electronics industry. A wide variety of filtration options are available including our 3-stage Combo Filters. **All Combo Filters and Pre-Filters are compatible with Arm-Evac 105, 150, 200, and 250 Fume Extractors.**

Combo Filters	Description	Part Number
Adhesive Combo Filter	For Adhesives, Solvents and Cleaners	8883-0952-P1
HEPA Combo Filter	For Soldering Requiring High Filter Efficiency (99.99%)	8883-0922-P1
General Purpose Combo Filter	Reduces Normal Volumes of Soldering Fumes (98%)	8883-0932-P1
Pre-Filter for Arm-Evacs 105, 150, 200, & 250	Compatible with all Combo Filters	8883-0112-P5

PACE Worldwide
346 Grant Road
Vass, NC 28394
phone 910.695.7223
fax 910.695.1594

www.paceworldwide.com
www.facebook.com/paceworldwide
www.youtube.com/paceworldwide

