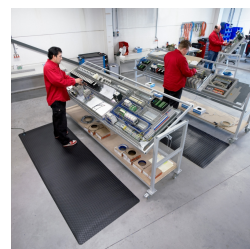
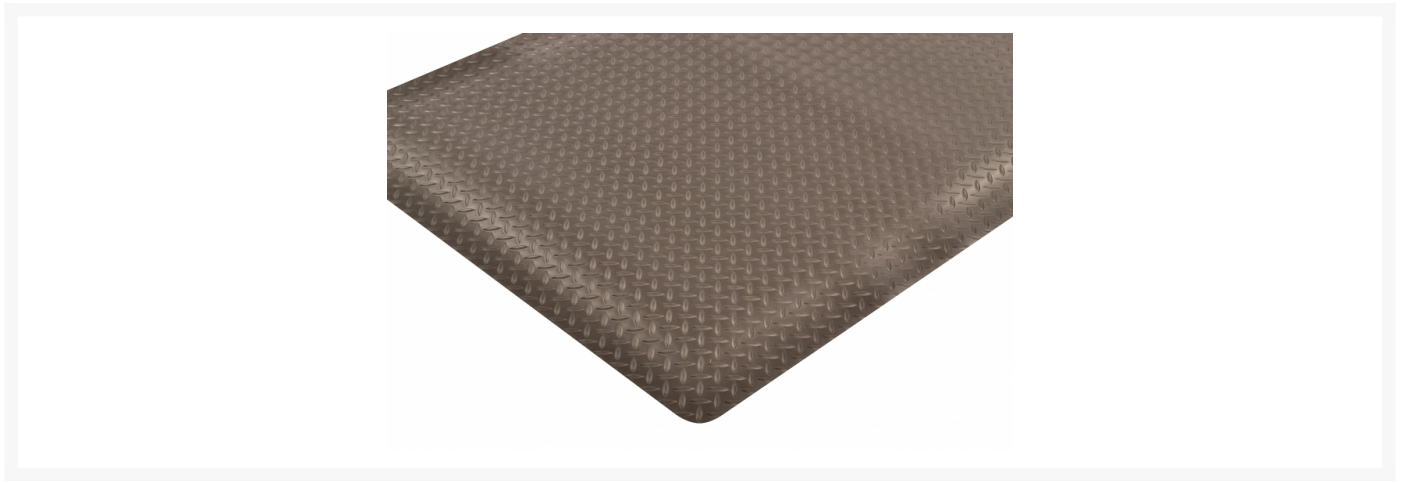




Black Anti-Static Mat, Non-Slip, Diamond Stat™, 826

Product Images





Short Description

- Electrically conductive heavy duty PVC diamond plate top surface provides superior durability and traction
- Meets or exceeds requirements of ANSI/ESD S20.20 and per ANSI/ESD STM7.1
- Resistance Point to Ground (Rtg): 1×10^4 to 1×10^6 ohms
Resistance Point to Point (Rtt): 1×10^4 to 1×10^6 ohms
- Redstop™ non-slip backing to reduce mat slippage
UniFusion™ bond guaranteed for the life of the mat
- Beveled edges on all 4 sides
- Certified by the NFSI (National Floor Safety Institute)
- Grounding cord included, required

Description

Diamond Stat™ is a conductive/anti-static mat designed to absorb static electricity. The mat drains static electricity from the worker keeping sensitive circuitry from being damaged. The durable vinyl diamond-plate design provides non-directional traction and is easy to clean. Diamond Stat™ top surface is combined with a rubber foam base utilizing Notrax® exclusive UniFusion™ technology. This virtually eliminates the possibility of de-lamination. Ergonomic fatigue-reducing rubber foam base that provides superior comfort and support eliminates the slipping and sliding of floor mats on smooth surface flooring such as vinyl composite tile, painted or epoxy coated concrete, vinyl sheet flooring, carpet, and ceramic tile.

Specifications

Model No	826
Available Colors	Black
Overall Thickness	9/16
Roll Sizes	2'x 75'; 3'x 75'; 4'x 75'
Custom Lengths	2', 3' and 4' widths (up to 75' long)
Standard sizes	2'x 3'; 3'x 5'; 3'x 12'
Group	Ergonomic, Anti-fatigue & Safety Matting
Environment	Dry Areas
Special Characteristics	Free of DOP, free of DMF, free of ozone depleting substances, free of silicone and free of heavy metals
Recommended Use	For placement in ESD assembly lines, picking, packing and logistics warehouses, individual work stations.
Special Remarks	For maximum effectiveness, we highly recommend that the end-user properly attaches the grounding cord which is included at no charge. It easily snaps into a grommet which is installed in the mat at our factory.
Surface	Industrial Diamond Plate
Edges	Beveled edges on all sides
Usage Intensity	Heavy duty
Custom Description	Available in stock and rolls sizes and in custom lengths.
Installation	No installation required
Cleaning Remark	Use ESD mat cleaner.
Material Specifications	Static dissipative PVC
Backing	Closed Cell Rubber
Process	Lamination
Weight Lbs/sqft	1.3
Fire Rating US	Pass
REACH Compliant	Reach compliant (Registration, Evaluation, Authorization and Restriction of Chemicals).

Anti-Fatigue Rating	Best
Slip Resistance Rating	Best
Wear Resistance Rating	Best

Prop 65

⚠️WARNING:This product can expose you to chemicals including di-2-ethylhexyl phthalate and/or diisononyl phthalate which is known to the State of California to cause cancer, birth defects or reproductive harm. For more information, visit www.P65Warnings.ca.gov.

Product Options

Dimensions:	2ft x 3ft
	2ft x 75ft
	2ft x Specify Length
	3ft x 12ft
	3ft x 5ft
	3ft x 75ft
	3ft x Specify Length
	4ft x 75ft
	4ft x Specify Length