

Series 160 Disposable Plastic Spiral Bell Mixer

Using simple, time-proven geometry



Series 160, 161, 160A, 160AN, 161A & 161AN

The mixing nozzle has a bell inlet which fit Nordson EFD Valve manifolds and large volume cartridges that separately port the A and B materials directly into the mixer.

Cleanup simply involves removing the mixer and wiping the manifold face clean. In the case of the cartridges, because of the divider fin, simply remove the mixer.

A metal jacket is recommended if the working pressure inside the nozzle exceeds 150 psi (10 bar) (only used with meter mix valves or manifolds).

Specification

- Elements: Acetal
- Housing: Polypropylene

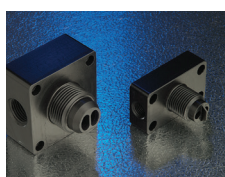
Part #	# Mixing Elements	Element Diameter (inch/mm)	Housing Length (inch/cm)	Outside Diameter (inch/mm)	Outlet Tip Orifice (inch/mm)	Housing Outlet	Pressure Limit (Psi@75°F / Bar@30°C)
7700810	8	0.189 / 4.80	2.62 / 6.65	0.300 / 7.62	0.07 / 1.78	Slip Luer	500 / 34
7026047	8	0.189 / 4.80	2.62 / 6.65	0.300 / 7.62	0.07 / 1.78	LuerLock	500 / 34
7700811	16	0.189 / 4.80	3.90 / 9.91	0.300 / 7.62	0.07 / 1.78	Slip Luer	500 / 34
7700819	24	0.189 / 4.80	5.18 / 13.16	0.300 / 7.62	0.07 / 1.78	Slip Luer	500 / 34
7700817	24	0.189 / 4.80	5.18 / 13.16	0.300 / 7.62	0.07 / 1.78	LuerLock	500 / 34
7700824	32	0.189 / 4.80	6.48 / 16.46	0.300 / 7.62	0.07 / 1.78	Slip Luer	500 / 34
7700822	32	0.189 / 4.80	6.48 / 16.46	0.300 / 7.62	0.07 / 1.78	LuerLock	500 / 34
7700825	48	0.189 / 4.80	9.04 / 22.96	0.300 / 7.62	0.07 / 1.78	Slip Luer	500 / 34
7700826	48	0.189 / 4.80	9.04 / 22.96	0.300 / 7.62	0.07 / 1.78	LuerLock	500 / 34
7700830	8	0.248 / 6.30	3.56 / 9.04	0.370 / 9.40	0.09 / 2.29	Slip Luer	360 / 25
7700829	8	0.248 / 6.30	3.56 / 9.04	0.370 / 9.40	0.09 / 2.29	LuerLock	360 / 25
7700831	16	0.248 / 6.30	5.46 / 13.78	0.370 / 9.40	0.09 / 2.29	Slip Luer	360 / 25
7700834	16	0.248 / 6.30	5.46 / 13.78	0.370 / 9.40	0.09 / 2.29	LuerLock	360 / 25
7700837	24	0.248 / 6.30	7.46 / 18.95	0.370 / 9.40	0.09 / 2.29	Slip Luer	360 / 25
7700850	24	0.248 / 6.30	7.46 / 18.95	0.370 / 9.40	0.09 / 2.29	LuerLock	360 / 25
7700853	24	0.248 / 6.30	7.46 / 18.95	0.370 / 9.40	0.09 / 2.29	LuerLock	360 / 25
7700856	32	0.248 / 6.30	9.49 / 24.10	0.370 / 9.40	0.09 / 2.29	Slip Luer	360 / 25
7700862	32	0.248 / 6.30	9.49 / 24.10	0.370 / 9.40	0.09 / 2.29	LuerLock	360 / 25
7700864	32	0.248 / 6.30	9.49 / 24.10	0.370 / 9.40	0.09 / 2.29	LuerLock	360 / 25



more info



Part #	# Mixing Elements	Element Diameter (inch/mm)	Housing Length (inch/cm)	Outside Diameter (inch/mm)	Outlet Tip Orifice (inch/mm)	Housing Outlet	Pressure Limit (Psi@75°F / Bar@30°C)
7700866	48	0.248 / 6.30	13.14 / 33.38	0.370 / 9.40	0.09 / 2.29	Slip Luer	360 / 25
7700872	48	0.248 / 6.30	13.14 / 33.38	0.370 / 9.40	0.09 / 2.29	LuerLock	360 / 25
7700873	18	0.314 / 8.00	6.96 / 17.68	0.461 / 11.71	0.10 / 2.54	Stepped	330 / 23
7700875	18	0.314 / 8.00	6.96 / 17.68	0.461 / 11.71	0.10 / 2.54	LuerLock	330 / 23
7700876	24	0.314 / 8.00	8.84 / 22.45	0.461 / 11.71	0.10 / 2.54	Stepped	330 / 23
7700878	24	0.314 / 8.00	8.84 / 22.45	0.461 / 11.71	0.10 / 2.54	LuerLock	330 / 23
7700879	32	0.314 / 8.00	11.44 / 29.06	0.461 / 11.71	0.10 / 2.54	Stepped	330 / 23
7700885	12	0.366 / 9.30	5.48 / 13.92	0.510 / 12.95	0.12 / 3.05	Stepped	300 / 21
7700892	12	0.366 / 9.30	5.48 / 13.92	0.510 / 12.95	0.12 / 3.05	LuerLock	300 / 21
7013510	18	0.366 / 9.30	7.28 / 18.49	0.510 / 12.95	0.12 / 3.05	Stepped	300 / 21
7700902	18	0.366 / 9.30	7.28 / 18.49	0.510 / 12.95	0.12 / 3.05	LuerLock	300 / 21
7700904	24	0.366 / 9.30	9.15 / 23.24	0.510 / 12.95	0.12 / 3.05	Stepped	300 / 21
7700924	24	0.366 / 9.30	9.15 / 23.24	0.510 / 12.95	0.12 / 3.05	LuerLock	300 / 21
7700927	30	0.366 / 9.30	11.24 / 28.55	0.510 / 12.95	0.12 / 3.05	Slip Luer	300 / 21
7700931	30	0.366 / 9.30	11.24 / 28.55	0.510 / 12.95	0.12 / 3.05	LuerLock	300 / 21
7700932	40	0.366 / 9.30	14.14 / 35.92	0.510 / 12.95	0.12 / 3.05	Stepped	300 / 21
7700939	40	0.366 / 9.30	14.14 / 35.92	0.510 / 12.95	0.12 / 3.05	LuerLock	300 / 21
7700990	12	0.497 / 12.65	6.71 / 17.04	0.510 / 12.95	0.12 / 3.05	Stepped	270 / 19
7700995	12	0.497 / 12.65	6.71 / 17.04	0.660 / 16.76	0.18 / 4.57	LuerLock	270 / 19
7701001	18	0.497 / 12.65	9.08 / 23.06	0.660 / 16.76	0.18 / 4.57	Stepped	270 / 19
7701007	18	0.497 / 12.65	9.08 / 23.06	0.660 / 16.76	0.18 / 4.57	LuerLock	270 / 19
7701010	24	0.497 / 12.65	11.60 / 29.46	0.660 / 16.76	0.18 / 4.57	Stepped	270 / 19
7701025	24	0.497 / 12.65	11.60 / 29.46	0.660 / 16.76	0.18 / 4.57	LuerLock	270 / 19
7701028	30	0.497 / 12.65	14.09 / 35.79	0.660 / 16.76	0.18 / 4.57	Stepped	270 / 19
7701035	30	0.497 / 12.65	14.09 / 35.79	0.660 / 16.76	0.18 / 4.57	LuerLock	270 / 19
7701038	36	0.497 / 12.65	16.63 / 42.24	0.660 / 16.76	0.18 / 4.57	Stepped	270 / 19
7701042	36	0.497 / 12.65	16.63 / 42.24	0.660 / 16.76	0.18 / 4.57	LuerLock	270 / 19



Accessories

- Dispensing Tips
- Manifold
- Ratio Check Cap and Night Cap
- Retaining Nut
- One-Piece Metall Jacket



For Nordson EFD sales and service in over 40 countries, contact Nordson EFD or go to www.nordsonefd.com.

800-556-3484; +1-401-431-7000
info@nordsonefd.com
infoefd.europe@nordsonefd.com
asia@nordsonefd.com

©2024 Nordson Corporation v010524