



Empowering you to work smarter

## **NSH1** Bluetooth Psychrometer with Digital Display User Manual



**NAVAC Inc.**  
**www.NavacGlobal.com**

Tel/Fax: +1 877 MY-NAVAC  
877 696 2822

MADE IN PRC



Failure to follow warnings could  
result in death or serious injury.

**SAVE THIS MANUAL**  
**FOR FUTURE REFERENCE**

# CONTENTS

I. Safety Information .....	01
II. Product Overview .....	02
III. Technical Specification .....	02
IV. Screen Display .....	03
V. Indicator Light .....	04
VI. Bluetooth Connection .....	05
VII. Device Standby/Off .....	05
VIII. Temperature End Indication .....	05
IX. Button Function .....	05
X. Exploded View .....	06
XI. Download Methods .....	07
XII. Login Methods .....	07
XIII. Page Introduction .....	08

## Warning

This product contains a built-in lithium-ion battery.

- Do not disassemble, puncture, crush, or expose the battery to fire, high temperatures, or water.
- Use only the provided or compatible charger specified in the manual.
- Improper handling of the battery may cause fire, explosion, or serious injury.
- Dispose of the product following local regulations. Do not dispose of it with household waste.

## Dispose of this product correctly



This mark indicates that this product should not be disposed of with other household waste. It is important to prevent uncontrolled waste disposal that may be harmful to the environment or human health, please use a return and collection system or contact the retailer from whom you purchased the product. They can recycle this product in an environmentally safe manner.

## I. Safety Information

Please read this manual carefully before operating, overhauling, or maintaining the product.

Doing so will help ensure long-term stable performance and provide a comprehensive understanding of the safety considerations and precautions associated with its use and operation.

Please carefully check if the product you received matches the one you ordered and ensure that the accessories and instruction manual are complete. In addition, inspect for any damage that may have occurred during transportation. If you notice any of these issues, kindly contact our marketing department or local distributor promptly.

Reading the manual carefully and following the correct operating procedures will help ensure safe usage and extend the equipment's service life.

Follow these guidelines to prevent personal injury or death:

- Most governments and regulatory authorities require HVAC technicians to be trained and certified in the safe and proper operation of HVAC tools, such as this instrument.
- Read the entire user manual before using the instrument.
- Use the instrument only as specified in this user manual. Failure to comply may impair the protection provided by the equipment.
- Before using the instrument, inspect the case for any cracks or loose components. Do not use the instrument if it is damaged.
- The instrument contains no internal, user-serviceable parts.
- Do not open the instrument.
- Do not use the instrument if it operates abnormally, as this may impair its protection. If in doubt, have the instrument serviced.
- Do not operate the instrument near explosive gases, vapor, or dust.

## Warning

This product operates under high pressure. Follow all safety guidelines regarding refrigerant handling including wearing Personal Protective Equipment such as safety glasses, and gloves.

## II. Product Overview



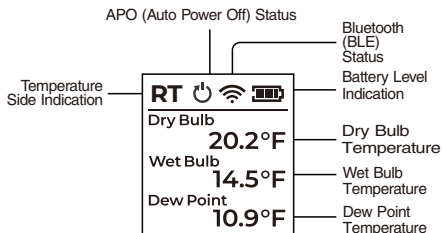
## III. Technical Specification

Model	NSH1
Measuring Range	0~100%RH, -40°F~249.8°F
Measuring Accuracy	±1.08°F (-4°F to 32°F) ±0.9°F (32°F to 140°F) ±1.26°F (140°F to 248°F)
Resolution	0.1%RH, 0.18°F
Working Environment	14-122°F, <75% RH
Battery	3.7V 1200mAh lithium Battery
Bluetooth Range	164 ft (50m) line of sight

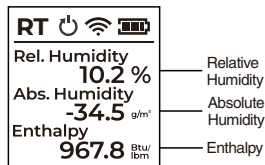


## IV. Screen Display

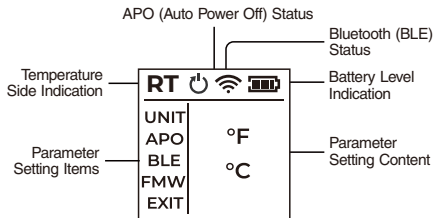
### Temperature Interface:



### Humidity Interface:



### Parameter Setting Interface:






Parameter Setting Items	Parameter Setting Content
UNIT (pressure unit)	psi, MPa, bar, kgf/cm <sup>2</sup> , KPa
APO (Automatic power off)	ON, OFF
BLE (Bluetooth switch)	ON, OFF
FMW (Hardware information)	VER: Hardware version; MAC: Bluetooth address
EXIT (Exit Project)	Return to home screen

## V. Indicator Light

- Power Status
  - Powered On: Green light stays on.
  - Powered Off: Red light stays on.
- Screen-On Mode
  - Green light blinks when buttons are pressed.
- Screen-Off Mode
  - Bluetooth Connected: Green light flashes.
  - Bluetooth Not Connected/Broadcasting: Yellow light flashes.

## VI. Bluetooth Connection

- Bluetooth Disconnected or Broadcasting: The  Bluetooth icon blinks on the display.
- Bluetooth Connected: The  Bluetooth icon remains steady.
- Bluetooth Off: The  Bluetooth icon is not displayed.

## VII. Device Standby/Off

The device will automatically enter standby mode and turn off the screen after 1 minute of inactivity.

It will automatically power off if it has not been operated for 1 hours.

## VIII. Temperature End Indication

Rotate the rotary knob fully to the left to display the RT side on the device.

Rotate the rotary knob fully to the right to display the SP side on the device.

## XI. Button Function

Power on/off: Press and hold the button for at least 2 seconds to turn the power on. To turn it off, press and hold the button for at least 2 seconds after the device has been powered on.

### Function operation:

Click the button to switch between the temperature and humidity interfaces.

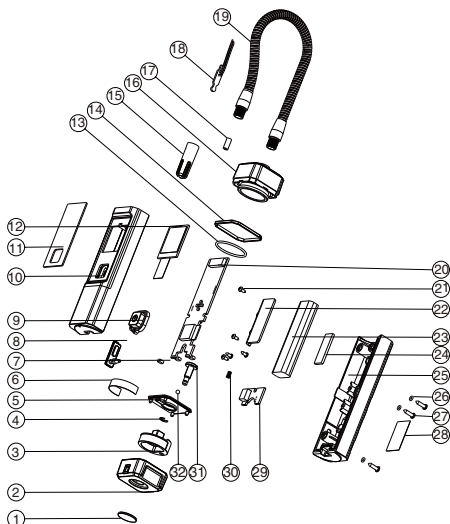
### Double-click the button to access the parameter interface:

- Click on the parameter interface to switch through the parameter setting items on the left side, in the following cyclic order: temperature unit, auto-shutdown function, Bluetooth switch, and device information.
- Double-click on the parameter interface to enter the parameter setting content selection on the right side.
- To enter the correct parameter setting content, click to switch the option, then double-click to confirm.

### CAUTION:

Please do not use this device for a long period of time in <10%RH or >90%RH environments, otherwise accuracy of humidity detection will be degraded.

## X. Exploded View



## Spare Parts List

No.	Item	No.	Item
1	Decorative Cover Plate	17	Wire Sleeve
2	Square Knob	18	Sensor PCBA
3	Fixed Seat	19	Metal Hose
4	Opening Retainer	20	PCBA
5	Knob Cover	21	Self-Tapping Screws
6	Logo label	22	Battery Plate
7	Magnets	23	Lithium Battery
8	Rubber Stopper	24	Magnets
9	Button	25	Back Cover
10	Front Cover	26	O-Ring
11	Window	27	Self-Tapping Screws
12	Display	28	Name Plate
13	O-Ring	29	Charging Adapter Plate
14	Decorative Rings	30	Spring
15	Protective Sleeve	31	Fixed Stud
16	Top Cover Assembly	32	Ball Bearing

## XI. Download Methods

## For Apple:

Search for "myNAVAC" in the App Store, then download and install the app.



iOS Download  
(iOS 12.0 or above)

## For Android:

Search for "myNAVAC" in the Google Play Store, then download and install the app.



Android Download  
(Android 7.0 or above)

## XII. Login Methods

## Account login:

A network connection is required. All data records are stored on the background server.

## Visitor mode:

No network connection is required. All data records are stored locally on the mobile phone.

## XII. Page Introduction

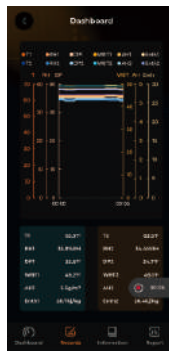
### Main Interface:



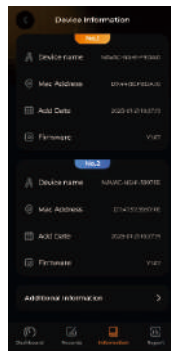
### Dashboard Page:



### Chart Record:



### Device Information:



### Setup Interface:

