

NAVAC

Empowering you to work smarter

Cordless Power Flaring Tool

User Manual

NEF6LM



Failure to follow warnings could result in death or serious injury.

**SAVE THIS MANUAL
FOR FUTURE REFERENCE**

NAVAC Inc.
www.NavacGlobal.com

T +1 201.939.6699

F +1 201.939.3899

MADE IN CHINA

BREAKFREE
CORDLESS SERIES

Contents

Structure and Technical Parameters..... 01

Operation Instruction..... 03

Troubleshooting..... 05

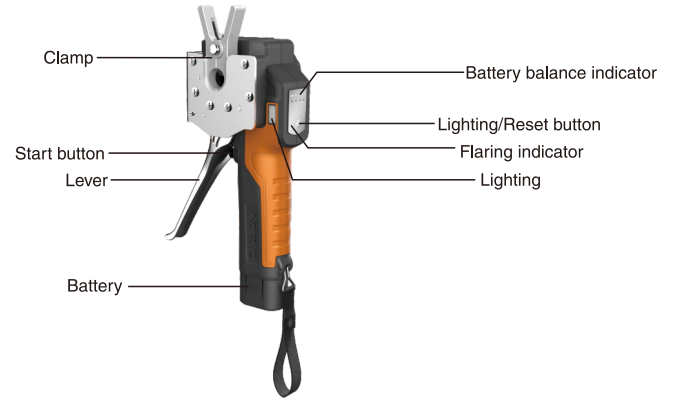
Exploded View and Parts List..... 06

Safety Guide

Caution: Read this manual thoroughly before using.

- Keep the working area clean and tidy.
- Don't operate in tiredness or drunkenness.
- Keep children and untrained people from using.
- Use original parts and auxiliary.
- Long time using may overheat its motor which activate overheat protection.
- Temperature higher than 158°F (70°C) or lower than 41°F (5°C) may activate the motor overheat or subcooled protection.
- Don't dismantle NEF6LM at random which may void warranty.
- Product is warranted against defects in materials and workmanship for two years from the date of purchase.
- Dispose the battery according to local regulations.
- Pending patent.

Structure



Technical Parameters

Model	NEF6LM
Tubing Type	Copper
Tubing OD	1/4", 3/8", 1/2", 5/8", 3/4"
Power	DC motor
Cone Speed	120 RPM
Battery Capacity	Up to 100 flares per charge
Time to Flare	Complete a flare in < 30 seconds
Dimension	10"x4"x4" (265x101x100mm)
Weight	2.9 lbs (1.3kg)

Battery pack

Battery	7.4V 2Ah 14.8Wh
Quick Charge	30 minutes
Ambient Temperature	41°F-104°F (5°C-40°C)

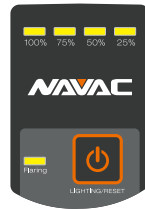
Charger

Power Supply	AC 100-240V (50/60Hz) 50W
Output Voltage	8.4V
Output Current	3.5A
Ambient Temperature	41°F-104°F (5°C-40°C)

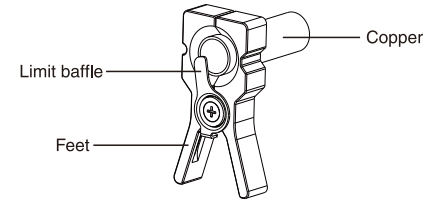
Table 1

Lighting/Reset Button:

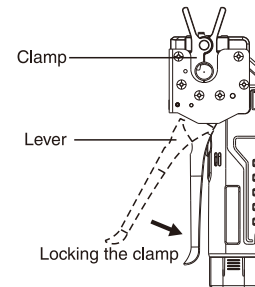
- Press to show the battery balance.
- Press to turn on/off the light.
- Press 2 seconds to draw back the cone.

**Operation Instruction****1. Get the copper placed.**

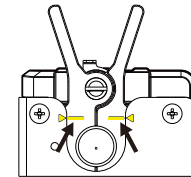
- Press the feet of the clamp to get in the copper.
- Use the baffle to limit the copper.

**Figure 1****2. Get the clamp placed.**

- Keep the lever open and put in the clamp. A locked lever resists the clamp being placed.
- Push the lever inward to lock the clamp.

**Figure 2**

Caution:
Make sure here is in a line. Otherwise it may cause a defective flare and damage the clamp.

**Figure 3****3. Press the START button to flare.****Caution:**

- Don't open the lever during flaring, otherwise the automatic flaring stops.
- If it happens, press the reset button 2 seconds to draw back the cone.
- Make sure the clamp is still horizontally placed.
- Press inward the lever to lock the clamp again.
- Press the start button to reflare.

4. It takes less than 30 seconds to complete a flaring automatically.

- After the flaring indicator turns off, open the lever.
- Get out the clamp and copper.

Battery Charge

1. Charge battery when the last indicator flashes which means low battery.

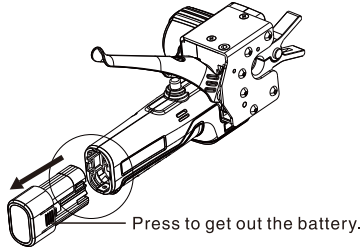


Figure 4

2. Make sure the battery pack is connected properly.

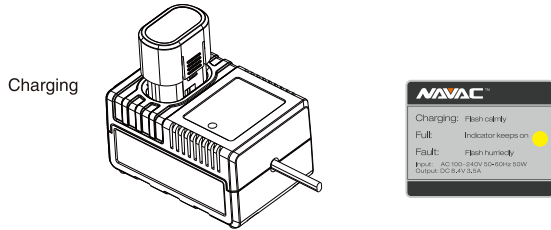


Figure 5

3. Place back the battery pack.

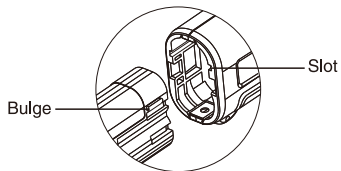


Figure 6

Troubleshooting

Problem	Possible cause	Solution
Flaring indicator flashes once cyclically.	Short circuit.	Contact NAVAC TechSupport.
Flaring indicator flashes twice cyclically.	Battery ID not recognized.	Use an original battery.
Flaring indicator flashes three times cyclically.	Overheat or subcooled of the battery pack.	Cool down or warm up the battery pack.
Flaring indicator flashes four times cyclically.	Overload. Or the cone cannot be reset.	Contact NAVAC TechSupport.
Charger indicator flashes hurriedly.	Battery damaged.	Try another battery.
It does not flare or it stops during flaring.	Low battery balance.	Charge the battery.
	Motor or circuit board failure.	Contact NAVAC TechSupport.
	Dirty on the batter connections.	Clean the connections.
The copper flare is too small.	Lever's locking is loose.	Tighten the lever. (Figure 7)
	Copper does not touch the baffle.	Make them contact.
	Copper not deburred.	Debur the copper.

Table 2

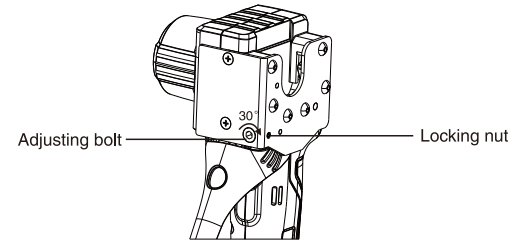


Figure 7

Caution:

- To tighten the lock, loose the locking nut first.
- Then turn the bolt clockwise 30 degree each time to check the tightness.
- Don't turn clockwise too much each time because it may over-tight the lever and cause damage.

Exploded View

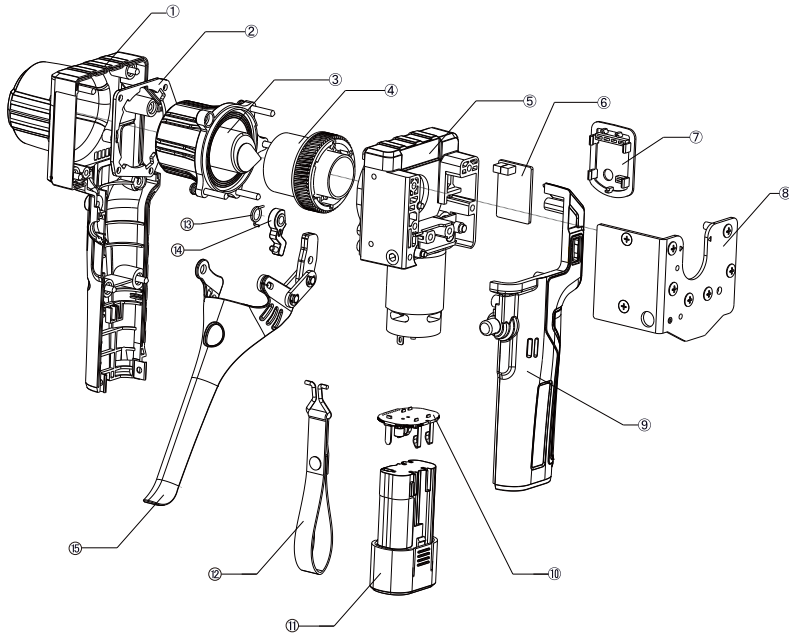


Figure 8

Spare Parts List

Ref No.	Part No.	Item
1	PNEF001	Right Cover
2	PNEF002	Plate
3	PNEF003	Axis Assembly
4	PNEF004	Turbine Bushing
5	PNEF005	Motor and Chamber
6	PNEF006	Circuit Board
7	PNEF007	Display Panel
8	PNEF008	Dam-board
9	PNEF009	Left Cover
10	PNEF010	Motor Control Board
11	PNEF011	Battery Pack
12	PNEF012	Strap
13	PNEF013	Spring
14	PNEF014	Switch
15	PNEF015	Lever

Table 3