



Item # _____

We put space to work.

Job _____

Super Erecta® qwikSLOT® Shelving

Reduce operating costs | Improve efficiency | Increase flexibility

Benefits

Super Erecta qwikSLOT shelving is one of the most flexible and adjustable shelving systems available. Incorporating the strength and attractive look of the Super Erecta design, Super Erecta qwikSLOT shelving is the easiest system to assemble and adjust, designed to meet your changing needs.

- **Versatile Construction:** Super Erecta qwikSLOT wire shelving can change as your needs change. Use any Super Erecta accessory to create the configuration best suited to your requirements. Shelves can be slanted for gravity flow or merchandising applications desiring increased visibility.
- **Fast Adjustability:** The unique design of qwikSLOT shelving allows for the addition, removal, or adjustment of intermediate shelves easily in seconds, at 1" (25 mm) increments.
- **High-Density Storage:** Unique qwikSLOT Drop Mat™ shelves are available to maximize vertical storage density, increasing capacity as much as 30%.
- **Attractive:** Available in Super Erecta Brite, providing the look of chrome at less cost. Also available in black, white, smoked glass and 3 designer colors.

Features

- No tools required for assembly.
- Shelf rests securely on support clips. Posts are slotted at 1" (25 mm) increments to accommodate clips.
- Shelf height can be adjusted in one inch increments.
- Shelves can be slanted (see details).
- High-density qwikSLOT Drop Mat shelves with built-in ledge provides security, prevents contents from falling off shelf.
- Use any Super Erecta shelving accessory.
- Available in Super Erecta Brite® finish: chrome look, less cost.
- Available in 4 colors.
- Optional casters can be added for mobile units.
- Load capacity (evenly distributed):
Each qwikSLOT shelf is rated at 300 lbs. (135 kg).
Each Drop Mat qwikSLOT shelf is rated at 250 lbs. (113kg).



qwikSLOT® Shelving System

Metal shelf clip included with qwikSLOT® shelf.



Drop Mat™ Close up



qwikSLOT® Drop Mat™ Shelving System

All Metro Catalog Sheets are available on our website: www.metro.com



InterMetro Industries Corporation
North Washington Street, Wilkes-Barre, PA 18705
Product Information. U.S. and Canada: 1.800.992.1776
Outside U.S. and Canada: www.metro.com/contactus

LO3-053
Printed in U.S.A. 1/21
Information and specifications are subject to change without notice. Please confirm at time of order.

Copyright © 2021 InterMetro Industries Corp.



Super Erecta® qwikSLOT® Shelving

10.11



Super Erecta® qwikSLOT® Shelving

qwikSLOT® Posts

Clips snap into slots along the height of the post for shelf adjustment at 1" (25mm) intervals. Use for qwikSLOT shelving only.

Dimensions Height (in.)	Approx. Pkd. Wt. (lbs.)	Approx. Pkd. Wt. (kg)	Stationary					Mobile				
			Plated Cat. No.	Black Cat. No.	White Cat. No.	Smoked Glass Cat. No.	Copper Hammerstone Cat. No.	Plated Cat. No.	Black Cat. No.	White Cat. No.	Smoked Glass Cat. No.	Copper Hammerstone Cat. No.
34.5 x 875	2	0.9	33PQ	33PQBL	33PQW	33PQ-DSG	33PQ-DCH	33UPQ	33UPQBL	33UPQW	33UPQ-DSG	33UPQ-DCH
54.56 x 1385	3	1.4	54PQ	54PQBL	54PQW	54PQ-DSG	54PQ-DCH	54UPQ	54UPQBL	54UPQW	54UPQ-DSG	54UPQ-DCH
63.56 x 1590	3.5	1.6	63PQ	63PQBL	63PQW	63PQ-DSG	63PQ-DCH	63UPQ	63UPQBL	63UPQW	63UPQ-DSG	63UPQ-DCH
74.62 x 1895	4	1.8	74PQ	74PQBL	74PQW	74PQ-DSG	74PQ-DCH	74UPQ	74UPQBL	74UPQW	74UPQ-DSG	74UPQ-DCH
86.62 x 2200	5	2.3	86PQ	86PQBL	86PQW	86PQ-DSG	86PQ-DCH	86UPQ	86UPQBL	86UPQW	86UPQ-DSG	86UPQ-DCH

qwikSLOT® Shelves (Intermediate)

Intermediate qwikSLOT shelves may be added or removed without disturbing shelves above or below. qwikSlot shelving can also be angled for improved visibility.

Dimensions (in.) Width / Length	Dimensions (mm) Width / Length	Approx. Pkd. Wt. (lbs.)	Approx. Pkd. Wt. (kg)	Super Erecta Brite Cat. No.	Chrome Cat. No.	Black Cat. No.	White Cat. No.	Smoked Glass Cat. No.	Copper Hammerstone Cat. No.
14 x 36	355 910	7.25	3.2	1436QBR	1436QC	1436QBL	1436QW	1436Q-DSG	1436Q-DCH
14 x 48	355 1220	9.75	4.3	1448QBR	1448QC	1448QBL	1448QW	1448Q-DSG	1448Q-DCH
18 x 36	455 910	8.5	3.8	1836QBR	1836QC	1836QBL	1836QW	1836Q-DSG	1836Q-DCH
18 x 48	455 1220	11.25	5.0	1848QBR	1848QC	1848QBL	1848QW	1848Q-DSG	1848Q-DCH
18 x 60	455 1525	17.0	8.6	1860QBR	-	-	-	-	-
21 x 36	530 910	10.75	4.8	2136QBR	2136QC	2136QBL	2136QW	2136Q-DSG	2136Q-DCH
21 x 48	530 1220	13.25	5.9	2148QBR	2148QC	2148QBL	2148QW	2148Q-DSG	2148Q-DCH
21 x 60	530 1525	16.0	7.5	2160QBR	-	-	-	-	-
24 x 36	610 910	12.25	5.5	2436QBR	2436QC	2436QBL	2436QW	2436Q-DSG	2436Q-DCH
24 x 48	610 1220	15.25	6.8	2448QBR	2448QC	2448QBL	2448QW	2448Q-DSG	2448Q-DCH
24 x 60	610 1525	21.00	9	2460QBR	-	-	-	-	-

9985QSL Pkg of 4 Locking clips

Note: A typical unit will incorporate 4 qwikSLOT posts, at least 2 Super Erecta shelves (one at the top and bottom of unit) and as many qwikSLOT shelves as desired between the top and bottom shelf. A three sided frame is recommended for increased rigidity.

Note: A qwikSLOT shelf is rated at 300 lbs. (135kg) per shelf. A typical qwikSLOT unit is rated at 800 lbs. (375kg) capacity per unit. For higher unit capacities, an intermediate standard Super Erecta shelf must be installed approximately at mid-height on the unit.

Note: Mobile Applications: All mobile applications require an intermediate standard Super Erecta shelf, installed approximately at mid-height on the unit. Mobile posts come without leveling bolt assembly to accommodate stem casters. The qwikSLOT lock clip (9985QSL) is recommended for mobile applications.

qwikSLOT® Drop Mat™ Shelves (Intermediate)

Drop Mat shelving can increase storage capacity by as much as 30%. Each shelf holds up to 250 pounds (113kg). qwikSLOT style promotes ease of adjustment and removal. Each qwikSLOT unit requires the use of a Super Erecta or Drop Mat Super Erecta shelf at top and bottom. Use with qwikSLOT posts.

Dimensions (in.) Width / Length	Dimensions (mm) Width / Length	Approx. Pkd. Wt. (lbs.)	Approx. Pkd. Wt. (kg)	Super Erecta Brite Cat. No.	Chrome Cat. No.	Black Cat. No.	White Cat. No.	Smoked Glass Cat. No.	Copper Hammerstone Cat. No.
14 x 36	355 910	7.25	3.2	HDM1436QBR	HDM1436QC	HDM1436QBL	HDM1436QW	HDM1436Q-DSG	HDM1436Q-DCH
14 x 48	355 1220	9.75	4.3	HDM1448QBR	HDM1448QC	HDM1448QBL	HDM1448QW	HDM1448Q-DSG	HDM1448Q-DCH
18 x 36	455 910	8.5	3.8	HDM1836QBR	HDM1836QC	HDM1836QBL	HDM1836QW	HDM1836Q-DSG	HDM1836Q-DCH
18 x 48	455 1220	11.25	5.0	HDM1848QBR	HDM1848QC	HDM1848QBL	HDM1848QW	HDM1848Q-DSG	HDM1848Q-DCH
21 x 36	530 910	10.75	4.8	HDM2136QBR	HDM2136QC	HDM2136QBL	HDM2136QW	HDM2136Q-DSG	HDM2136Q-DCH
21 x 48	530 1220	13.25	5.9	HDM2148QBR	HDM2148QC	HDM2148QBL	HDM2148QW	HDM2148Q-DSG	HDM2148Q-DCH
24 x 36	610 910	12.25	5.5	HDM2436QBR	HDM2436QC	HDM2436QBL	HDM2436QW	HDM2436Q-DSG	HDM2436Q-DCH
24 x 48	610 1220	15.25	6.8	HDM2448QBR	HDM2448QC	HDM2448QBL	HDM2448QW	HDM2448Q-DSG	HDM2448Q-DCH

9985QSL Pkg of 4 Locking clips

Note: A typical unit will incorporate 4 qwikSLOT posts, at least 2 Super Erecta shelves (one at the top and bottom of unit) and as many qwikSLOT shelves as desired between the top and bottom shelf. A three sided frame is recommended for increased rigidity.

Note: A qwikSLOT Drop Mat shelf is rated at 250 lbs. (113kg) per shelf. A typical qwikSLOT unit is rated at 800 lbs. (375kg) capacity per unit. For higher unit capacities, an intermediate standard Super Erecta shelf must be installed approximately at mid-height on the unit.

Note: Mobile Applications: All mobile applications require an intermediate standard Super Erecta shelf, installed approximately at mid-height on the unit. The qwikSLOT lock clip (9985QSL) is recommended for mobile applications.

Super Erecta® qwik SLOT® Shelving



Super Erecta® Shelves (Top/Bottom)

WIRE

Dimensions (in.) Width / Length		Dimensions (mm) Width / Length		Approx. Pkd. Wt. (lbs.) (kg)		Super Erecta Brite Cat. No.	Chrome Cat. No.	Black Cat. No.	White Cat. No.	Smoked Glass Cat. No.	Copper Hammertone Cat. No.
14 x 36	355	910	8	3.6	1436BR	1436NC	1436NBL	1436NW	1436N-DSG	1436N-DCH	
14 x 48	355	1220	10.5	4.7	1448BR	1448NC	1448NBL	1448NW	1448N-DSG	1448N-DCH	
18 x 36	455	910	9.5	4.3	1836BR	1836NC	1836NBL	1836NW	1836N-DSG	1836N-DCH	
18 x 48	455	1220	12	5.4	1848BR	1848NC	1848NBL	1848NW	1848N-DSG	1848N-DCH	
18 x 60	455	1525	17	7.7	1860BR	1860NC	1860NBL	1860NW	1860N-DSG	1860N-DCH	
21 x 36	530	910	11	5.0	2136BR	2136NC	2136NBL	2136NW	2136N-DSG	2136N-DCH	
21 x 48	530	1220	14	6.4	2148BR	2148NC	2148NBL	2148NW	2148N-DSG	2148N-DCH	
21 x 60	530	1525	18	8.2	2160BR	2160NC	2160NBL	2160NW	2160N-DSG	2160N-DCH	
24 x 36	610	910	13	5.9	2436BR	2436NC	2436NBL	2436NW	2436N-DSG	2436N-DCH	
24 x 48	610	1220	16	7.3	2448BR	2448NC	2448NBL	2448NW	2448N-DSG	2448N-DCH	
24 x 60	610	1525	21	9.5	2460BR	2460NC	2460NBL	2460NW	2460N-DSG	2460N-DCH	

SOLID

Dimensions (in.) Width / Length	Dimensions (mm) Width / Length	Approx. Pkd. Wt. (lbs.) (kg)	GALVANIZED		STANDARD STAINLESS STEEL			
			Flat Cat. No.	Louvered/Embossed Cat. No.	Flat Cat. No.	Louvered/Embossed Cat. No.		
14 x 36	355	914	14	6.4	1436FG	1436LG	1436NFS	1436LS
14 x 48	355	1219	17	7.7	1448FG	1448LG	1448NFS	1448LS
18 x 36	457	914	16	7.3	1836FG	1836LG	1836NFS	1836LS
18 x 48	457	1219	20	9.1	1848FG	1848LG	1848NFS	1848LS
18 x 60	457	1524	24	10.9	1860FG	1860LG	1860NFS	1860LS
21 x 36	530	914	18	8.2	2136FG	2136LG	2136NFS	2136LS
21 x 48	530	1219	23	10.4	2148FG	2148LG	2148NFS	2148LS
21 x 60	530	1524	26	11.8	2160FG	2160LG	2160NFS	2160LS
24 x 36	610	914	19	8.6	2436FG	2436LG	2436NFS	2436LS
24 x 48	610	1066	24	10.9	2448FG	2448LG	2448NFS	2448LS
24 x 60	610	1524	31	14.0	2460FG	2460LG	2460NFS	2460LS

Note: With 14" (355mm) shelving, foot plates must be used on freestanding units; on mobile units, maximum post height is 54" (1370mm).
Note: 14" (455mm) wide shelving is not recommended for use with posts higher than 74" (1880mm).



qwik SLOT® Drop Mat™ Shelving System
 Shown with standard solid Super Erecta® bottom shelf



qwik SLOT® Locking Clip
 Optional for use with metal shelf clips. Required for mobile applications.
 Cat. No. 9985QSL (4-Pk.)



Casters
 Types available for all mobile applications.

Epoxy Colors



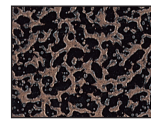
Black



White



Smoked Glass



Copper Hammertone (CH)

Super Erecta® qwikSLOT® Shelving



We put space to work.®

Shelf Adjustment

Instant shelf adjustment without disturbing the shelves below or above. Simply raise shelf and move clips to desired spot for repositioning.



Specifications

- General:** Storage system shall be the type commercially designated as Super Erecta qwikSLOT, manufactured by InterMetro Industries Corporation.
- Materials:** Shelves shall be made of: a) carbon steel, Super Erecta Brite zinc chromate finish, with a final clear coating; b) nickel-chrome finish with a final clear coating; c) epoxy coated in a Metro standard or designer color.
- Shelves:** The shelves have corrugated reinforcing on all four sides. The front and back reinforcing members consist of a 1/4" diameter wire upper rib; another 1/4" diameter wire parallel rib located approximately 15/16" below it, and a corrugated truss of either #7 gauge or #5 gauge wire, depending on shelf size, placed between the two 1/4" diameter wires on the bottom. The construction of the two side reinforcing members are similar with the exceptions that the bottom 1/4" diameter wire is 13/16" below the top wire and that the corrugated truss is alternately welded directly to the 1/4" diameter wires. Depending on the width and length of the shelf it may have corrugated reinforcing in the interior of the shelf running the length of the shelf. On the 14" and 18" width in lengths of 60" and 72"; on the 21" width in lengths of 24", 30", 36", 42", 48", 60" and 72" and on the 24" width in lengths of 24", 30", 36", 42", 48", and 60" — all have one interior member. On the 24" width in the length of 72" there are two interior members. These interior members consist of the #6 gauge support rib previously mentioned with a 1/4" diameter wire parallel rib located approximately 15/32" below it, and a corrugated truss of either #7 gauge or #5 gauge wire, depending on shelf size, placed between the #6 gauge and the 1/4" diameter wire and alternately welded to them.
- Posts:** The vertical support posts are 1" outside diameter. They are ringed with rolled grooves 1" apart along their length. They have a key slot hole 1" apart between each rolled groove. The top of the post is capped with a plastic closure, and at the base of the post, for stationary applications, there is a cast foot with an adjustable bolt.
- Assembly Method:** No tools are required for assembly. For qwikSLOT shelves, a shelf support clip is installed in the desired key slot on each post. The given shelf rests securely in the support clips. For standard Super Erecta Shelves, assembly consists of a tapered sleeve which, when snapped around a post at the desired shelf location, creates a fastening effect between an internal bead in the tapered sleeve and the groove in the post. The remittent tapered surface is contacted by the matching tapered surface within each shelf corner, with increasing shelf loads adding to the securing effect.
- Shelf Slant:** Any qwikSLOT shelf can be angled 10° simply by adjusting the rear clips 2" (51 mm) higher than the front clips. For a slanted shelf with a 45° slope, simply install a qwikSLOT shelf that is one width-size size larger than the top and bottom Super Erecta collared shelf.
*See chart below.

qwikSLOT® Shelf Slant

Angle	Collared Shelf (in.) (mm)		qwikSLOT Shelf (in.) (mm)		Angle	Collared Shelf (in.) (mm)		qwikSLOT Shelf (in.) (mm)	
10°	14	356	14	356	45°	14	356	18	457
10°	18	457	18	457	45°	18	457	21	533
10°	21	533	21	533	45°	21	533	24	610
10°	24	610	24	610					