



## TTRU3

True 3 $\emptyset$  Transformer Turns Ratiometer  
USER MANUAL



# TTRU3

## True 3Ø Transformer Turns Ratiometer

### User Manual

#### NOTICE OF COPYRIGHT & PROPRIETARY RIGHTS

© 2016-2018, Megger Valley Forge. All rights reserved.

The contents of this manual are the property of Megger Valley Forge. No part of this work may be reproduced or transmitted in any form or by any means, except as permitted in written license agreement with Megger Valley Forge. Megger Valley Forge has made every reasonable attempt to ensure the completeness and accuracy of this document. However, the information contained in this manual is subject to change without notice, and does not represent a commitment on the part of Megger Valley Forge. Any attached hardware schematics and technical descriptions, or software listings that disclose source code, are for informational purposes only. Reproduction in whole or in part to create working hardware or software for other than Megger Valley Forge products is strictly prohibited, except as permitted by written license agreement with Megger Valley Forge.

#### TRADEMARK NOTICES

Megger® is trademark registered in the U.S. and other countries. All other brand and product names mentioned in this document are trademarks or registered trademarks of their respective companies.

Megger Valley Forge is certified according to ISO 9001

#### Address:

Megger Valley Forge  
2621 Van Buren Ave  
Norristown, PA 19403 USA

T +1 610 676 8500      sales@megger.com  
F +1 610 676 8610      www.megger.com

Document Version: TTRU3\_UG\_EN\_v01

## Contents

<b>1 Introduction.....</b>	<b>6</b>	<b>5 Operation .....</b>	<b>20</b>
1.1 Receipt of product .....	6	5.1 Initialization & Interface .....	20
1.2 Product overview .....	6	5.2 Options.....	20
1.3 Step Up vs Step Down .....	6	5.3 Confirm/Cancel.....	20
1.4 Model Variation & Accessories .....	7	5.4 Menu Bar.....	20
1.5 Top Panel.....	8	5.5 Home Screen .....	21
1.6 Side Panel.....	9	5.6 Help Screen .....	21
1.7 Quick Start & Feet.....	10	5.7 Settings Screen .....	23
<b>2 Safety.....</b>	<b>12</b>	5.8 Measurement & Limits .....	24
2.1 Responsible User.....	12	5.9 Transformer Nameplate.....	24
2.2 Symbols.....	12	5.10 Regional .....	27
2.3 General Precautions .....	12	5.11 Display.....	28
2.4 Input Power Precautions .....	13	5.12 OLTC .....	29
<b>3 Specifications .....</b>	<b>14</b>	5.13 Administrative Settings .....	30
<b>4 Preparing for test.....</b>	<b>14</b>	5.14 Quick Test Setup .....	30
4.1 Site preparations.....	16	5.15 Test in Progress .....	31
4.2 Making Circuit Connections.....	17	5.16 Test Failed.....	31
4.3 PC Software Installation .....	18	5.17 Test Success .....	32
4.4 PC Software Update .....	19	5.18 OLTC Tap Change Home Screen.....	34
4.5 PowerDB Installation .....	19	5.19 New Test Plan .....	36
		5.20 Auto OLTC Test in Progress.....	40
		5.21 Test failed .....	41
		5.22 Test plan results .....	42



5.23 Magnetic Balance Test Setup.....	44
5.24 Results.....	48
5.25 Simulation Mode .....	51
5.26 PowerDB 3Ø Form .....	52
<b>6 Service.....</b>	<b>54</b>
6.1 Troubleshooting.....	54
6.2 Maintenance.....	55
6.3 Calibration.....	55
6.4 Repairs.....	55

# 1

# INTRODUCTION

## 1.1 Receipt of product

Prior to operation, check for loosened hardware or damage incurred during transit. If these conditions are found, a safety hazard is likely, DO NOT attempt to operate equipment. Please contact Megger as soon as possible.

## 1.2 Product overview

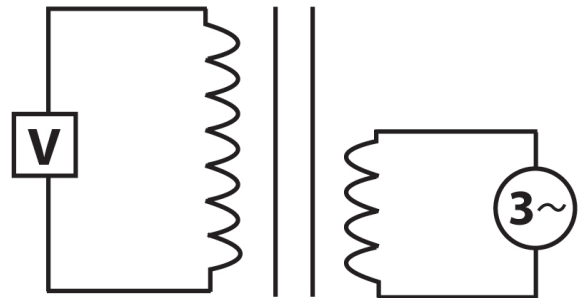
The TTRU3 ratio meter test set is a fully automatic, self-checking, menu-driven turns ratiometer. The test set measures the turns ratio, vector relationship, excitation current as well as transformer diagnostic health indicators of power, distribution, and instrument transformers. The design of this instrument is such that it operates properly, independent of line voltage quality and frequency. This allows use of any generator driven power source of 500W or higher. The test set is a lightweight portable instrument housed in a sturdy plastic case and comes complete with a canvas carrying bag to hold all accessories.

The test set can be used to test single-phase and three-phase transformers, both with and without taps in accordance with the requirements of the IEEE C57.12.90 – 2013 and IEC 60076-1 standards. For three-phase measurements, the test set is connected to all three phases of the transformer to be tested. The TTRU3 applies all three phases simultaneously which permits automatic measurement of all phases without changing connections. The TTRU3 is also designed to operate single phase on three phase transformers to help isolate transformer phase related issues. The TTRU3 measures turns ratio, phase deviation and excitation current readings which are displayed on the built in 7 inch color display or customer PC.

## 1.3 Step Up vs Step Down

Unlike other transformer ratiometers, the TTRU3 operates in both step up and step down ratio mode. Step down ratio excites the primary and measures the induced voltage on the secondary, while step up excites the secondary and measures the induced voltage on the primary.

The advantage to step up ratio testing is the ability to overcome voltage dependence exhibited by large transformers. As transformers grow in size, more voltage is required to generate flux. The TTRU3 manages this electrical phenomenon by using the transformers construction to achieve sufficient flux.



## 1.4 Model Variation & Accessories

The TTRU3 is available with different hardware and software configurations. Verify the model you received is the model that was ordered by observing the labels on the outside of the instrument and the version information displayed on the Help screen.

Use the ordering information table below to confirm that all included accessories, optional accessories, and required accessories were delivered with your TTRU3.

### ORDERING INFORMATION

Item (Qty)	Cat. No.	Item (Qty)	Cat. No.
3Ø Transformer Turns Ratio Test Set	TTRU3-EXP TTRU3-PRO TTRU3-ADV	<b>ADV/PRO Software Options</b>	
<b>Included Accessories</b>		<b>TTRU3-EXP includes all software options and will receive automatic activation of new features upon their release</b>	
AC Adapters & Power Cord - 2.5m (8ft)	2009-874	All Automation SW	SW-AUTOKIT
USB 2.0 Cable	CA-USB	PowerDB Control	SW-POWERDB
OLTC Tap Changer cable - 9m (30ft)	1011-622	Auto OLTC	SW-AUTOOLTC
Cable bag - backpack	2012-180	Custom App Control	SW-CUSTOMAPP
Ground Cable - 5m (16ft)	1011-352	All Versatile SW	SW-VERSATILEKIT
Thumb Drive	1011-585	Phase Shifting	SW-PHASESHIFT
Triple Function Pen	2011-538	Magnetic Balance	SW-MAGNETICBAL
<b>Required Lead Accessories</b>		<b>Optional Hardware Accessories</b>	
<b>Lead P/Ns 2008-XXX-XX (8 total) can be used with the TTRU3 and qualify as required accessories</b>		1:1 Test Jig	2005-249
3Ø universal shielded test lead sets compatible with MTO3XX, MWA3XX, TTRU3 instruments (up to 10A max), complete with color-coded Kelvin Clamps: Choose Kit or mix & match H & X		Safety Beacon – 18m (60ft)	1004-639
5m (15ft) H & X	2008-15KIT2	Transit Case (for instrument)	2012-236
9m (30ft) H & X	2008-30KIT2	TRS1+ Calibration Standard	TRS1PLUS
18m (60ft) H & X	2008-60KIT2	TRS1D Calibration Standard	TRS1D
30m (100ft) H & 18m (60ft) X	2008-100KIT2	Calibration Certificate	CERT-NIST
5m (15ft) H	2008-300-15	USB Printer	90029-573
5m (15ft) X	2008-301-15	USB Printer Paper (x48 rolls)	90029-573-P
9m (30ft) H	2008-300-30	OLTC Tap Changer cable adapters	1011-622-A
9m (30ft) X	2008-301-30	<b>Optional Lead Accessories</b>	
18m (60ft) H	2008-300-60	9m (30ft) H extensions	2008-300-30X
18m (60ft) X	2008-301-60	9m (30ft) X extensions	2008-301-30X
30m (100ft) H	2008-300-100	9m (30ft) H & 9m (30ft) X extensions	2008-30XKIT2

# Introduction

## 1.5 Top Panel

- 1. Speaker**  
Used for sounding countdown for test.
- 2. AUX Port**  
Used for connecting auxiliary equipment.
- 3. USB On the Go**  
TTRU3 appears as a thumb drive containing PC SW, user manual, and data sheet.  
Enables PC Control after PC SW Installed.
- 4. USB A**  
Print, export
- 5. Emergency Stop**  
Used to immediately interrupt voltage output.  
Prevents tests from starting if engaged.  
Rotate clockwise to disengage.
- 6. Fan**  
Automatically enabled when internal temperature exceeds factory limit.
- 7. Warning Indicator**  
Indicates when voltage is applied to test leads.
- 8. Manual OLTC Control Switch**  
Controls connected OLTC tap changer up/down.  
Requires OLTC cable connected to transformer.
- 9. Touchscreen**  
Primary GUI control interface. Designed for outdoor (1100 NITS) and industrial environments.
- 10. Rotary and Directional Control Knob**  
Supplemental GUI control interface.



## 1.6 Side Panel

### 11. Power Input

IEC 320 interface to mains power.

Integrated fuse holder and filter.

O = Off

I = On

### 12. OLTC Connection

Used in conjunction with Manual OLTC Control

### 13. Ground

### 14. Lead Connections

Latching connectors (press tab to release)

Color coded windings

silver/black for primary/secondary

Color coded phases

red, gold, blue, white

### 15. Beacon Connection

Optional accessory

Functions similar to Warning Indicator

### 16. Side panel reference

Quick reference for the various connections



## 1.7 Quick Start Guide

### 17. Quick Start Guide

Safety and connection reference in lid.

### 18. Feet

Rotate out to provide a better viewing angle.

**Megger TTRU3** True 3 Phase Transformer Turns Ratiometer

**SAFETY IS THE RESPONSIBILITY OF THE USER**

Only qualified and trained operators should operate the TTRU3. Operator must read and understand the Instruction Manual prior to operating the equipment.

**GENERAL SAFETY PRECAUTIONS**

The TTRU3 and the Unit Under Test (UUT) should both be considered as sources of instantaneously lethal levels of electrical energy. Observe the following safety precautions:

- Observe necessary safety precautions on the TTRU3. They identify areas of immediate hazard that could result in injury or death.
- Treat all terminals of high-voltage power equipment systems as potential electric shock hazards. Use all practical safety precautions to prevent contact with energized parts of the equipment and related circuits.
- Never connect the test equipment to energized equipment.
- The ground connection must be the first made and the last removed. Any interruption of the grounding connection can create an electrical shock hazard.
- Always disconnect leads from UUT before disconnecting them at the test set.

**POWER TRANSFORMER CONNECTIONS**

HV-RED JACKET

LV-BLACK JACKET

90-264VAC 47-63Hz 250VA MAX

OLTC 250V 2A MAX

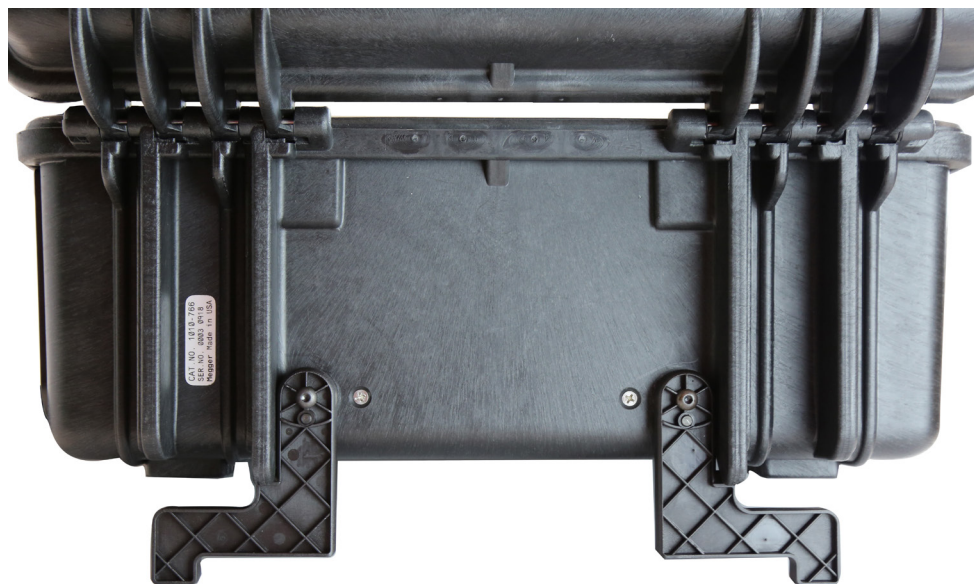
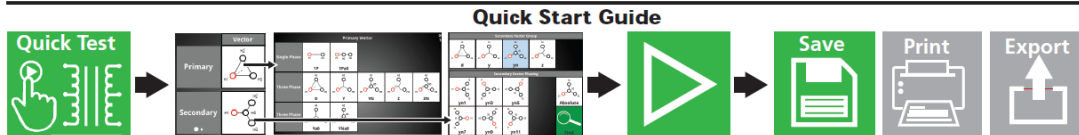
H1 1U A S1  
H2 1V B S2  
H3 1W C S3  
\* H0 1N N S0  
DO NOT CONNECT IF NO NEUTRAL  
\* X0 2N n L0  
X3 2W c L3  
X2 2V b L2  
X1 2U a L1

**CURRENT TRANSFORMER CONNECTIONS**

H1 1U A  
H2 1V B  
X2 2V b  
X1 2U a

POLARITY DOT

USE HEAVY GAUGE WIRE







# 2 SAFETY

## 2.1 Responsible User

Only qualified and trained operators should operate the TTRU3. Operator must read and understand this entire Instruction Manual prior to operating the equipment. Operator must follow the instructions of this Instruction Manual and attend the equipment while the equipment is in use. In the event of equipment malfunction, the unit should immediately be de-energized and returned to Megger for repair. The Safety precautions herein are not intended to replace your Company's Safety Procedures. Refer to IEEE 510 - 1983, IEEE Recommended Practices for Safety in High-Voltage and High-Power Testing, for additional information.

## 2.2 Symbols



Caution, possibility of electric shock



Warning, refer to User Manual



Emergency Stop

## 2.3 General Precautions



The TTRU3 and the Unit Under Test (UUT) should both be considered sources of instantaneously lethal levels of electrical energy.

### Observe the following safety precautions:

- Observe all safety warnings on the equipment. They identify areas of immediate hazard that could result in injury or death.
- Use this equipment only for the purposes described in this manual. Observe strictly the Warning and Caution information provided in this manual.
- Treat all terminals of the TTRU3 and high-voltage power equipment systems as potential electric shock hazards. Use all practical safety precautions to prevent contact with energized parts of the equipment and related circuits.
- Use suitable barriers, barricades, or warnings to keep persons not directly involved with the work away from test activities.
- Never connect the test equipment to energized equipment.
- Do not use in an explosive atmosphere.
- Use the grounding and connection procedures recommended in this manual.
  - The ground connection must be the first made and the last removed. Any interruption of the grounding connection can create an electrical shock hazard.
  - Always disconnect leads from UUT before disconnecting them from the TTRU3



- Personnel using heart pacemakers should obtain expert advice on the possible risks before operating this equipment or being close to the equipment during operation.

## 2.4 Input Power Precautions

This instrument operates from a single-phase, sine wave, power source. It has a three-wire power cord and requires a two-pole, three-terminal (live, neutral, and ground) type input source. The voltage to ground from the live pole of the power source must be within the following rated operating voltage:

**85V to 250V, 47 - 63 Hz, 250VA**

The neutral pole must be at ground potential. Before making connection to the power source, determine that the instrument rating matches the voltage of the power source. The power input plug must be inserted only into a mating receptacle with a ground contact. Do not bypass the grounding connection.

The ground terminal of the input supply cord (green or yellow/green lead) must be connected to the protective ground (earth) terminal of the line power source. The black or brown cord lead is the live (hot) lead.

The control circuits of the instrument are fuse protected. Fuse is located in the ON/OFF switch module on side panel and is replaceable by the operator. To avoid electric shock and fire hazard, use only the fuse specified below switch module on side panel.



Before replacing the fuses, disconnect the power input plug from the live power source.

# 3 SPECIFICATIONS

## Input Power

90-264VAC, 47-63Hz, 250VA Max

## Output

Voltage: 3Ø, 1 - 48VAC, up to 250V on Primary  
Frequency: 50-480Hz  
Current: 0.1mA - 1A, Max 1A @ 48V

## Turns Ratio Measurement Methods

3Ø Step Up  
3Ø Step Down  
1Ø Step Up  
1Ø Step Down

## Turns Ratio Range and Accuracy - Guaranteed from -20°C to +50°C

Step Down Excitation  
25-48V

±0.05% 0.8 - 1000  
±0.10% 1001 - 2000  
±0.30% 2001 - 15000  
±1% 15001 - 50000

1-24V

±0.10% 0.8 - 1000  
±0.20% 1001 - 2000  
±0.60% 2001 - 15000

Step Up Measurement

25-125V | ADV model  
25-250V | EXP / PRO models  
±0.05% 0.8 - 200 (most Power Tx)

1-24V

±0.10% 0.8 - 200

5 digit resolution

## Excitation Current Measurement

Resolution: 0.1mA 0.1mA - 100mA  
1mA 101-1000mA  
Accuracy: ± 1% ±0.1 mA

## Frequency Measurement

Resolution: 0.1 Hz  
Accuracy: ±0.1% ±0.1 Hz

## Transformer Phase Measurement

Range: 0 - 360 Degrees  
Accuracy: ± 0.05 Degrees

## Weight

6.5kg 14lbs

## Dimensions

406 x 304 x 254mm 16 x 12 x 8in

## Environmental

Operating -20°C to +50°C (-4°F to +122°F)  
Storage -30°C to +70°C (-22°F to +158°F)  
Relative Humidity 0-90%, non-condensing

## Regulatory

Safety

IEC 61010-1:2010 + AMD1:2016

EMI/EMC

IEC 61326-1:2012

RoHS2

EN50581



Vibration/Drop/Shock  
MIL-STD-810G

## Touchscreen

180mm (7 in.)  
800 x 480 Resolution  
1100 NITS

## Transformer Testing Standards

IEEE C57.152-2013  
IEC 60076-1:2011  
AS/NZS 6076 1:2014  
CIGRE 445 2011

## Case

Ruggedized case with fold out feet  
Canvas carrying bag for leads and accessories

## Internal/External Data Storage

Up to 2000 sets of 3 phase results internal storage  
Transferable via USB 2.0/3.0 thumb drive

## Communication/Control Software

180mm (7in) built in display running custom GUI  
USB Interface for PC Control running custom GUI

## Printer Output

51mm (2in) thermal printer  
Prints all measurement data displayed on GUI

# 4 PREPARING FOR TEST

## 4.1 Site Preparation

Choose a location that meets the following conditions:

- The location is as dry as possible.
- There is no flammable material stored in the vicinity.
- The test area is adequately ventilated.
- The test area is flat surface.
- Be sure all equipment is de-energized and all terminals of the UUT are accessible.
- Erect suitable safety barriers to protect the operator from traffic hazards and to prevent intrusion by unauthorized personnel. User provided Warning lights are recommended.
- Verify that the Local station ground is intact and has impedance continuity to earth.



Ensure UUT is completely de-energized. Check every winding. Ensure all terminals are disconnected from line or load at the UUT. Grounds may be left in place.



For all testing described herein, care shall be taken to ensure any and all unused clamps are isolated from each other, from ground, and from personnel.

### 4.2 Making Circuit Connections



Connections should be made in the order listed below.

#### 1. Ground

Use the Megger supplied Safety Ground Cable to connect the TTRU3 ground terminal directly to local station earth ground. Ensure that the transformer chassis also has a low impedance connection to local station earth ground potential.

#### 2. Input Power

Ensure the Input Power Source meets the requirements as listed in Section 2 Safety and Section 3 Specifications. Make sure ON/OFF switch is in the OFF position. Connect power cable to the TTRU3 first, then to the source. At this time, leave the ON/OFF switch in the OFF position.

#### 3. Primary & Secondary/Tertiary leads to TTRU3

With the clamps disconnected from the UUT, connect the primary and secondary/tertiary leads to the TTRU3. Be sure that all plugs are fastened securely to the TTR so they will not become loose even in the event of the operator inadvertently tripping over the leads.

#### 4. Primary & Secondary/Tertiary leads to UUT

When testing high-voltage transformers, caution must be used at all times and all safety precautions followed. Read, understand, and employ all safety precautions and circuit connections described above and in Sections 2 Safety.

Environmental conditions can lead to corrosion of the UUT terminals. Ensure that the leads are making direct contact with metal.

Use leads of appropriate length for the UUT. Ensure leads are not tightly coiled, as this may influence the ratio measurement.

#### 5. OLTC Leads to OLTC

Refer to the OLTC wiring diagram for proper lead connection.

## Preparing for test

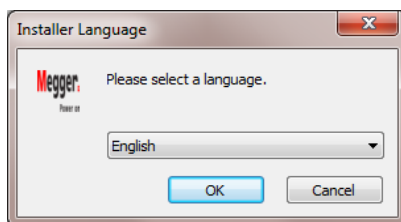
### 4.3 PC Software Installation



Before installing PC software, contact your IT department. Your IT department can assist with install and provide administrator approval if required.

The TTRU3 can be controlled from the Touchscreen or from a connected PC with the PC SW installed. To install the PC SW:

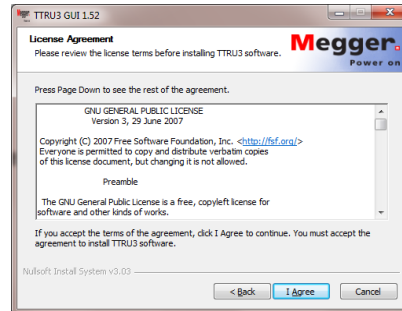
1. Insert the included thumb drive  
-OR-  
Connect the TTRU3 to your PC with the included USB Cable and turn the TTRU3 on. After initialization, a CD drive will appear on your PC which contains the software  
-OR-  
Download the latest PC SW from [www.megger.com/TTRU3](http://www.megger.com/TTRU3)
2. Locate the file named TTRU3\_installer\_X.xx.exe. X.xx is the version.
3. Double click to launch the installer.
4. Select a Language for the install and click OK.



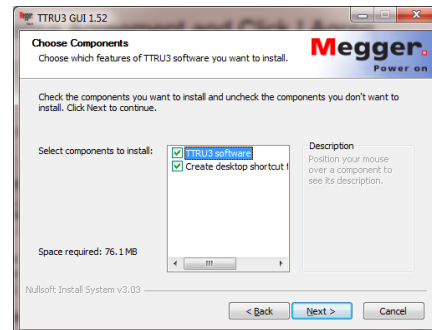
5. Click Next.



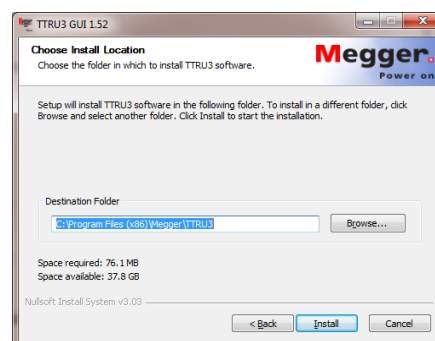
6. Review License Agreement and Click I Agree.



7. Choose components and Select Next. Defaults recommended.



8. Select Destination folder and click Install. Defaults recommended.

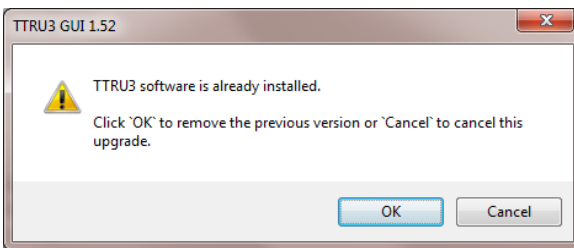


9. Click Finish to complete the installation.

## 4.4 PC Software Update

If a previous version of PC Software is installed, you will be required to uninstall before installing the new version.

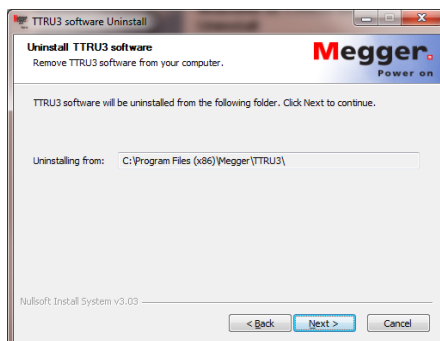
1. Locate the installer for the TTRU3 TTRU3\_installer\_X.xx.exe.  
X.xx is the version.
2. Double click to launch the installer.
3. Click **OK** to remove the previous version.



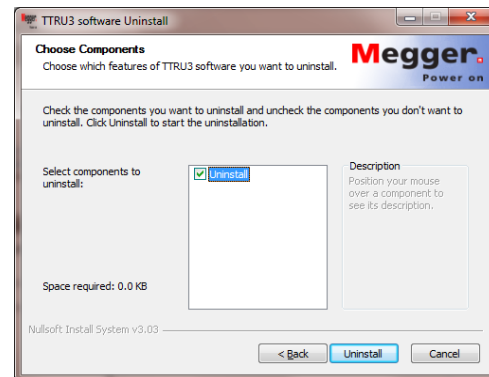
4. Click Next



5. Click Next



6. Click Uninstall.



7. Click Finish.
8. Proceed with the installation instructions in section 4.3.

## 4.5 PowerDB Installation

TTRU3 data can be imported into PowerDB. In addition, the TTRU3 can be controlled from PowerDB. To install PowerDB, download the latest version from [www.powerdb.com](http://www.powerdb.com). Follow the instructions on screen to install PowerDB.

When prompted, choose to install the optional software for the TTRU3 and proceed with the installation instructions from section 4.3.

# 5 OPERATION

## 5.1 Initialization & Interface



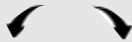
Turn on the TTRU3 using the Input AC Module. A boot screen with the Megger Logo will appear, followed by a Loading bar, then the Home Screen.

The TTRU3 graphical user interface (GUI) utilizes a resistive touchscreen. Gloves or moisture will not interfere with operation of the touchscreen.

The rotary control knob can also be used to control the TTRU3. To enable the control knob, use the directional functions. A yellow highlight will show the cursors current position.



## 5.2 Options

Options are displayed a few different ways within the TTRU3. A brief explanation can be found below:

Option Type	Description
<b>Pills</b> 	When less than seven options are available, pills are displayed. The largest pill indicates which option is selected.
<b>Multiple Selection</b> 	When seven or more options are available, a multiple selection screen is displayed. Use page left/right and first/last buttons to navigate.
<b>Rotary Knob</b> 	When displayed, indicates that values can be changed using the rotary knob.

## 5.3 Confirm/Cancel

Settings can either be saved or discarded using the buttons below:

Button	Description
	<b>Confirm</b> Accept changes
	<b>Cancel</b> Discard changes





## 5.4 Menu Bar

The Menu bar has three sections



Button	Description
<b>1 Home</b>	Available when not on the Home screen
<b>2 Navigation</b>	Information about the current screen
<b>3 Notification</b>	Date & time, notifications

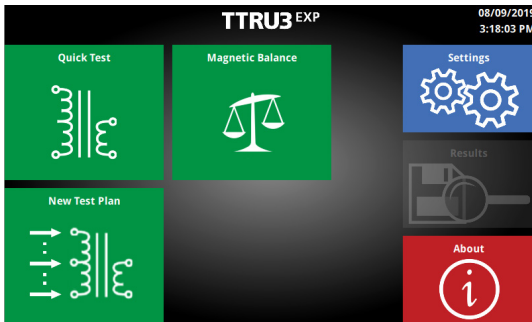
### 5.4.1 Menu Bar Buttons

Button	Description
	<b>Home</b> Return to the Home Screen
	<b>PC Connected</b> See Connected PC info
	<b>Emergency Stop Engaged</b>
	<b>Alert</b> Displays error message



## 5.5 Home Screen

The home screen appears after boot up. All major functions can be initiated from the Home screen. When in doubt, return to the home screen with the home button to get your bearings.



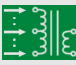





## 5.6 About Screen





The about screen is where you will find useful system information, including model, SW, and HW versions. You can also update your TTRU3 system and export logs for troubleshooting.



### 5.5.1 Home Screen Buttons

Button	Description
	<b>Quick Test</b> Set up a quick test
	<b>Magnetic Balance</b> Set up a magnetic balance test ① Optional SW Feature
	<b>Test Plan</b> Set up a Test Plan
	<b>Settings</b> Modify instrument and test settings
	<b>Results</b> View saved results
	<b>About</b> View system information Update TTRU3 Export Logs

### 5.6.1 Help Screen Buttons

Button	Description
	<b>Detailed System Info</b> Information about system
	<b>Export Logs</b> Export logs to USB drive
	<b>Update</b> Check USB drive for updates
	<b>Exit</b> Return to the Home

## 5.6.2 Update



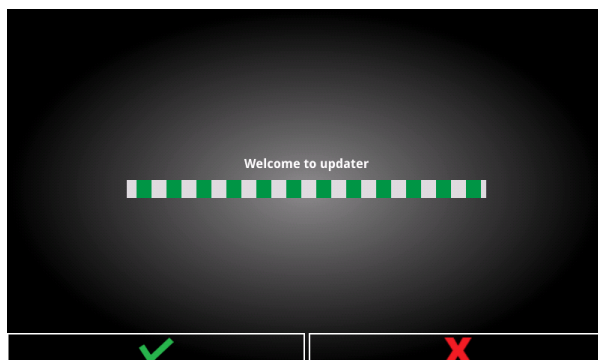
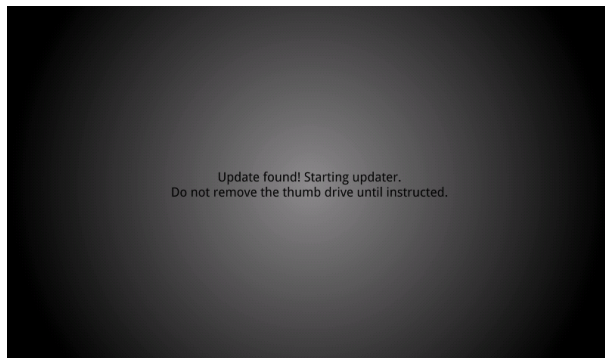
Updates can be performed at an ASC or Megger Factory. If the user chooses to install updates, they accept responsibility for all intended and unintended changes to the TTRU3.

To update the system:

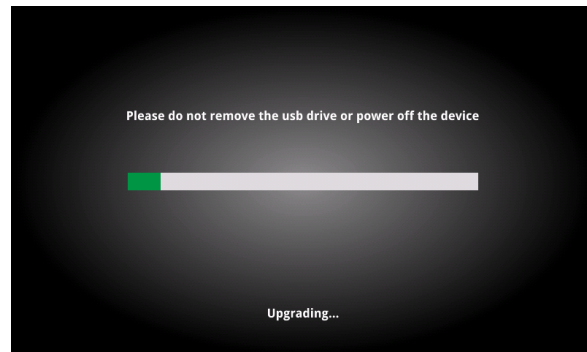
1. Check [www.megger.com/TTRU3](http://www.megger.com/TTRU3) for updates from a PC.
2. If an update is available, review the patch notes. It is recommend to update only when absolutely necessary.
3. Download the update
4. Copy the `ttru3_update_vX.x.x.tar.gz` file to the root of a thumb drive

X.x.x is the version of the update

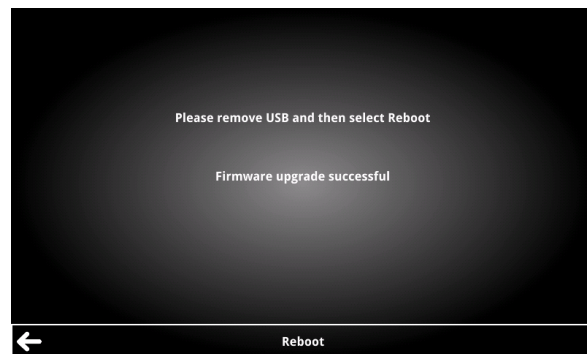
5. Remove thumb drive from PC
6. Insert thumb drive into any USB A port
7. Select Update
8. Press continue to proceed with the update



9. Wait for the update to complete



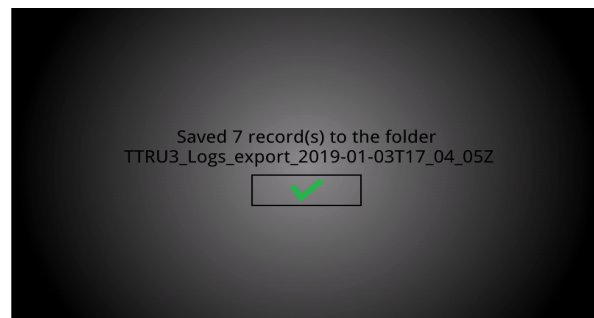
10. Remove the thumb drive and click Reboot



## 5.6.3 Export Logs

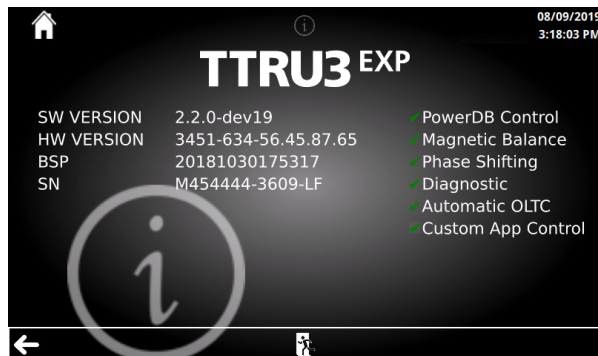
To export logs:

1. Insert thumb drive into any USB A port.
2. Select Export Logs.
3. Logs will be exported with a date/time stamp.



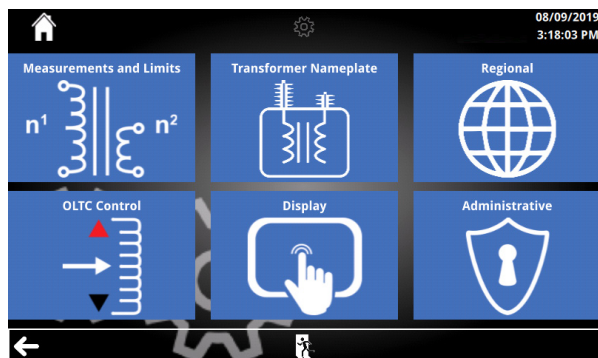
### 5.6.4 Detailed System info

Detailed system info provides additional information useful for troubleshooting.



### 5.7 Settings Screen

The settings screen displays options for configuring the TTRU3 system and default test parameters



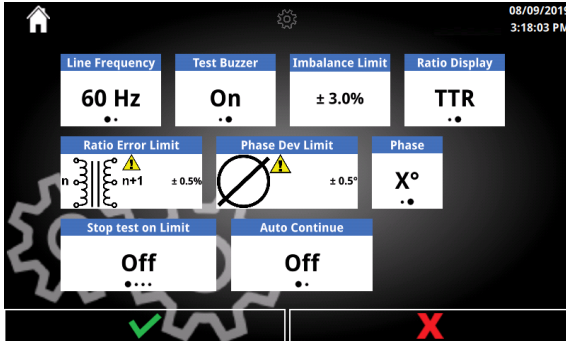
### 5.7.1 Settings Screen Buttons

Button	Description
	<b>Measurement &amp; Limits</b> Modify test settings
	<b>Transformer Nameplate</b> Set default transformer settings
	<b>Regional</b> Adjust regional settings
	<b>Display</b> Adjust display settings
	<b>Exit</b> Return to home
	<b>OLTC</b> Configure Pulse and Wait times of OLTC Optional SW Feature
	<b>Administrative</b> Password protected, infrequently changed settings
	<b>Exit</b> Return to the Home

# Operation

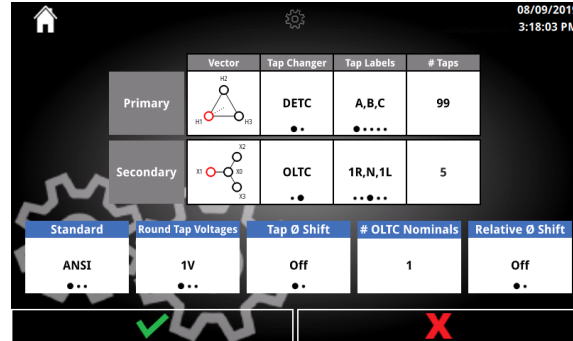
## 5.8 Measurement & Limits

The measurement & limits settings provide options for running and evaluating turns ratio tests.



## 5.9 Transformer Nameplate

The default transformer nameplate for running a test can be set here.



### 5.8.1 Measurement & Limits Options

Option	Available Settings
Line Frequency	50Hz 60Hz
Test Buzzer	On Off
Ratio Display	TNR TVR
Imbalance Limit	0.1% - 9.9% (0.1% steps) ① Optional SW Feature
Ratio Error Limit	0.1% - 9.9% (0.1% steps)
Phase Deviation Limit	0.1° - 9.9° (0.1° steps) 6" - 594" (6" steps)
Phase	° - Degrees " - Minutes
Error Limited OLTC	On Off ① Optional SW feature
Auto Continue	On Off After bootup, open last test

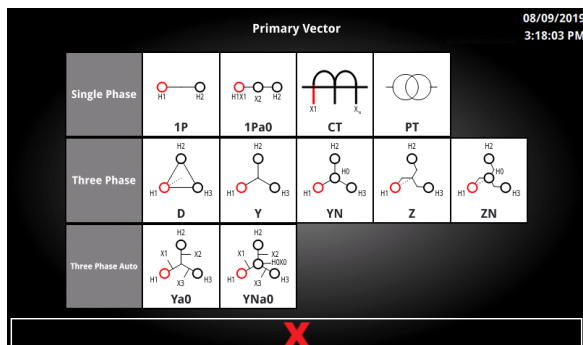
### 5.9.1 Transformer Nameplate Options and Buttons

Option	Available Settings
Primary Vector	See Primary Vector Selection Screen (5.9.2)
Secondary Vector	See Secondary Vector Selection Screen (5.9.3)
Primary Tap Changer Secondary Tap Changer	DETC OLTC <sup>1</sup>
Primary Tap Labels Secondary Tap Labels	A,B,C 1,2,3 1R,N,1L +1,0,-1
Primary # Taps Secondary # Taps	1 - 150
Standard	ANSI IEC AUS
Round Tap Voltages	1 V, 5 V, 10 V
Tap Ø Shift	On Off ① Optional SW Feature
# OLTC Nominals	1 - 9
Relative Phase Shift	On Off ① Optional SW Feature

<sup>1</sup>Only one winding can be OLTC

## 5.9.2 Primary Vector Select

The available primary vectors are displayed below. Select a primary vector to proceed to the Secondary Vector selection screen.

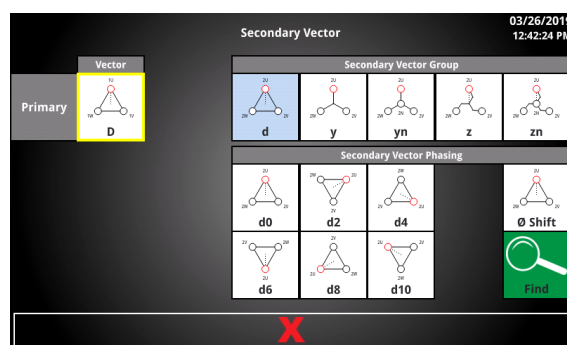


## 5.9.3 Secondary Vector Select







Secondary vector groups and phasing displayed are determined by the standard and primary vector selected.

Secondary vectors are separated by group and by phasing. Only typical vector phases are displayed as selectable options.



## 5.9.4 Secondary Vector Select Buttons

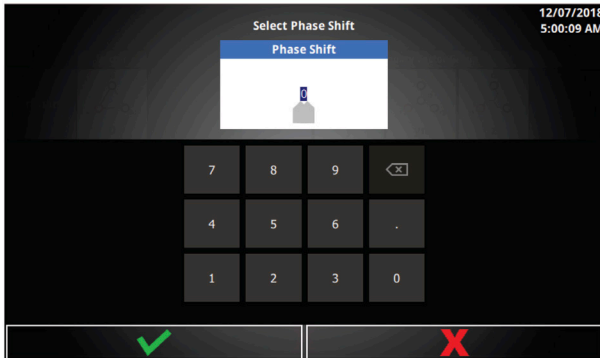
Button	Description
Primary Vector	See Primary Vector Selection Screen (5.9.2)
	Phase Shift See Phase Shift Selection (5.9.5)  Optional SW Feature
	 <b>Test Voltage Output</b>  <b>Find Vector</b> See Find Vector (5.9.6)

### 5.9.5 Phase Shift Selection



Optional SW Feature

After selecting a secondary vector group, the absolute vector selection screen can be used to enter a non-standard (30°) phase shift.



### 5.9.6 Absolute Vector Option

Option	Available Settings
Phase Shift	0° - 360° (0.1° steps)

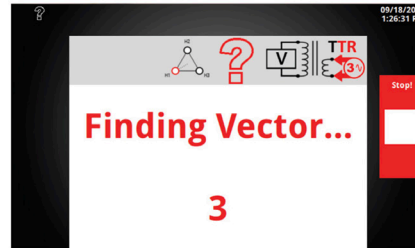
### 5.9.7 Find Vector



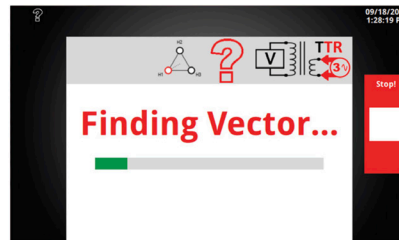
Find vector should be used as a last resort. If the vector found does not match the nameplate, operator MUST check nameplate and validate this condition. When connected to the system, improper transformer phasing may result in catastrophic failure.

After selecting a secondary vector group, the find vector function will execute a test to find the phase shift.

1. First, a brief countdown is displayed





2. After the countdown, the test begins.



3. If no connection issues are detected, the vector found screen will be displayed. Select the confirm button to accept the results of find vector. This will update the secondary vector to the found vector.

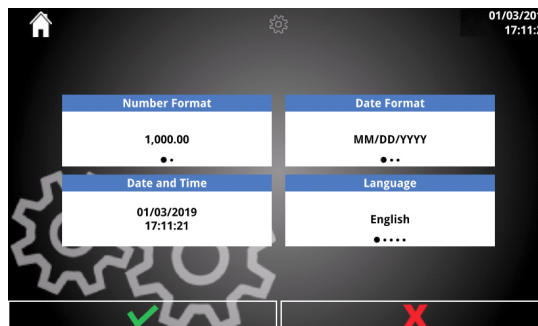


### 5.9.8 Find Vector Buttons

Button	Description
	<b>Stop!</b> Stop the test Emergency Stop recommended if safety hazards arise
	<b>Retest</b> Rerun the find vector test

### 5.10 Regional

Regional settings will configure the TTRU3 instrument for a specific locale.



#### 5.10.1 Regional Options

Option	Available Settings
Number Format	1,000.00 1.000,00
Date Format	MM/DD/YYYY DD/MM/YYYY YYYY/MM/DD
Date and Time	Date and Time screen
Language	English Deutsch Español Français Ukrainian Portuguese Korean Chinese Simplified Chinese Traditional Vietnamese Russian



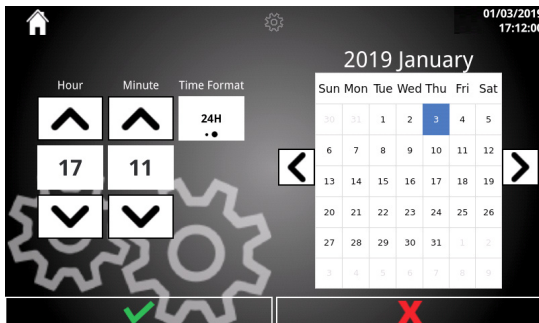
## Operation

### 5.10.2 Date and Time



Unavailable from the PC application. Use your PC to set the date and time in the PC application.

Configure the date and time of the TTRU3

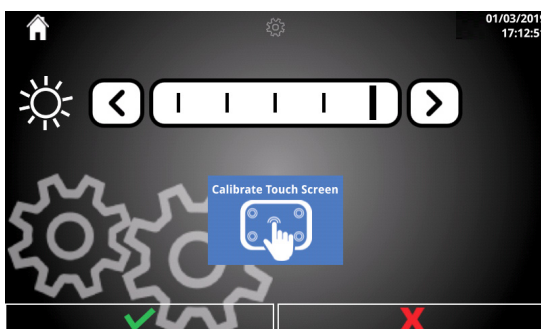


### 5.10.3 Date & Time Options

Option	Available Settings
Hour	1 - 24 <i>Based on Time Format</i>
Minute	0 - 59
AM/PM	AM PM <i>Based on Time Format</i>
Date Select	01/01/2019 - 01/01/2119
Time Format	12H 24H

## 5.11 Display

Set screen brightness and calibrate touchscreen



### 5.11.1 Display Options

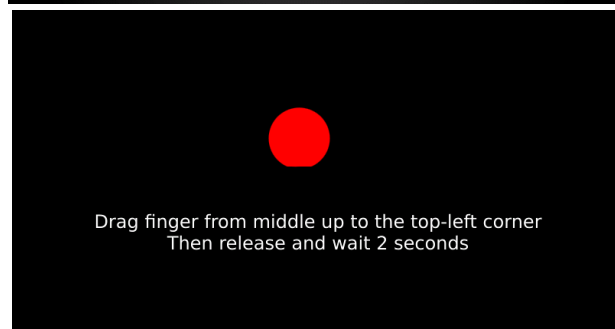
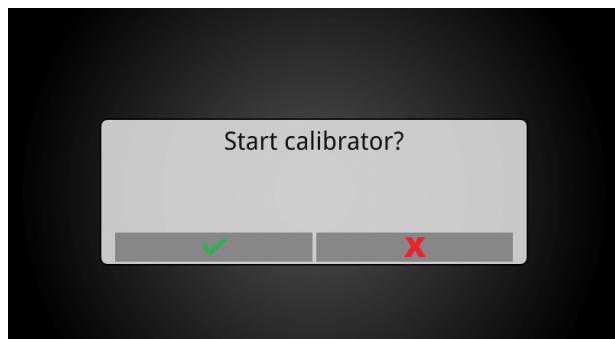
Option	Available Settings
Brightness	50% - 100%

### 5.11.2 Display Buttons

Option	Available Settings
	Calibrate Touch Screen

### 5.11.3 Calibrate Touch Screen

Follow the directions on screen to calibrate the TTRU3.



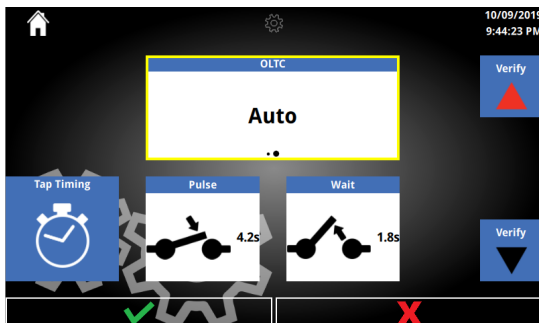


## 5.12 OLTC Settings

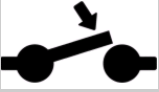



Optional SW Feature

OLTC Settings allow for configuration of the Pulse and Wait time for Automatic OLTC. Pulse time is the duration that the tap changer contact is closed. Wait time is the time the tap changer requires to complete its transition.



### 5.12.1 OLTC Options

Option	Available Settings
OLTC	Manual Auto
Pulse 	1.0 – 10.0 0.1 increments
Wait 	1.0 – 10.0 0.1 increments

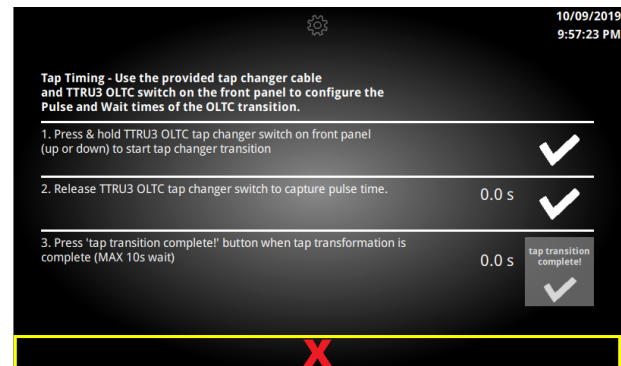
### 5.12.2 OLTC Buttons

- a. Buttons
  - i. Verify Up
  - ii. Verify Down
  - iii. Tap Timing

### 5.12.3 Tap Timing

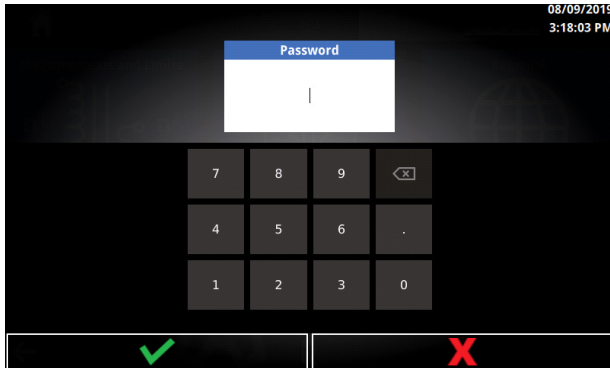
Use the provided tap changer cable and TTRU3 OLTC switch on the front panel to configure the Pulse and Wait times of the OLTC transition.

1. Press and hold TTRU3 OLTC tap changer switch on front panel (up or down) to start tap changer transition.
2. Release TTRU3 OLTC tap changer switch to capture pulse time.
3. Press 'tap transition complete!' button when tap transformation is complete (MAX 10s wait).

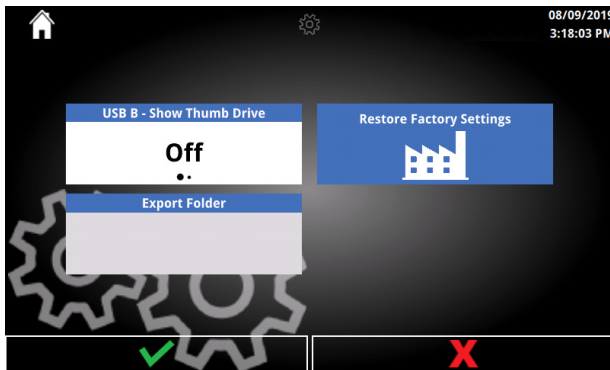


### 5.13 Administrative Settings


Infrequently changed settings set by an administrator.



After clicking Administrative, a password prompt will be displayed. The password is **2621**.

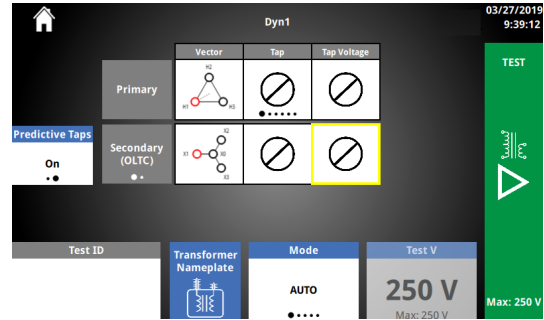


#### 5.13.1 Administrative Options

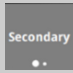
Option	Available Settings
<b>USB-B Show Thumb Drive</b>	Off On Hides PC USB CD Drive
<b>Export Folder</b>	Custom PC Export folder
<b>Restore Factory Settings</b> 	Overwrite all Settings with factory settings

### 5.14 Quick Test Setup




Quick test is a simple ratio test. Includes phase deviation and excitation current measurements. Calculated ratio and error % available if tap information is entered



#### 5.14.1 Quick Test Options

Options	Available Settings
<b>Primary Vector</b>	See Primary Vector Selection Screen (5.9.2)
	Secondary Tertiary
<b>Secondary Vector</b>	See Secondary Vector Selection Screen (5.9.3)
<b>Primary Tap Secondary Tap</b>	Options based on Default Nameplate
<b>Primary Tap Voltage Secondary Tap Voltage</b>	0 - 999,999V
<b>Test ID</b>	13 character Alphanumeric
<b>Mode</b>	Auto 3Ø Step Up 3Ø Step Down 1Ø Step Up 1Ø Step Down
<b>Test V</b>	1 – 125V Step Up (ADV model) 1 – 250V Step Up (EXP / PRO model) 1 - 48V Step Down
<b>Predictive Taps</b>	On Off

### 5.14.2 Quick Test Buttons

Options	Available Settings
	 <p><b>Test Voltage Output</b></p> <p>Starts test</p>
	<p><b>Transformer Nameplate</b></p> <p>Set transformer settings</p>

### 5.14.3 Quick Test Modes

During every test, low voltage (less than 1V) is applied as a safety and connection test. If no safety or connection failures are found, the test progress as per the test mode selection.

Auto test mode uses the results of the safety and connection test to determine:

1. If the test can be performed in step up mode, and
2. If a 3Ø test is possible. If a 3Ø test is not possible, a 1Ø test is executed if no safety or connection issues are present.

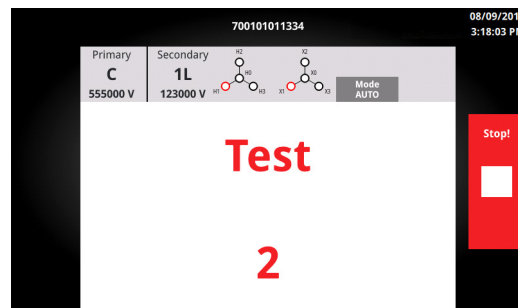
Step up applies voltage to the secondary/tertiary and induces voltage on the primary.

Step down applies voltage to the primary and induces voltage on the secondary/tertiary.

3Ø applies and measures voltage on all three phases simultaneously.

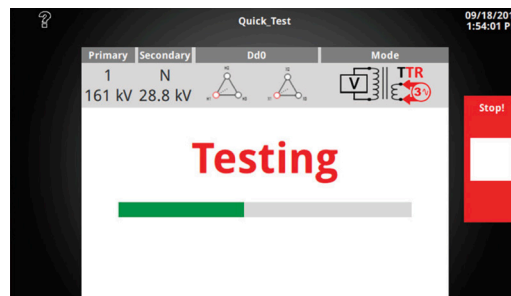
1Ø applies and measures all three phases individually.

### 5.15 Test in Progress




After clicking Test, a prompt will appear to confirm the default Test ID if none was entered. If a Test ID was entered, or if the prompt is confirmed:

1. A brief countdown is displayed if Test Buzzer is enabled
2. After the countdown, the test begins. If the optional beacon is connected, it will begin to flash



#### 5.15.1 Test in Progress Buttons

Button	
	<p><b>Stop!</b></p> <p>Stop the test</p> <p>Emergency Stop recommended if safety hazards arise</p>

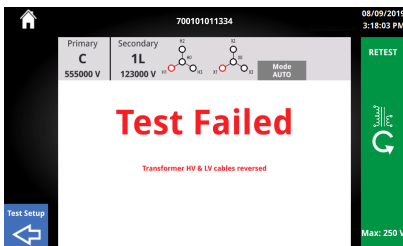
# Operation

## 5.16 Test Failed

A test can fail for a number of reasons, including but not limited to:

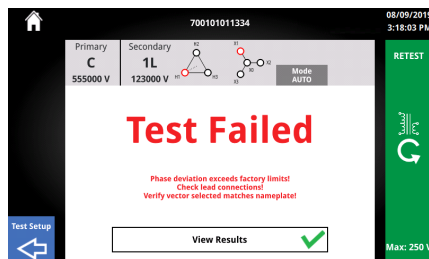
- Improper lead connections
- Improper vector selection
- Excessive current draw

If continuing a test is not possible due to safety or connection issues, the Test Failed screen will be displayed. Read the error message and the troubleshooting guide to determine the cause and resolution to the failure.



### 5.16.1 With Results

When using Auto mode, a test with failures will continue in 1Ø mode if no safety or connection issues are present. A short circuit between leads is an example of a failure that would allow a test to continue in 1Ø mode.

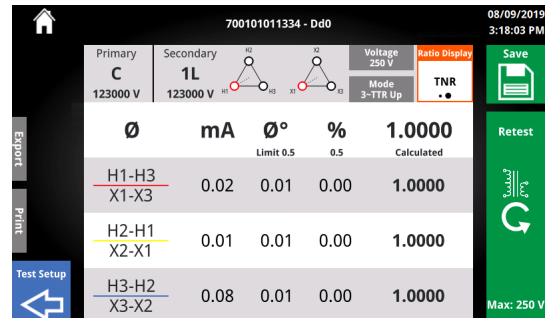


### 5.16.2 Test Failed Buttons

Button	Description
	Retest
	View Results
	Return to Test Setup

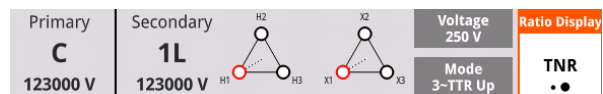
## 5.17 Test Success

When a test completes successfully, the screen below will be displayed.



### 5.17.1 Test Success Header

The header contains useful information about the test setup and how the ratio test was executed.



Information	Description
Test ID	From Test Setup Found at top of header
Vector Configuration	From Test Setup Found below Test ID Displayed as both ASCII text and vector
Primary Tap/Voltage Secondary Tap/Voltage	From Test Setup Found to the left of vector
Test Mode Test Voltage	From Test Setup Test Voltage is voltage applied phase to phase
Ratio Display	TNR/TTR Display







### 5.17.2 Ø Information

Below the header is Ø information. If a single Ø test is run, only one row of results will be available.

Ø	mA	Ø° <small>Limit 0.5</small>	% <small>0.5</small>	1.0000 <small>Calculated</small>
H1-H3 X1-X3	0.02	0.01	0.00	1.0000
H2-H1 X2-X1	0.01	0.01	0.00	1.0000
H3-H2 X3-X2	0.08	0.01	0.00	1.0000

Information	Description
1st Row Column Descriptions	<p><b>Ø Labels</b></p> <p><b>mA</b> Current draw</p> <p><b>Ø Deviation</b> ° or " based on settings <b>Limit displayed based on settings</b></p> <p><b>% Error</b> <b>Limit displayed based on settings</b></p> <p><b>Ratio</b> Nameplate/calculated ratio from tap voltages</p>
2nd, 3rd, 4th rows ØA, ØB, ØC Data	<p><b>Ø Labels</b> Based on nameplate settings and selected vector</p> <p><b>mA Current draw</b></p> <p><b>Ø Deviation</b> <b>Will display in red if exceeds limit</b></p> <p><b>% Error</b> Error calculated from nameplate ratio &amp; measured ratio <b>Will display in red if exceeds limit</b></p> <p><b>Ratio</b> <b>Will display in red if exceeds % error limit</b></p>

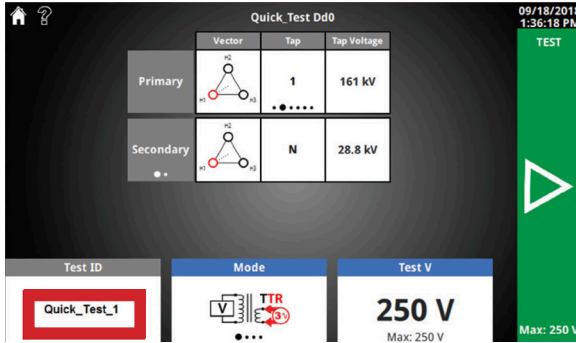
### 5.17.3 Test Success Buttons

Button	Description
	<b>Ratio Display</b> TNR/TTR Display
	<b>Save Result</b> Save and return to setup with new Test ID
	<b>Export Result</b> Exports to thumb drive, saves, and returns to setup with new Test ID
	<b>Print Result</b> <b>Available if optional printer connected.</b> Prints, saves, and returns to setup with new Test ID
	<b>Test Setup</b> Return to setup without saving result
	<b>Retest</b> Retest without saving result

# Operation

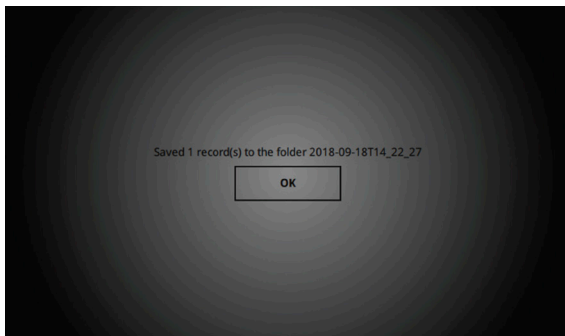
## 5.17.4 Test ID Grouping

Test IDs will be incremented after each save, export, or print (\_1, \_2, \_3, etc). This allows for quickly testing multiple taps, and when exported from the All Results screen the results will be grouped into excel and PDF reports.



## 5.17.5 Export Success

Insert a thumb drive to export results. A brief progress bar followed by the screen below will be displayed after a successful export. The folder can be found in the root of the thumb drive.



## 5.18 OLTC Tap Change Home Screen

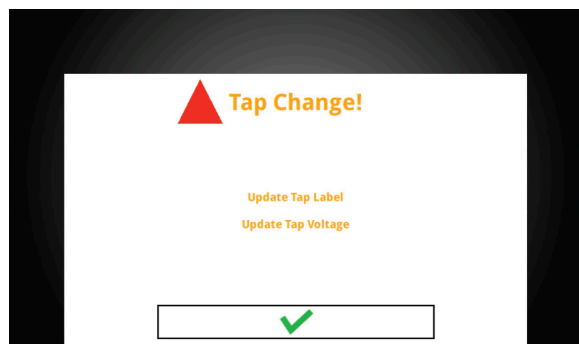
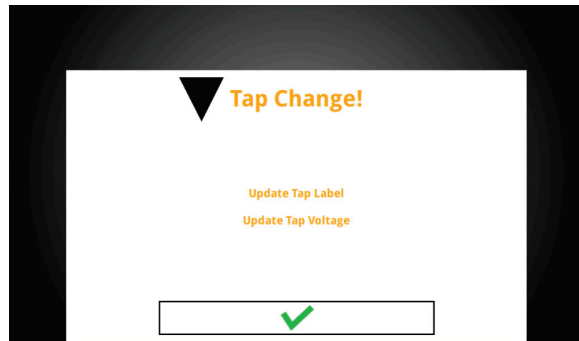
Pressing the physical tap up or tap down button while on the home screen will display a notification that the tap change is in progress. A progress bar will display while the tap change button is depressed.

After releasing the tap change button, a message will appear alerting the user to update the OLTC tap label and voltage. This message will disappear after two seconds.



OLTC operation assumes the tap changer cable has been connected to the OLTC.

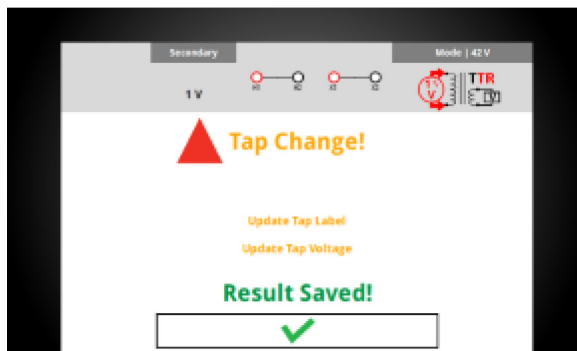
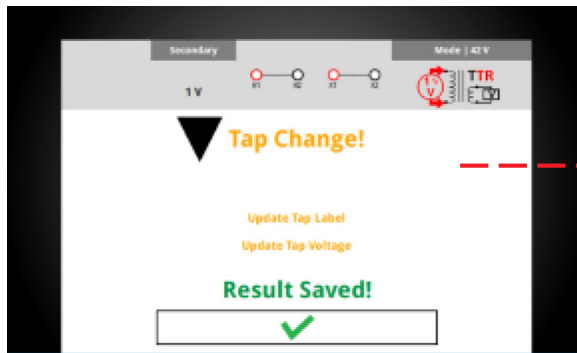
There is no feedback that the tap has been changed - it is the responsibility of the user to confirm the tap position before beginning the next test.



### 5.18.1 OLTC Tap Change Test Success

Pressing the physical tap up or tap down button while on the test success screen will display a notification that the tap change is in progress.

After releasing the tap change button, a message will appear alerting the user that the result has been saved, and to update the OLTC tap label and voltage.



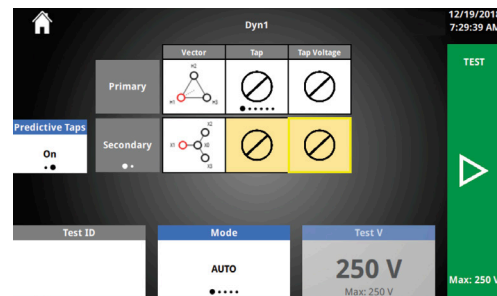
### 5.18.2 Quick Test Setup Predictive Taps

Predictive Taps allows you to quickly test a transformer with an OLTC, without having to set up a test plan. After using the manual tap up/down button:

1. The OLTC winding tap label and voltage is highlighted yellow.
2. If a tap label was selected, the next tap label will be displayed.
3. If two tap labels and tap voltages have been entered, the next tap voltage will be displayed.
4. The rotary control knob will default to the OLTC tap voltage, allowing for quick adjustment of the voltage.



Predictive Taps will not predict correct tap labels and voltage for every OLTC tap change. It is the responsibility of the user to match the tap labels/voltages to the nameplate and adjust accordingly.



### 5.18.3 Predictive Taps Options

Option	Available Settings
Predictive Taps	On Off





## Operation

### 5.19 New Test Plan

New Test Plan allows for complete transformer nameplate entry and provides results for each tap combination tested.

#### 5.19.1 Test Plan Buttons

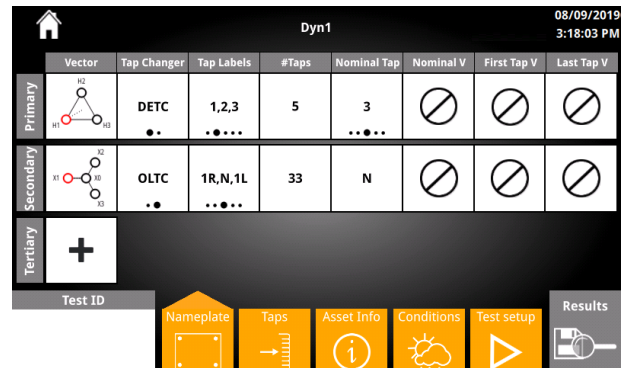
At the bottom of each Test Plan screen are navigation buttons. Use these buttons to configure the Test Plan. The screen displayed is indicated by an arrow at the top of the button.

Option	Available Settings
	Set Test Plan ID
	<b>Test Plan Nameplate</b> Configure fields required to run Turns Ratio tests
	<b>Test Plan Taps</b> Verify & update tap voltages calculated from nameplate
	<b>Test Plan Asset Info</b> Additional Nameplate fields <sup>1</sup>
	<b>Test Plan Test Conditions</b> Conditions in the field during tests <sup>1</sup>
	<b>Test Plan Test Setup</b> Select taps and begin making measurements
	<b>Test Plan Results</b> View results for the Test Plan

<sup>1</sup>Not required to run tests

### 5.19.2 Nameplate

Test Plan Nameplate is the first screen displayed when New Test Plan is clicked. Nameplate includes all fields required to configure and execute turns ratio tests. Other fields not required for tests can be found under Asset Info.



### 5.19.3 Nameplate Options


Option	Available Settings
<b>Primary/Secondary/Tertiary Vector</b>	See vector select in Settings
<b>Tap Changer</b>	DETC OLTC <sup>2</sup>
<b>Tap Labels</b>	A,B,C 1,2,3 1R,N,1L +1,0,-1 Custom
<b>#Taps</b>	1-150
<b>Nominal Tap</b>	1-150 <sup>3</sup>
<b>Nominal V</b>	1-999,999
<b>First Tap V</b>	1-999,999
<b>Last Tap V</b>	1-999,999

<sup>2</sup>Only one winding can be OLTC

<sup>3</sup>Options displayed based on Tap Labels & # Taps

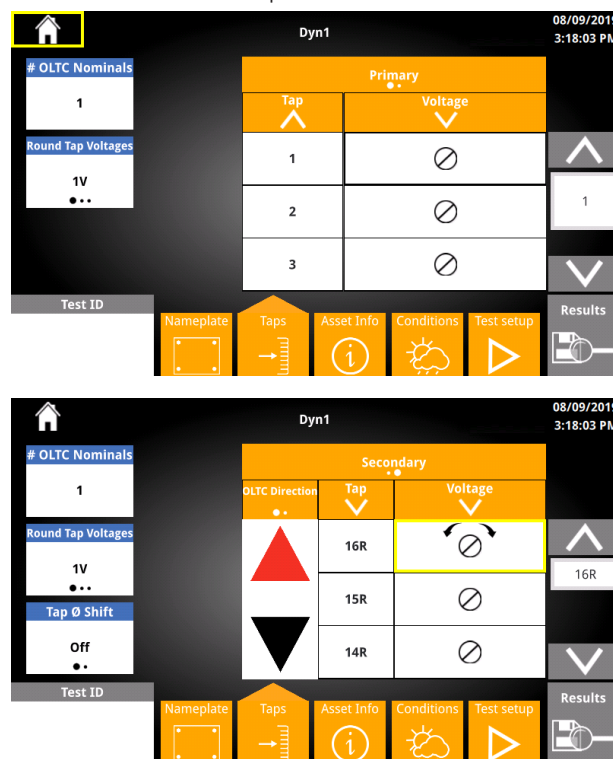


### 5.19.4 Nameplate Buttons

Button	Description
	Add Tertiary Winding

### 5.19.5 Taps

The Nameplate Taps screen is used to confirm and modify the tap labels and voltages for each winding. Initial tap labels and voltage values are based on the selections in the Nameplate screen.







### 5.19.6 Taps Buttons

Button	Description
Tap Label	Enter a custom tap label <sup>1</sup>
Tap Voltage	Enter a custom tap voltage <sup>2</sup>

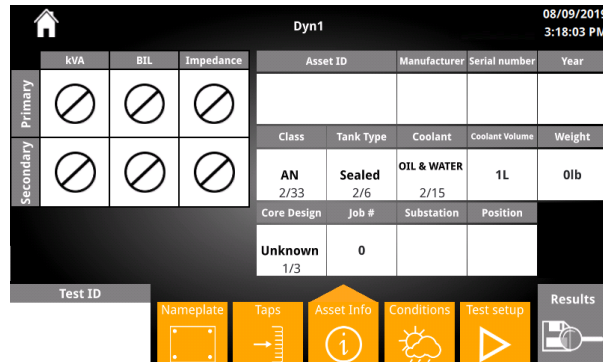
<sup>1</sup>Changing Tap Labels or # Taps will overwrite custom tap labels  
<sup>2</sup>Changing Round Tap Voltages, Nominal Tap V, First Tap V, or last Tap V will overwrite custom tap voltages

### 5.19.7 Taps Options

Option	Available Settings
Round Tap Voltages	1V 5V 10V
# OLTC Nominals	1 - 9
Tap Phase Shift	On Off <i>i</i> Optional SW Feature
	Primary Secondary Tertiary  Tertiary is an option if configured in Nameplate
	Ascending Descending  Swaps first and last tap labels
	Ascending Descending  Swaps first and last tap voltages
	Raise Lower Lower Raise  Allows user to configure tap changer direction based on tap changer cable connection

## 5.19.8 Asset Info

The Nameplate Asset Info screen is used to enter additional nameplate information not required to run turns ratio tests.



## 5.19.9 Asset Info Buttons

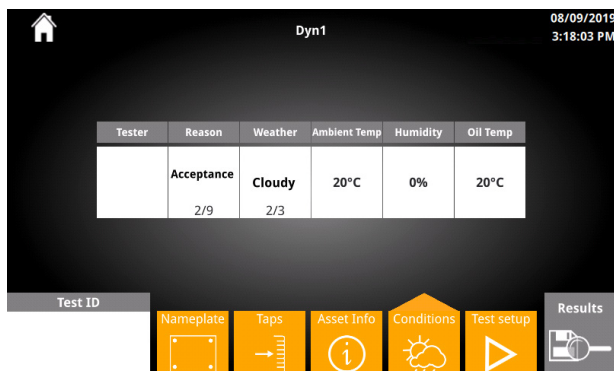
Button	Description
kVA	Enter kVA values for windings
BIL	Enter BIL values for windings
Impedance	Enter Impedance values for windings
Asset ID	Enter Asset ID
Manufacturer	Enter Asset Manufacturer
Serial Number	Enter Asset Serial Number
Year	Enter Asset Year of Manufacture
Substation	Enter Substation
Position	Enter Position
Coolant Volume	Enter Coolant Volume
Weight	Enter Weight
Job #	Enter Job #

## 5.19.10 Asset Info Options

Option	Available Settings	
Class	AF AN AN/AF FA FOA FOW KN KNAF KNAN OA OA/FA OA/FA/FA OA/FA/FOA ODAF ODWF OF	OFAF OFWF ON ONAF ONAN ONAN/ODAF ONAN/ODAF/ODAF ONAN/OFAF ONAN/OFAF/OFAF ONAN/OFAN/OFAF ONAN/ONAF ONAN/ONAF/OFAF ONAN/ONAF/ONAF ONPP OW OW/A
Tank Type	N2 Blanket Sealed Sealed-Conservator Open-Conservator Free Breath Gas-Oil-Sealed	
Coolant	Oil Oil & Water Air Open Air Encap. Silicone Gas Askarel R Temp	FR3 Biotemp Envirotemp 200 Midel 7131 Natural Esters Synthetic Esters Other
Coolant Volume Unit	GAL L UG IG kg lb tn	
Weight Unit	Kg lb tn	
Core Design	Unknown 3 leg 5 leg	

### 5.19.11 Conditions

The Conditions screen is used to enter additional information about the conditions during the test.



### 5.19.12 Conditions Buttons

Button	Description
Tester	Enter name of the individual/company performing tests
Ambient Temp	Enter Ambient Temp during tests
Humidity	Enter Humidity during tests
Oil Temp	Enter asset oil temp

### 5.19.13 Asset Info Options

Option	Available Settings
Reason	Commission Acceptance Warranty Bushing Repair LTC Maintenance Breaker Maintenance Fault Operation Retest Routine
Weather	Sunny Cloudy Humid
Ambient Temp Unit	C F

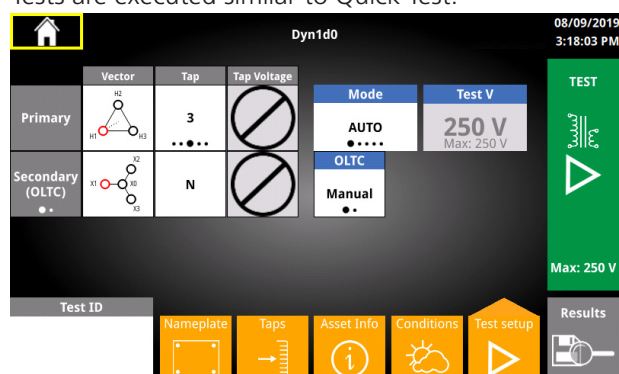
### 5.19.14 Test Setup

The Test Setup takes all previously entered Test Plan information and allows for organized and automated test execution. The Test Setup screen is similar to the Quick Test setup.

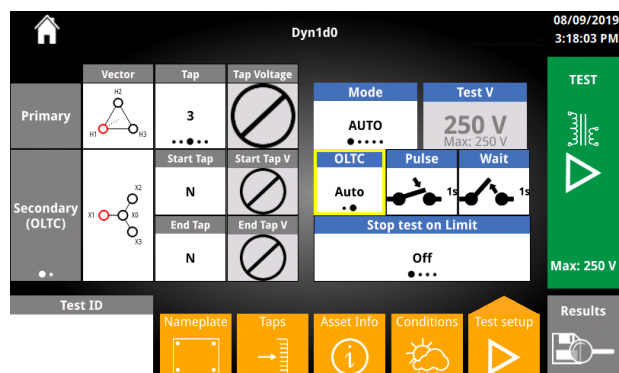
Typical test setup as follows:

- i. Select Primary tap
- ii. Select the Secondary/Tertiary tap
- iii. Click Test to start the test

Tests are executed similar to Quick Test.










If using Auto OLTC, select the desired start and end tap.



# Operation

## 5.19.15 Test Setup Buttons

Option	Available Settings
Primary/Secondary/Tertiary Vector	See vector select in Settings
	Secondary Tertiary  Only available if tertiary added on Nameplate screen
Tap	List of taps determined by Nameplate/Taps screens  Initially blank - user must select taps to test
Tap Voltage	Determined by Nameplate/Taps screens  Select to overwrite voltage
Mode	See Quick Test setup
Test V	See Quick Test setup
OLTC	Manual Auto   Optional SW Feature
Pulse	See OLTC settings   Optional SW Feature
Wait	See OLTC settings   Optional SW Feature
Error Limited OLTC	On, off   Optional SW Feature
	 Test Output Voltage Starts test <sup>1</sup>

<sup>1</sup>If no Test ID was entered, a prompt will appear asking if the default Test ID is acceptable.

If no taps were selected, a prompt will appear asking for taps to be selected.

## 5.20 Auto OLTC Test in Progress



Optional SW Feature

If the OLTC is set to Auto, the TTRU3 will

1. Execute a test on the first tap
2. Change the tap
3. Execute a test on the next tap

This process is repeated until


- The last tap is tested
- % error limit exceeded


### 5.20.1 Auto OLTC Header

When measurements are being made, the taps under test will display in the header:

Primary	Secondary
<b>3</b> 128000 V	<b>N</b> 128000 V

When the tap is being changed, the current tap, tap change direction, and next tap will be displayed from left to right in the header:

Secondary		
<b>N</b> 128000		<b>1R</b> 128800

Secondary		
<b>N</b> 128000		<b>1L</b> 127200

### 5.20.2 Auto OLTC Footer

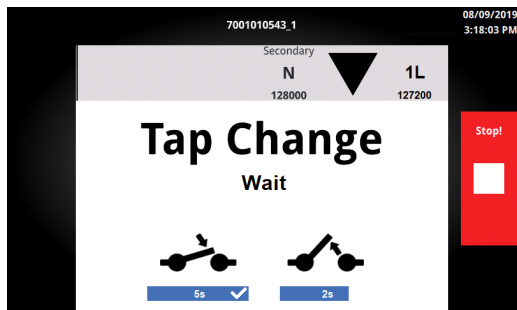
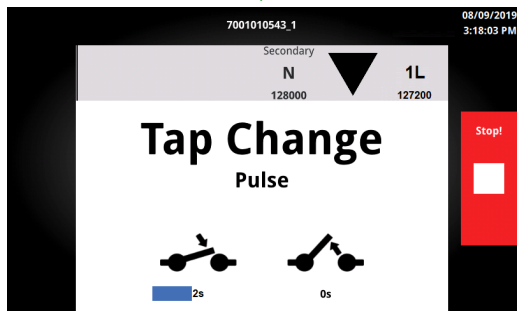
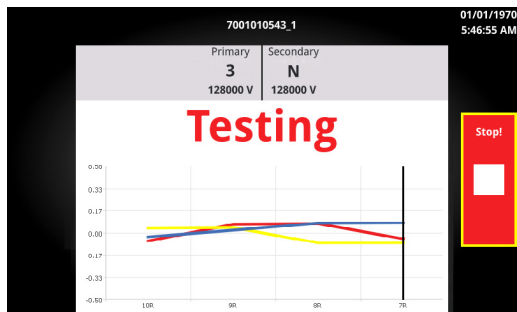
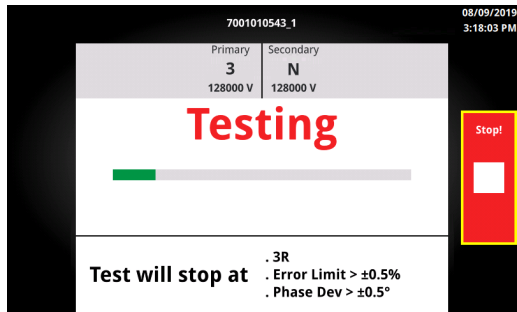
The bottom of the screen will display the test stoppage criteria

**Test will stop at**

- **3R**
- **Error Limit > ±0.5%**
- **Phase Dev > ±0.5°**

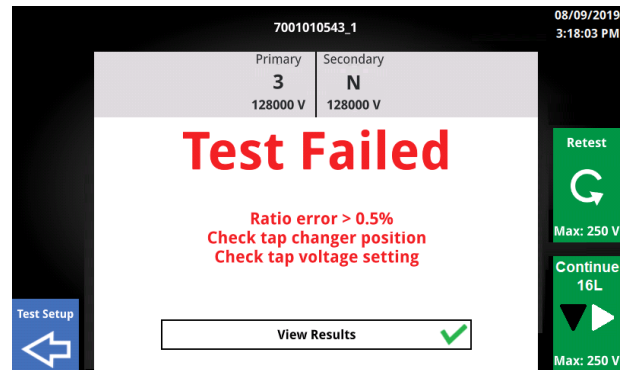
### 5.20.3 Auto OLTC Test Flow

The Auto OLTC Test Flow is shown below, and is valid while there are still additional taps to test



### 5.21 Test Failed

A Test Failed screen will be displayed if the test cannot be executed successfully or the results exceeded testing limits



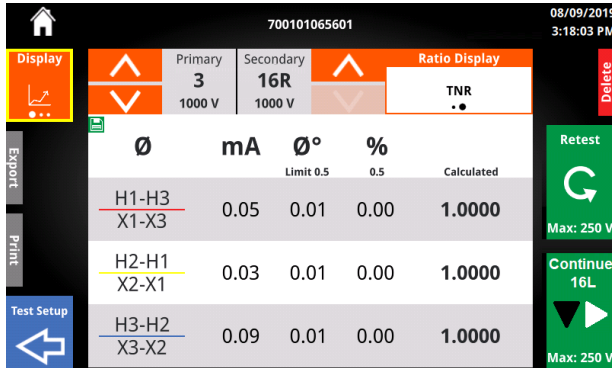
#### 5.21.1 Test Failed Buttons

Button	Description
	View Failed Results
	Retest Tap
	Continue - Change Tap & Test Optional SW Feature
	Return to Test Setup

Print the Graph

## 5.22 Test Plan Tap Results

From a failed test, the tap results will be displayed after clicking View Results.



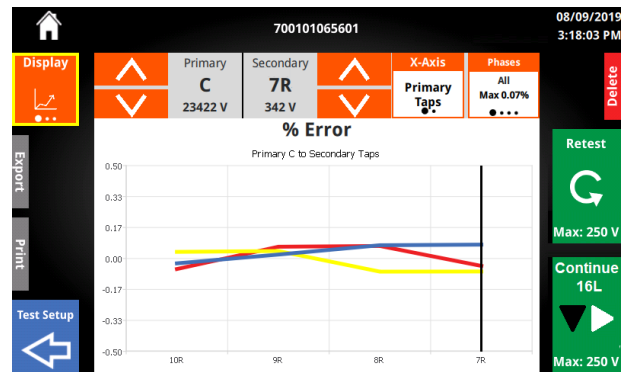
### 5.22.1 Tap Results Buttons

Export, Print, Test Setup, and Delete appear minimized. Click the area around the button to expand the button. Click again to execute action

Button	Description
	View Failed Results
	Retest Tap
	Delete the individual result
	Retest Tap
	Continue - Change Tap & Test <i>i</i> Optional SW Feature
	Return to Test Setup
	Export the Test Plan Result

## 5.22.2 Results Graph

When a test completes successfully, a graph of the % Error will be displayed. A scan line appears over the current tap position. Min/Max % error of the y-axis is based on Measurement & Limits setting. If one of the taps exceeds the allowed percent error, the Min/Max % error will change and a red band will be displayed on the graph. The Max phase percent error appears in the phase options, and individual phase error will be displayed when the phase option is changed.



### 5.22.3 Results Graph Options

Option	Available Settings
	Change Test Plan Display
	Change winding tap up or down
<b>X-Axis</b>	Primary Secondary/Tertiary
<b>Phases</b>	All ØC ØB ØC

## 5.22.4 Results Summary

The last view available for Test Plan is the Test Summary. Test summary provides the vector tested, date & time, test voltage, test mode, number of taps failed, and total number of results.

Pri Tap	Pri V	Sec Tap	Sec V	Max % Error
C	23,422	10R	342	-0.06
C	23,422	9R	342	0.06
C	23,422	8R	342	0.07
C	23,422	7R	342	0.07

## 5.22.5 Summary Buttons

Button	Available Settings
	Change Test Plan Display
	Change winding tap up or down
	Show only failed results Appears only if results failed
	Show all results
<b>Tap Result</b>	Switch to tap result view for that tap result
	Copy Setup Generates new Test ID with no results
	Delete the Test Plan Requires x2 confirmation

## 5.22.6 Test Plan Info



Using the Physical Tap Changer Button will not update the tap displayed! It will only change the tap.



Continue will first change the **from the tap displayed, then execute a turns ratio test.**



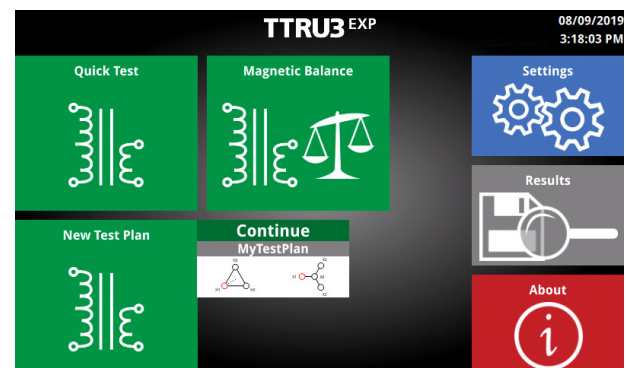
During Auto OLTC, overwrite results will appear for EACH tap that has results. Use the copy setup button in Test Summary to create a duplicate result to avoid these messages.



Results for different vectors and test modes cannot be combined. If vector or test mode is changed after tests have been executed, a prompt will appear asking for a new file name.

## 5.22.7 Continue

For convenience, the most recent test plan will be displayed on the home screen next to Test Plan





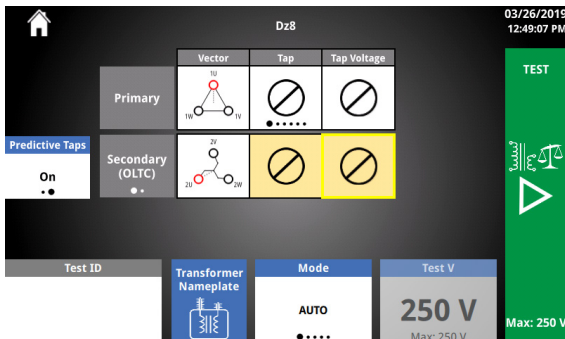
## 5.23 Magnetic Balance Test Setup



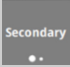
Optional SW Feature

The test setup for Magnetic Balance is identical to Quick Test setup. When running a Magnetic Balance test, you also get the turns ratio results.




Magnetic balance is an advanced diagnostic test typically performed during transformer construction and commissioning used to detect problems such as inter-turn and inter-strand shorts, external loops around the core, and wrong interleaving joints. It is also useful in determining if a transformer core is magnetized and checking that the mechanical properties of the core and windings have not changed after a fault.



### 5.23.1 Magnetic Balance Test Options

Options	Available Settings
Primary Vector	See Primary Vector Selection Screen (5.9.2)
	Secondary Tertiary
Secondary Vector	See Secondary Vector Selection Screen (5.9.2)
Primary Tap Secondary Tap	Options based on Default Nameplate
Primary Tap Voltage Secondary Tap Voltage	0-999,999 V
Test ID	13 character Alphanumeric
Mode	Auto 3Ø Step Up 3Ø Step Down 1Ø Step Up 1Ø Step Down
Test V	1-125 V Step Up (ADV model)  1-250 V Step Up (EX / PRO Model)  1 - 48 V Step Down

### 5.23.2 Magnetic Balance Test Buttons

Options	Available Settings
	 <b>Test Voltage Output</b> Starts test
	<b>Transformer Nameplate</b> Set transformer settings



### 5.23.3 Magnetic Balance Test Modes



Magnetic Balance provides turns ratio results and Magnetic Balance results.

Magnetic Balance is always performed with 1Ø excitation

During every test, low voltage (less than 1V) is applied as a safety and connection test. If no safety or connection failures are found, the test progress as per the test mode selection.

Auto test mode uses the results of the safety and connection test to determine

1. If the turns ratio test can be performed in step up mode, and
2. If a 3Ø turns ratio test is possible. If a 3Ø test is not possible, a 1Ø test is executed if no safety or connection issues are present

In auto test mode, magnetic balance chooses the winding to excite and measure in the following priority order:

- Wye winding on secondary (Step Up)
- Wye winding on primary if secondary/tertiary is not a Wye (Step Down)
- Secondary winding if neither winding is a Wye (Step Up)

If auto mode is not selected, then the magnetic balance test will excite the winding selected in the test mode.

Step up applies voltage to the secondary/tertiary and induces voltage on the primary.

Step down applies voltage to the primary and induces voltage on the secondary/tertiary.

3Ø applies and measures voltage on all three phases simultaneously

1Ø applies and measures all three phases individually

### 5.23.4 Magnetic Balance Test Success

When a test completes successfully, the screen below will be displayed.

Excited Ø	Measured Ø			Total Induced Limit 100±3.0%
	X1-X3	X2-X1	X3-X2	
X1-X3	100% 47.3 V	48.3% 22.8 V	51.7% 24.4 V	100 % 47.3 V
X2-X1	51.7% 24.4 V	100% 47.3 V	48.3% 22.8 V	100 % 47.3 V
X3-X2	48.3% 22.8 V	51.7% 24.4 V	100% 47.3 V	100 % 47.3 V

## Operation










### 5.23.5 Magnetic Balance Ø Information

Below the header is the Ø Information.

Excited Ø	Measured Ø			Total Inducted
	X1-XØ	X2-XØ	X3-XØ	
X1-XØ	100% 47.2 V	78.8% 37.2 V	20.7% 9.80 V	99.5 % 47.0 V
X2-XØ	49.6% 23.4 V	100% 47.2 V	50.0% 23.6 V	99.6 % 47.1 V
X3-XØ	20.0% 9.43 V	79.6% 37.6 V	100% 47.2 V	99.5 % 47.0 V

Information	Description
Primary Vector	See Primary Vector Selection Screen (5.9.2)
1st Row Column Descriptions	<p><b>Excited Ø</b> Which phase was excited</p> <p><b>Measured Ø</b> Which phase was measured. Voltage measured and percent of excited Ø voltage</p> <p><b>Total Induced</b> Total voltage induced in the two Ø's that were not excited. Voltage measured and percent of excited Ø voltage</p> <p><b>Limit displayed based on settings</b></p>
2nd, 3rd, 4th rows ØA, ØB, ØC Data	<p><b>Excited Ø</b></p> <p><b>Measured Ø</b> Will appear grayed out if the measured phase was the excited phase</p> <p><b>Total Induced</b> Total voltage induced in the two Ø's that were not excited. Voltage measured and percent of excited Ø voltage</p> <p><b>Will appear in red if exceeds % imbalance limit</b></p>

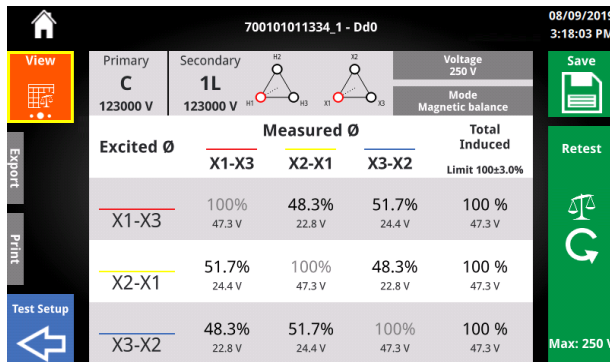
### 5.23.6 Magnetic Balance Test Success Buttons

Button	Description
	<b>Save Result</b> Save and return to setup with new Test ID
  	<b>View</b> Change View
	<b>Export Result</b> Exports to thumb drive, saves, and returns to setup with new Test ID
	<b>Print Result</b> <b>Available if optional printer connected.</b> Prints, saves, and returns to setup with new Test ID
	<b>Test Setup</b> Return to setup without saving result
	<b>Retest</b> Retest without saving result
	<b>Ratio Display</b> TNR/TTR display

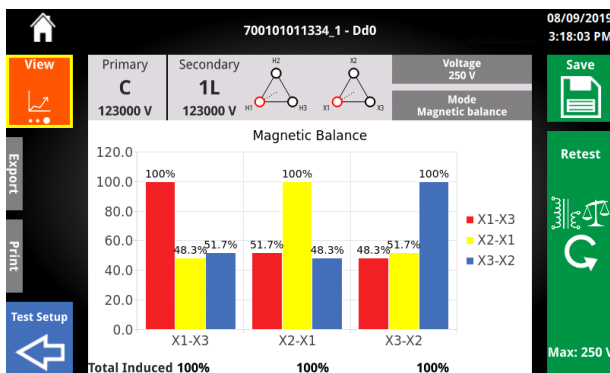
## 5.23.7 Magnetic Balance Test Success Views

Selecting the View button will change how and what data is displayed. There are three possible views for the magnetic balance test.

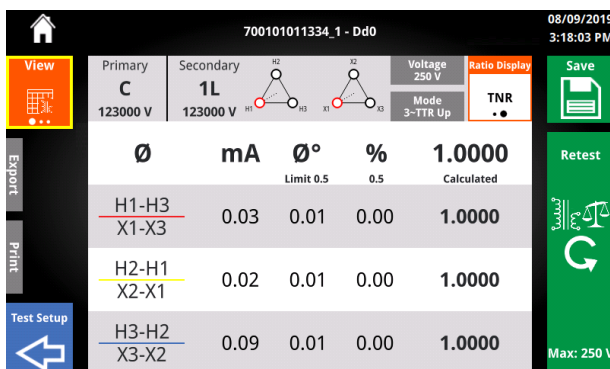
### Magnetic Balance Table View



### Magnetic Balance Graph View



### Turns Ratio View



## 5.23.8 Possible Reasons for Imbalance and Suggested Tests when Imbalanced

Possible reasons for imbalance is informative only.

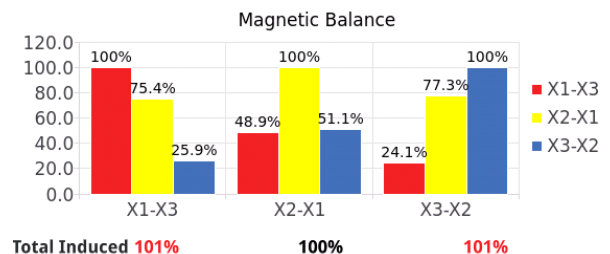


To investigate further, **Suggested Tests** can be run.

**Always refer to your companies policies when determining if additional testing is required.**

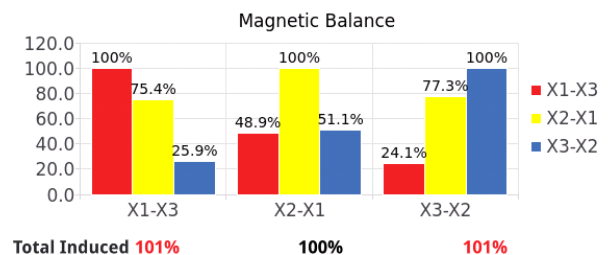
If the total induced % exceeds the imbalance limit for one or more phases excited, the magnetic balance graph view will display additional information below the graph.

Select the pills to change the view from possible reasons for imbalance to suggested tests.



**Possible reasons for imbalance**

- Incorrect lead connection
- Insufficient flux
- Magnetized Transformer
- Delta used for test
- Problem with transformer core
- Problems with transformer winding



**Suggested tests when imbalanced**

- Demag
- Short-Circuit Impedance
- 10kV Excitation
- FRSL

# Operation

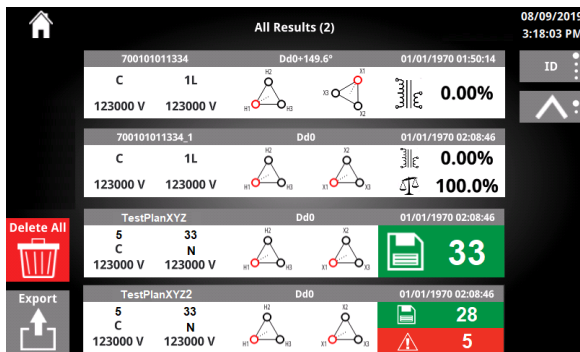
## 5.24 Results

After running a test and saving a result, the results button will be enabled on the Home Screen.

Clicking on the results button will bring you to the all results screen.

Max Ø % error and/or imbalance is displayed for each result, depending on the test setup.

Test Plans will show the number of saved results that did not fail measurement limits next to the save icon. The number of saved results that failed measurement limits will show next to the warning icon.



## 5.24.1 Results Buttons

Button	Description
	<b>Delete All</b> Delete all results
	<b>Export</b> Exports all results
	Individual Result Click to review the result details

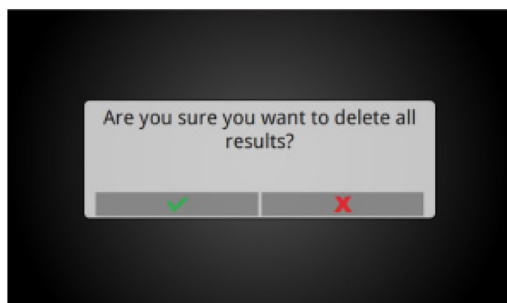
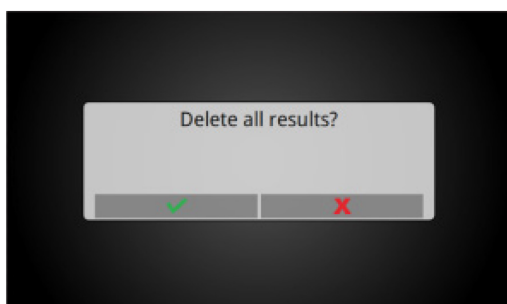
## 5.24.2 Results Options

Button	Description
<b>Sort Type</b>	ID Date Vector # or Results
<b>Sort Order</b>	Ascending Descending
<b>Scroll Bar</b>	Scroll through available results

### 5.24.3 Delete All Results

Deleting all results requires double confirmation that the action is intended.

After deleting all results, the TTRU3 will return to the Home screen.

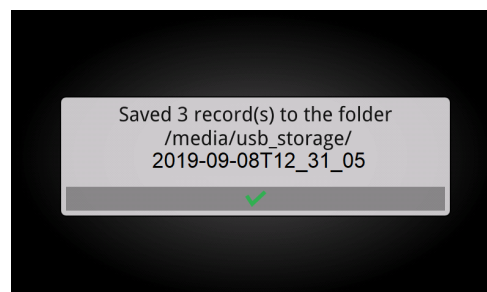


### 5.24.4 Export All Results




Periodically export all results and store locally, preferably on a network with scheduled backups. **THE TTRU3 IS NOT INTENDED TO BE A PERMANENT REPOSITORY FOR YOUR TEST DATA.**




Insert a thumb drive to export results. A brief progress bar followed by the screen below will be displayed after a successful export.



Results are exported to the root of a thumb drive in a folder with a date/time stamp.

 1970-01-01T02\_31\_05

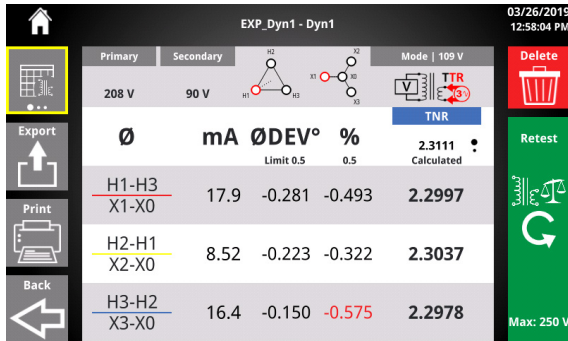
Within the date/time stamp folder, there is a CSV file with all the results for importing into PowerDB, a folder with grouped results based on file names (see section on Test ID Grouping), and a folder with individual results.

-  Group Results
-  Individual Results
-  Test Plan Results

## Operation

### 5.24.5 Review Result

The review result screen is nearly identical to the test success screen.

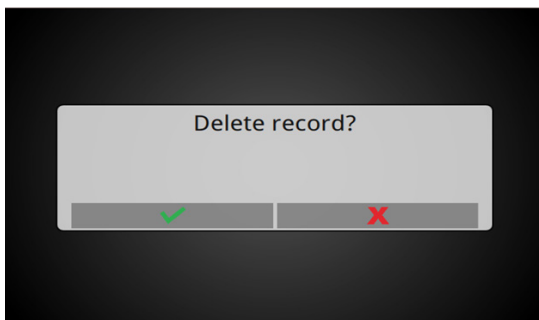


### 5.24.6 Review Result Buttons

Button	Description
	<b>Ratio Display</b> TNR/TTR display
	<b>Delete Result</b> Delete the result. Requires confirmation
	<b>View</b> Change View
	<b>Export Result</b> Export result to thumb drive.
	<b>Print Result</b> <b>Available if optional printer connected.</b> Prints result
	<b>Back</b> Return to All Results
	<b>Retest</b> Retest with prompt to overwrite.
	<b>Copy Test</b> Copy Test Plan Setup with a new name and no results

### 5.24.7 Delete Result

Deleting the result requires confirmation that the action is intended.



### 5.24.8 Overwrite Result Buttons

Button	Description
✓	<b>Confirm</b> Overwrite saved results with new results
✗	<b>Cancel</b> Discard new results and keep saved results

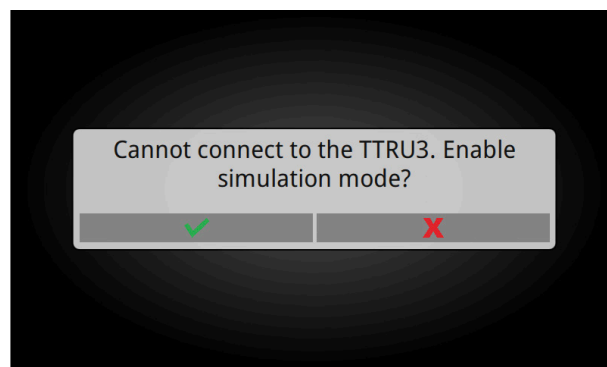
### 5.18.8 Overwrite Result

After retesting from a saved result, the TTRU3 will ask if the result should be overwritten.



### 5.25 Simulation Mode

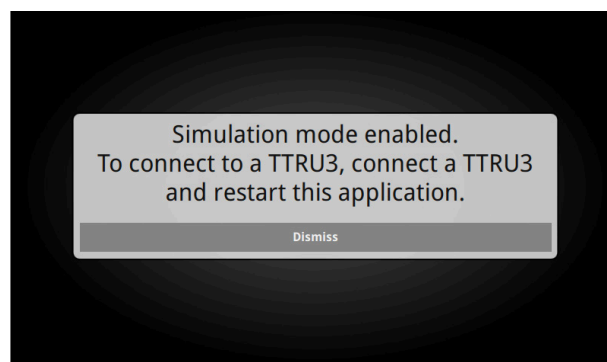
After launching the TTRU3 PC SW, if no TTRU3 is detected, simulation mode will be available



All software features are unlocked in simulation mode. Simulation mode is noted by an icon in the menu bar

Clicking on the icon displays the following message:

“Simulation mode enabled. To connect to a TTRU3, connect a TTRU3 and restart this application.”



# Operation

## 5.26 PowerDB 3Ø Form

PowerDB provides a 3Ø form for importing results and controlling the TTRU3 (as well as data from other Megger instruments).

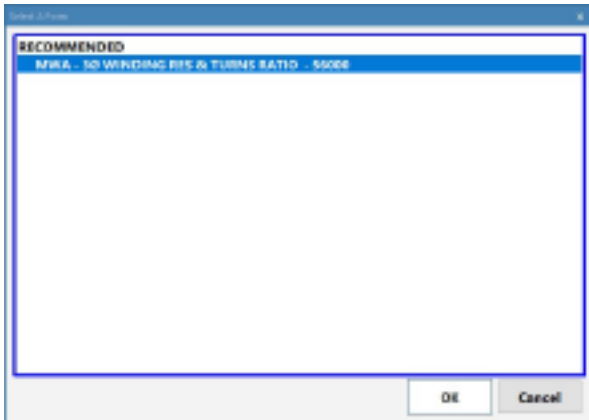
To begin using PowerDB, launch PowerDB Lite.



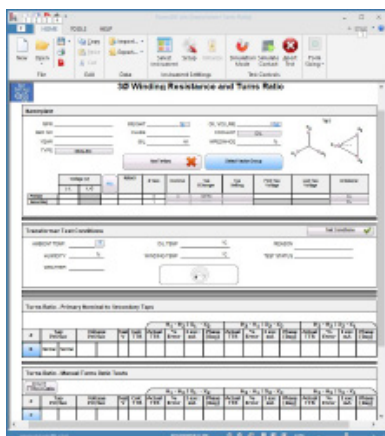
Next, select the TTRU3 from the Instrument Selection screen.



Select the Recommended 3Ø Form and select OK

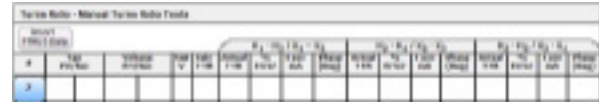


The form below will be displayed

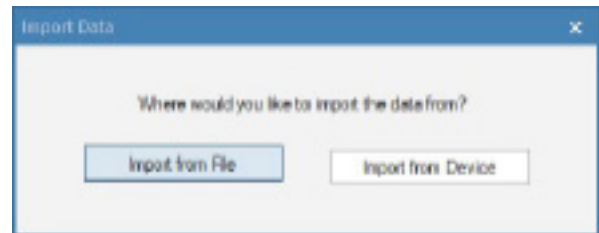


## 5.26.1 PowerDB Import from File

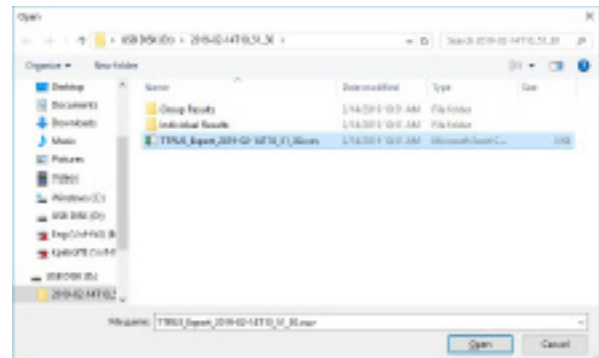
To import data exported to a thumb drive, find the table where there data should be imported and select "Import TTRU3 Data"



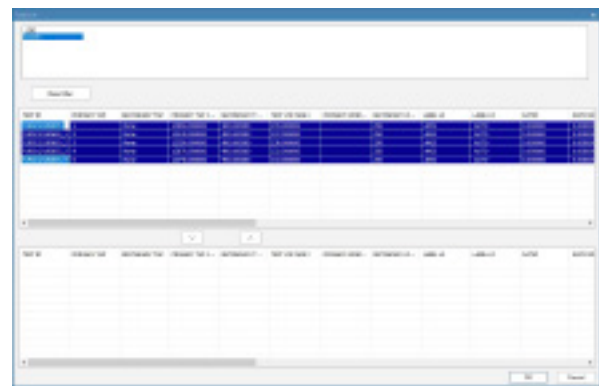
Next, select Import from file



Find the csv file that was exported and select Open

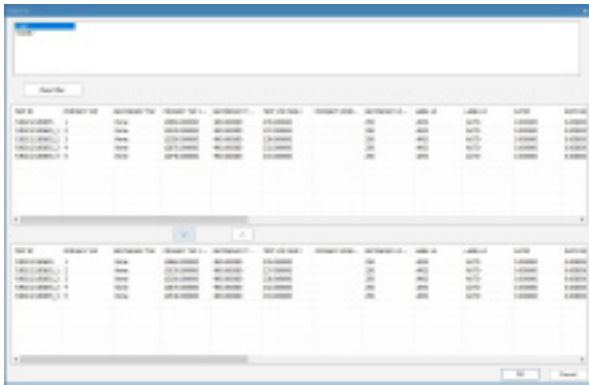


Select results from the top table using shift + left mouse click.

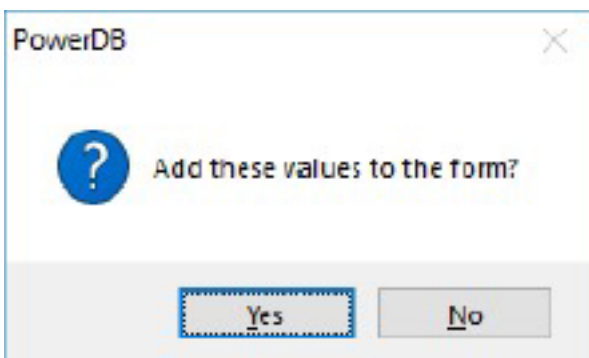


Select the Down arrow to transfer the data to the bottom table. Select results one at a time if you want to change the order of the data





Click Ok, then click Yes to add the data to the form.

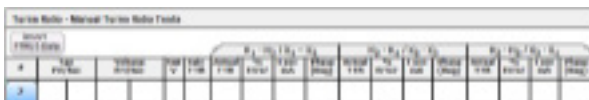


The data will now appear in the table in PowerDB

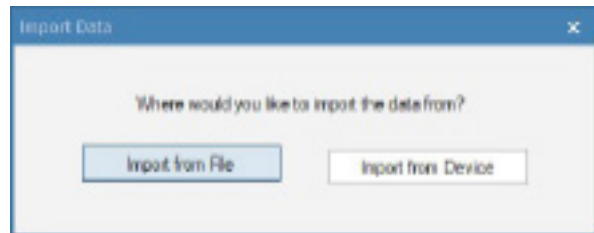
#	Test Name	Output Power	Efficiency (%)	THD (%)	THN (%)	THD (%)	THN (%)	THD (%)	THN (%)	THD (%)	THN (%)	THD (%)	THN (%)	THD (%)	THN (%)
1	Test 1	1000	90	10	10	10	10	10	10	10	10	10	10	10	10
2	Test 2	2000	85	15	15	15	15	15	15	15	15	15	15	15	15
3	Test 3	3000	80	20	20	20	20	20	20	20	20	20	20	20	20
4	Test 4	4000	75	25	25	25	25	25	25	25	25	25	25	25	25
5	Test 5	5000	70	30	30	30	30	30	30	30	30	30	30	30	30

## 5.26.2 PowerDB Import from Device

To import data directly from the TTRU3, first connect the TTRU3 to a PC with the supplied USB B cable. Find the table where the data should be imported and select "Import TTRU3 Data"



Select Import from Device



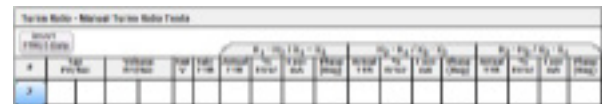
Follow the steps as outlined in 5.18.1 to complete the import.

## 5.26.3 PowerDB Control

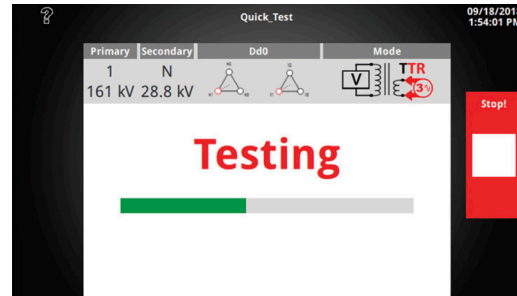


PowerDB Control is an optional SW feature

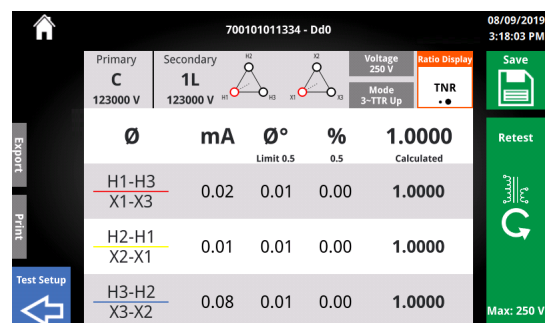
To run a test, click on the blue in the table where the result should be displayed.



The Test In Progress screen will be displayed.



After the test completes, click Save, Test Setup, or close out of the GUI to import the result to the form.



#	Test Name	Output Power	Efficiency (%)	THD (%)	THN (%)	THD (%)	THN (%)	THD (%)	THN (%)	THD (%)	THN (%)	THD (%)	THN (%)	THD (%)	THN (%)
1	Test 1	1000	90	10	10	10	10	10	10	10	10	10	10	10	10

# 6 SERVICE

## 6.1 Troubleshooting

The Troubleshooting Guide is arranged to help you evaluate the reasons for TTRU3 malfunction. The possible test set malfunctions and causes are listed below. Electronic circuit repairs should not be attempted in the field. Refer to Repair section.

### TTRU3 does not turn on

- Check that the power cord is fully inserted into the TTRU3.
- Check that the power source is outputting voltage at acceptable levels and frequency.
- Check that the power cord is fully inserted into the source.
- Check that the power switch is in the correct position ( I ).
- Set the power switch to off ( O )  
Wait 30 seconds  
Set the power switch to on ( I )
- Try another power cord

### Self Check

- Connect the leads as described below  
H1 to X1  
H2 to X2  
H3 to X3  
H0 to X0
- Select Dd0, Yy0, or YNyn0 and perform a test
- Verify ratio between 1.0005 and 0.9995

### TTRU3 Reports test failed, but still provides data

- Check lead connections. Reference Nameplate to ensure leads are connected to the correct bushing.

### Printer not working

- Check battery is inserted into printer
- Charge printer battery using supplied charger
- Check printer paper is inserted properly
- Check USB cable is plugged into printer
- Check USB cable is plugged into TTRU3 USB port
- Check printer is turned on by holding power button
- Try other USB ports

### OLTC moving in wrong direction

- Check the OLTC wiring diagram and ensure leads are connected to correct terminals.

### Cannot connect TTRU3 to PC



Contact your IT department for primary assistance when connecting any device to your PC.

- Check USB cable is fully inserted into the TTRU3
- Check USB cable is fully inserted into PC
- Check the TTRU3 is powered on
- Check TTRU3 SW is installed
- Check TTRU3 is running
- Move USB cable to another USB port on your PC
- Try another USB Cable
- Try another PC

### 6.2 Maintenance

Maintenance should be performed only by qualified persons familiar with the hazards involved with high-voltage test equipment. Read and understand Sections 1, 2, 3, 4, and 5 before performing any service.

The TTRU3 requires only periodic inspection. Inspect all hardware items to ensure all are in good condition.

The TTRU3 may be cleaned periodically. In so doing, do not allow water to penetrate panel holes. An all-purpose, household spray cleaner can be used to clean the panel. Polish with a soft, dry cloth. Clean the cables and mating panel receptacles with isopropyl or denatured alcohol applied with a clean cloth.

### 6.3 Calibration

A complete performance and calibration check should be made at least once every year. This will ensure that the TTRU3 is functioning properly over the entire measurement range. The TTRU3 calibration is performed on each new or repaired unit before sending it to a customer.

### 6.4 Repairs

Any service or repair of this equipment should be performed only by qualified persons who are aware of electrical hazards and the necessary precautions required to prevent injury.

Megger offers a complete Repair and Calibration Service and recommends that its customers take advantage of this service for routine maintenance or in the event of any equipment malfunction.

In the event Service is required, contact your Megger representative for a product Return Authorization (RA) number and shipping instructions.

Ship the product prepaid and insured and marked for the attention of the Megger Repair Department. Please indicate all pertinent information, including catalog number, serial number, and problem symptoms.



## Your "One Stop" source for all your electrical test equipment needs

- Battery Test Equipment
- Cable Fault Locating Equipment
- Circuit Breaker Test Equipment
- Data Communications Test Equipment
- Fiber Optic Test Equipment
- Ground Resistance Test Equipment
- Insulation Power Factor (C&DF) Test Equipment
- Insulation Resistance Test Equipment
- Line Testing Equipment
- Low Resistance Ohmmeters
- Motor & Phase Rotation Test Equipment
- Multimeters
- Oil Test Equipment
- Portable Appliance & Tool Testers
- Power Quality Instruments
- Recloser Test Equipment
- Relay Test Equipment
- T1 Network Test Equipment
- Tachometers & Speed Measuring Instruments
- TDR Test Equipment
- Transformer Test Equipment
- Transmission Impairment Test Equipment
- Watthour Meter Test Equipment
- STATES® Terminal Blocks & Test Switches
- Professional Hands-On Technical and Safety Training Programs

Megger is a leading global manufacturer and supplier of test and measurement instruments used within the electric power, building wiring and telecommunication industries.

With research, engineering and manufacturing facilities in the USA, UK, Germany and Sweden, combined with sales and technical support in most countries, Megger is uniquely placed to meet the needs of its customers worldwide.

Megger is certified according to ISO 9001 and 14001. Megger is a registered trademark.

- |                      |                        |
|----------------------|------------------------|
| ■ AUSTRALIA          | ■ POLAND               |
| ■ BULGARIA           | ■ ROMANIA              |
| ■ CANADA             | ■ RUSSIA               |
| ■ CZECH REPUBLIC     | ■ SINGAPORE            |
| ■ CHINA              | ■ SLOVAK REPUBLIC      |
| ■ FRANCE             | ■ SOUTH AFRICA         |
| ■ GERMANY            | ■ SPAIN                |
| ■ HUNGARY            | ■ SWEDEN               |
| ■ INDIA              | ■ SWITZERLAND          |
| ■ INDONESIA          | ■ TAIWAN               |
| ■ KINGDOM OF BAHRAIN | ■ THAILAND             |
| ■ KOREA              | ■ UNITED ARAB EMIRATES |
| ■ MALAYSIA           | ■ USA                  |
| ■ PAKISTAN           | ■ VIETNAM              |
| ■ PHILIPPINES        |                        |

### Address:

Megger Valley Forge  
2621 Van Buren Ave  
Norristown, PA 19403 USA

T +1 610 676 8500      sales@megger.com  
F +1 610 676 8610      www.megger.com



Megger is a registered trademark  
July 2, 2020 9:33 am